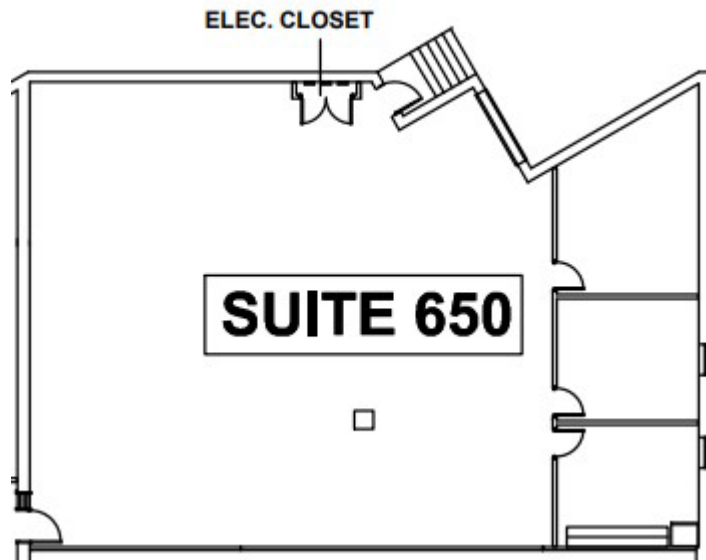


SUITE 650 | 3,266 SF

4951 Indiana Ave | Lisle, IL



SPACE NOTES

- 2 Private Offices
- Kitchen Area
- Open Space for Workstations or convert to Warehouse
- Access to Private Dock



John Millner, CCIM
630.480.6342
JMillner@VersaRES.com

Ryan Moen, SIOR
630.480.6346
RMoen@VersaRES.com

1 MID AMERICA PLAZA, 3RD FLOOR
OAKBROOK TERRACE, IL 60181
630.480.6413

EXCLUSIVELY LISTED BY

VERSA
REAL ESTATE SERVICES