

2nd Floor Rendering



FOR LEASE

525-527 Commercial St

Full Building Office or Retail/Restaurant
Brick & Timber Building + Outdoor Seating
Across from Transamerica Redwood Park





1st Floor Rendering



2nd Floor Rendering



One-of-a-Kind Outdoor Seating Opportunity

Space Info

525 Commercial Street

Size: 5,035 RSF +/-

Available: NOW

Term: 5-10 Years

Asking Rate: Call Listing Broker

Comments: Restaurant infrastructure in-place or possible Office conversion opportunity. Indoor + outdoor seating. Office, Restaurant, Event Venue, Retail and hospitality uses considered. Type-1 hood in-place.

Highlights

Full Building opportunity

Excellent Branding and Signage

Brick & Timber Building

Historic Commercial Street with

Bars, Restaurants and More

Local Property Management

4 Stories + Lower Level + Outdoor Seating

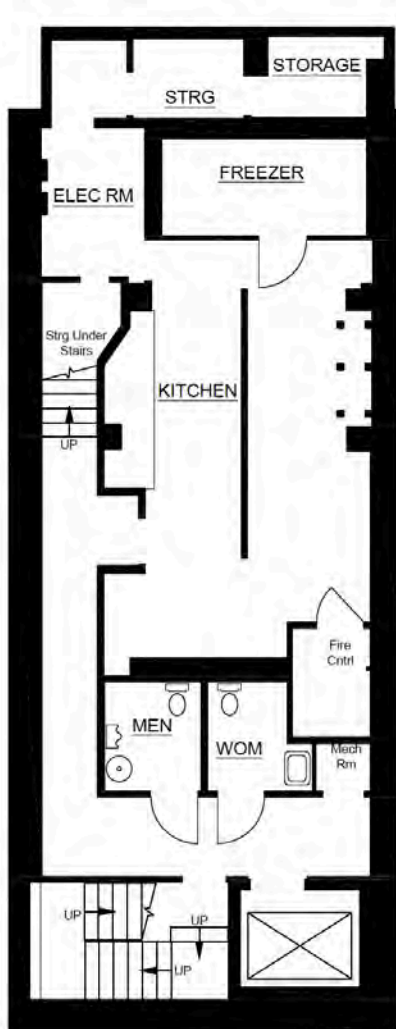
Central Financial District Location

½ Block from Transamerica

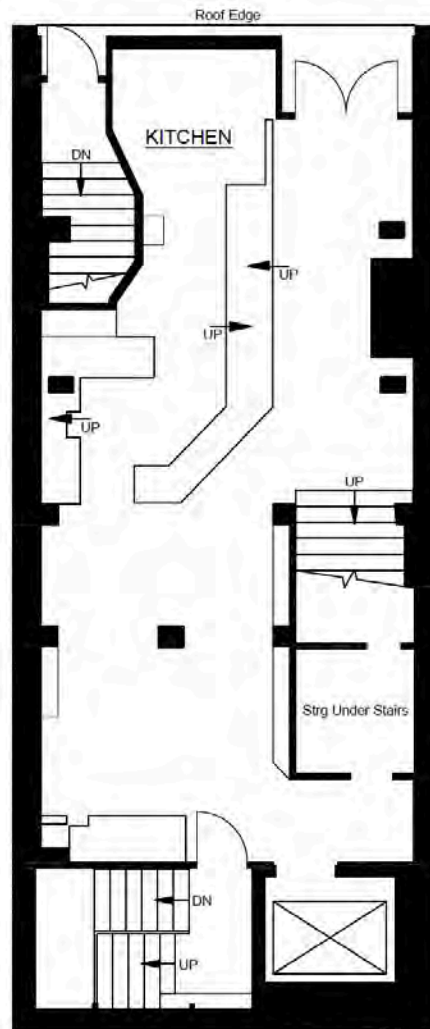
Zoning: C-3-O

These square footage numbers are estimates, seller and broker do not represent accuracy or inaccuracy of these figures.

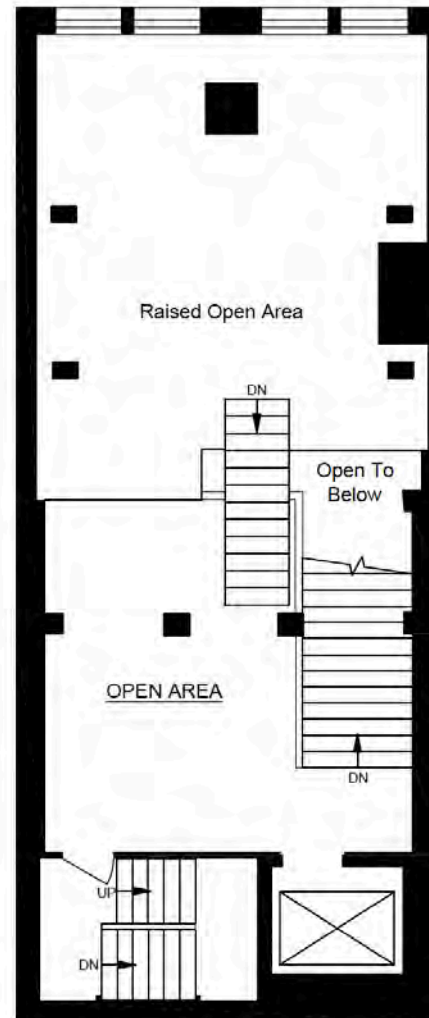
5,035 RSF +/-



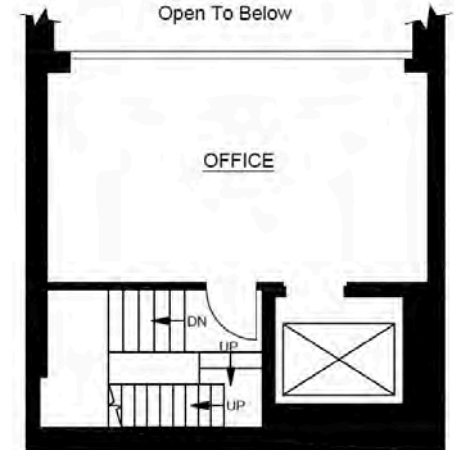
LOWER LEVEL



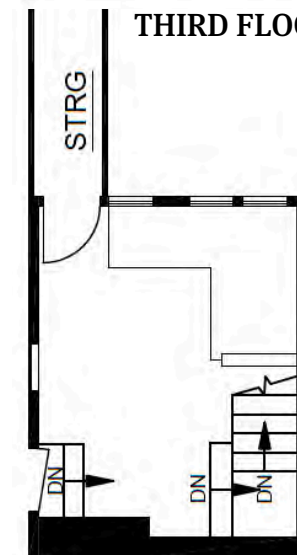
FIRST FLOOR



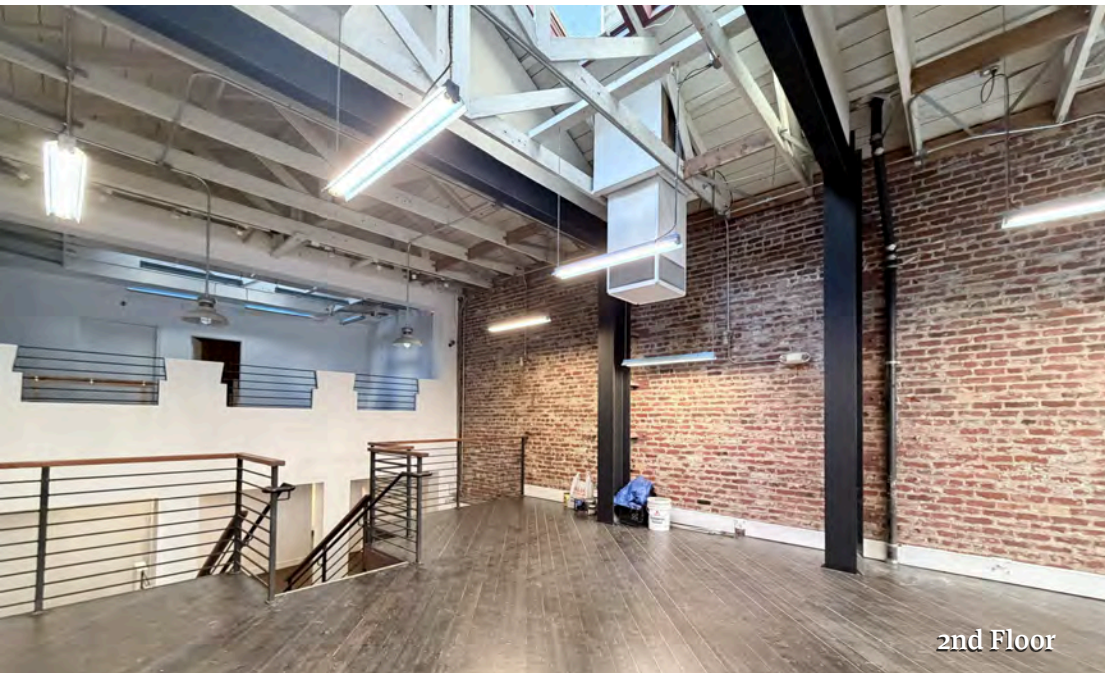
SECOND FLOOR



THIRD FLOOR



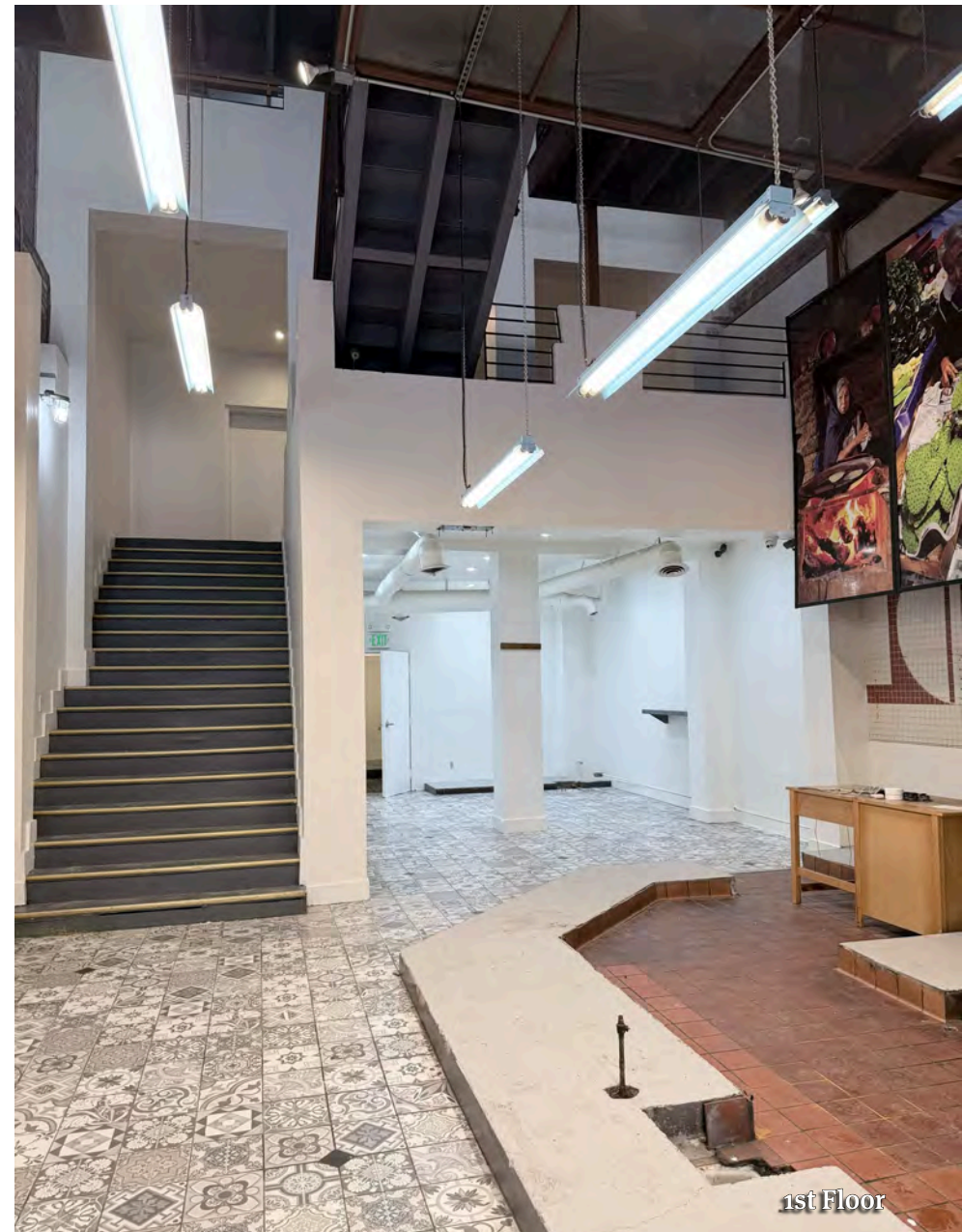
FOURTH FLOOR



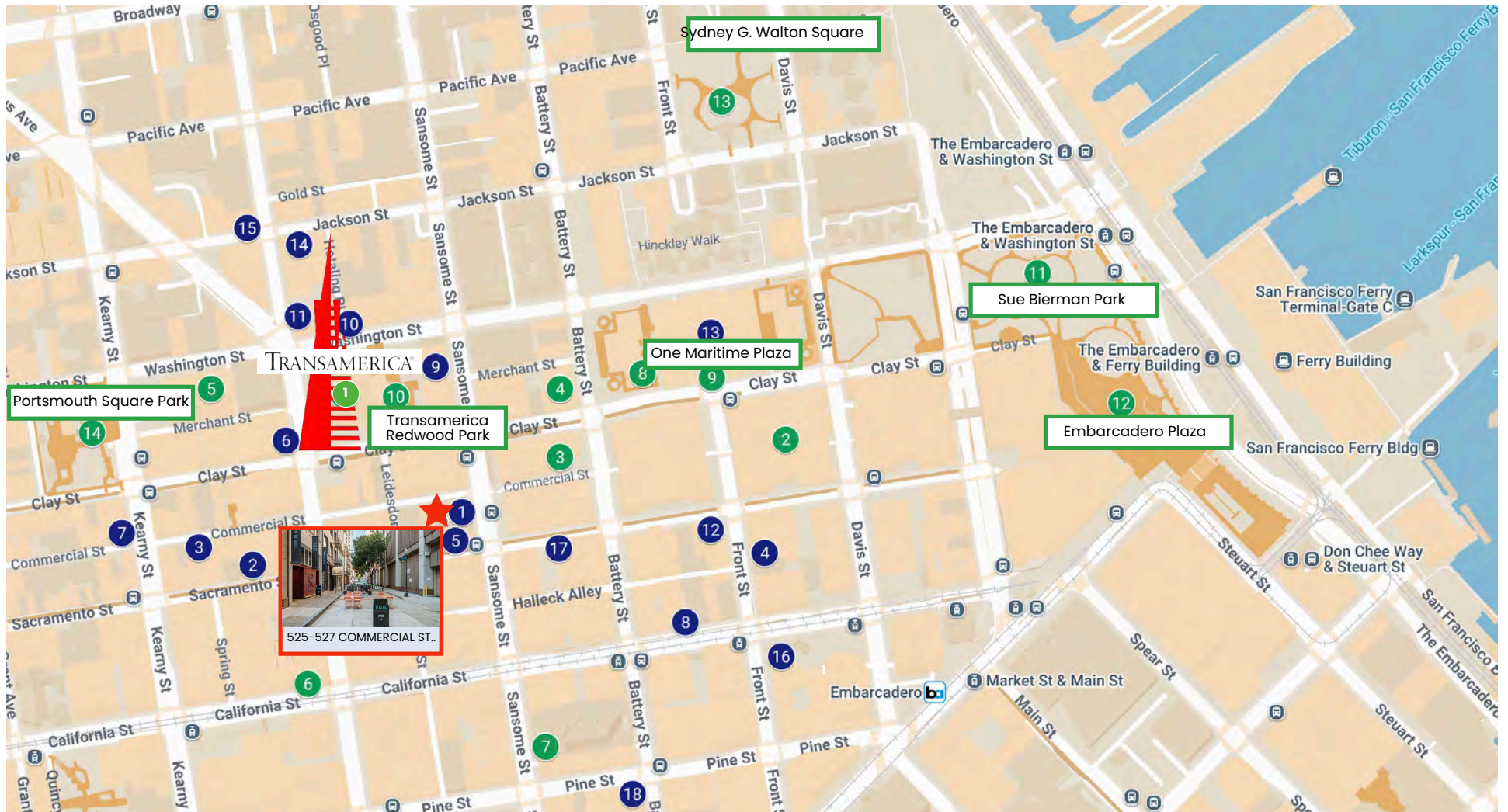
2nd Floor



One-of-a-Kind Outdoor Seating Opportunity



1st Floor



RESTAURANTS

- | | |
|-------------------|--------------------|
| 1 The Barrel Room | 10 Verjus |
| 2 Palio | 11 Maison Nico |
| 3 Sisterita | 12 Royal Exchange |
| 4 Schroeder's | 13 Bar Sprezzatura |
| 5 Irish Times | 14 Postscript |
| 6 Viva Cafe | 15 Roka Akor |
| 7 R & G Lounge | 16 PABU Izakaya |
| 8 Tadich Grill | 17 Il Canto Cafe |
| 9 Cafe Sebastian | 18 Wayfare Tavern |

NEARBY BUSINESSES, HOTELS & PARKS

- | | |
|------------------------------------|------------------------------|
| 1 Transamerica Pyramid | 10 Transamerica Redwood Park |
| 2 Embarcadero Center | 11 Sue Bierman Park |
| 3 The Jay, Autograph Collection | 12 Embarcadero Plaza |
| 4 Club Quarters Hotel | 13 Sydney G. Walton Square |
| 5 Hilton San Francisco | 14 Portsmouth Square Park |
| 6 Omni San Francisco Hotel | |
| 7 Four Seasons Hotel San Francisco | |
| 8 Punch Line | |
| 9 One Maritime Plaza | |

FOR LEASE

525-527 Commercial St

FOR MORE INFORMATION,
PLEASE CONTACT EXCLUSIVE BROKER:

JAY SHAFFER

(415) 407-3997

jshaffer@coltoncommercialsf.com

License #: 01444640



The foregoing is based upon information provided by others which we believe is accurate, however, no guarantee, warranty or representation is made. We recommend that all interested parties independently verify its accuracy and completeness. As well, any projections, assumptions, opinions, or estimates are used for example only and do not represent the current or future performance of the identified property. Your tax, financial, legal and toxic substance advisors should conduct a careful independent investigation of the property and its suitability for your needs, including land use limitations. The property is subject to prior lease, sale, change in price, or withdrawal from the market without notice.