

# PETER JEFFERSON MEDICAL CENTER.

590 Peter Jefferson Parkway, Charlottesville, VA

# Design Your Dream Medical Office\*



*\*Without draining your budget*

Looking for a tailored medical office without the high price tag? Get in touch with Transwestern's Healthcare Advisory Services Team to learn more about **tenant improvement packages at 590 Peter Jefferson Parkway.**

**590** PETER  
JEFFERSON  
PARKWAY.

For more information, **contact:**

**JOSEPH MCCORMICK**  
301.896.9072  
joe.mccormick@transwestern.com

**CHERI DOYLE**  
484.345.1373  
cheri.doyle@transwestern.com



# Available Space

Suite 350 | 2,000 - 5,885 SF



As-Built

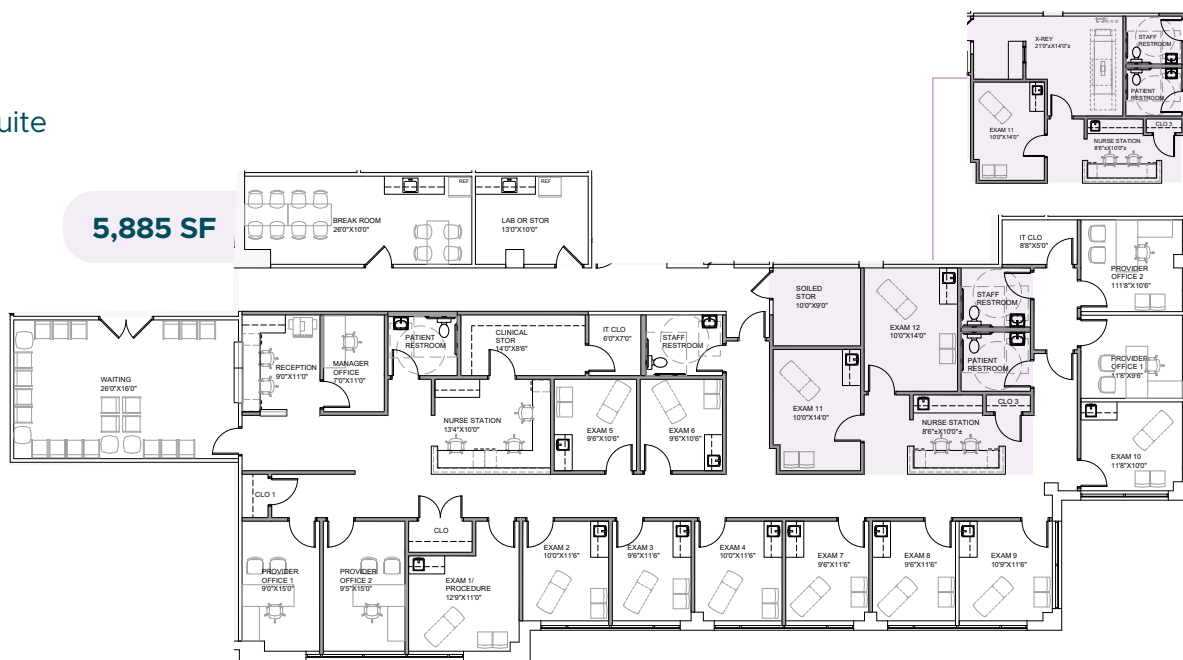


- Landlord will offer an aggressive TI package.
- Directly adjacent to Sentara Martha Jefferson Hospital and within the Peter Jefferson Place office park.
- Premier accessibility and visibility to both Interstate 64 and Route 250, two of the area's most prominent roadways.

## SPECULATIVE SUITE OPTIONS

Optional X-Ray Room

Single Suite



Two Suites

