

Office | For Lease

CBRE

Laidley Tower

Office Suites Available



500 Lee Street East
Charleston, WV 25301



Class A Office Space

Located in Charleston's CBD

Multiple tenancy high rise tower with banking facility on site.

Amenities include:

- High-speed internet access
- 24/7 onsite security & keycard entry system
- Micro market
- 549 space parking facility
- Five modernized high-speed elevators
- Elegant atrium lobby renovated in 2020
- Banking facility on site
- Chillers replaced in 2024
- \$1.5 M exterior building upgrades in process (2025)



Class A Office Suites Available

18

Stories of Class A Office Space

1984

Year Built

2020

Lobby & Market Renovated

2nd Floor

1,120 USF

5th Floor

12,317 USF

6th Floor

12,317 USF

9th Floor Suite 950

3,145 USF

10th Floor

12,317 RSF

11th Floor, Suite 1140

1,394 USF

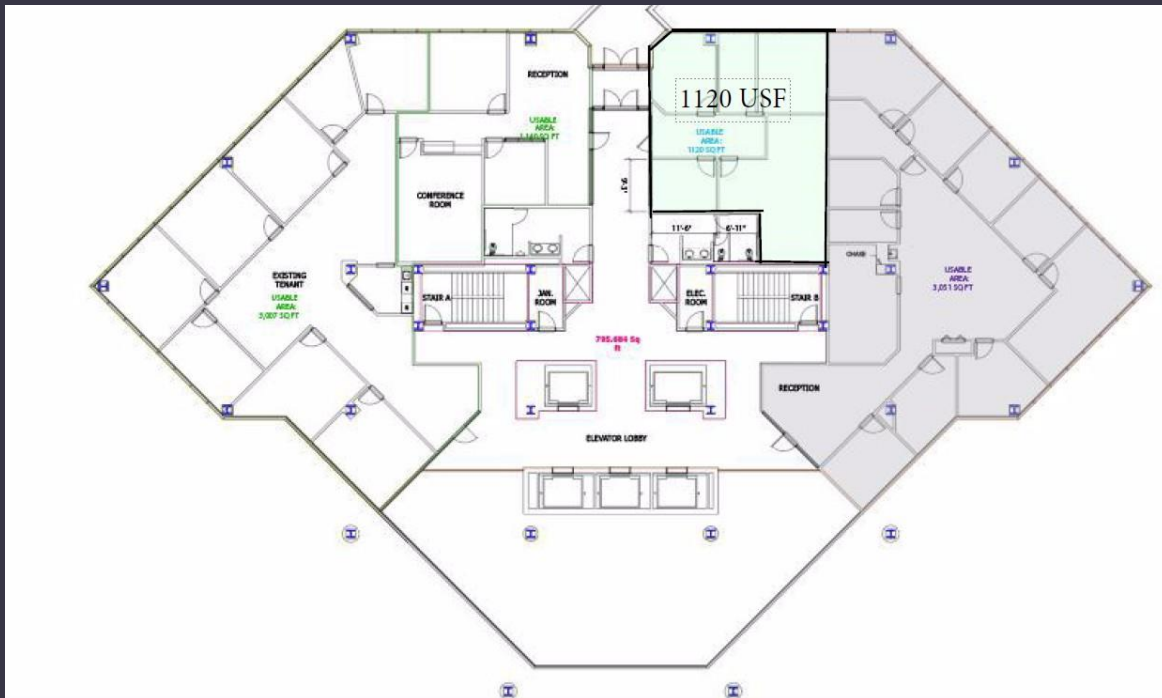


2024 Demographics	One Mile	Three Miles	Five Miles
Population	6,414	43,123	63,669
Households	3,227	19,582	29,260
Average Household Income	\$66,698	\$92,359	\$93,665
Businesses	1,775	3,075	4,205

Laidley Tower

Class A Suites Available

Available 2nd Floor
1,120 USF



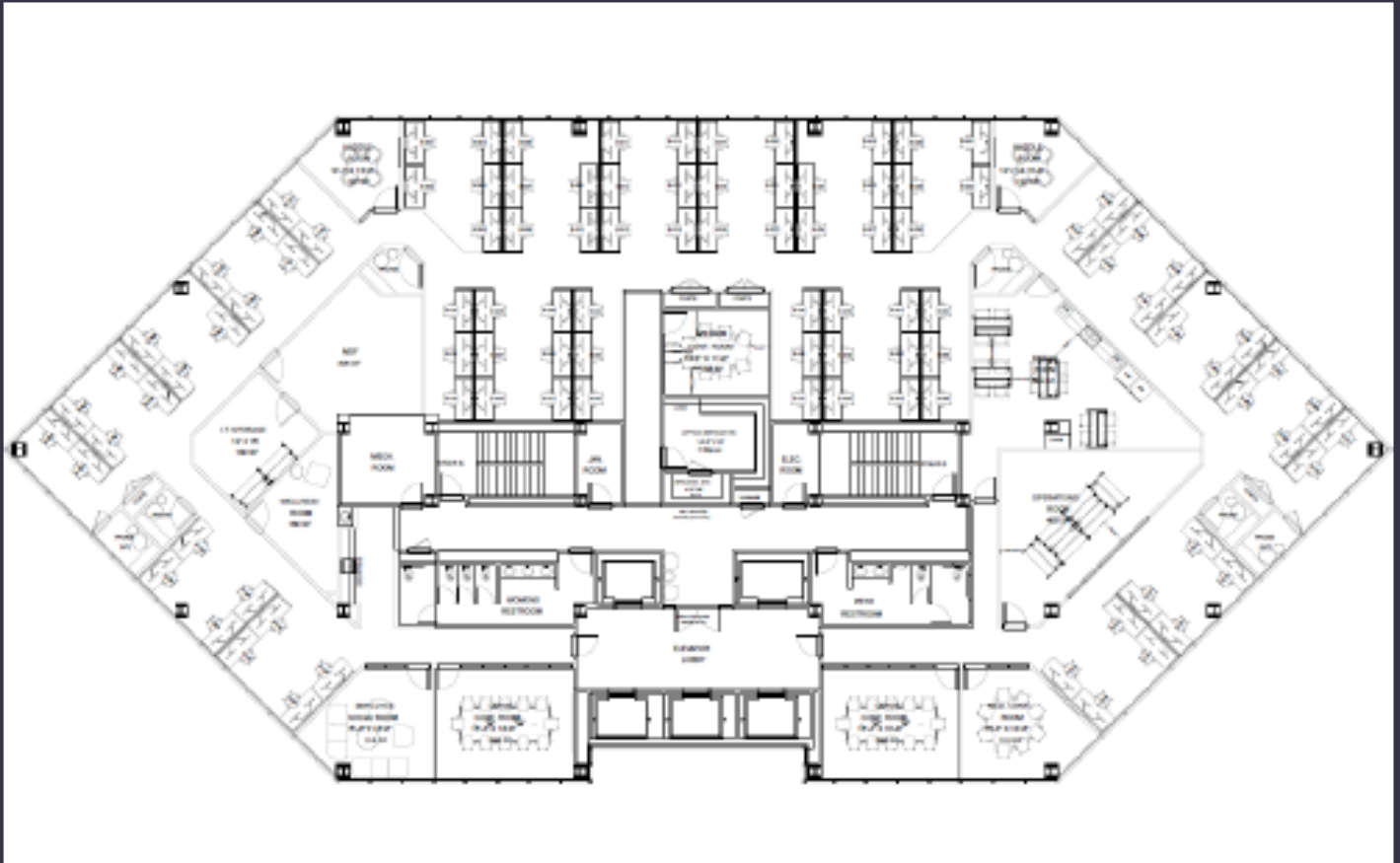
Available 5th Floor:
12,317 USF



Laidley Tower

Class A Suites Available

Available 6th Floor:
12,317 USF

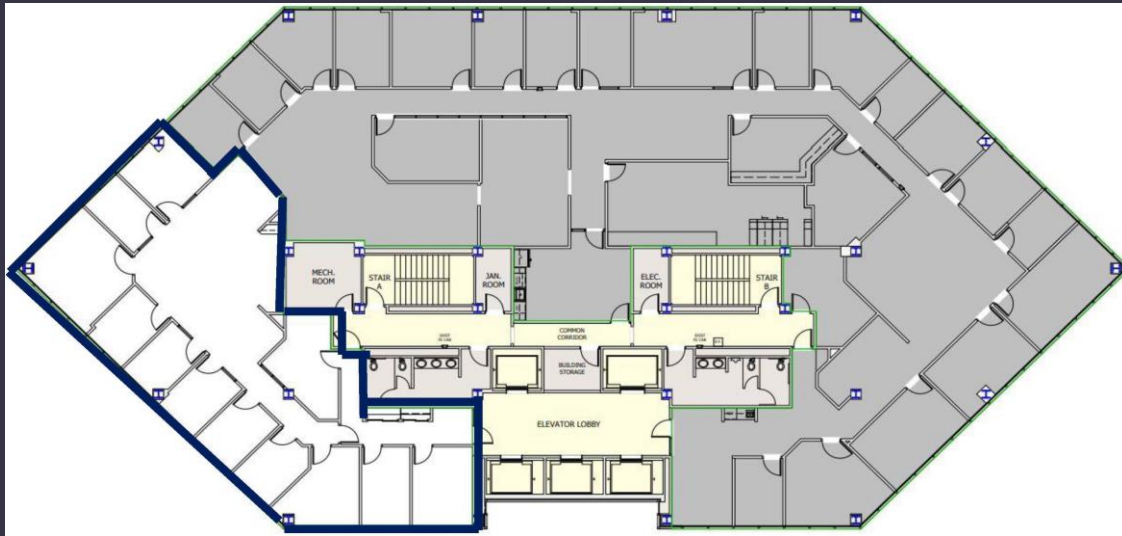


-----○
-----S

Laidley Tower

Class A Suites Available

Available 9th Floor:
Suite 950 3,145 USF



R E O
L I N E S O F T

10th Floor



Laidley Tower

Class A Suites Available



Laidley Tower

Class A Suites Available



DeWitt Blundon

Principal
Senior Vice President
Senior Vice President

Senior Vice President
Senior Vice President

David Durbin

Principal
Senior Vice President
Senior Vice President
Senior Vice President
Senior Vice President

© 2024 CBRE, Inc. All rights reserved. This information has been obtained from sources believed reliable but has not been verified for accuracy or completeness. You should conduct a careful, independent investigation of the property and verify all information. Any reliance on this information is solely at your own risk.