



Mt. Pleasant Commerce Center

13200–13207 Globe Drive
Mt. Pleasant, WI 53177



262.524.0100 | SJPI.COM/WISCONSIN



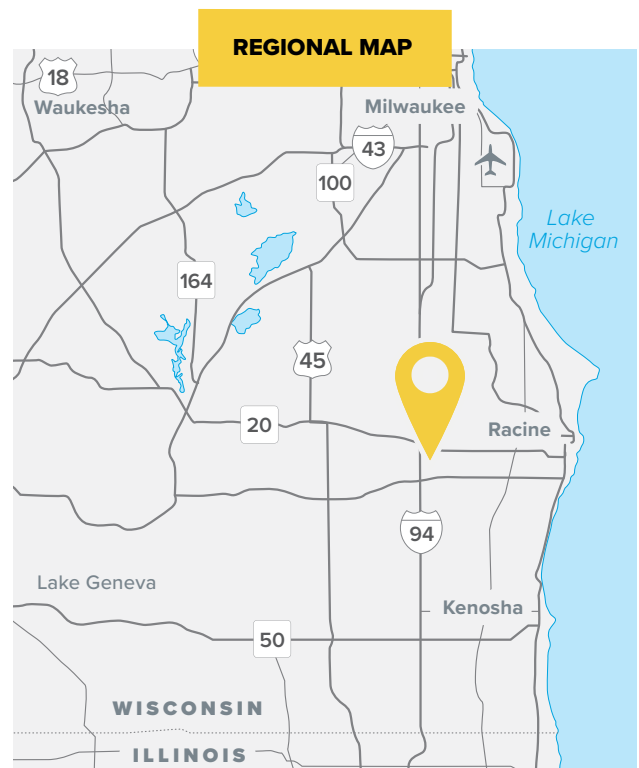
About Mt. Pleasant Commerce Center

Mt. Pleasant Commerce Center is an 18-acre mixed-use business community located near the intersection of WI 20 (Washington Avenue) and Interstate 94/41 in Mt. Pleasant, Wisconsin.

The business community is comprised of five buildings, totaling more than 211,100 square feet of office and flex/R&D space. Tenant sizes from 1,295 square feet to 54,329 square feet of space offer businesses straight-forward, economical and high-utility space.



Scan the QR code or visit sjpi.com/mtpleasantcommerce to learn more.



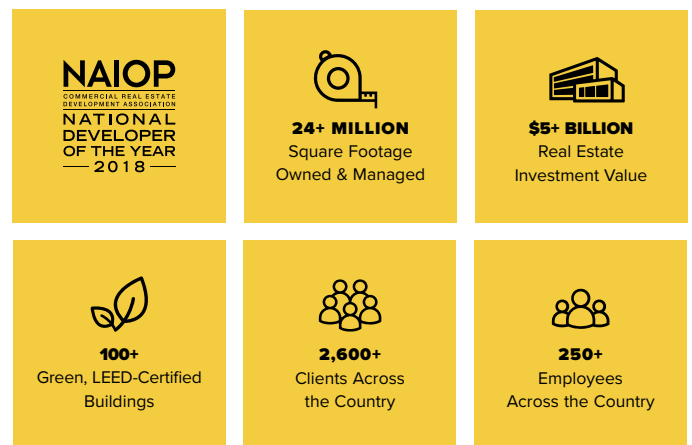


About St. John Properties

St. John Properties, Inc. is one of the nation's largest and most successful privately held commercial real estate firms. Founded in 1971 by Edward St. John and headquartered in Baltimore, Maryland, the company has developed and owns office, flex/research and development, warehouse, retail and residential space nationwide.

St. John Properties is a vertically-integrated real estate developer, and maintains an excellent credit history with no loan defaults. In 2018, the company was named The National Developer of the Year by NAIOP, the Commercial Real Estate Development Association.

Visit sjpi.com/about to learn more.



*“We don’t just believe in a **commitment to excellence**. We practice it every day.”*

Edward St. John, Founder & Chairman



Mt. Pleasant Commerce Center

SITE PLAN

Single-Story Office Buildings

13200 Globe Drive 200	46,545 SF
13200 Globe Drive 100	54,329 SF

Single-Story Specifications

Suite Sizes	Up to 54,329 SF
Ceiling Height	12 ft. clear minimum
Parking	4.5 spaces per 1,000 SF
Heat	Natural Gas
Roof	EPDM rubber
Construction	Masonry
Zoning	C-3

Flex/R&D Buildings

13203 Globe Drive	39,080 SF
13205 Globe Drive	39,080 SF
13207 Globe Drive	32,156 SF

Flex/R&D Specifications

Suite Sizes	Up to 39,080 SF
Ceiling Height	16 ft. clear minimum
Parking	2.3 spaces per 1,000 SF
Heat	Natural Gas
Roof	EPDM rubber
Construction	Masonry
Loading	Dock or drive-in
Zoning	C-4



Scan with your mobile device to take a virtual tour, download floor plans and more!



Single-Story Office

Direct-Entry Office

Mt. Pleasant Commerce Center includes two single-story office buildings offering direct-entry space. These buildings feature 12 foot ceiling heights and build-to-suit suites. Free, on-site parking is available adjacent to the buildings.



Office/Retail Space

13200 Globe Drive 200	46,545 SF
13200 Globe Drive 100	54,329 SF

Single-Story Office Specifications

Suite Sizes	Up to 54,329 SF
Ceiling Height	12 ft. clear minimum
Parking	4.5 spaces per 1,000 SF
Heat	Natural Gas
Roof	EPDM rubber
Construction	Masonry
Zoning	C-3





Flex/R&D

Direct-Entry Flexible Space

Mt. Pleasant Commerce Center consists of three new direct-entry flex/R&D buildings. These buildings feature 16 foot ceiling heights with dock and drive-in loading capabilities. Spacious loading areas at the rear of the buildings offer easy access for loading.



Flex/R&D Space

13203 Globe Drive	39,080 SF
13205 Globe Drive	39,080 SF
13207 Globe Drive	32,156 SF

Flex/R&D Specifications

Suite Sizes	Up to 39,080 SF
Ceiling Height	16 ft. clear minimum
Parking	2.3 spaces per 1,000 SF
Heat	Natural Gas
Roof	EPDM rubber
Construction	Masonry
Loading	Dock or drive-in
Zoning	C-4



Distances to:

- Chicago, IL 69 miles
- I-94 1 mile
- Milwaukee, WI 24 miles
- Midway International Airport 78 miles
- Milwaukee Mitchell International Airport 24 miles
- O'Hare International Ariport 56 miles

Contact Us

For additional information or to schedule a tour, contact:

Greg Fax
 Regional Partner, Wisconsin
 gfax@sjpi.com | 262.524.0100

Wisconsin Regional Office:
 2000 Pewaukee Road | Suite A | Waukesha, WI 53188

262.524.0100 | SJPI.COM/WISCONSIN

About St. John Properties

St. John Properties, Inc. is one of the nation's largest and most successful privately held commercial real estate firms. Founded in 1971, the vertically-integrated company develops, owns and manages office, flex/research and development, warehouse, retail and residential space.

St. John Properties Wisconsin owns and is developing more than 1.7 million square feet of commercial space across 16 business communities in Wisconsin.

Connect with us **@stjohnprop**



This information contained in this publication has been obtained from sources believed to be reliable. St. John Properties makes no guarantee, warranty or representation about this information. Any projections, opinions, assumptions or estimates used here are for example only and do not represent the current or future performance of the property. Interested parties should conduct an independent investigation to determine whether the property suits their needs. REV 09/24