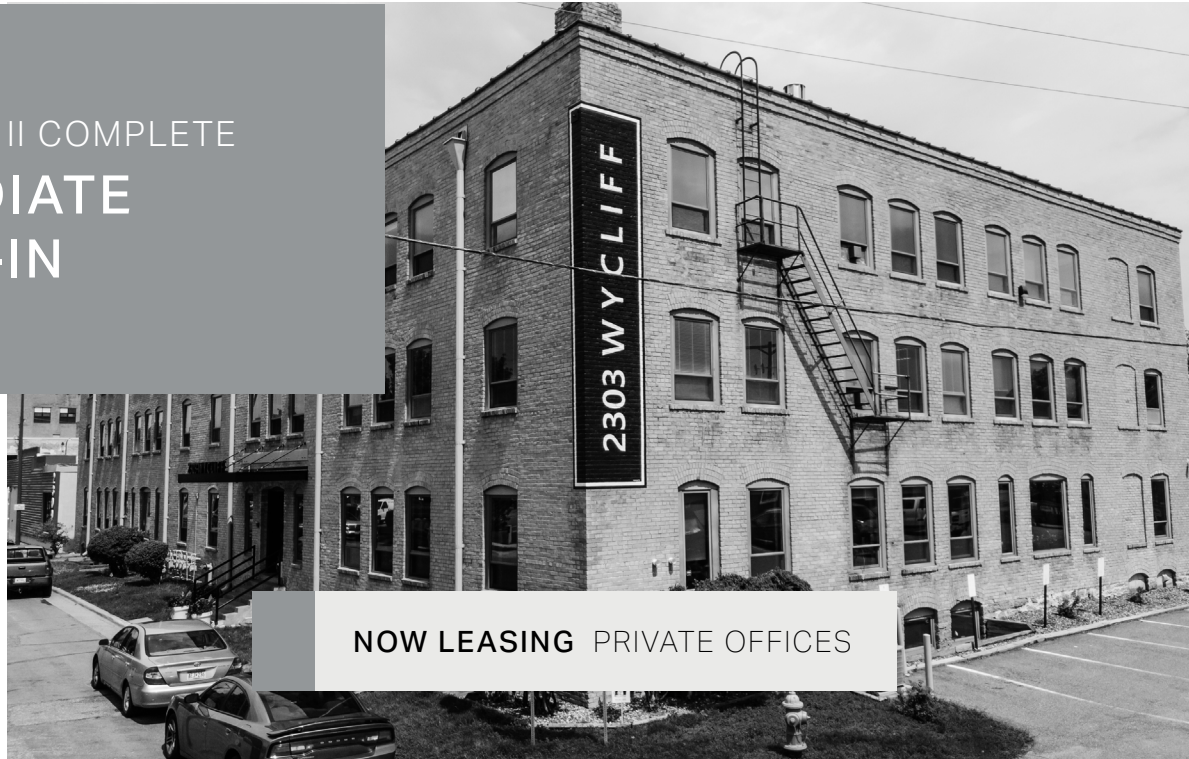


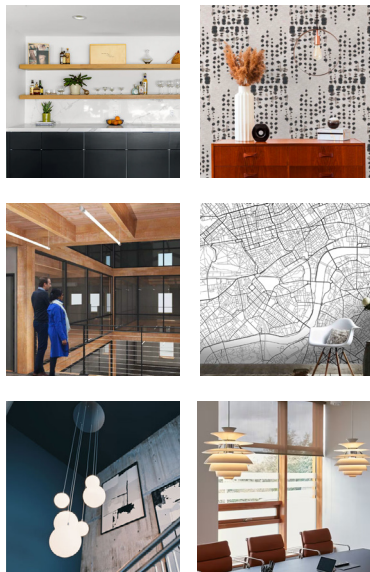
PHASE I & II COMPLETE
**IMMEDIATE
MOVE-IN**

STARTING AT
\$755
PER MONTH



NOW LEASING PRIVATE OFFICES

FINISHES



**not an exact representation of the finishes and space. Finishes representative of design and feel.*

Tour the building!

[WATCH VIDEO](#)

ABOUT

Step into a realm where history meets the modern workplace. This 1900s, brick and timber building, has been renovated with modern finishes all while maintaining the beautiful character of the building.

The Wycliff Collective is a collection of private offices, with access to state-of-the-art amenities. Located right off of University Avenue in St. Paul. This workspace offers easy accessibility and an array of breweries, coffee shops, and lunch options in the area.

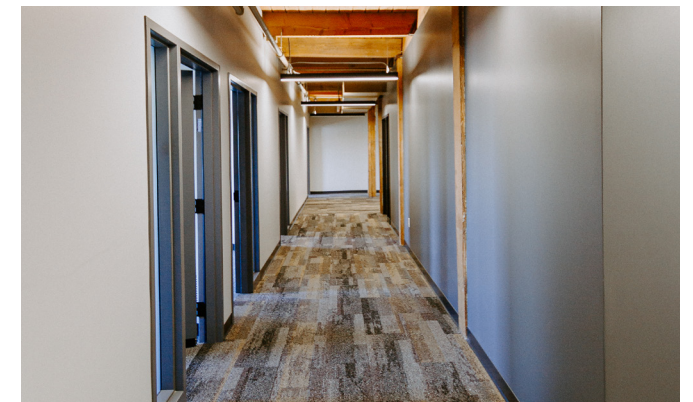
-  **SHARED INTERNET**
-  **MAILDROP**
-  **BREAKROOM**
-  **CONFERENCE & GROUP ROOM**

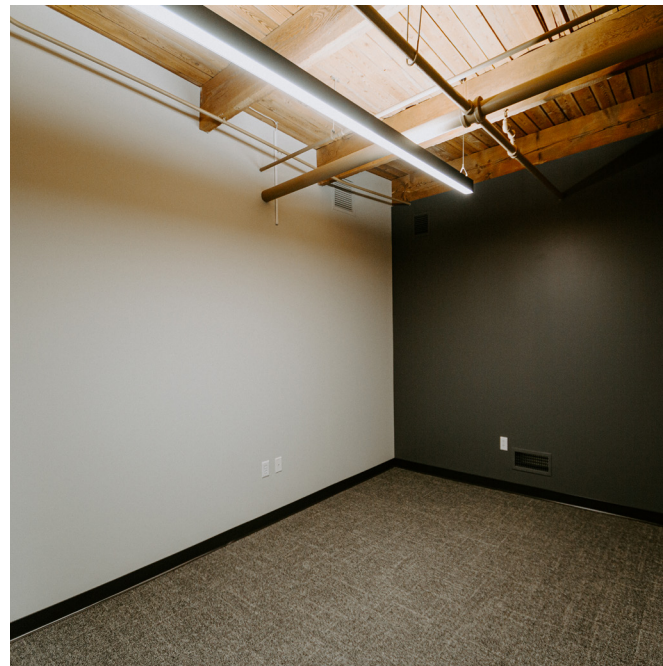


Gerry Norton

The Brookshire Company
(952) 960-4745
gerry@brookshireco.com

**Broker has a principal interest in building*





WYCLIFF COLLECTIVE FLOOR PLAN



WEST SIDE

WYCLIFF COLLECTIVE: FLOOR 3

EAST SIDE

■ Pending Signature
 ■ Available

AVAILABILITY & PRICING

PHASE I - AVAILABLE NOW

Suite 364	\$755/month
Suite 374	\$1,495/month
Suite 376	\$1,359/month

GROSS LEASE RATE
+ TECHNOLOGY FEE \$35/MONTH

GET IN TOUCH

CONTACT US TO LEARN
MORE & SCHEDULE A TOUR.

