



Office / Warehouse Space for Lease

520 N 8TH STREET
LAKE CITY, MN 55041

Building Size

336,223 SF Total

Available Space

Building 1:

53,956 SF

Building 2:

59,700 SF

Total:

113,656 SF

Lease Rates:

\$8.00 PSF- Office

\$4.00 PSF- Warehouse

Property Highlights

- 16' clear height
- Four (4) Dock Doors
- One (1) Drive-in Door
- Ability to add more docks or drive-ins
- Partial A/C available
- On-site Ownership and Management
- Warehouse divisible
- 12,595 SF of Office available that is divisible

For information, please contact:

Brian Netz

Executive Managing Director

t 612-430-9947

brian.netz@nrmk.com

Lucas Long

Director

t 612-430-9952

lucas.long@nrmk.com

100 South Fifth Street, Suite 2100
Minneapolis, MN 55402

NEWMARK

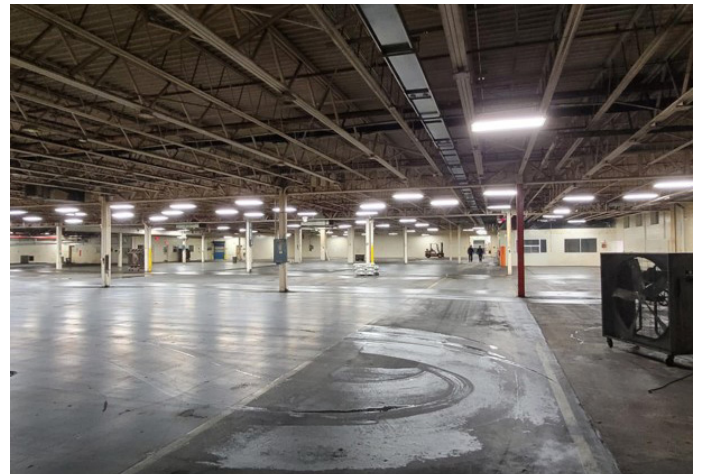
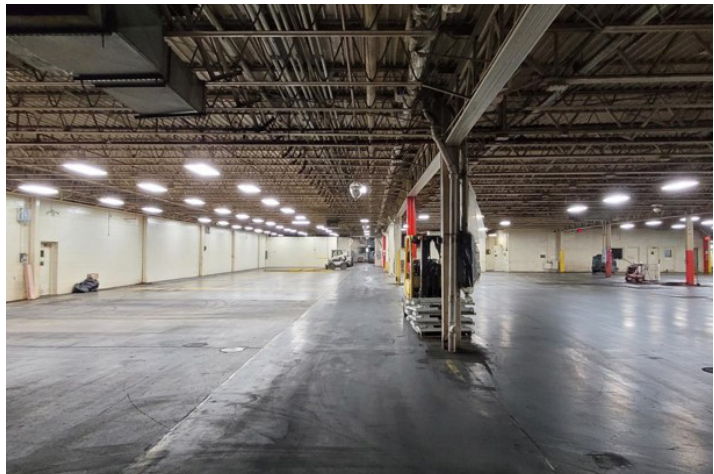
nrmk.com

The information contained herein has been obtained from sources deemed reliable but has not been verified and no guarantee, warranty or representation, either express or implied, is made with respect to such information. Terms of sale or lease and availability are subject to change or withdrawal without notice.

520 N 8TH STREET | LAKE CITY, MN 55041



Building 2 Photos



CONTACT

Brian Netz

Executive Managing Director

t 612-430-9947

brian.netz@nrmk.com

nrmk.com

Lucas Long

Director

t 612-430-9952

lucas.long@nrmk.com

NEWMARK

520 N 8TH STREET | LAKE CITY, MN 55041

Building 1 Photos



CONTACT

Brian Netz

Executive Managing Director

t 612-430-9947

brian.netz@nmrk.com

nmrk.com

Lucas Long

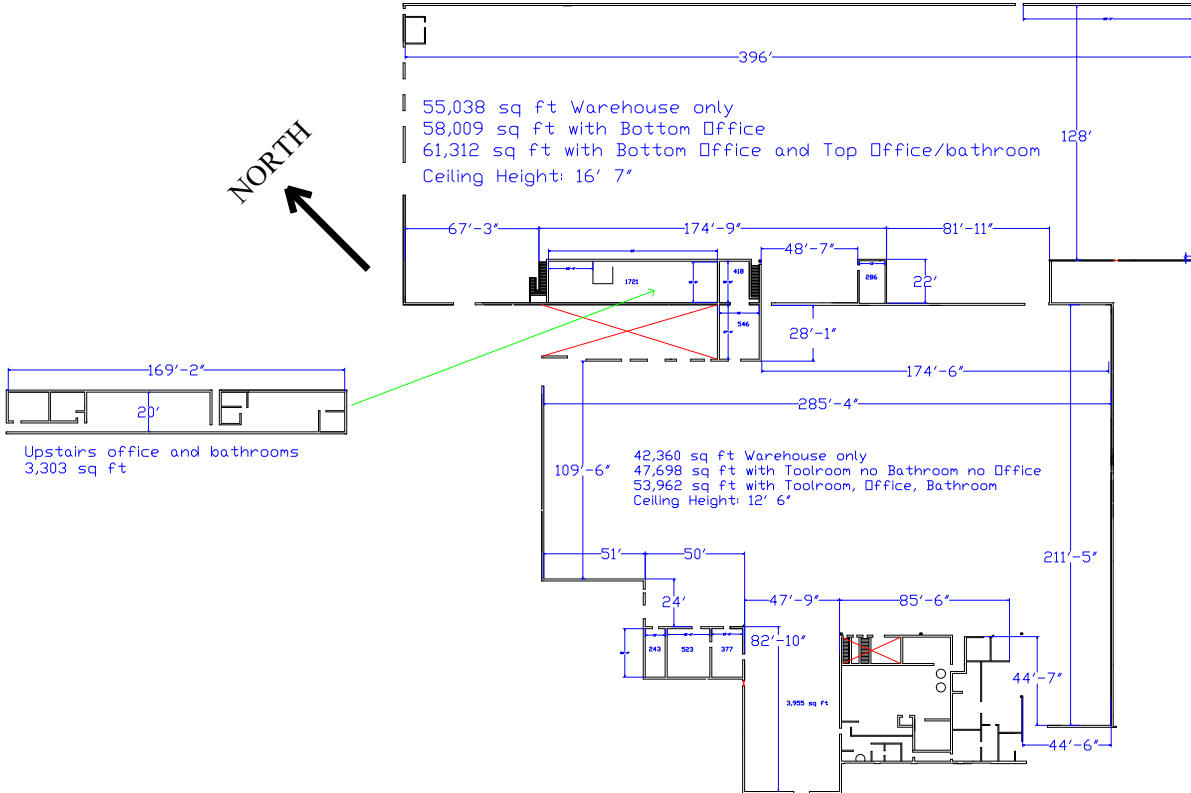
Director

t 612-430-9952

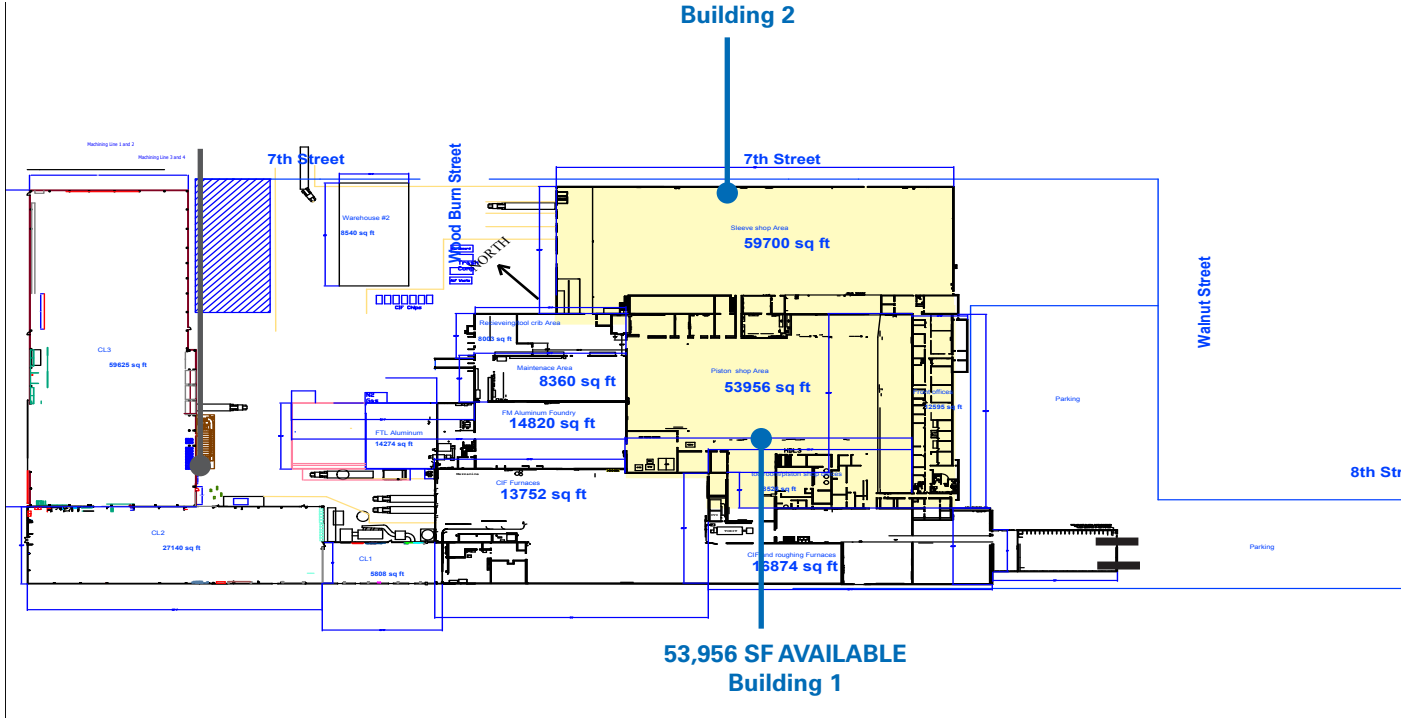
lucas.long@nmrk.com

NEWMARK

Floor Plans



59,700 SF AVAILABLE
Building 2



53,956 SF AVAILABLE
Building 1

Brian Netz
 Executive Managing Director
 t 612-430-9947
 brian.netz@nmrk.com
 nmrk.com

Lucas Long
 Director
 t 612-430-9952
 lucas.long@nmrk.com