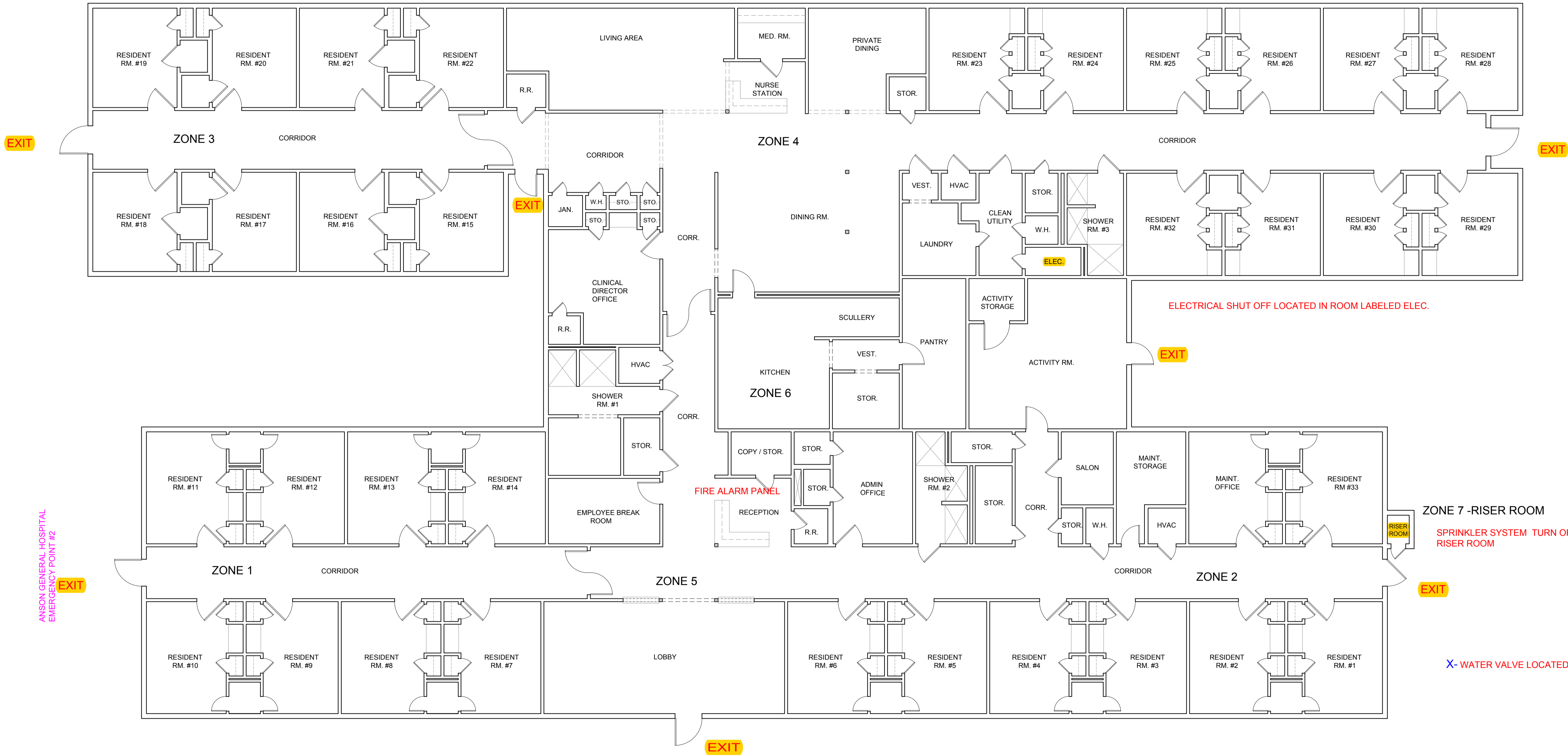


X--GAS METER TURN OFF VALVE



ANSON GENERAL HOSPITAL EMERGENCY POINT #2

FIRE ALARM PANEL

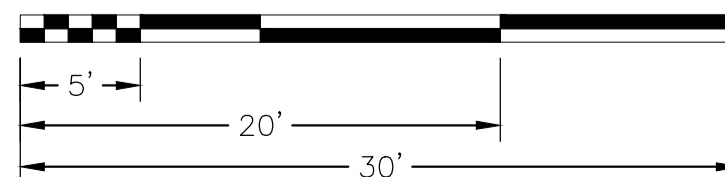
ELECTRICAL SHUT OFF LOCATED IN ROOM LABELED ELEC.

ZONE 7 - RISER ROOM
SPRINKLER SYSTEM TURN OFF VALVE LOCATED RISER ROOM

X- WATER VALVE LOCATED UNDER BLUE COVER

FLOOR PLAN

SCALE: 1/8" = 1'-0"



ANSON SENIOR LIVING EVACUATION MAP

EMERGENCY ACCESS POINT TO MEET- BETHEL CHURCH FENCE