



MEDICAL DEVELOPMENT OPPORTUNITY

PROPERTY OVERVIEW

PRICE | \$1,000,000.00

PARCEL ID | 00024963

ACREAGE | 0.79 +/- ACRES

ZONING | OP - OFFICE & PROFESSIONAL

Prime development opportunity in the highly desirable medical campus area of Pinehurst. Lot 2 of Iverness Office Park consists of approximately +/- 0.79 acres zoned OP (Office & Professional), ideally suited for medical, professional, or office development. Positioned within walking distance of FirstHealth Moore Regional Hospital and Reid Heart Center, the property offers exceptional proximity to one of the region's premier healthcare areas. The site features

approximately 130 feet of frontage on Aviemore Drive, extends to U.S. Route 15-501 at the rear, and has water and sewer available along Aviemore Drive.

GEORGE MANLEY
NC BROKER
C: 910.603.8395
GEORGE@CSGNC.COM

CAROLINA SUMMIT GROUP
390 SW Broad Street, Suite B
Southern Pines, NC 28387
910.684.5353
carolinasummitgroup.com

HOLLY BELL
NC BROKER
C: 910.690.1065
HOLLY@CSGNC.COM

AREA MAP

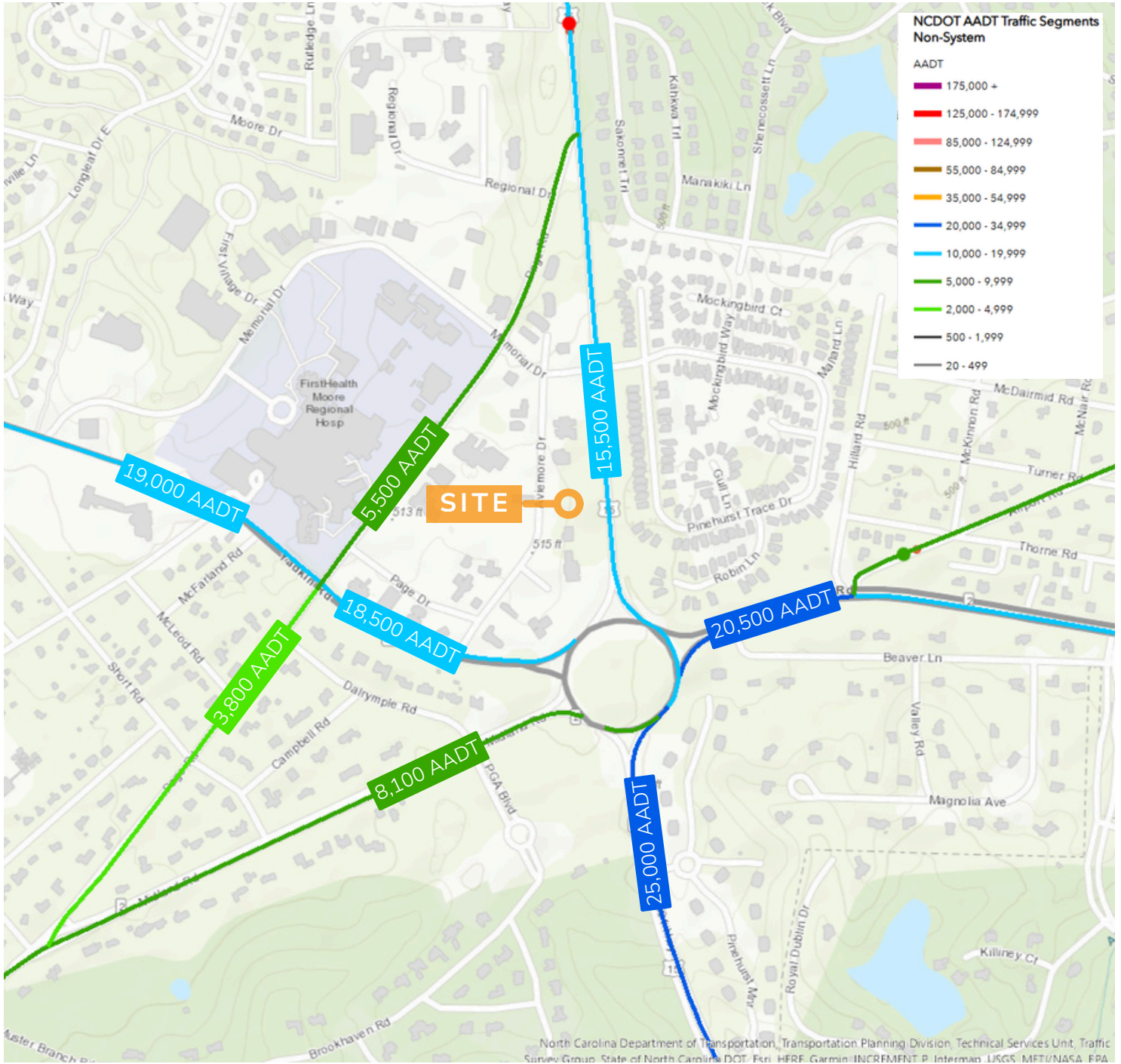


GEORGE MANLEY
NC BROKER
C: 910.603.8395
GEORGE@CSGNC.COM

CAROLINA SUMMIT GROUP
390 SW Broad Street, Suite B
Southern Pines, NC 28387
910.684.5353
carolinasummitgroup.com

HOLLY BELL
NC BROKER
C: 910.690.1065
HOLLY@CSGNC.COM

TRAFFIC MAP

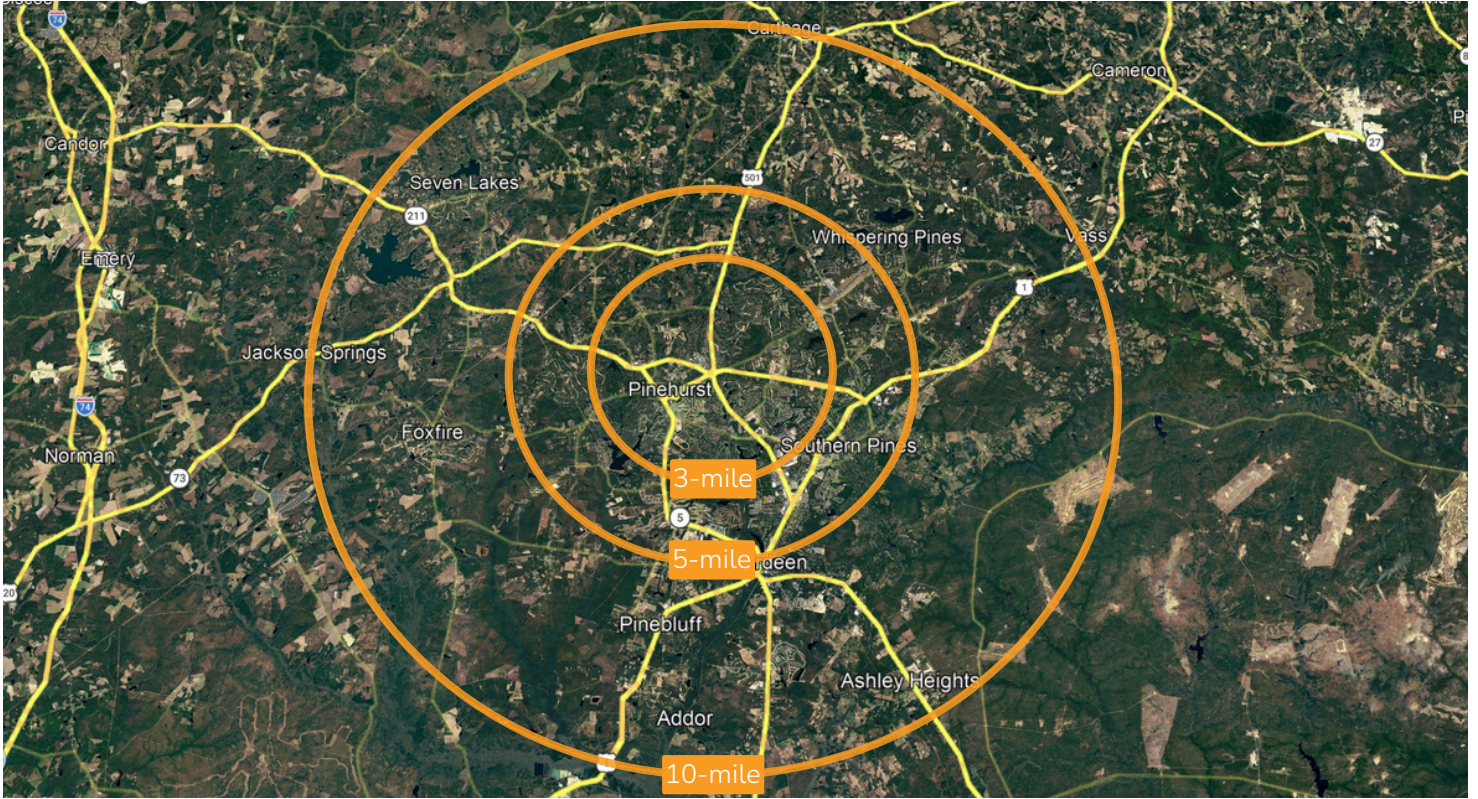


GEORGE MANLEY
 NC BROKER
 C: 910.603.8395
 GEORGE@CSGNC.COM

CAROLINA SUMMIT GROUP
 390 SW Broad Street, Suite B
 Southern Pines, NC 28387
 910.684.5353
 carolinasummitgroup.com

HOLLY BELL
 NC BROKER
 C: 910.690.1065
 HOLLY@CSGNC.COM

DEMOGRAPHICS




3 MILE RADIUS

 **23,501**
2025 ESTIMATED POPULATION

 **31,742**
TOTAL DAYTIME POPULATION

 **53.9 YEARS**
MEDIAN AGE

 **\$486,478**
MEDIAN HOME VALUE

 **\$103,517**
MEDIAN HOUSEHOLD INCOME


5 MILE RADIUS

 **48,902**
2025 ESTIMATED POPULATION


 **59,177**
TOTAL DAYTIME POPULATION

 **48.2 YEARS**
MEDIAN AGE

 **\$456,156**
MEDIAN HOME VALUE

 **\$88,751**
MEDIAN HOUSEHOLD INCOME


10 MILE RADIUS

 **84,273**
2025 ESTIMATED POPULATION

 **86,806**
TOTAL DAYTIME POPULATION

 **45.2**
MEDIAN AGE

 **\$426,400**
MEDIAN HOME VALUE

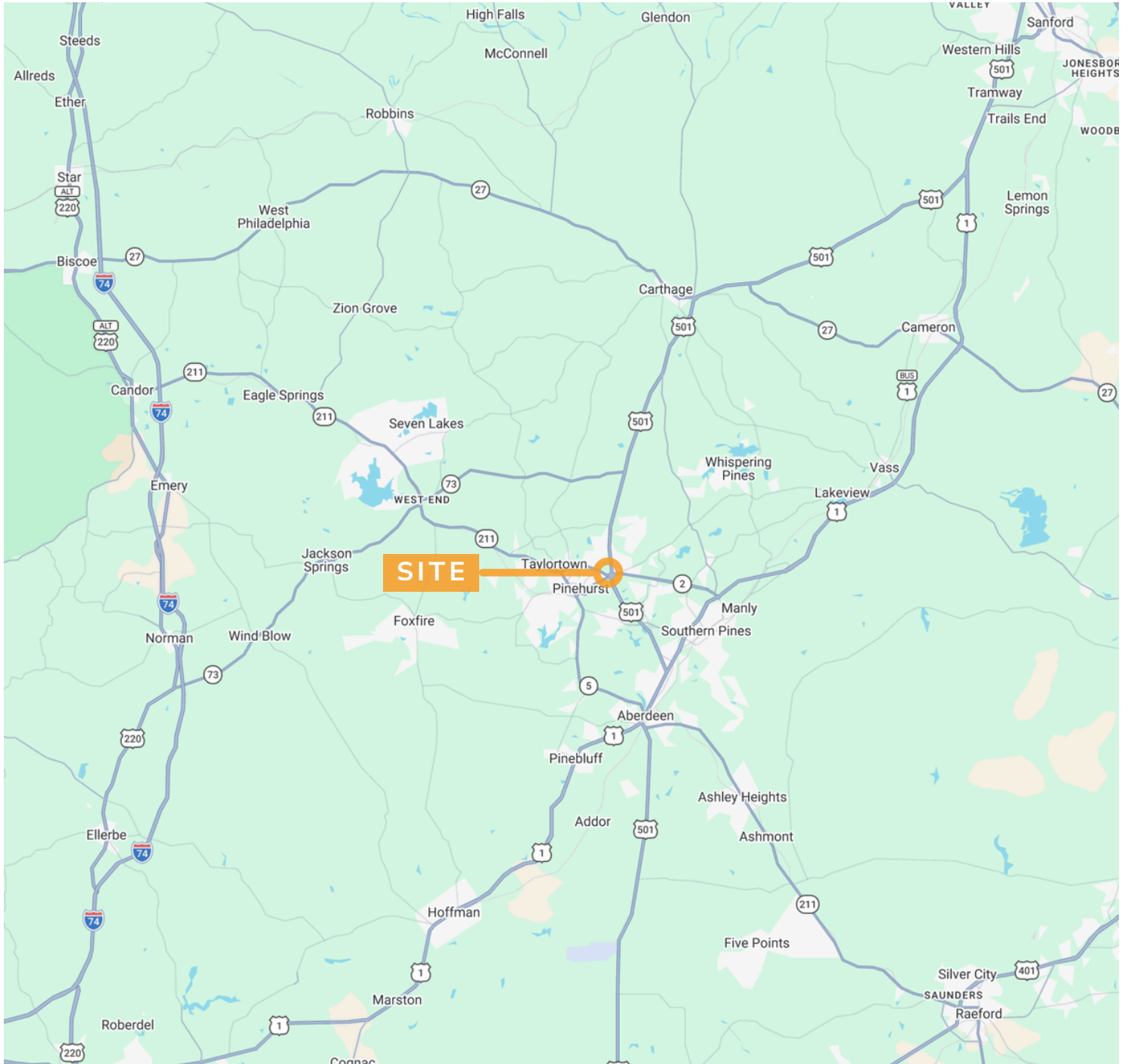
 **\$86,536**
MEDIAN HOUSEHOLD INCOME

GEORGE MANLEY
NC BROKER
C: 910.603.8395
GEORGE@CSGNC.COM

CAROLINA SUMMIT GROUP
390 SW Broad Street, Suite B
Southern Pines, NC 28387
910.684.5353
carolinasummitgroup.com

HOLLY BELL
NC BROKER
C: 910.690.1065
HOLLY@CSGNC.COM

LOCATION MAP



GEORGE MANLEY
NC BROKER
C: 910.603.8395
GEORGE@CSGNC.COM

CAROLINA SUMMIT GROUP
390 SW Broad Street, Suite B
Southern Pines, NC 28387
910.684.5353
carolinasummitgroup.com

HOLLY BELL
NC BROKER
C: 910.690.1065
HOLLY@CSGNC.COM