

Specifications

±8,716 SF
TOTAL BUILDING SIZE

92' on South Livingston Avenue
FRONTAGE

Pizzeria – 95 Seats
Restaurant – 175 Seats
SEATING CAPACITY

R-4, B-1
ZONING

1.15 AC with Easements (Paved & Fenced)
Block 4802, Lots 8, 9, 10
LOT SIZE

\$61,202.11
TAXES (2025)

81 Spaces On-Site
PARKING

±26,000 Average Vehicles Per Day
Turnkey Operation
COMMENTS

For additional property information or to arrange an inspection, please contact the exclusive brokers:

Scott G. Savastano
Executive Director
973.379.6644 x 147
SGSavastano@blauberg.com

Nicholas A. Savastano
Associate
973.379.6644 x 234
NSavastano@blauberg.com

FOR SALE | 588 SOUTH LIVINGSTON AVENUE | LIVINGSTON, NJ



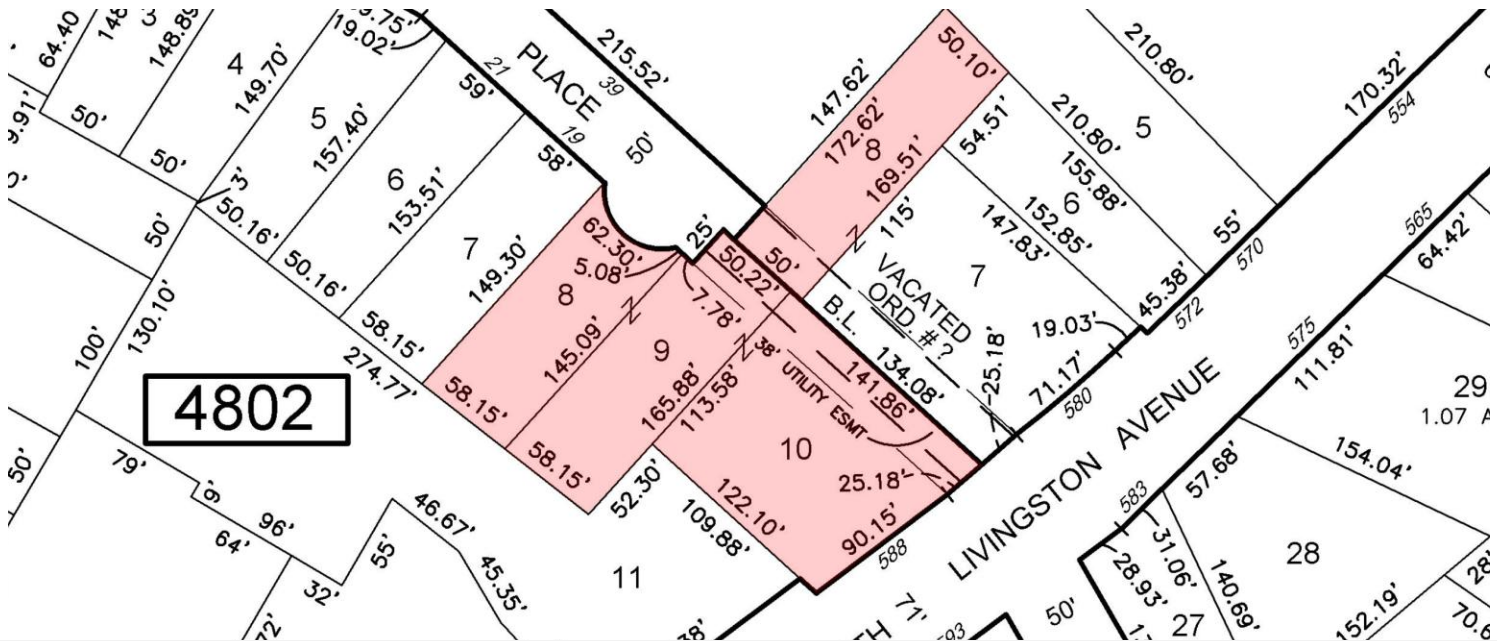
For additional property information or to arrange an inspection, please contact the exclusive brokers:

Scott G. Savastano
Executive Director
973.379.6644 x 147
SGSavastano@blauberg.com

Nicholas A. Savastano
Associate
973.379.6644 x 234
NSavastano@blauberg.com

The information contained herein has been obtained from sources considered to be reliable, but no guarantee of its accuracy is made by this company. In addition, no representation is made respecting zoning, condition of title, dimensions, or any matters of a legal or environmental nature. Such matters should be referred to legal counsel for determination. Terms and conditions are subject to change without prior notice. Subject to errors and omissions.



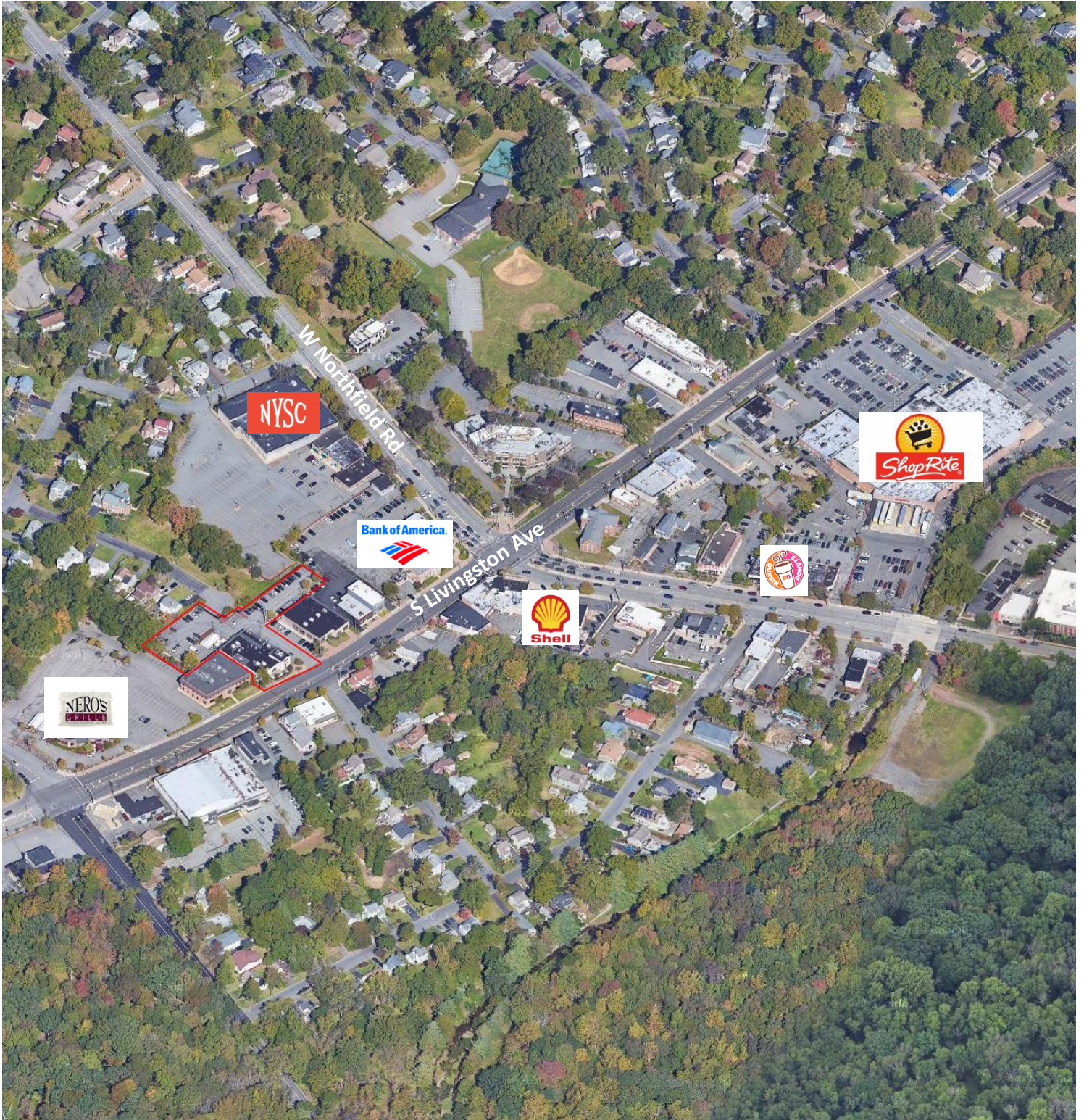


For additional property information or to arrange an inspection, please contact the exclusive brokers:

Scott G. Savastano
 Executive Director
 973.379.6644 x 147
 SGSavastano@blauberg.com

Nicholas A. Savastano
 Associate
 973.379.6644 x 234
 NSavastano@blauberg.com

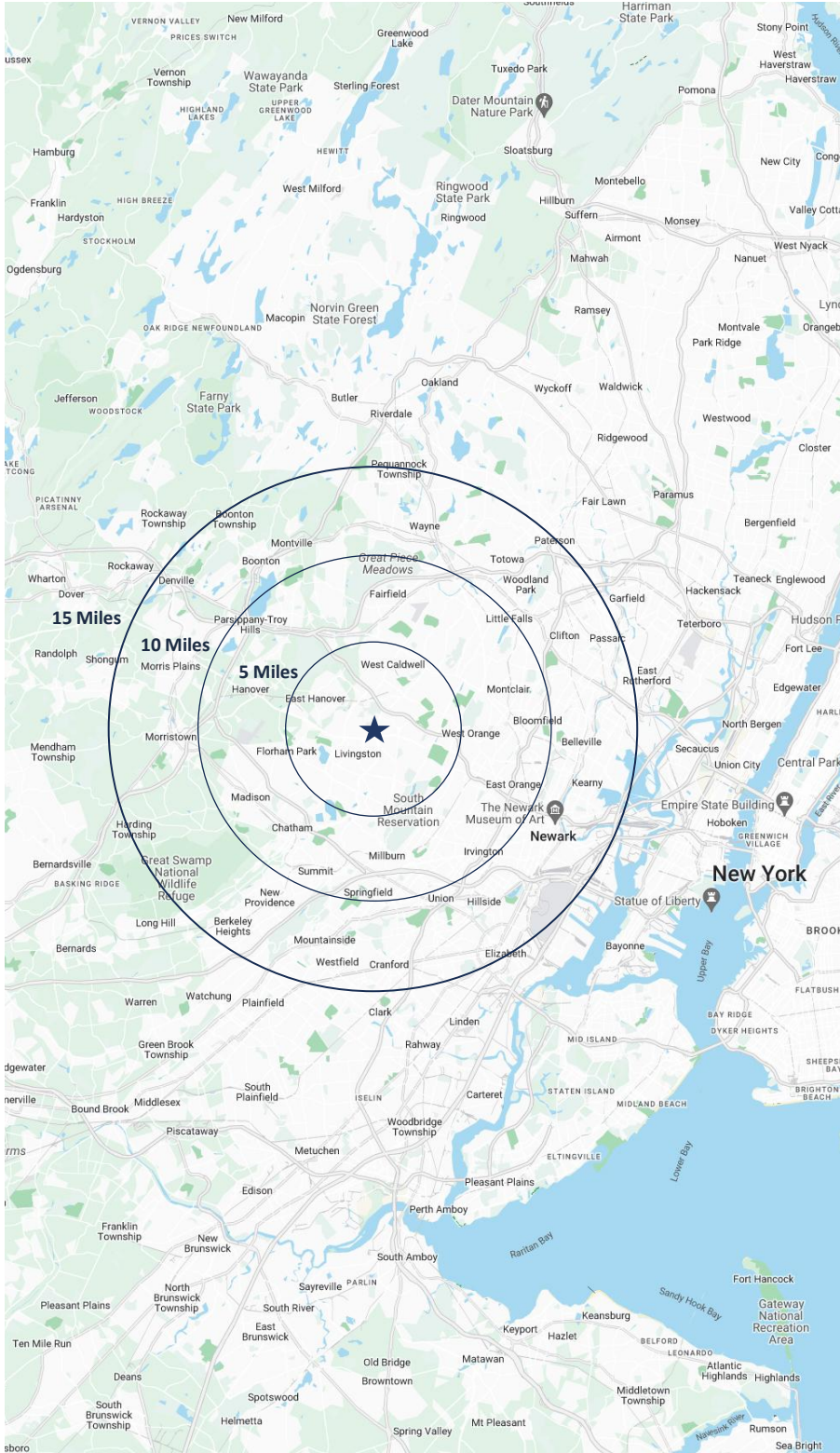
The information contained herein has been obtained from sources considered to be reliable, but no guarantee of its accuracy is made by this company. In addition, no representation is made respecting zoning, condition of title, dimensions, or any matters of a legal or environmental nature. Such matters should be referred to legal counsel for determination. Terms and conditions are subject to change without prior notice. Subject to errors and omissions.



For additional property information or to arrange an inspection,
please contact the exclusive brokers:

Scott G. Savastano
Executive Director
973.379.6644 x 147
SGSavastano@blauberg.com

Nicholas A. Savastano
Associate
973.379.6644 x 234
NSavastano@blauberg.com



5 MILES

- Total Population: 254,630
- Households: 91,517
- Median Household Income: \$176,173
- Average Household Size: 2.7
- Transportation to Work: 132,496
- Labor Force: 202,133

10 MILES

- Total Population: 1.58M
- Households: 582,334
- Median Household Income: \$119,451
- Average Household Size: 2.7
- Transportation to Work: 806,656
- Labor Force: 1.27M

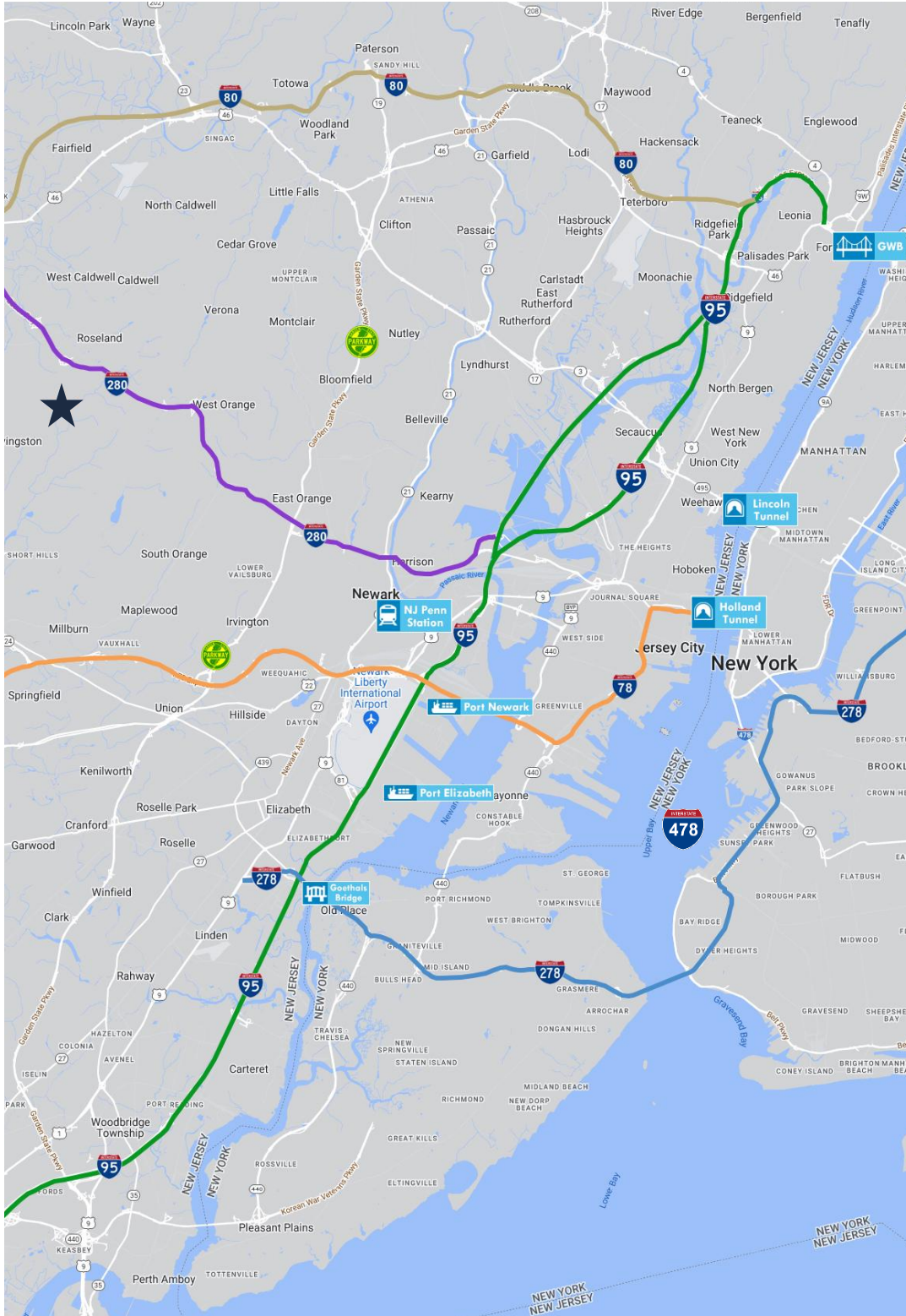
15 MILES

- Total Population: 3.25M
- Households: 1.18M
- Median Household Income: \$113,823
- Average Household Size: 2.7
- Transportation to Work: 1.66M
- Labor Force: 2.61M







For additional property information or to arrange an inspection, please contact the exclusive brokers:

Scott G. Savastano
 Executive Director
 973.379.6644 x 147
 SGSavastano@blauberg.com

Nicholas A. Savastano
 Associate
 973.379.6644 x 234
 NSavastano@blauberg.com



ACCESSIBILITY

	1.7 MI Route 10
	3.1 MI I-280
	7.3 MI I-78
	7.6 MI Garden St Pwy
	7.7 MI I-80
	10.1 MI Penn Station
	16.7 MI Ports Newark and Elizabeth
	16.9 MI Newark Airport
	17.4 MI I-95
	17.5 MI Holland Tunnel
	19.9 Lincoln Tunnel

For additional property information or to arrange an inspection, please contact the exclusive brokers:

Scott G. Savastano
Executive Director
973.379.6644 x 147
SGSavastano@blauberg.com

Nicholas A. Savastano
Associate
973.379.6644 x 234
NSavastano@blauberg.com

The information contained herein has been obtained from sources considered to be reliable, but no guarantee of its accuracy is made by this company. In addition, no representation is made respecting zoning, condition of title, dimensions, or any matters of a legal or environmental nature. Such matters should be referred to legal counsel for determination. Terms and conditions are subject to change without prior notice. Subject to errors and omissions.