



# SOUTH PARK GROUP

[www.southparkgroup.com](http://www.southparkgroup.com)



## FOR LEASE

### PRIME RETAIL

169 North La Brea Avenue  
Los Angeles, California 90036

Freestanding building at the corner of La Brea Avenue and Beverly Blvd.

#### AVAILABLE SPACE

**Size:** Approx. 7,000 sq. ft. of retail consisting of:  
4,000 sqft ground floor and 3,000 sqft mezzanine

**Rate:** \$20,000 per month, Modified Gross

**Parking:** 5 parking spaces at the rear of the property  
and additional valet parking available.

#### SAM MINASIAN

Tel. 323.782.1261

E. [samminasian@southparkgroup.com](mailto:samminasian@southparkgroup.com)

No. 01212823

SOUTH PARK GROUP | 8322 Beverly Blvd., Suite 301 | Los Angeles, CA 90048

This information has been furnished by sources that we deem reliable, but for which we assume no liability. The information contained herein is given, in confidence, with the understanding that all negotiations pertaining to this property be handled through the submitting office. All measurements are approximate.

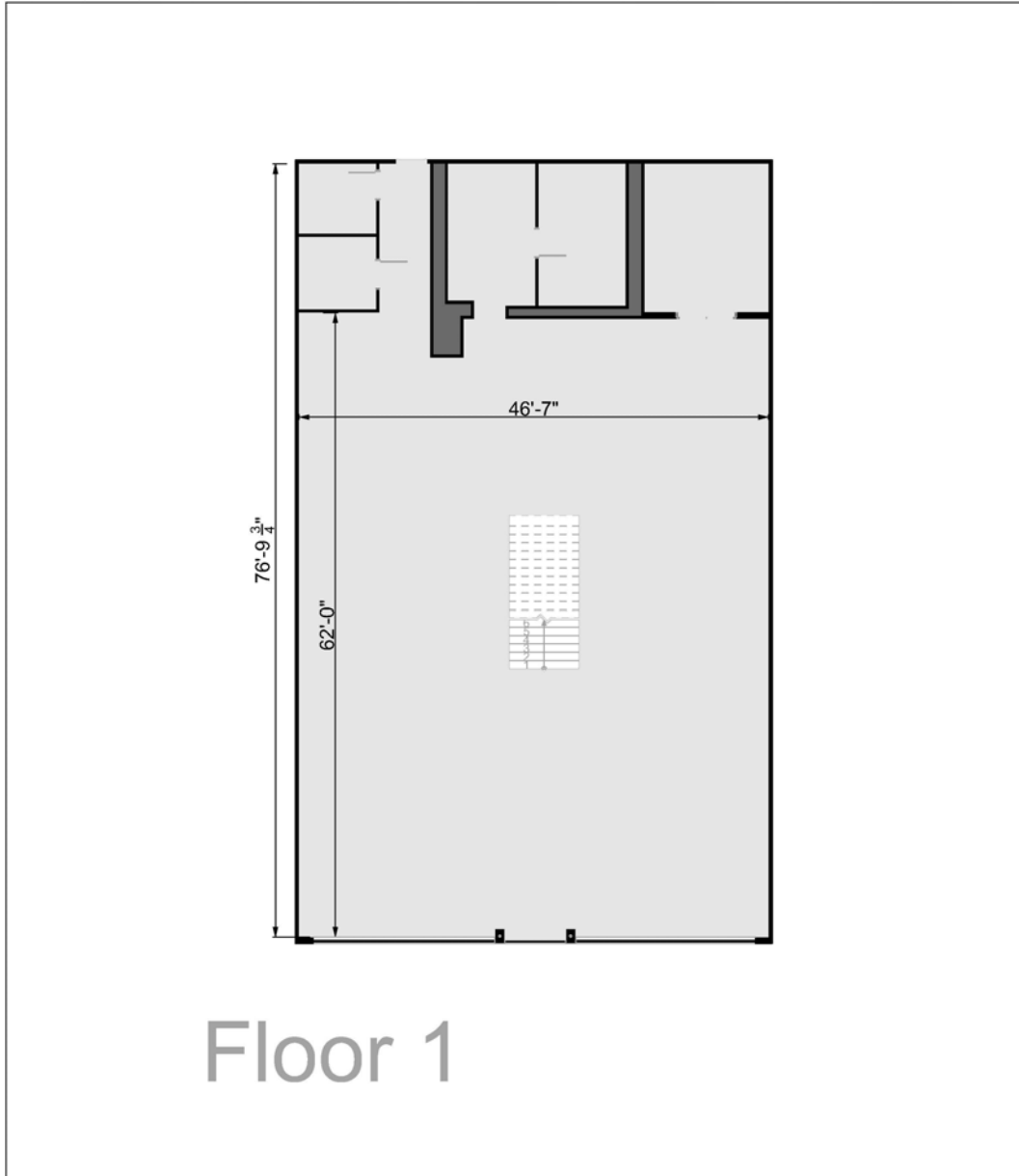


# SOUTH PARK GROUP

[www.southparkgroup.com](http://www.southparkgroup.com)

## FLOOR PLAN 1

169 N. La Brea Avenue, Los Angeles, California 90036



**SOUTH PARK GROUP | 8322 Beverly Blvd., Suite 301 | Los Angeles, CA 90048**

This information has been furnished by sources that we deem reliable, but for which we assume no liability. The information contained herein is given, in confidence, with the understanding that all negotiations pertaining to this property be handled through the submitting office. All measurements are approximate.

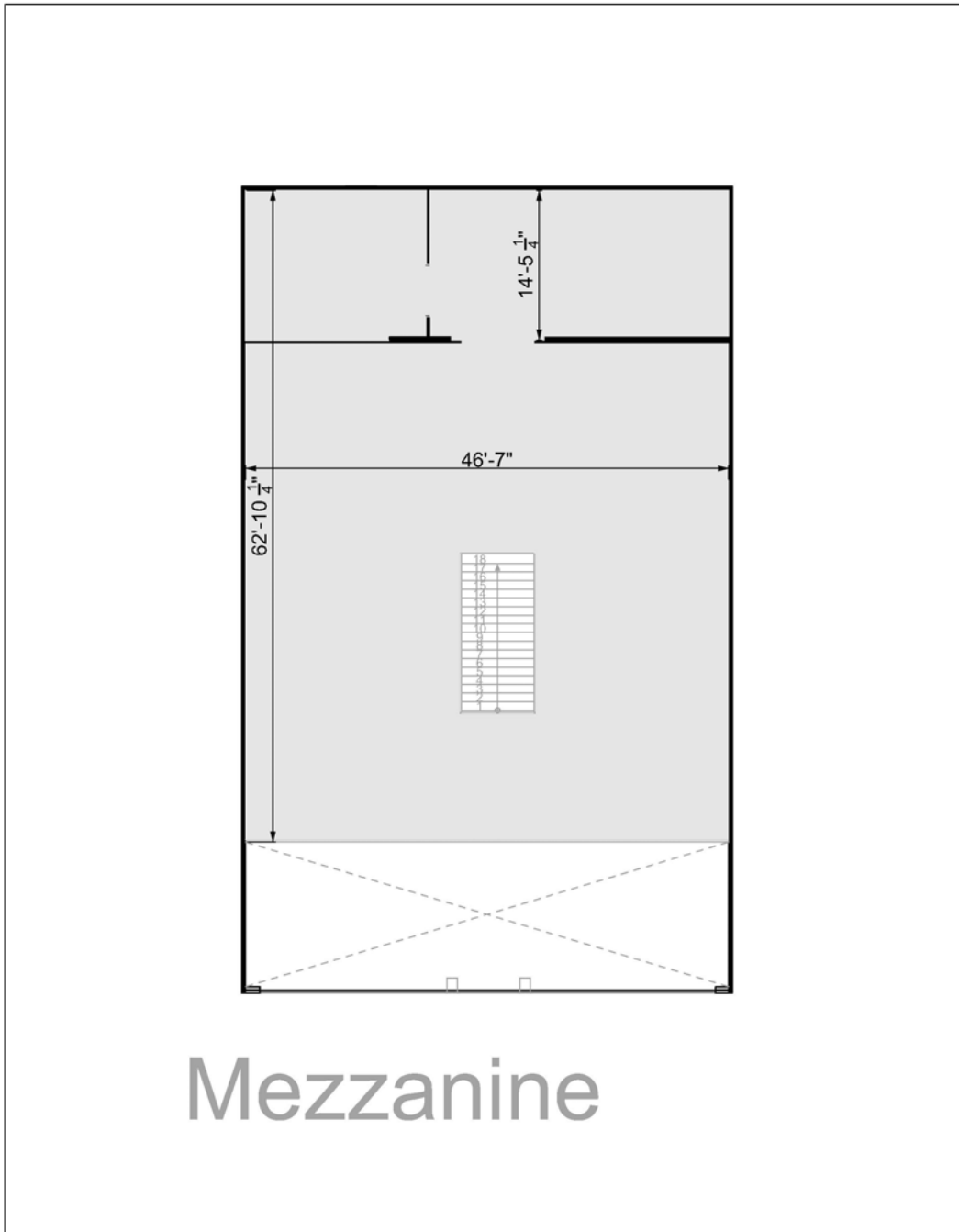


# SOUTH PARK GROUP

[www.southparkgroup.com](http://www.southparkgroup.com)

## MEZZANINE

169 N. La Brea Avenue, Los Angeles, California 90036



**SOUTH PARK GROUP | 8322 Beverly Blvd., Suite 301 | Los Angeles, CA 90048**

This information has been furnished by sources that we deem reliable, but for which we assume no liability. The information contained herein is given, in confidence, with the understanding that all negotiations pertaining to this property be handled through the submitting office. All measurements are approximate.



# SOUTH PARK GROUP

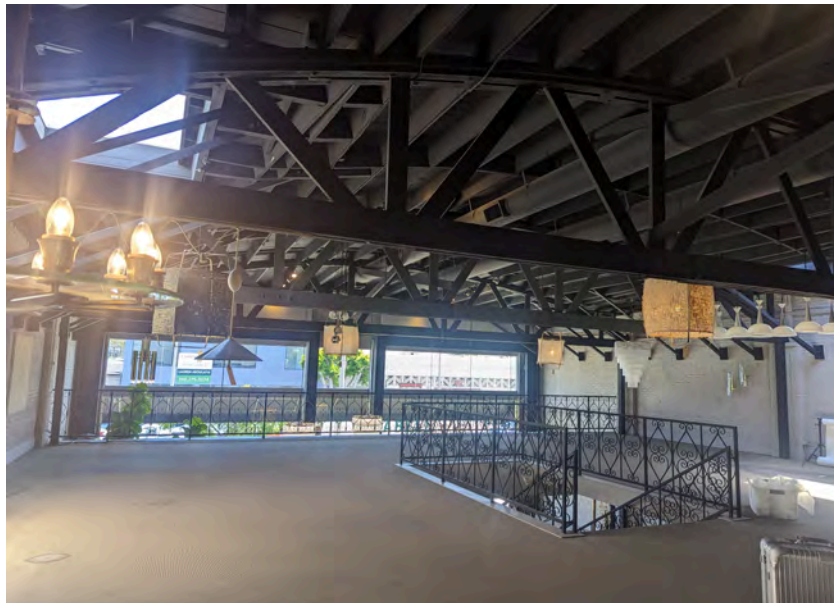
[www.southparkgroup.com](http://www.southparkgroup.com)

## INTERIOR

169 N. La Brea Avenue, Los Angeles, California 90015



### FIRST FLOOR



### SECOND FLOOR

**SOUTH PARK GROUP | 8322 Beverly Blvd., Suite 301 | Los Angeles, CA 90048**

This information has been furnished by sources that we deem reliable, but for which we assume no liability. The information contained herein is given, in confidence, with the understanding that all negotiations pertaining to this property be handled through the submitting office. All measurements are approximate.