



FOR LEASE

OFFICE/FLEX SPACE WITH PARKING

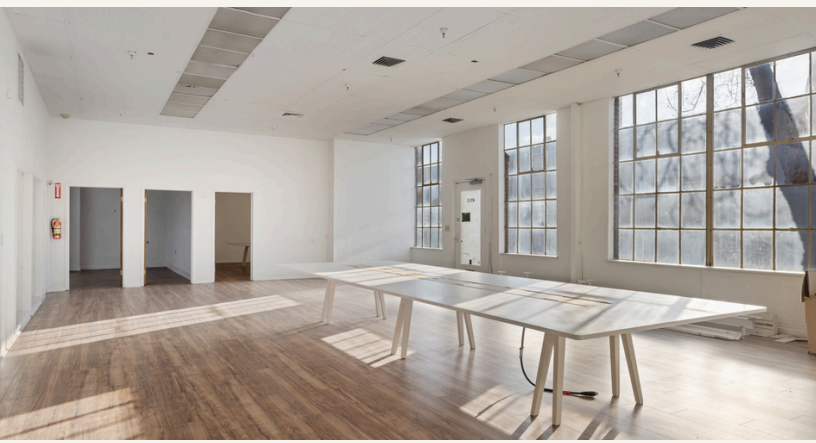


4512 Hollis Street,
Emeryville, CA 94608

Virtual Tour
Click here



SCAN OR CLICK TO VIEW
VIRTUAL TOUR



Size: ± 6,000 SF

PRICE

\$1.70 PSF/month NNN
(NNNs est. at \$0.46 PSF/month)



PROPERTY HIGHLIGHTS:


- ✓ Office/flex space within classic Emeryville brick warehouse.
- ✓ Frontage and entrance on Hollis Street.
- ✓ Layout features office area in front with open warehouse space in the rear.
- ✓ Two (2) in-suite restrooms.
- ✓ Kitchenette
- ✓ Full HVAC servicing the office area.
- ✓ Large parking lot with plenty of off-street spaces.
- ✓ Building is sprinklered.

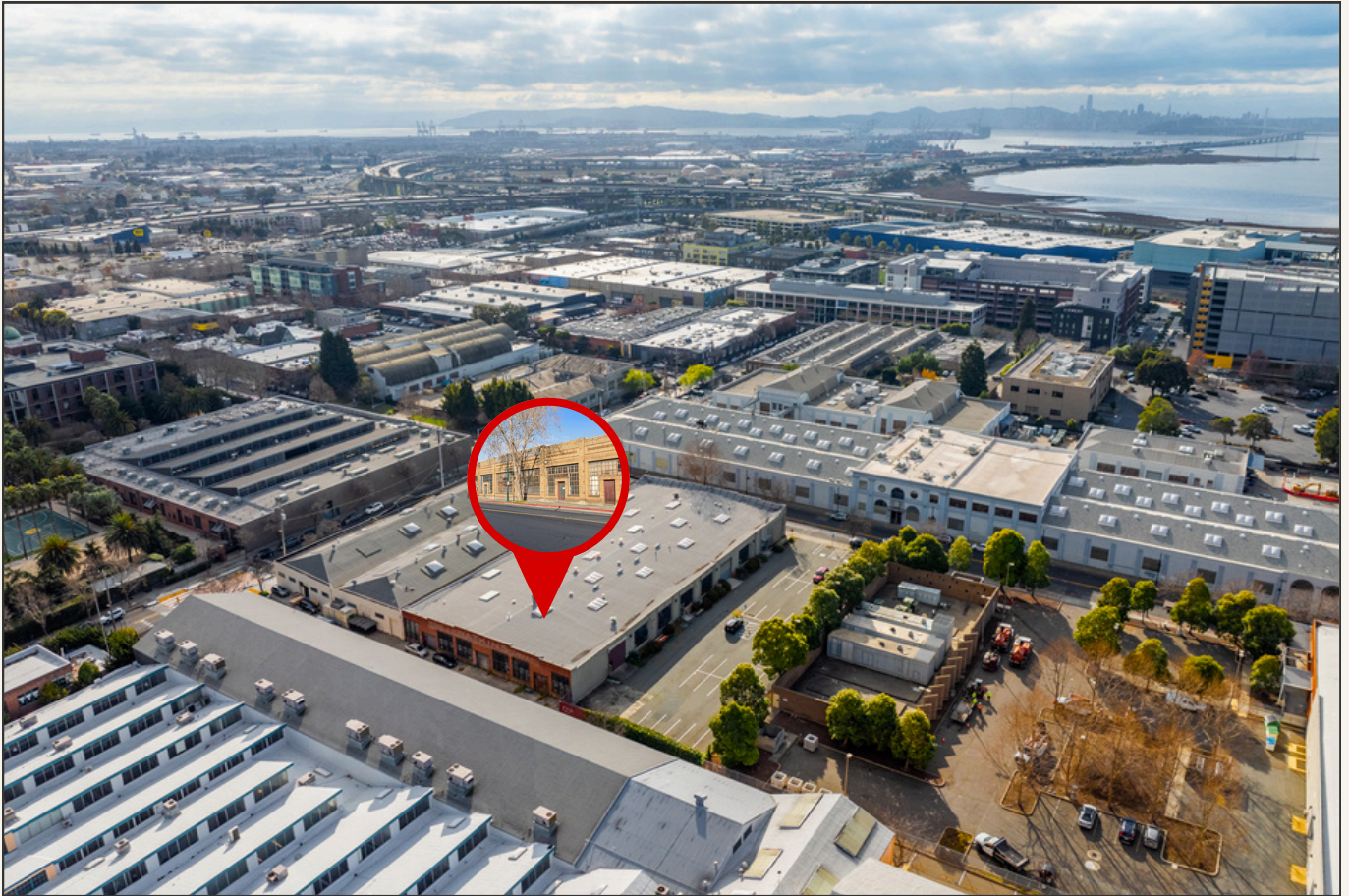
4512 HOLLIS STREET, EMERYVILLE, CA 94608

FRONTAGE AND PARKING



MAPS & LOCATION

 4512 Hollis Street, Emeryville, CA 94608



CONTACT US



Colby Katz

(510)450-1420

ckatz@mrecommercial.com

LIC# 01949015



Francis Griffin

(510)450-1405

fgriffin@mrecommercial.com

LIC# 02016713



www.mrecommercial.com