

FOR LEASE: ± 14,400 SF INDUSTRIAL BUILDING

6644 GORDON ROAD

WILMINGTON, NC | NEW HANOVER COUNTY





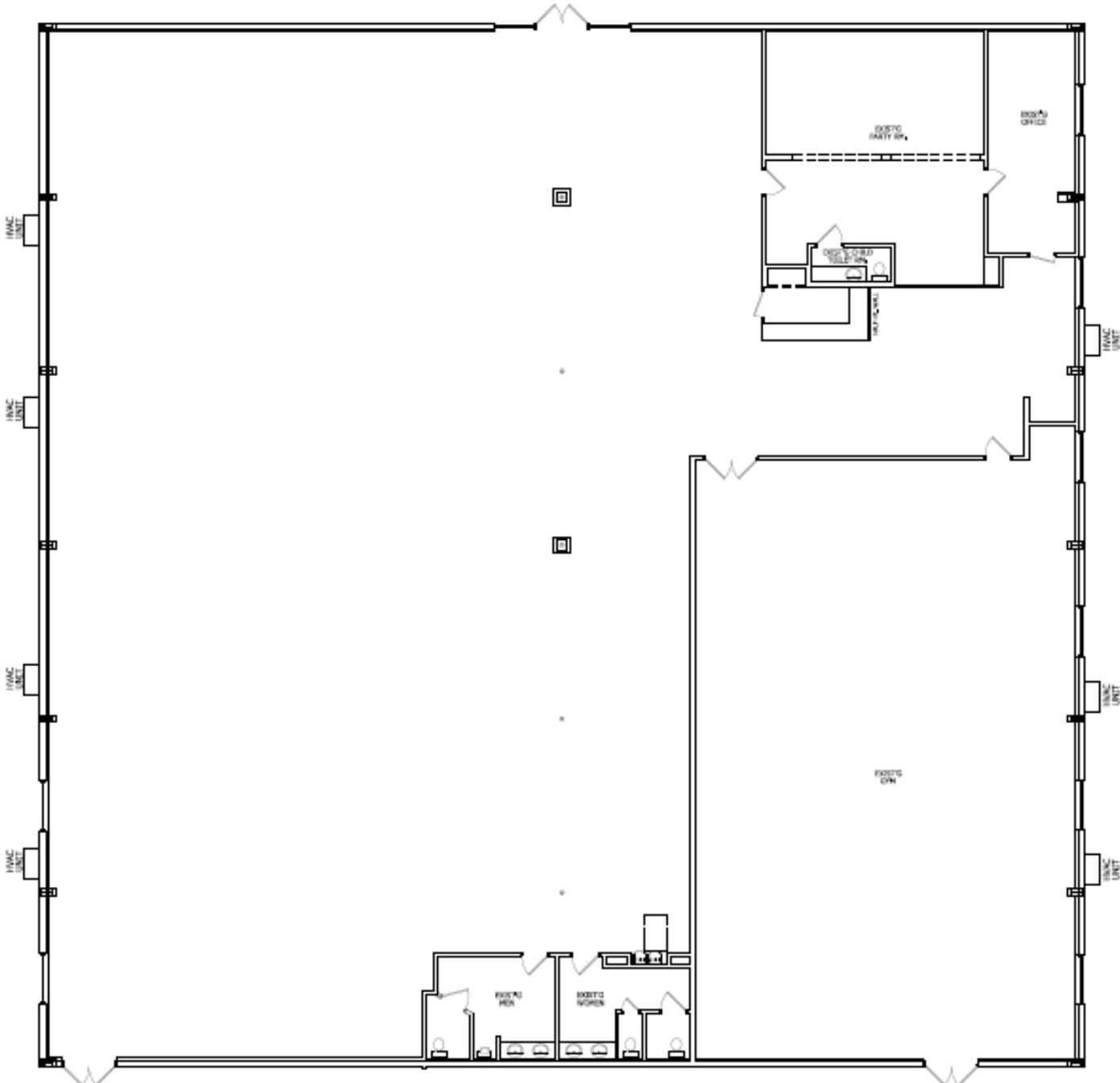
SUMMARY

ADDRESS	6644 Gordon Road Wilmington, NC 28411 New Hanover County
SQUARE FOOTAGE	± 14,400 SF
ACREAGE	± 1.55 Acres ± 0.50 Acre Fenced Laydown Yard
PARCEL ID	R04316-002-003-000
ZONING	I-1 (Industrial District)
LEASE RATE	\$16.00/sf NNN
TAXES & INSURANCE	\$1.96 /sf
DESCRIPTION	+/- 14,400 SF freestanding Industrial building with 44 marked parking spaces. Subject sits on ± 1.55 acres with approximately ± 0.50 acre fenced laydown yard. Building is fully climate controlled with eave heights of 9.6' to 18'. Property features direct connectivity to the greater Wilmington area with the extension of Military Cutoff connecting Market Street directly to I-140.

PHOTOS



FLOORPLAN



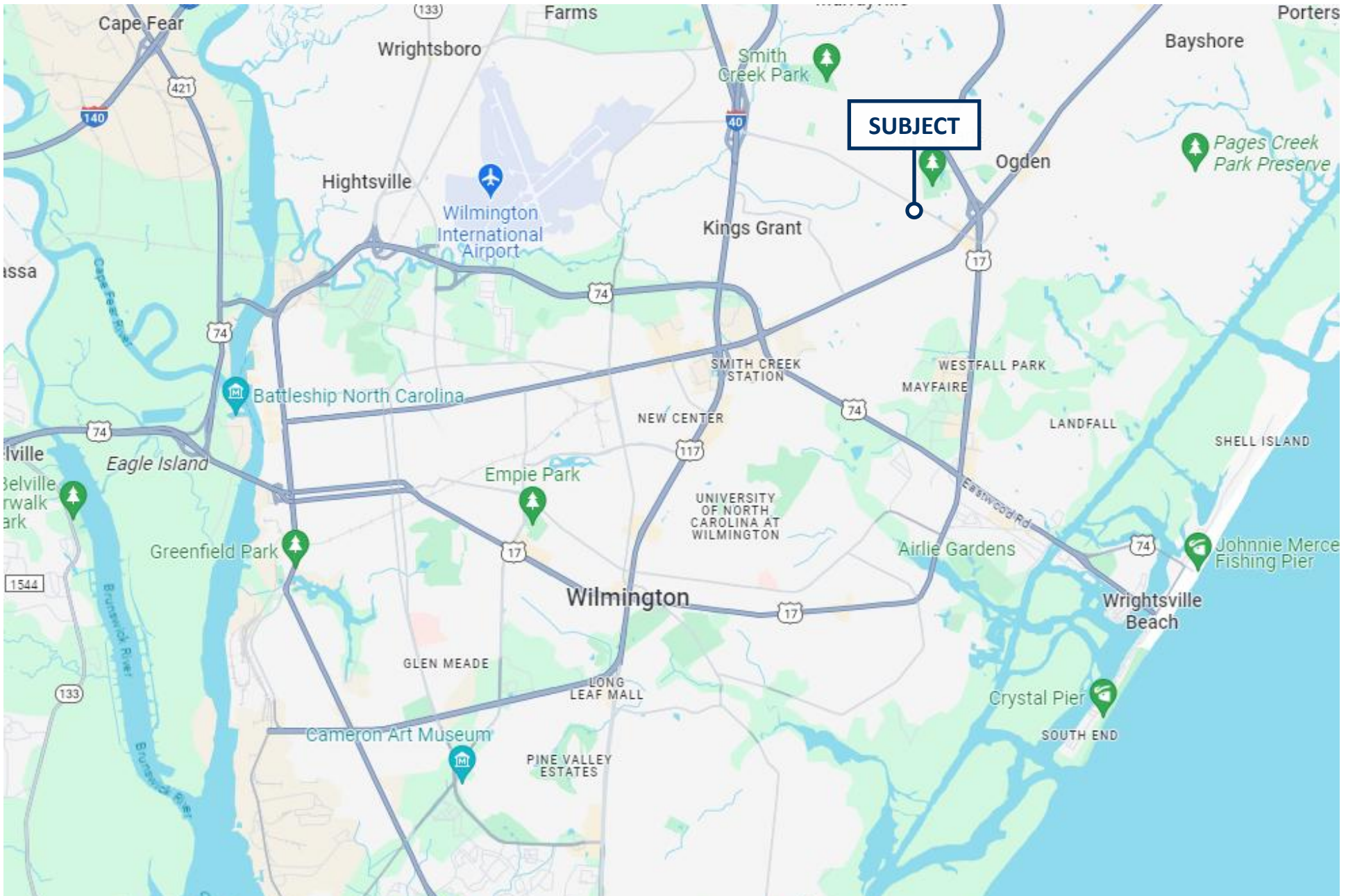
GIS AERIAL



AERIAL MAP



LOCATION MAP





Cape Fear Commercial

PATRICK RILEY, CCIM

Senior Vice President

910.344.1018 direct

910.264.2153 cell

patrick@capefearcommercial.com

JASON MCLEOD

Senior Vice President

910.332.1648 direct

910.262.3818 cell

jason@capefearcommercial.com



102 Autumn Hall Drive | Suite 210 | Wilmington, NC 28403
capefearcommercial.com

© 2023 Cape Fear Commercial, LLC. All rights reserved. The information contained in the following Marketing Brochure is proprietary and strictly confidential. It is intended to be reviewed only by the party receiving it from Cape Fear Commercial and should not be made available to any other person or entity without the written consent of Cape Fear Commercial. This Marketing Brochure has been prepared to provide summary, unverified information to prospective purchasers, and to establish only a preliminary level of interest in the Subject property. The information contained herein is not a substitute for a thorough due diligence investigation. Cape Fear Commercial has not made any investigation, and makes no warranty or representation, with respect to the income or expenses for the Subject property, the future projected financial performance of the property, the size and square footage of the property and improvements, the presence or absence of contaminate substances, PCB's or asbestos, the compliance with State and Federal regulations, the physical condition of the improvements thereon, or the financial condition or the business prospects of any tenant's plans or intentions to continue its occupancy of the Subject property. The information contained in this Marketing Brochure has been obtained from sources we believe to be reliable; however, Cape Fear Commercial has not verified, and will not verify, any of the information contained herein, nor has Cape Fear Commercial conducted any investigation regarding these matters and makes no warranty or representation whatsoever regarding the accuracy or completeness of the Information provided. All potential buyers must take appropriate measures to