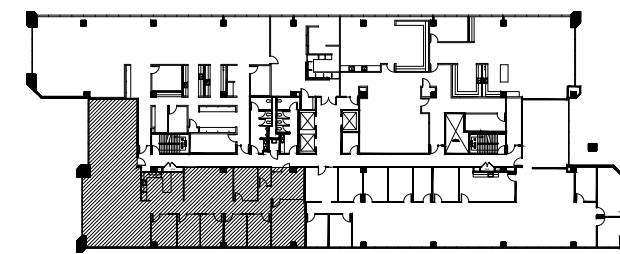


- * NOT FOR CONSTRUCTION
- * ROOM SIZES ARE APPROXIMATE
- * APPLIANCES AND EQUIPMENT SHOWN ARE FOR GRAPHIC PURPOSES ONLY
- * TENANT TO CONFIRM FURNITURE WILL FIT WITHIN PROPOSED PLAN
- * PLAN PROVIDED FOR GRAPHIC PURPOSES ONLY
- * THE idGROUP HAS NOT FIELD VERIFIED FLOOR
- * PLAN PENDING CITY APPROVAL

SPEC SUITE 525



KEYPLAN - 5TH FLOOR



1250 MOCKINGBIRD

1250 W. MOCKINGBIRD LN. DALLAS, TX 75247

SPACE PLAN #1.0 SUITE #525 4,051 RSF 08-06-2025

