

# FOR LEASE

1427 W. Saginaw Street, East Lansing, MI



## Professional Office Space Pointe Professional Center

### SPACE AVAILABLE:

- Suite 200: 4,761 SF
- Suite 220: 4,765 SF
- Can be combined for a total of 9,526 SF

### PROPERTY INFORMATION:

- Multi-tenant 19,546 SF building anchored by Fifth Third Bank
- Open plan space with numerous windows ideal for tech user
- Raised floor to accommodate technology and floor plan changes
- Shared lobby on second floor with key card access
- Approx. 56 parking spaces (includes 2 handicapped and 5 reserved spaces)
- Adjacent to Biggby Coffee with multiple ingress/egress points
- Located on the corner of Coolidge and Saginaw near Frandor Shopping Center
- High profile exposure with potential building signage

### LEASE RATE:

# \$22.00

PSF/YR, PLUS JANITORIAL

### FOR MORE INFORMATION:

#### **Eric F. Rosekrans, CCIM, CPM**

Executive Vice President

Direct: 517 319-9209

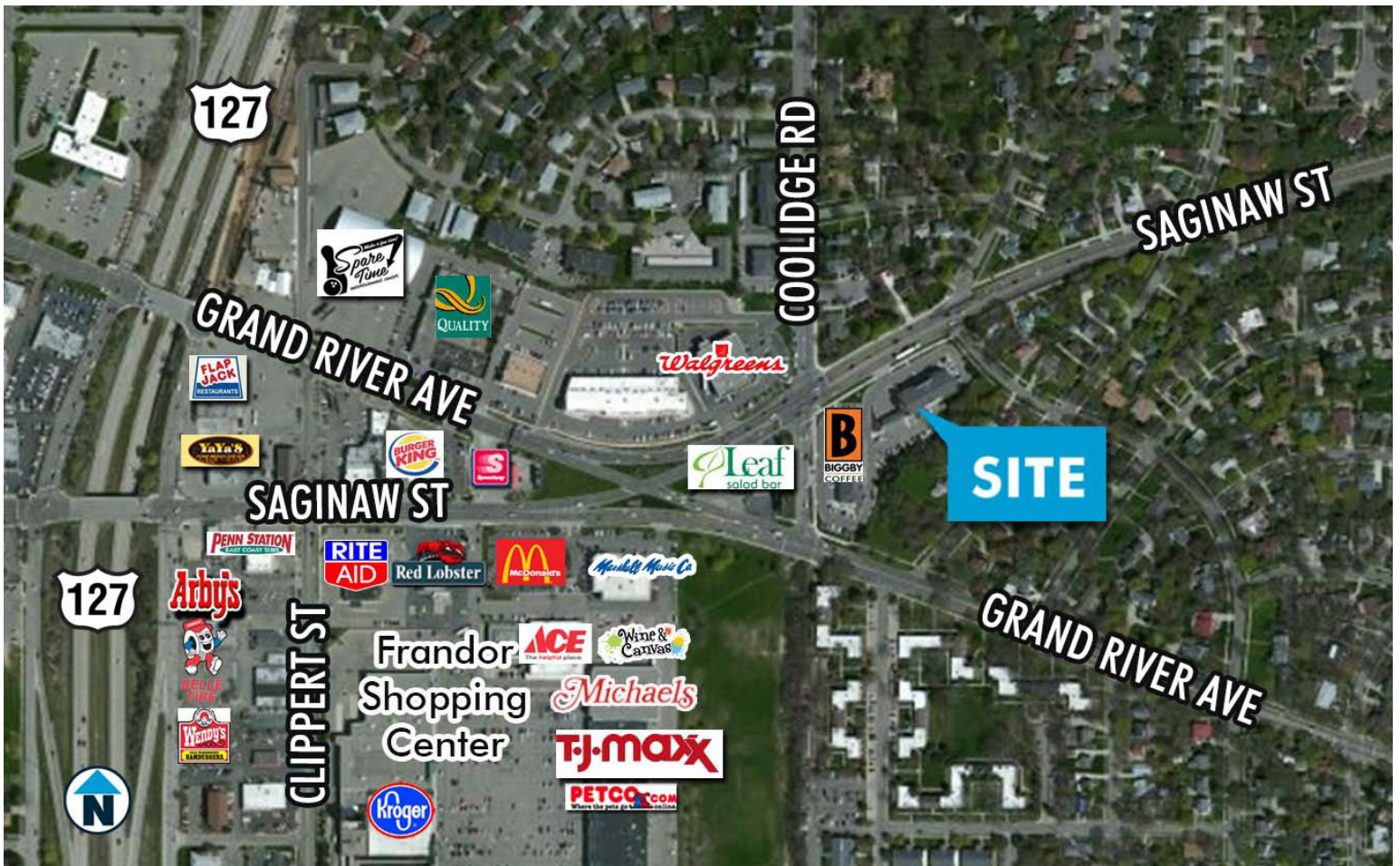
[eric.rosekrans@martincommercial.com](mailto:eric.rosekrans@martincommercial.com)

#### **Thomas Jamieson, SIOR**

Senior Vice President, Office Advisor

Direct: 517 319-9235

[thomas.jamieson@martincommercial.com](mailto:thomas.jamieson@martincommercial.com)



AREA INFORMATION:

**0.6 Miles**

To US-127 Highway Entrance

**1.3 Miles**

To Michigan State University

**2 Miles**

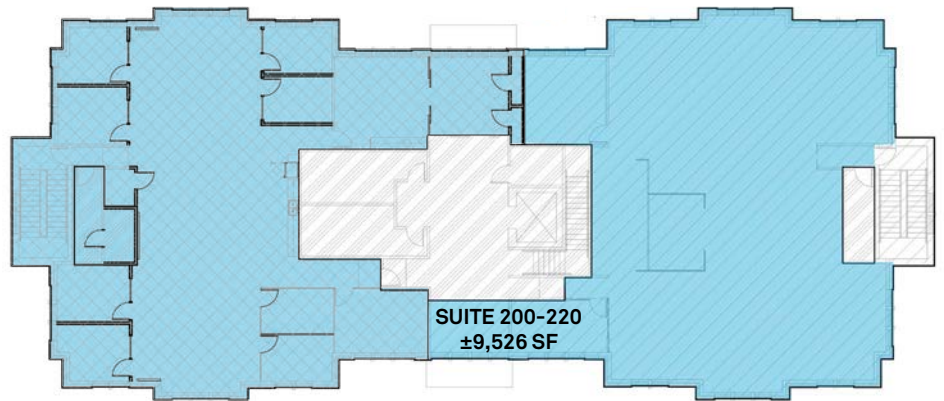
To Eastwood Towne Center

**3.3 Miles**

To Downtown Lansing

**Walking Distance**

To restaurants, shopping, services and more!





Suite 200 Photos





Suite 220 Photos

