

INLAND TERRACE CORPORATE CENTER PROFESSIONAL OFFICES FOR LEASE

27368 VIA INDUSTRIA - TEMECULA, CA 92590



PROPERTY HIGHLIGHTS:

- 7,166 SF - 15,908 SF Suites Available For Lease
- Class A office building
- Elevator served
- Views of the Temecula Valley
- Ample parking
- Two story lobby
- Outdoor patio



JIM NADAL, CCIM • 951.445.4520 • jnadal@leetemecula.com • DRE #01040679

INLAND TERRACE CORPORATE CENTER PROFESSIONAL OFFICES FOR LEASE

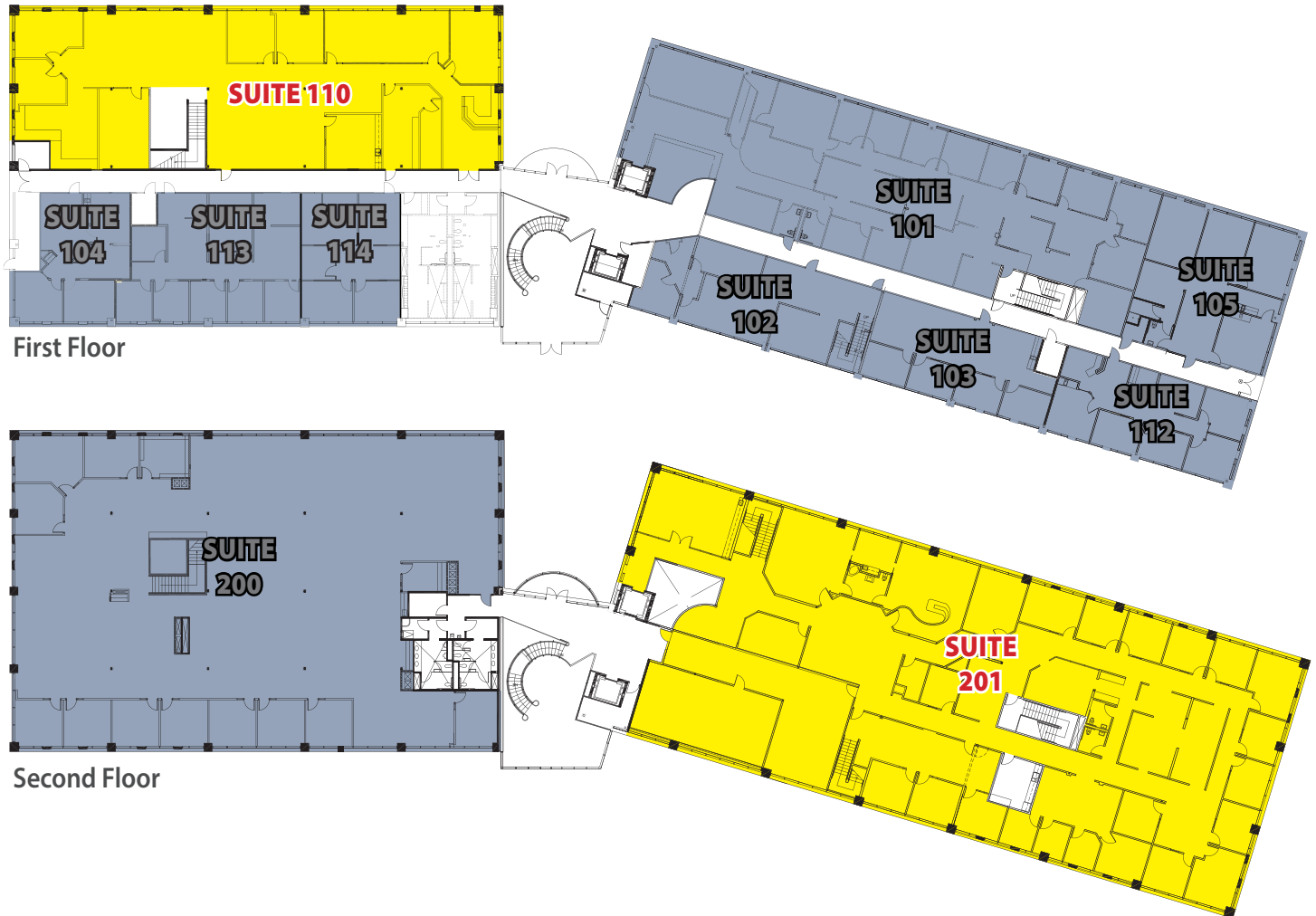
27368 VIA INDUSTRIA - TEMECULA, CA 92590

AVAILABLE SPACE - 1ST FLOOR

Suite	SF (±)	Rate/SF	Description
110	7,166	\$1.75	First floor suite off of the lobby with a combination of private offices and open bullpen areas.

AVAILABLE SPACE - 2ND FLOOR

Suite	SF (±)	Rate/SF	Description
201	15,908	\$1.75	Perfect corporate headquarters with views over the Temecula Valley. Available 8/1/26. Contact Agent to Tour.

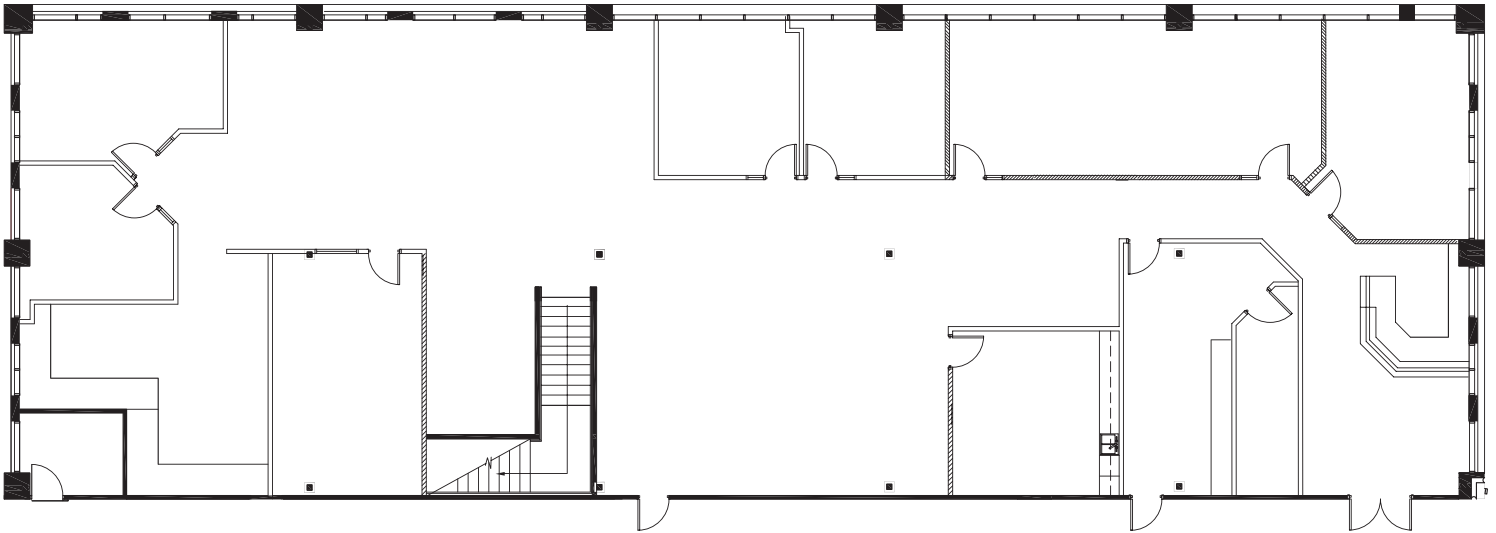


JIM NADAL, CCIM • 951.445.4520 • jnadal@leetemecula.com • DRE #01040679

INLAND TERRACE CORPORATE CENTER PROFESSIONAL OFFICES FOR LEASE

27368 VIA INDUSTRIA - TEMECULA, CA 92590

Suite 110
±7,166 SF

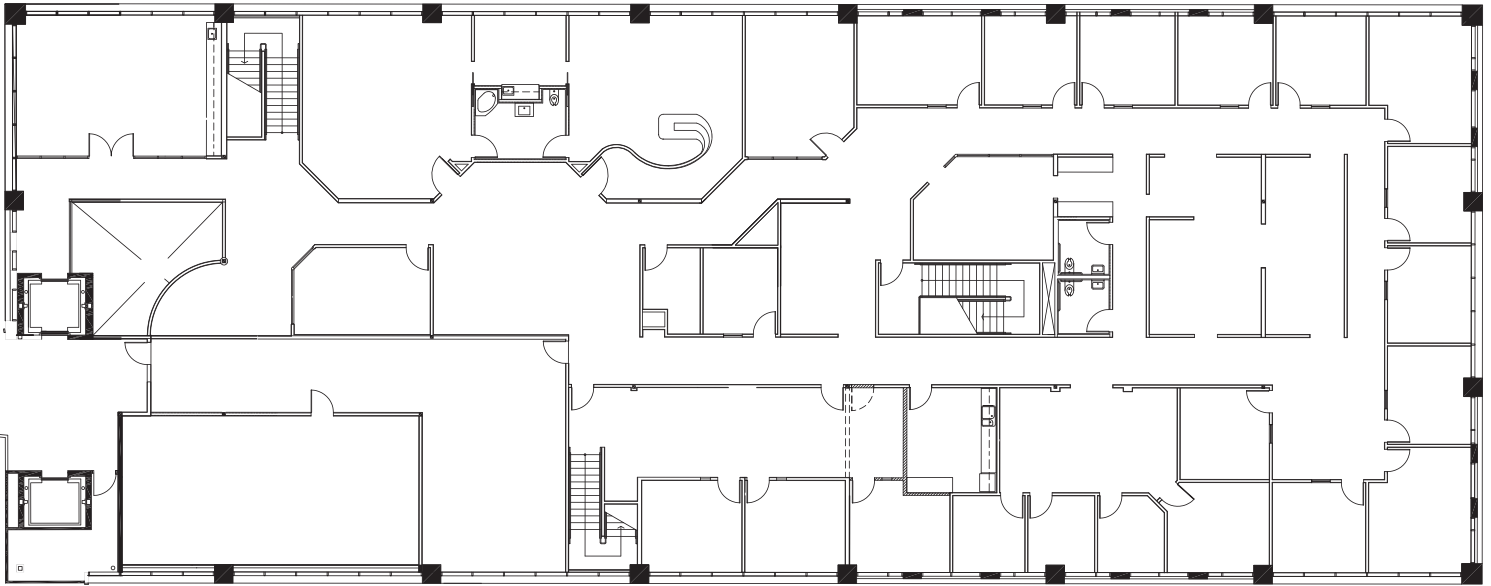


JIM NADAL, CCIM • 951.445.4520 • jnadal@leetemecula.com • DRE #01040679

INLAND TERRACE CORPORATE CENTER PROFESSIONAL OFFICES FOR LEASE

27368 VIA INDUSTRIA - TEMECULA, CA 92590

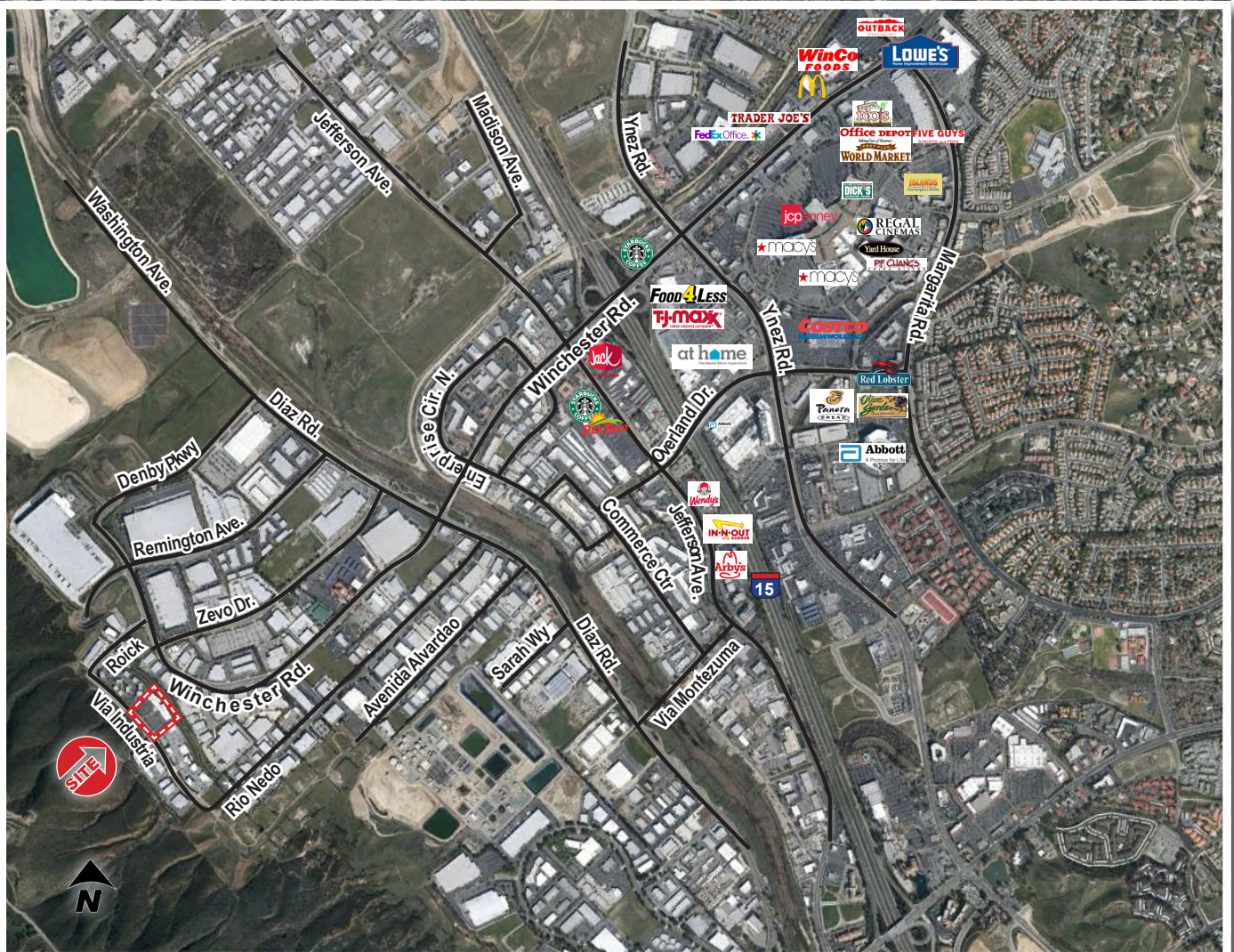
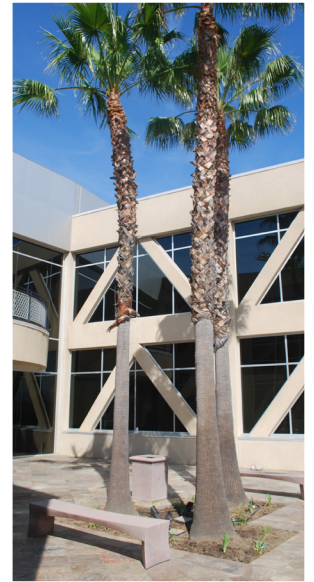
Suite 201
±15,908 SF



JIM NADAL, CCIM • 951.445.4520 • jnadal@leetemecula.com • DRE #01040679

INLAND TERRACE CORPORATE CENTER PROFESSIONAL OFFICES FOR LEASE

27368 VIA INDUSTRIA - TEMECULA, CA 92590



JIM NADAL, CCIM • 951.445.4520 • jnadal@leetemecula.com • DRE #01040679