

Low DuPage County Taxes



249 W. Lake Ave Elmhurst, IL

- Available Size: 14,100 SF
- Building Size: 14,100 SF
- Site Size: 4.31 acres
- Office Size: 3,600 SF
- Ceiling Height: 18' clear
- Loading: 8 grade level doors
- Car Parking: 40+ spaces
- Trailer Parking: 100+ stalls
- Sublease term through June 2027
- Available November 1, 2025
- Sublease Rate: Subject to Offer
- Low DuPage County taxes
- Close proximity to I-290, I-294, and O'Hare Airport

FOR SUBLEASE

14,100 SF
on 4.31 acres

Contact:

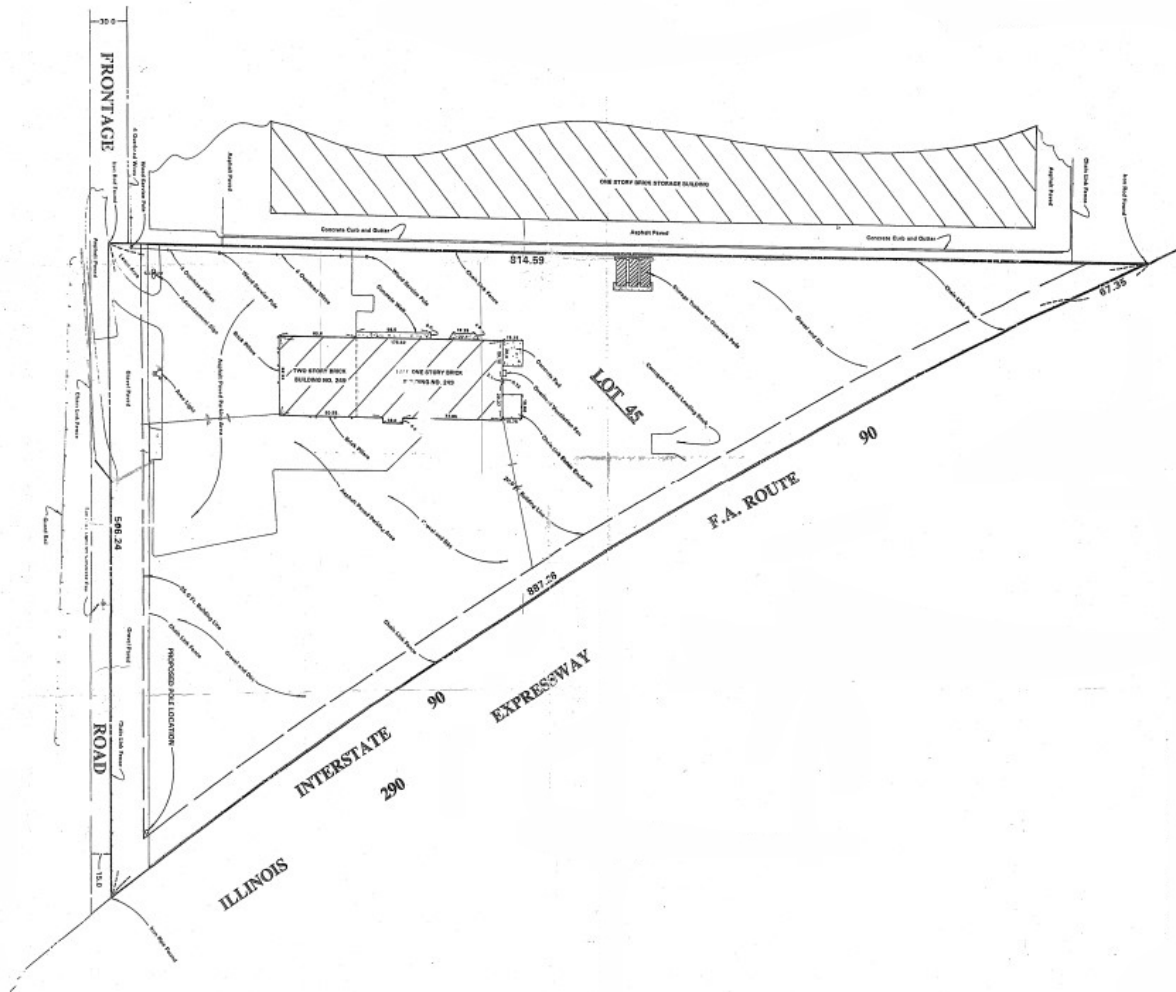
Patrick Turner
Executive Vice President
+1 847 698 8277
patrick.turner@colliers.com

Tom Rodeno
Vice Chair
+1 847 698 8231
tom.rodeno@colliers.com

Rob Sullivan
Associate
+1 847 698 8204
robert.jsullivan@colliers.com

Colliers
6250 N. River Rd., Suite 11-100
Rosemont, IL 60018

Survey



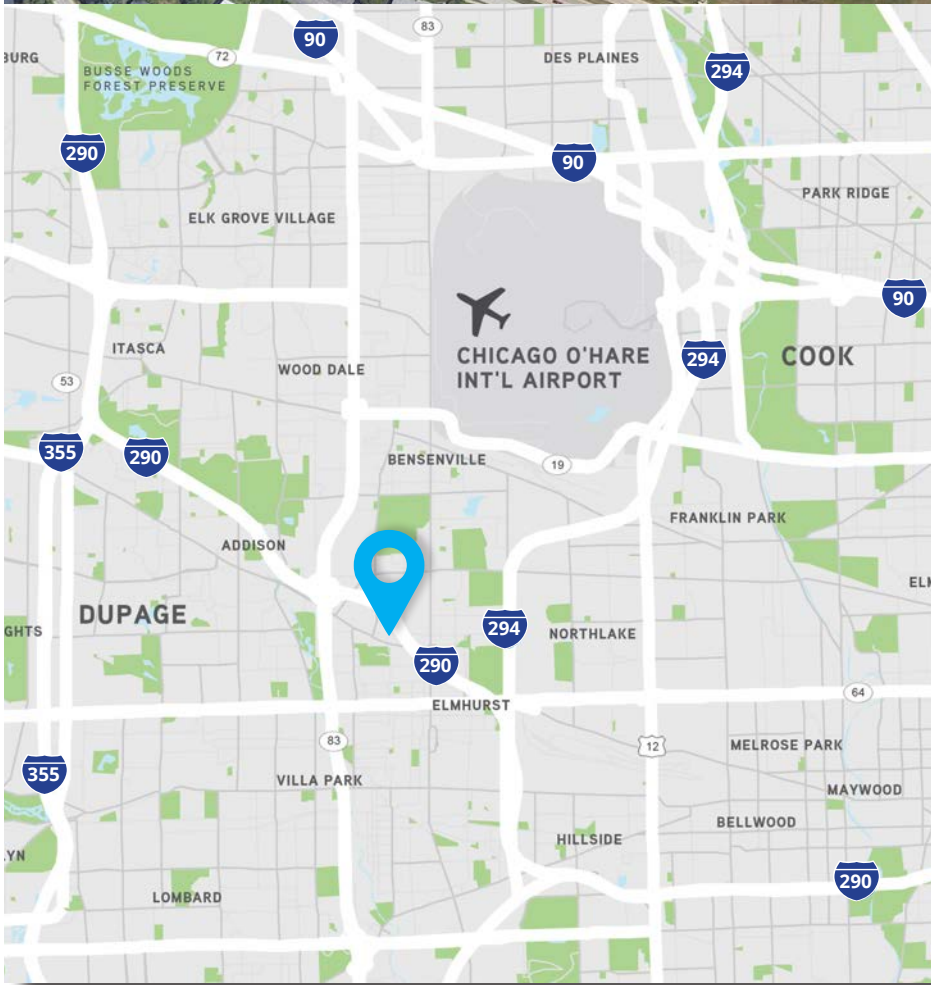
Patrick Turner
Executive Vice President
+1 847 698 8277
patrick.turner@colliers.com

Tom Rodeno
Vice Chair
+1 847 698 8231
tom.rodeno@colliers.com

Rob Sullivan
Associate
+1 847 698 8204
robert.jsullivan@colliers.com



Location



DISTANCE FROM SITE

- 1 Mile to I-290/York Rd.
- 2.5 Miles to Route 83 4-Way Interchange
- 3 Miles to I-290/I-294 Interchange
- 5 Miles to I-88
- 6 Miles to I-290/I-355 4-way Interchange
- 8 Miles to O'Hare Airport

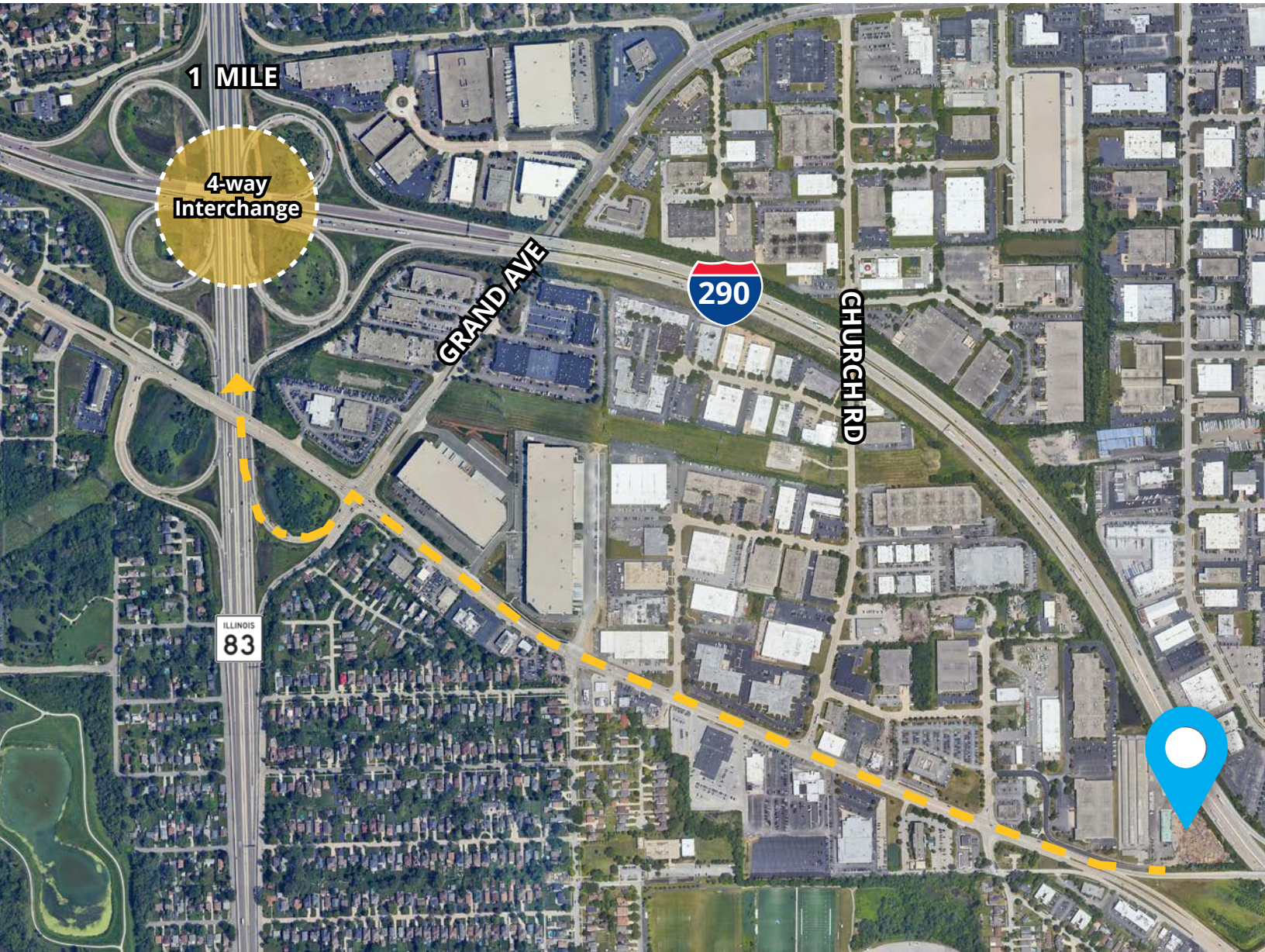
Patrick Turner
Executive Vice President
+1 847 698 8277
patrick.turner@colliers.com

Tom Rodeno
Vice Chair
+1 847 698 8231
tom.rodeno@colliers.com

Rob Sullivan
Associate
+1 847 698 8204
robert.jsullivan@colliers.com



Location



Patrick Turner
Executive Vice President
+1 847 698 8277
patrick.turner@colliers.com

Tom Rodeno
Vice Chair
+1 847 698 8231
tom.rodeno@colliers.com

Rob Sullivan
Associate
+1 847 698 8204
robert.jsullivan@colliers.com

