

FOR LEASE RETAIL/OFFICE SPACE

FREYA

8309 15th Avenue NW, Seattle, WA 98117

AVAILABLE
NOW



For more information please contact:

LAURA MILLER
laura@gibraltarusa.com
206.351.3573



8309 15TH AVENUE NW, SEATTLE, WA 98117

FREYA



PROPERTY HIGHLIGHTS

- Rare opportunity to lease small retail storefront ideal for salon, boutique retail, or creative/service office tenant
- Highly visible, easily accessible location in Seattle's densely populated Ballard neighborhood, where hip vibes meet thriving dining hot spots, boutiques, and nightlife
- Located at the base of the FREYA, a modern 78-unit apartment building
- Modern and light-filled retail space features large storefront windows, ADA bathroom, HVAC, and polished concrete floors
- 549 Sq Ft
- Rental Rate \$1,795/month modified gross. Tenant pays electricity separately.



53

TRANSIT SCORE



87

WALK SCORE



76

BIKE SCORE



95,439

TOTAL POPULATION



44,307

TOTAL HOUSEHOLDS



\$129,005

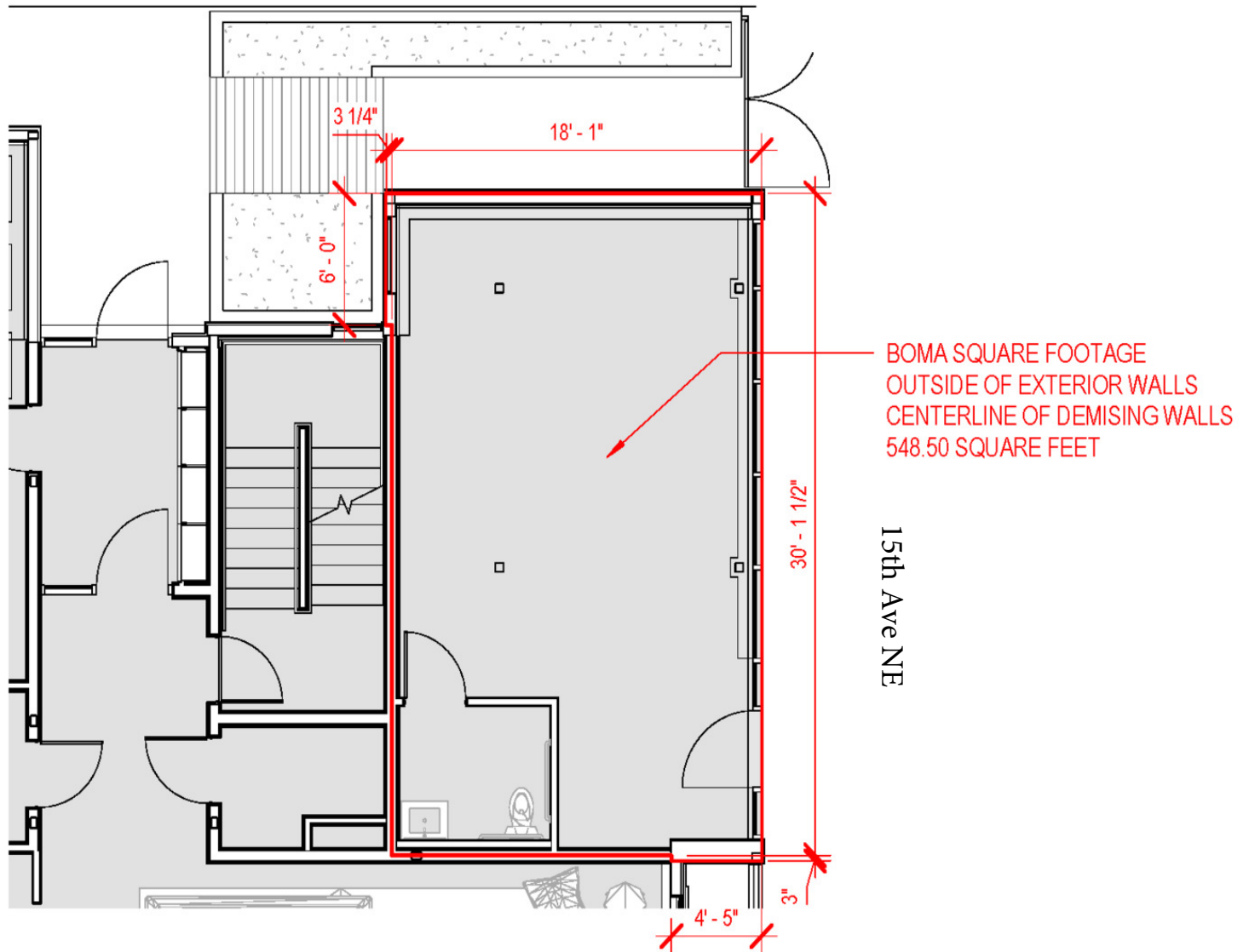
MEDIAN INCOME

* Estimated 2024 Demographics based on a 2-mile radius

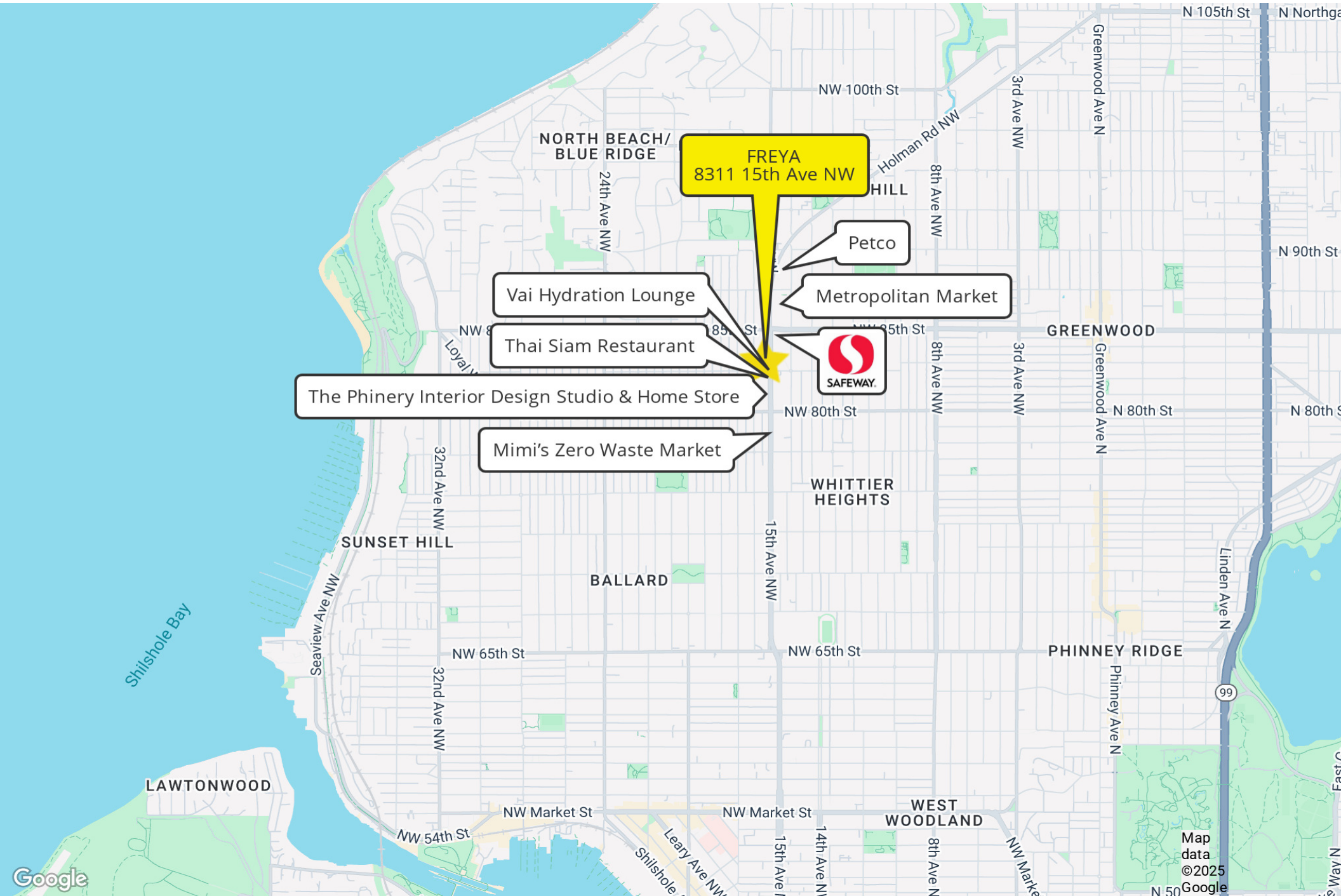
8309 15TH AVENUE NW, SEATTLE, WA 98117

FREYA





FREYA



FREYA
8311 15th Ave NW

Vai Hydration Lounge

Thai Siam Restaurant

The Phinery Interior Design Studio & Home Store

Mimi's Zero Waste Market

Petco

Metropolitan Market

