

**SHERMAN COUNTY  
SURVEYOR'S OFFICE**

C.S. # 343,  
Survey No. 2017-212  
Filed December 26, 2017 10:09 pm  
By Benjamin B. Beseda

PLOT DATE: 12/19/2017

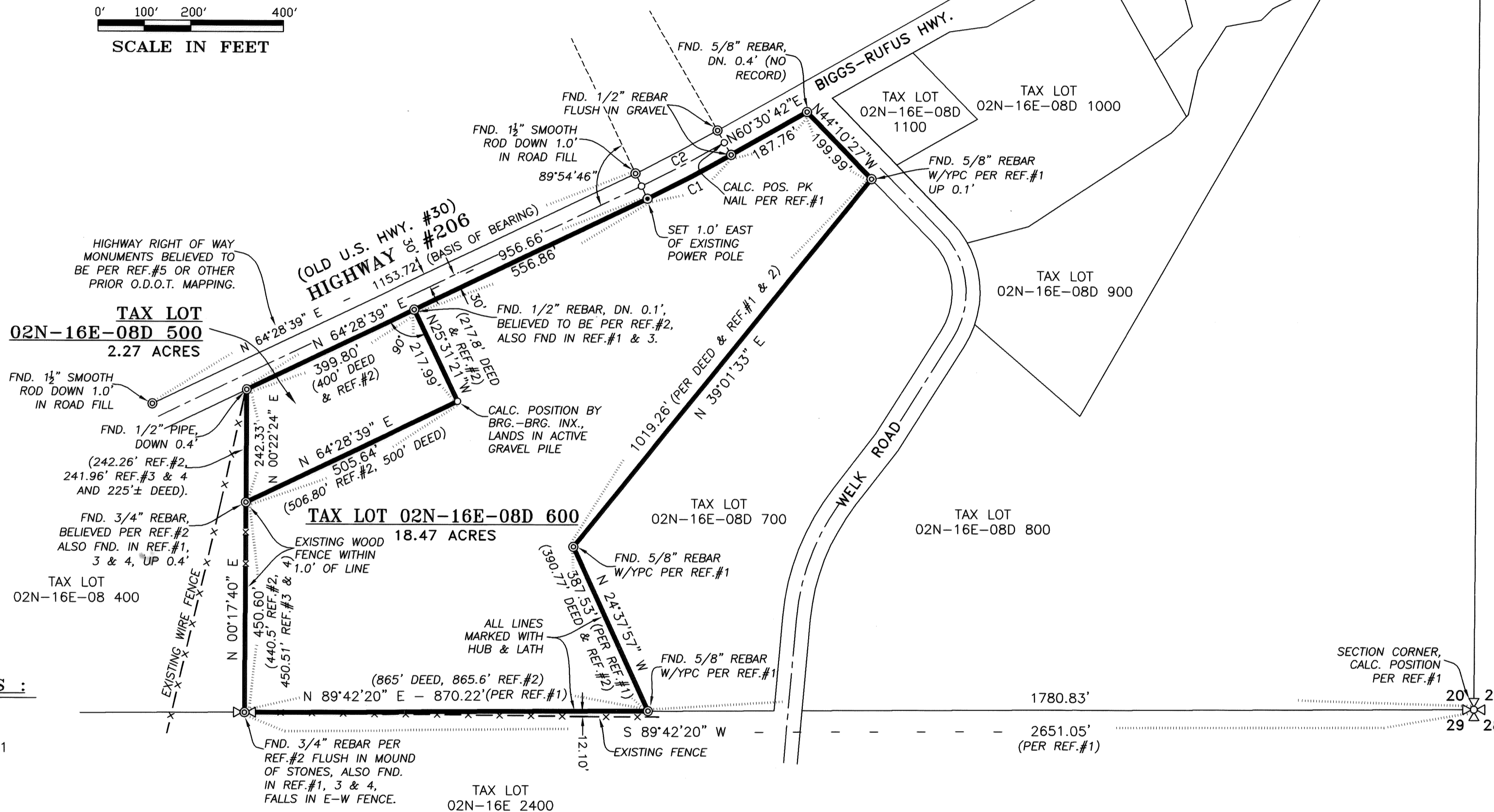
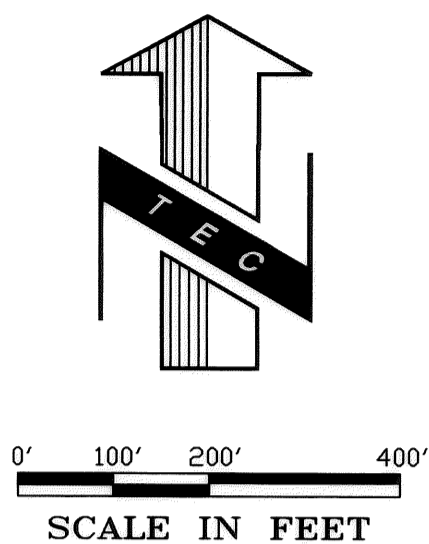
**LEGEND:**

- ⊙ SET 5/8" X 30" REBAR WITH YELLOW PLASTIC CAP, "B BESEDA PLS 50800"
- ⊙ FOUND MONUMENTS, AS NOTED.
- CALCULATED CORNERS, NOT SET.
- SET HUB & LATH
- SET P.K. NAIL OR AS NOTED.
- ◆ SET BRASS SCREW AND WASHER, INSCRIBED "LS 50800"
- x- EXISTING FENCE LINE.
- REF.# SURVEY REFERENCE NUMBER
- FND. FOUND
- CALC. CALCULATED
- ( ) RECORD SURVEY OR DEED CALL
- MON. MONUMENT
- C.S.# COUNTY SURVEY NUMBER
- (E) EXISTING
- R.R. RAILROAD
- R/W RIGHT OF WAY
- DOC. DOCUMENT
- ALUM. ALUMINUM
- APPROX. APPROXIMATE
- P.P. PARTITION PLAT
- L.C. LAND CORNER

CURVE	DELTA ANGLE	RADIUS	ARC LENGTH	TANGENT	CHORD BEARING	CHORD LENGTH
C1	04°01'59"	2894.79'	203.76'	101.92'	N 62°22'27" E	203.72'
C2	04°02'00"	2864.79'	201.67'	100.87'	N 62°22'24" E	201.63'

**NOTES:**

- BEARINGS ARE OREGON COORDINATE SYSTEM NORTH ZONE GRID ESTABLISHED BY G.P.S. OBSERVATION BETWEEN MONUMENTS FOUND ON THE NORTH RIGHT OF WAY LINE OF HIGHWAY #206 AS SHOWN.
- MONUMENTS SHOWN HEREON WERE RECOVERED OR SET ON DECEMBER 13, 2017.
- HUB AND LATH SET INTERMITTENTLY ON PROPERTY LINES PER CLIENT'S INSTRUCTION.
- THE SUBJECT PROPERTIES ARE SURVEYED AS DESCRIBED IN MEMORANDUM OF CONTRACT BETWEEN TSUBOTA AND BIGGS LAND, LLC, RECORDED NOVEMBER 20, 2017 AT DOCUMENT 2017-0430, RECORDS OF SHERMAN COUNTY.



**REFERENCES:**

- PARTITION PLAT 2002-02 FOR ISAMI TSUBOTA BY TENNESON ENGR. CORP. WO#10211 RECORDED JANUARY 31, 2002 FILE No. 020058 C.S. #177
- SURVEYS OF TRACTS OF LAND IN THE SE1/4, SECTION 8 BY TENNESON ENGR. CORP. WO#2868 JANUARY 31, 1964 WITH REV. THROUGH JUNE 26, 1981, TENNESON ARCHIVES
- SURVEY FOR TREVOR BEERS BY TERRA SURVEYING FILED SEPTEMBER 20, 2010 C.S. #289
- PARTITION PLAT 2011-01 FOR PATRICK BEERS BY TERRA SURVEYING RECORDED JANUARY 21, 2011 FILE No. 110024 C.S. #292
- OREGON STATE HIGHWAY DEPT. DESCHUTES RIVER-JOHN DAY SECTION COLUMBIA RIVER HIGHWAY MAY, 1956 WITH REV. TO AUGUST, 2005 DRG. No. 8B-1-23

**NARRATIVE:**

THE PURPOSE OF THIS SURVEY WAS TO ESTABLISH AND MONUMENT THE EXTERIOR BOUNDARY OF TAX LOTS 02N-16E-08D 500 AND 600. THE SUBJECT PROPERTIES LIE IN THE SOUTHEAST 1/4 OF SECTION 8, TOWNSHIP 2 NORTH, RANGE 16 EAST, W.M., IN THE COMMUNITY OF BIGGS. PRIOR TO COMPLETING THE FIELD WORK AND MAPPING NECESSARY FOR THIS SURVEY, RESEARCH WAS MADE TO OBTAIN COPIES OF THE CURRENT DEEDS FOR THE SUBJECT AND ADJOINING PROPERTIES AND TO OBTAIN COPIES OF PRIOR SURVEYS OR PLATS COMPLETED ON OR IN THE VICINITY OF THE SUBJECT PROPERTY. PRIOR SURVEYS UTILIZED AS A PART OF THE RESOLUTION SHOWN HEREON ARE LISTED AS REFERENCES. REFERENCE #2 HAD ESTABLISHED THE MAJORITY OF THE BOUNDARY OF THE SUBJECT PROPERTIES. REFERENCE #1 RE-ESTABLISHED THE EASTERN BOUNDARY OF TAX LOT 600. REFERENCES #3 AND #4 HAD FOUND AND HELD THE REFERENCE #2 MONUMENTS ON THE WEST LINE OF THE PROPERTIES.

IN THE FIELD FOR THIS SURVEY, MONUMENTS WERE RECOVERED PER THE REFERENCE SURVEYS AS SHOWN. THESE MONUMENTS WERE ALL FOUND TO CLOSELY MATCH RECORD DIMENSION AND WERE HELD AS FOUND. THE HIGHWAY 206 RIGHT-OF-WAY WAS ESTABLISHED UTILIZING RECORD CURVE DATA FROM THE MONUMENTS FOUND ON THE NORTHERLY RIGHT-OF-WAY LINE. THE CURVE DATA BEST FIT THE FOUND MONUMENTS UTILIZING A NON-TANGENT CURVE AS SHOWN ON THE SURVEY. THE INTERIOR LINE BETWEEN TAX LOTS 500 AND 600 WAS CALCULATED BY BEARING-BEARING INTERSECTION. THE SOUTHEASTERN CORNER OF TAX LOT 500 WAS NOT MONUMENTED. THIS LOCATION FELL WITHIN AN ACTIVE GRAVEL STOCKPILE AREA. THIS COMPLETED THE RESOLUTION OF THE BOUNDARY OF THE SUBJECT PROPERTIES. THE ONLY NEW MONUMENT SET WAS ON THE ODOT RIGHT-OF-WAY AS SHOWN. ADDITIONALLY, PER LANDOWNER'S REQUEST, LINES WERE MARKED INTERVISIBLY WITH HUB AND LATH.

SET MONUMENT IS 5/8" X 30" REBAR WITH YELLOW PLASTIC CAP INSCRIBED "B BESEDA PLS 50800".

12/19/17  
**REGISTERED  
PROFESSIONAL  
LAND SURVEYOR**

**OREGON**  
JULY 13, 1999  
BENJAMIN B. BESEDA  
50800

EXPIRES: 12/31/2017

Date	No.	Revisions	By	App.
<b>SURVEY FOR BIGGS LAND, LLC.</b>				
TAX LOTS 02N-16E-08D 500 & 600 IN THE SE1/4, SECTION 8, TWP.2 N., RANGE 16 E. W.M. BIGGS JUNCTION SHERMAN COUNTY, OREGON				
<b>TENNESON ENGINEERING CORP.</b> CONSULTING ENGINEERS 3775 CRATES WAY THE DALLES, OREGON 97058 PH. 541-296-9177 FAX 541-296-6657				
Survey	Calculation	Design	Date	Scale
B.R.H.	B.B.B.	BBB	12/19/2017	1"=200'
Drawn	Drawing Number	Work Order No.	Sheet	
S.D.H.	15210	15210	1 of 1	

C.S. #343