

FOR LEASE

11,528 SF AVAILABLE
2202 113th Street, Suite 112-114, Grand Prairie, TX
Upper GSW Submarket

**LEE &
ASSOCIATES**
COMMERCIAL REAL ESTATE SERVICES



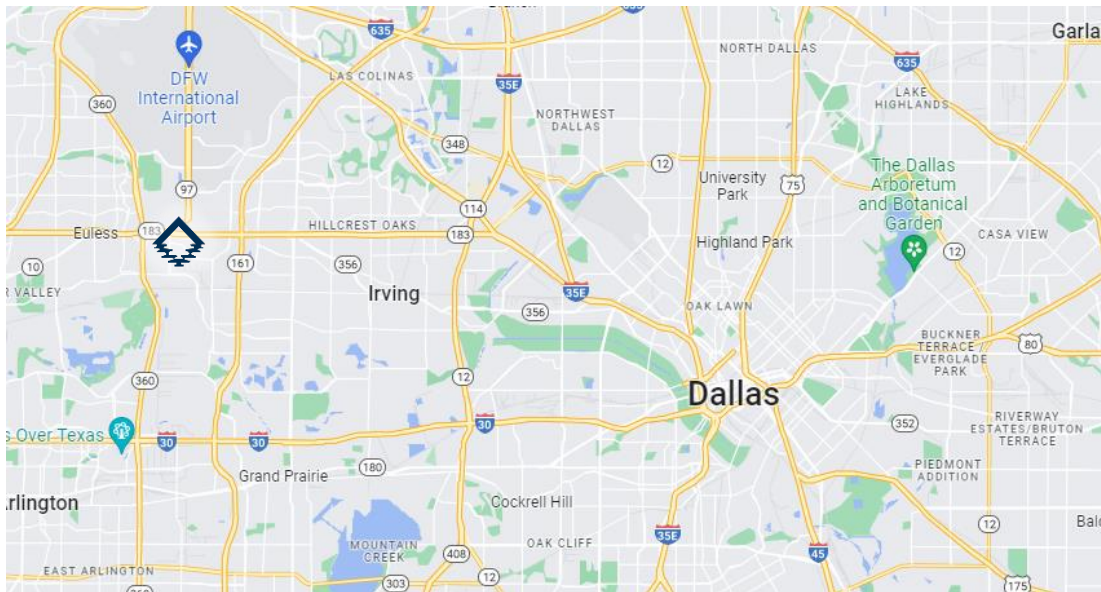
FOR LEASE

11,528 SF AVAILABLE
2202 113th Street, Suite 112-114, Grand Prairie, TX
Upper GSW Submarket



SPACE FOR LEASE - INFORMATION

- 11,528 SF Available
- 18'-9" Clear Height
- 110' Building Depth
- 75' Truck Court Depth
- Year Built: 1985
- 4 Dock High Doors
- 1 Drive In Door
- Front Park | Rear Load
- BUR Roof
- Ample employee parking
- 240 - volts, 3 - phase



MARKETED BY:

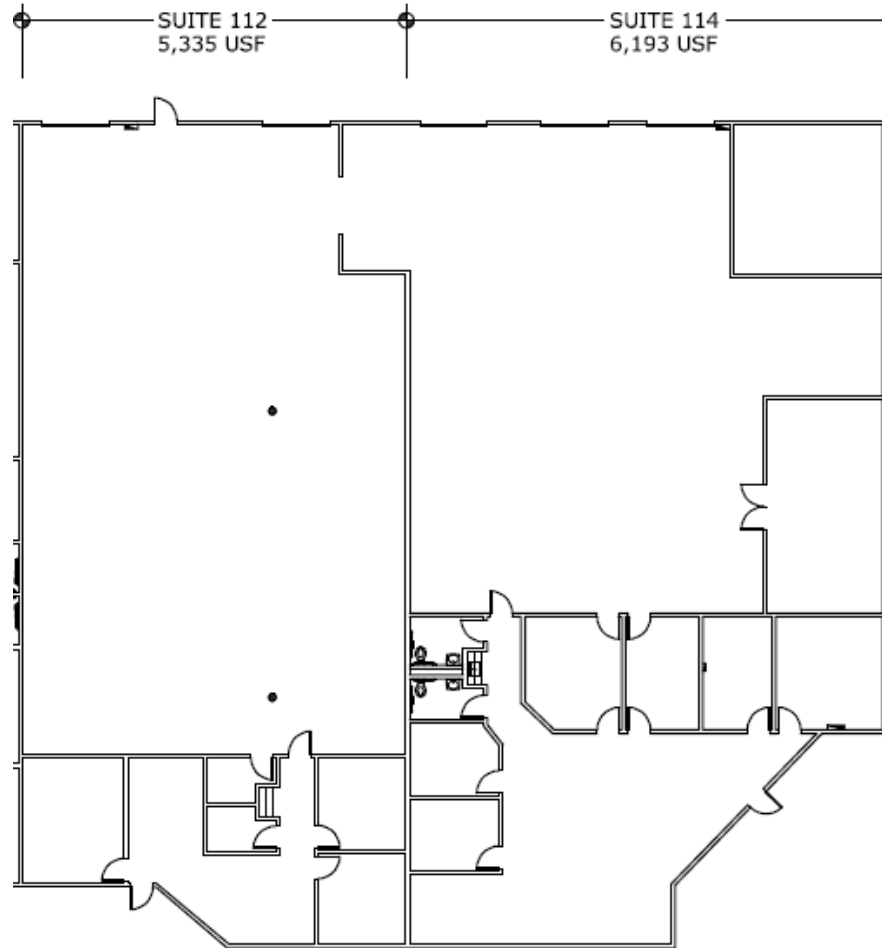
JOHNNY ANDERSON

JANDERSON@LEE-ASSOCIATES.COM
512-897-6000



FOR LEASE

11,528 SF AVAILABLE
2202 113th Street, Suite 112-114, Grand Prairie, TX
Upper GSW Submarket



FOR LEASE

11,528 SF AVAILABLE
2202 113th Street, Suite 112-114, Grand Prairie, TX
Upper GSW Submarket

**LEE &
ASSOCIATES**
COMMERCIAL REAL ESTATE SERVICES

