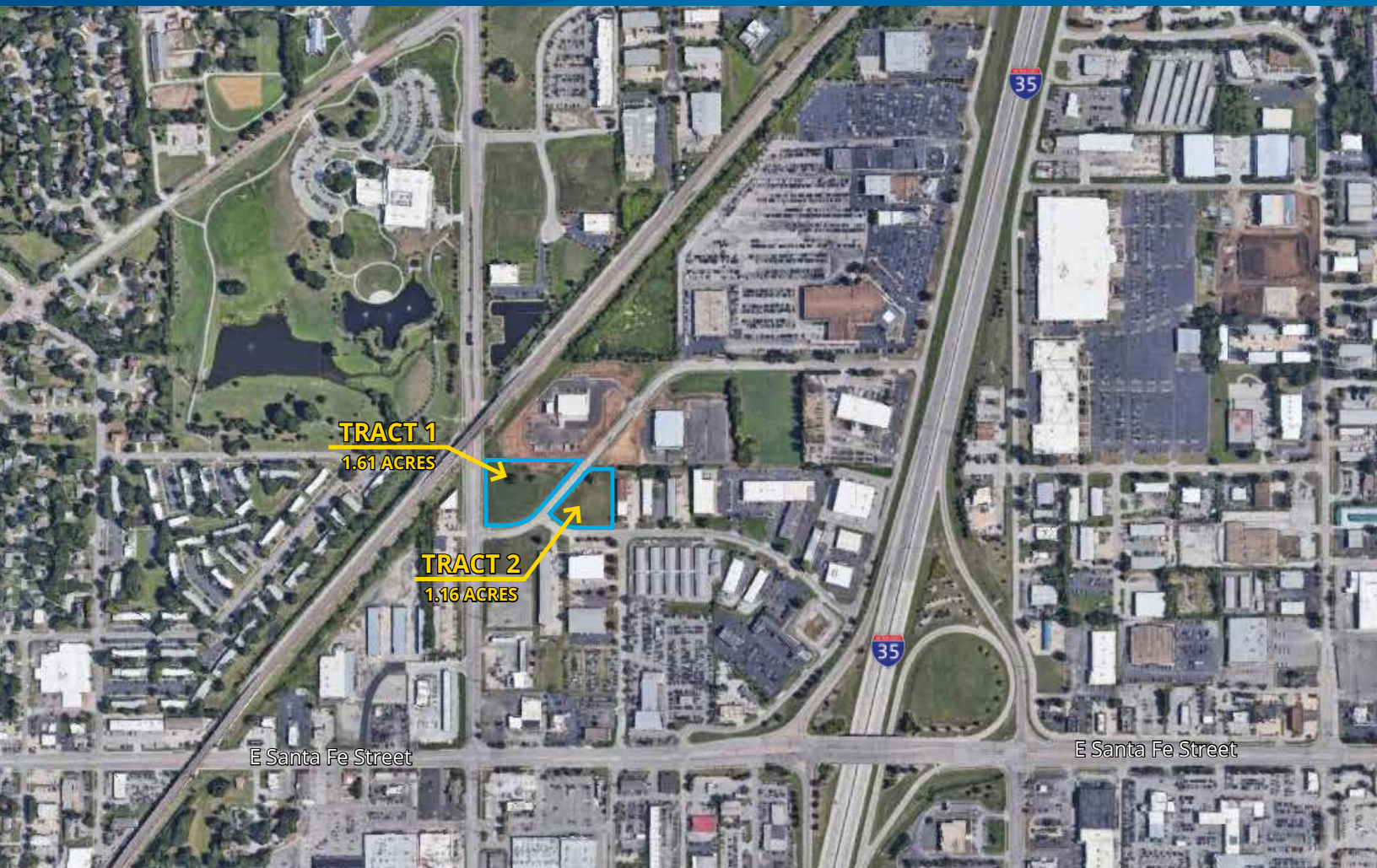


LAND FOR SALE OR BUILD-TO-SUIT

Spruce Industrial Park



RIDGEVIEW ROAD & SPRUCE STREET, OLATHE, KS



Property Features

- › Total site: 2.76 acres
 - › Tract 1: 1.61 acres
 - › Tract 2: 1.16 acres
- › Infill Johnson County location
- › Easy interstate access to I-35 at Santa Fe Street
- › All utilities to site
- › Zoning: MP-2
- › No business park special assessments
- › Sale price: \$4.50 per square footage of land
- › Call for build-to-suit pricing

JOHN STAFFORD sior
+1 816 556 1184
KANSAS CITY, MO
john.stafford@colliers.com

ED ELDER sior
+1 816 556 1135
KANSAS CITY, MO
ed.elder@colliers.com

COLLIERS INTERNATIONAL
4520 Main Street, Suite 1000
Kansas City, MO 64111
www.colliers.com

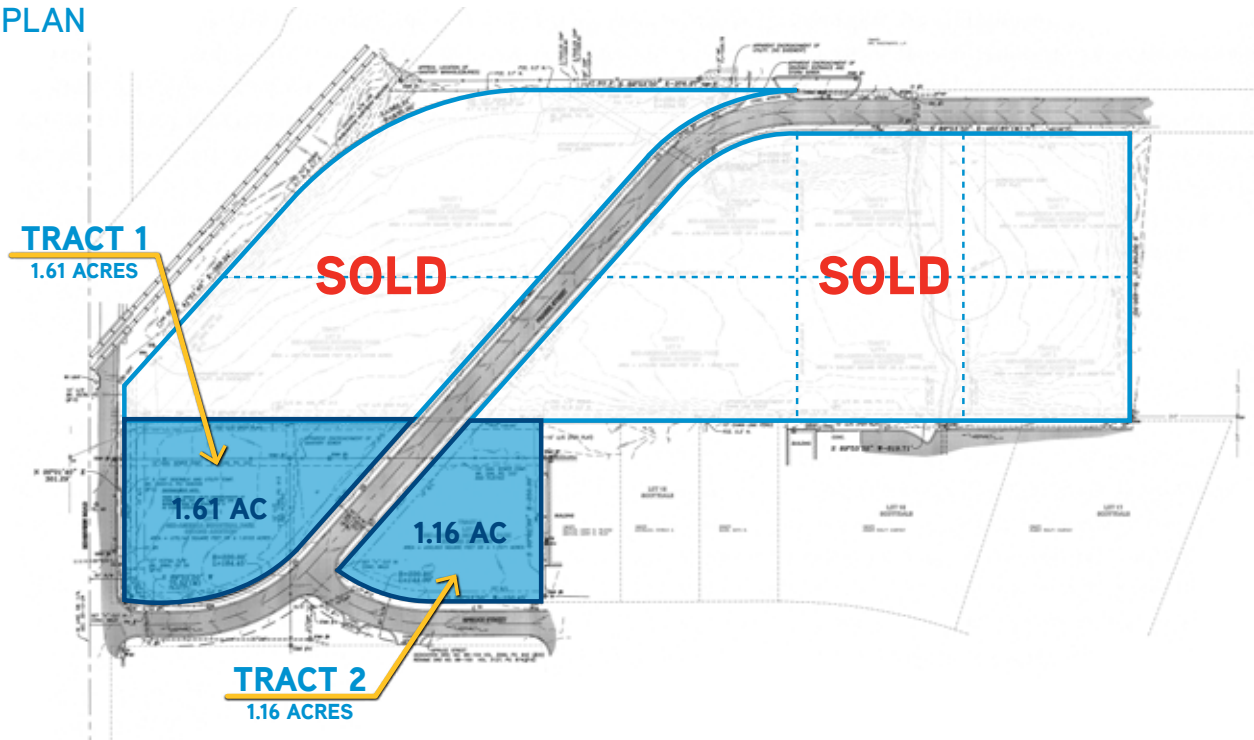
LAND FOR SALE OR BUILD-TO-SUIT

Spruce Industrial Park



RIDGEVIEW ROAD & SPRUCE STREET, OLATHE, KS

SITE PLAN



RENDERINGS



JOHN STAFFORD SIOR
+1 816 556 1184
KANSAS CITY, MO
john.stafford@colliers.com

ED ELDER SIOR
+1 816 556 1135
KANSAS CITY, MO
ed.elder@colliers.com

COLLIERS INTERNATIONAL
4520 Main Street, Suite 1000
Kansas City, MO 64111
www.colliers.com