



For Lease

1524 11th Avenue N
Nampa, ID 83687

Pete Kuzmenko
208-559-2767

Available July 1

Property Overview

Property Type	Industrial Flex
Total Building Size	7,968 SF <i>(see below for breakdown)</i>
Land Size	.67 Acre
Zoning	IL
Year Built	2021
Construction Type	Metal
Ceiling Height	18 Ft Clear Height
Grade Level Drive-In Doors	2 - 12x14 Doors
Power	3 Phase 400 amps

Space Available

Suite	Size
Warehouse	6,460 SF
Office	895 SF
Mezzanine	895 SF

NNN Rent Month **\$8,600.00**

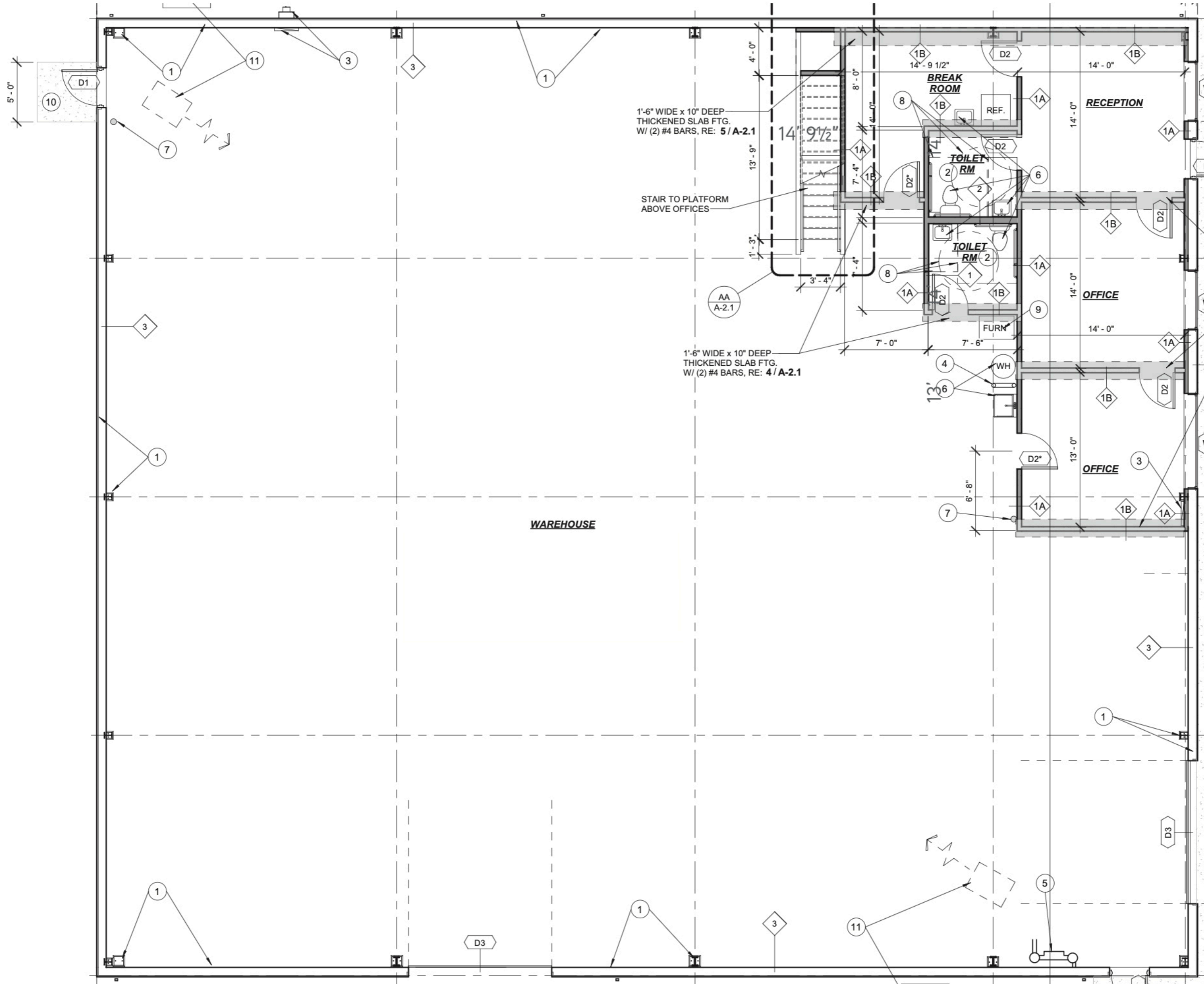
NNN fees **± \$.19 PSF**



Key Highlights

- Close to Idaho Center
- Great parking available
- Garrity/I-84 Interchange within 1 mile
- Paved yard area behind building
- 2 Grade Level drive in doors
- 2 Restrooms
- Fully sprinkled

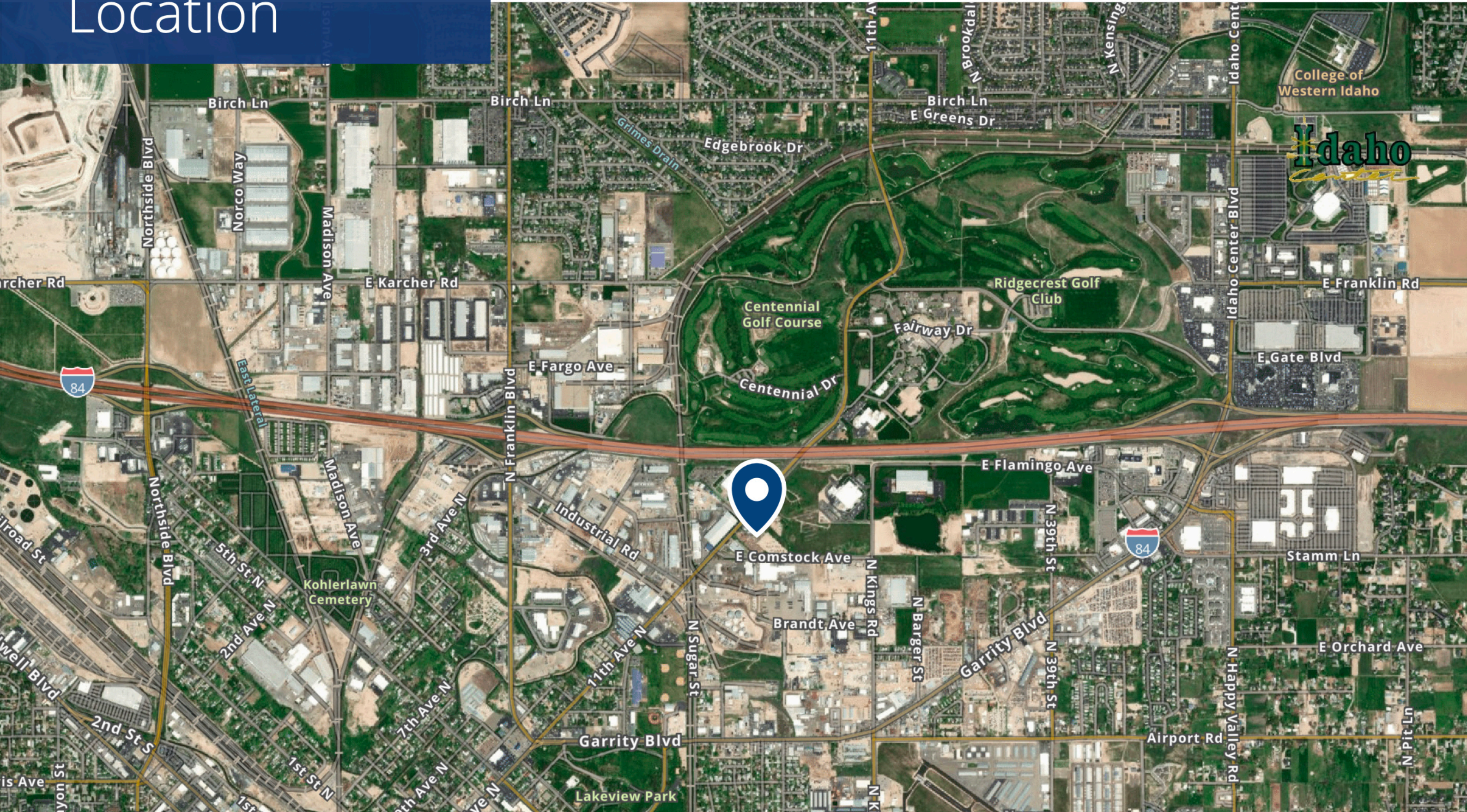
Floor Plans



Location

 Google Map

 Street View



**1524 11th Avenue N
Nampa, ID 83687**