



SPERRY

COMMERCIAL REALTY ASSOCIATES

**THE MALL AT
FISHERVILLE
108 FISHERVILLE ROAD,
CONCORD, NH**

**RETAIL SPACE FOR
LEASE**



ALEX BERUBE
ASSOCIATE
603-856-4445



JOSHUA SOLLOWAY
ASSOCIATE
603-289-1405



JESSE HEPLER
SENIOR ASSOCIATE
603-785-2246



www.TheCREassociates.com | 603.262.3555 | 169 South River Road Suite 1 Bedford, NH



DESCRIPTION

Built in 1989, The Mall at Fisherville is a prominent neighborhood shopping destination located at 108 Fisherville Road in Concord, NH. Strategically positioned along Route 3, the center serves the rapidly growing North Concord market and surrounding communities.

The property features a strong mix of national and local tenants that draw consistent daily traffic from both residents and commuters. With excellent visibility, a signalized entrance, and abundant parking, The Mall at Fisherville offers a convenient and attractive retail environment for shoppers and businesses alike. Its established tenant base and clean façade make it a proven, reliable retail hub within the Concord area.

HIGHLIGHTS

Building Size: ±25,665 SF on ±5.24 acres

Available Spaces: 1,634 SF - 9,000 SF

(Space A - 4,074 to 9,000sf; Space B - 3,095sf to 9000sf; Space C - 1,634sf to 9,000sf.)

Rent: \$12.00-\$17.00 NNN




Tenants Include: H&R Block, Constantly Pizza, Szechuan Garden (since 1989), Fisherville Animal Hospital, and others

Traffic Count: ±11,400 vehicles per day along Fisherville Rd (US Route 3)

Accessibility: Signalized entrance, multiple curb cuts, and generous surface parking

Zoning: General Commercial (allows a variety of retail, service, and office uses)

Location Advantage: Serves a dense residential population with limited competing retail nearby

		
<p>Population 1 Mile: 5,988 3 Miles: 18,063 5 Miles: 39,158</p> <p>Daytime Population 1 Mile: 1,159 3 Miles: 5,736 5 Miles: 33,411</p>	<p>Median Household Income 1 Mile: \$85,031 3 Miles: \$91,098 5 Miles: \$81,339</p>	<p>Median Age 1 Mile: 41.6 3 Miles: 42.1 5 Miles: 42.4</p>

INTERIOR PHOTOS



RETAIL FOR LEASE | The Mall at Fishersville

EXTERIOR PHOTOS



RETAIL FOR LEASE | The Mall at Fishersville

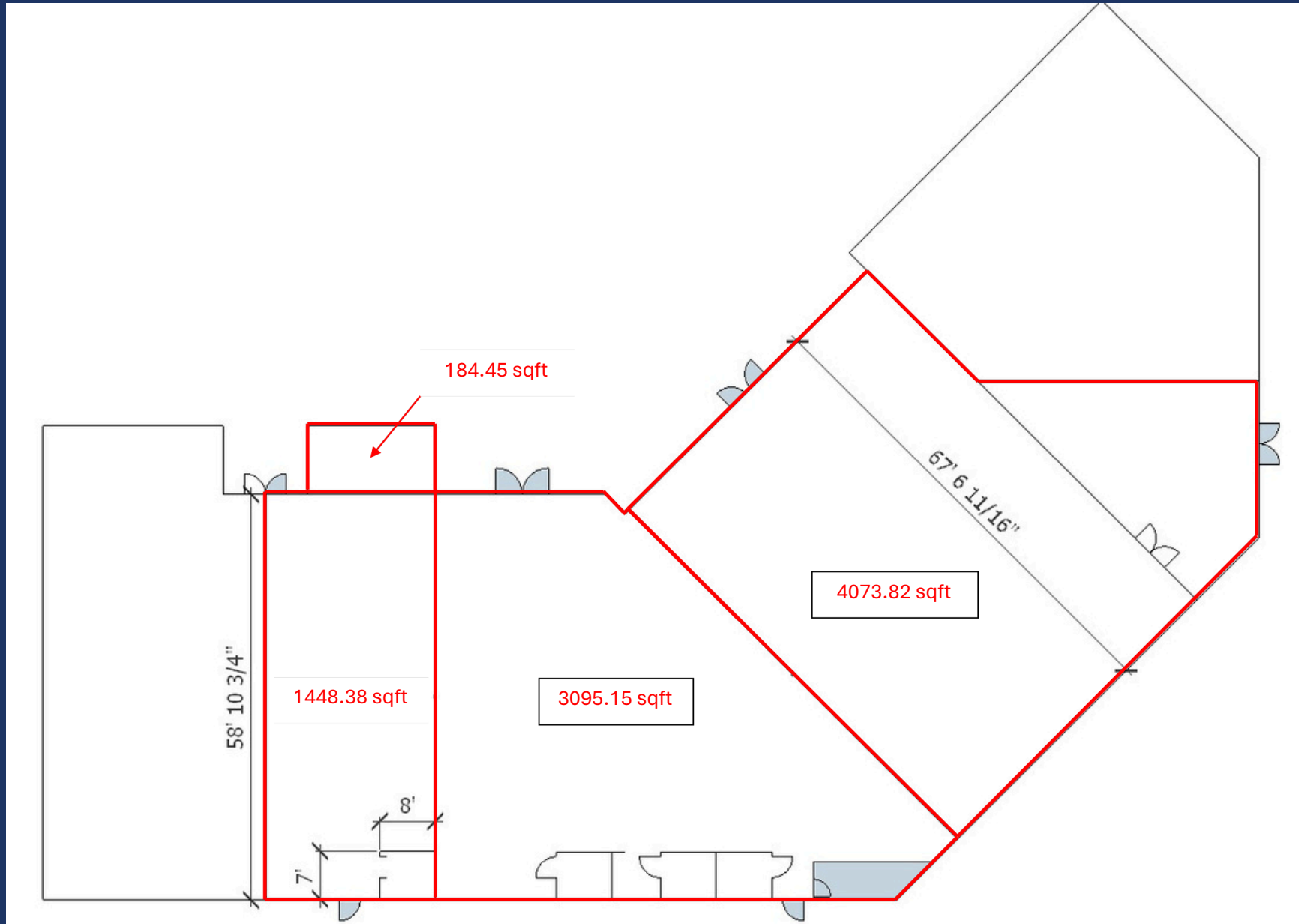
LEASING PLAN

RETAIL FOR LEASE | The Mall at Fisherville



SAMPLE FLOOR PLAN

RETAIL FOR LEASE | The Mall at Fisherville



RETAIL FOR LEASE | The Mall at Fisherville

AERIAL VIEW

