

1184 Davis Place NW



Religious / Assembly Use Facility - \$1,175,000

- West Midtown / Upper Westside
- 0.60 acre parcel = 26,136 square feet
- 3,435 SF religious / assembly building built in 1989
- Zoned R-4 (Residential), Special Use Permit Required
- 30 parking spaces
- 5 minutes to Chattahoochee Ave - TopGolf, The Works Upper Westside, Chattahoochee Food Works.
- 12 minutes to Atlantic Station, Midtown, Georgia Tech
- Convenient to Buckhead, Midtown, Downtown
- Potential for redevelopment into personal fitness facility, event venue, training / education facility, co-working space OR single family residential.

Keith Sharp
kw BUCKHEAD

Keller Williams Buckhead
3650 Habersham Road NW
Atlanta, Georgia 30305

Keith Sharp
Cell - 678.778.8774
Office - 404-604-3897

1184 Davis Place NW



Large reception, waiting area with restrooms.



39' x 36' assembly hall with elevated dais.



39' x 36' assembly hall.



15' x 21' Social Hall with Exterior Entry.



Davis Place - 87' frontage on Davis Place.



Defoor Ave - 98' frontage on Defoor Ave.

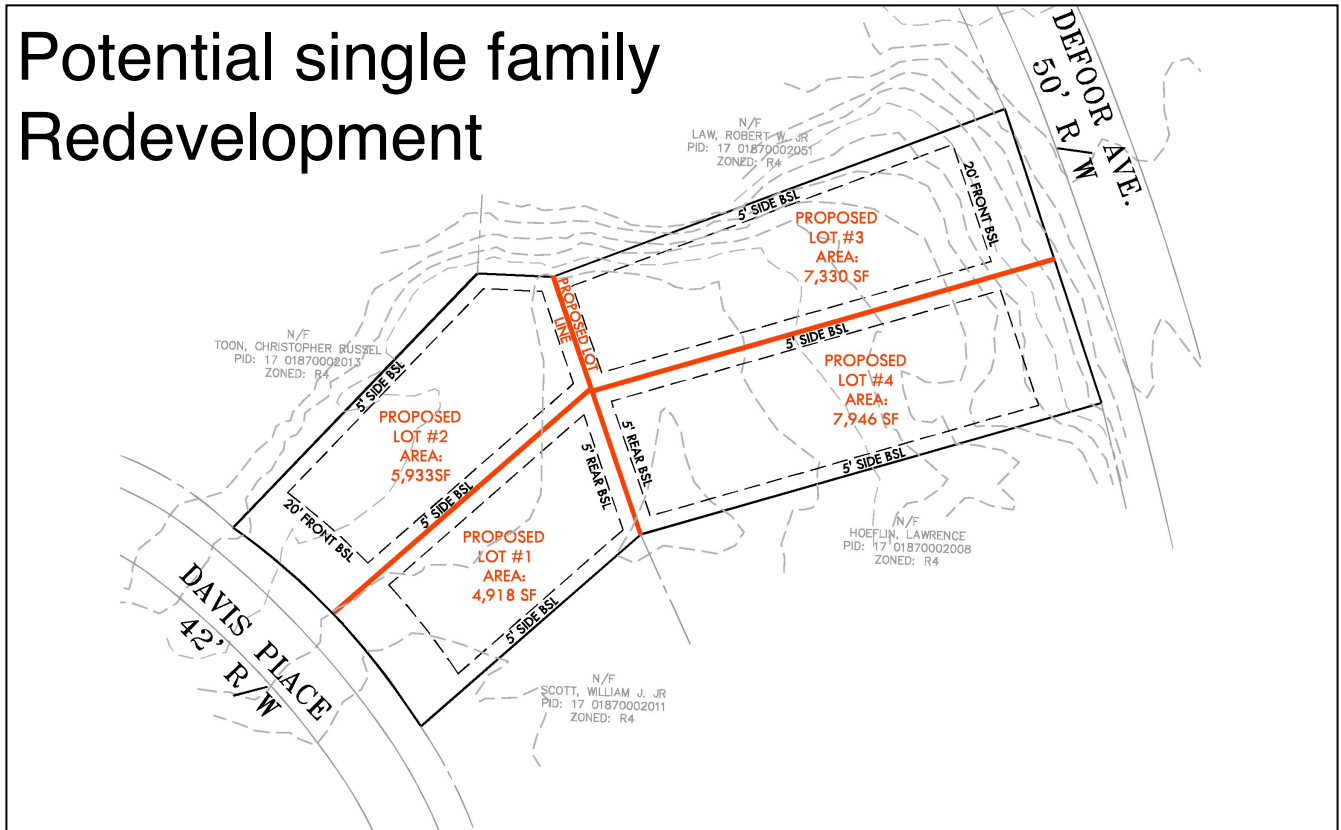
Keith Sharp
kw BUCKHEAD

Keller Williams Buckhead
3650 Habersham Road NW
Atlanta, Georgia 30305

Keith Sharp
Cell - 678.778.8774
Office - 404-604-3897

1184 Davis Place NW

Potential single family Redevelopment

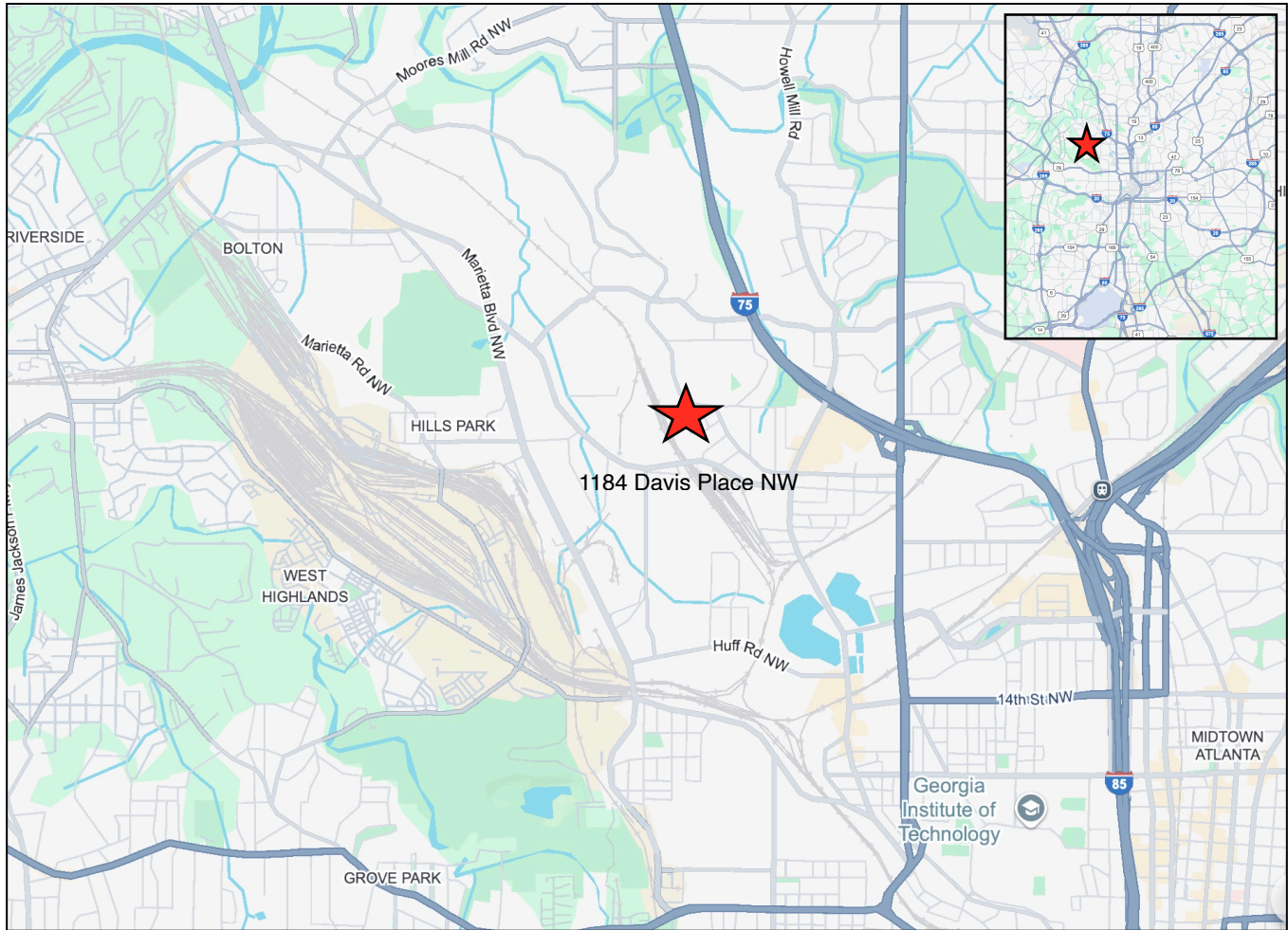


Keith Sharp
kw BUCKHEAD

Keller Williams Buckhead
3650 Habersham Road NW
Atlanta, Georgia 30305

Keith Sharp
Cell - 678.778.8774
Office - 404-604-3897

1184 Davis Place NW



Located in the highly sought-after Underwood Hills neighborhood of Atlanta, 1184 Davis Place NW presents a rare and versatile 0.60-acre offering in one of the city's most dynamic and rapidly evolving corridors. Positioned with road frontage on Davis Place and Defoor Avenue, the West Midtown / Upper Westside property is minutes from Buckhead, Midtown and Downtown, with exceptional access to I-75 and close proximity to the Atlanta Beltline.

The site features a well-maintained $\pm 3,435$ square foot free-standing building constructed in 1989, currently utilized for religious/assembly use. With 30 parking spaces and an excellent parking ratio of 8.7 spaces per 1,000 square feet, the property is well-equipped to support a variety of operational needs.

5 minutes to Chattahoochee Ave - TopGolf, The Works Upper Westside, Chattahoochee Food Works.
12 minutes to Atlantic Station, Midtown, Georgia Tech. 20 minutes to Downtown or Buckhead.

Keith Sharp
kw BUCKHEAD

Keller Williams Buckhead
3650 Habersham Road NW
Atlanta, Georgia 30305

Keith Sharp
Cell - 678.778.8774
Office - 404-604-3897