

FOR LEASE: 5635 Riggins Ct #13



**For Lease 5635 Unit #13**

**Available 4/1/2026**



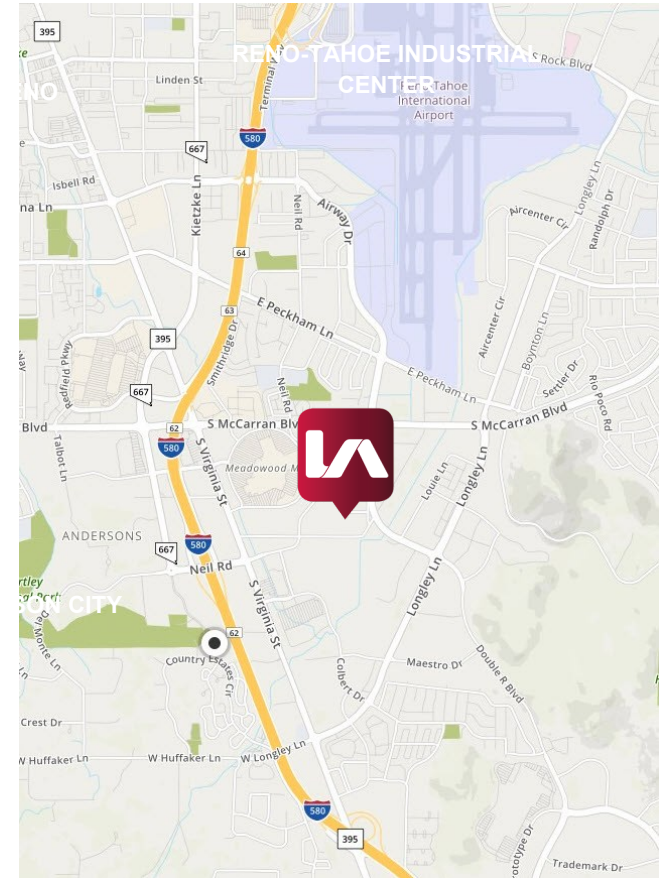
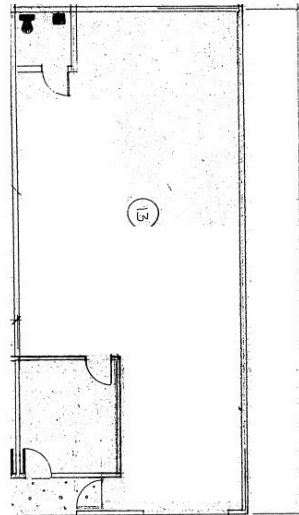
Lyle Chamberlain, SIOR, CCIM  
Lee & Associates Reno-President  
lchamberlain@lee-associates.com  
Lic# B.1000716  
(775) 851-5310

## LISTING DATA

**AVAILABLE SF:** Unit #13 1,634 SF  
**RATE:** \$2,451 Per Mo + NNN (\$0.25 psf)

## PROPERTY DATA

**JURISDICTION:** Reno, NV  
**ZONING:** MU  
**SPACE AVAILABLE:** 1,634  
**DATE AVAILABLE:** 4/1/2026  
**POWER:** 100 AMPS  
**CLEAR HEIGHT:** 16'  
**LOADING:** 10' X 12" OHD  
**HVAC:** Gas Heater in ea Unit,



Lyle Chamberlain, SIOR, CCIM  
Lee & Associates Reno-President  
lchamberlain@lee-associates.com  
Lic# B.1000716  
(775) 851-5310