

# Spring Creek P L A Z A



# TABLE OF CONTENTS

---

PG. **3** ABOUT

PG. **4** TRADE AERIAL

PG. **5** SITE AERIAL

PG. **6** SITE PLAN

PG. **7** CONCEPTUAL EXPANSION  
PLANS

PG. **8-9** PHOTOS

# ABOUT

---

## PROJECT SCOPE

Located in the heart of Oklahoma, just north of Oklahoma City, Edmond offers outstanding hotels, conveniently located attractions, championship golf, and nostalgic shopping areas featuring the unique and antique, all with the added pleasure of beautiful public art on almost every corner. Edmond is also home to the oldest university in Oklahoma, the University of Central Oklahoma, and third largest school district in the state (#1 ranked school district in Oklahoma - Niche.com, 2019).

## DEMOGRAPHICS

	1 mile	2 mile	5 mile
Est. Population	10,032	68,262	129,400
Avg. HH Income	\$111,410	\$112,116	\$128,910
Total Housing Units	4,095	27,456	49,491
Daytime Population	10,364	70,819	124,551
Medium Home Value	\$242,555	\$243,333	\$271,933

## DETAILS

- 63,000 SF in Phase 1 up to 30,000 SF of potential retail space in Phase 2
- Complementary mix of popular national retailers and local businesses
- Voted best Shopping Center in Edmond, 4 years in a row

## TRAFFIC COUNTS

- E 15th St: 16,700 VDP-19
- S Bryant Ave: 19,200 VPD-19

## AREA ATTRACTIONS



2nd & Bryant  
Shopping Center



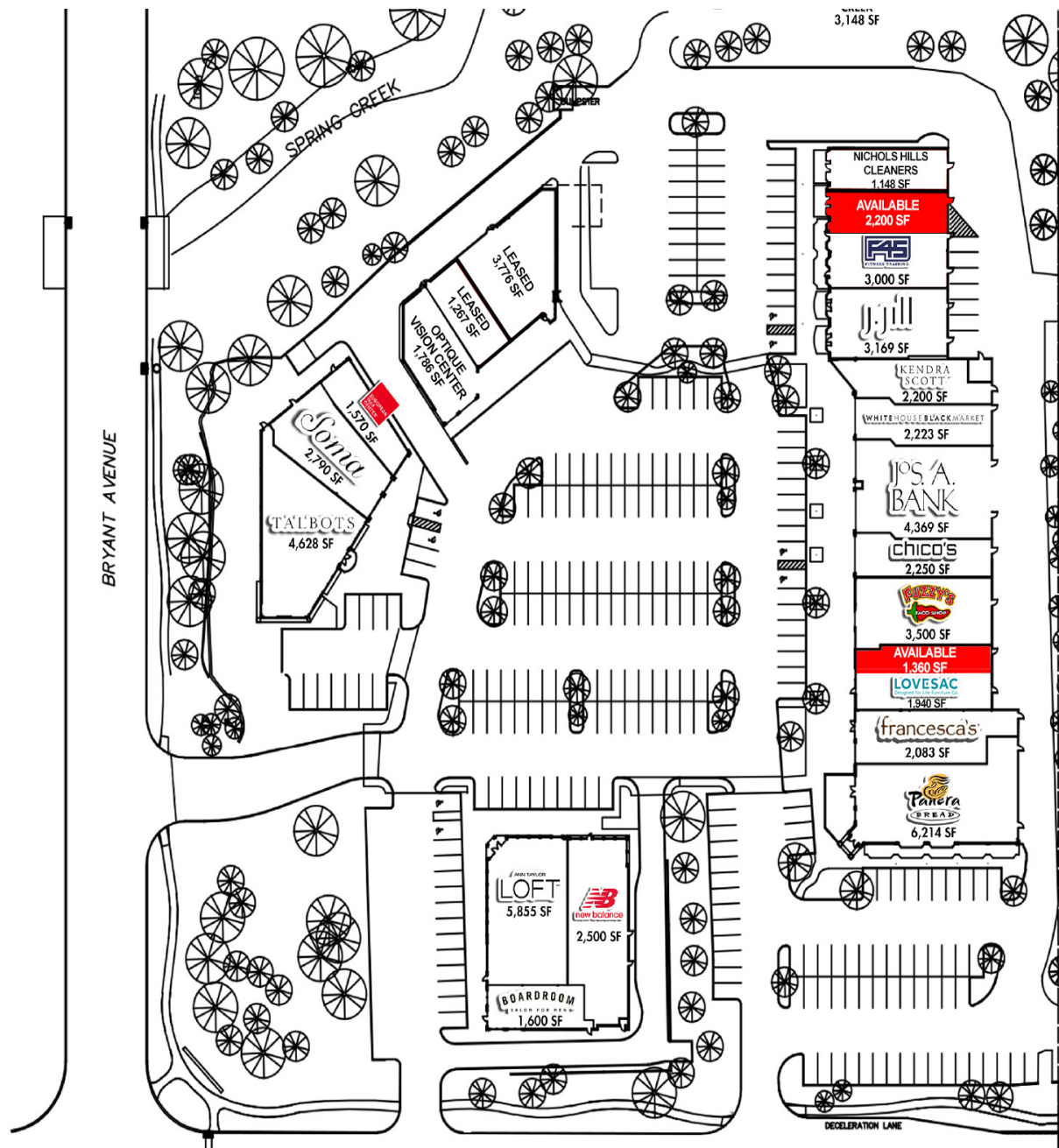
Memorial High School  
Edmond Santa Fe High School



# SITE AERIAL

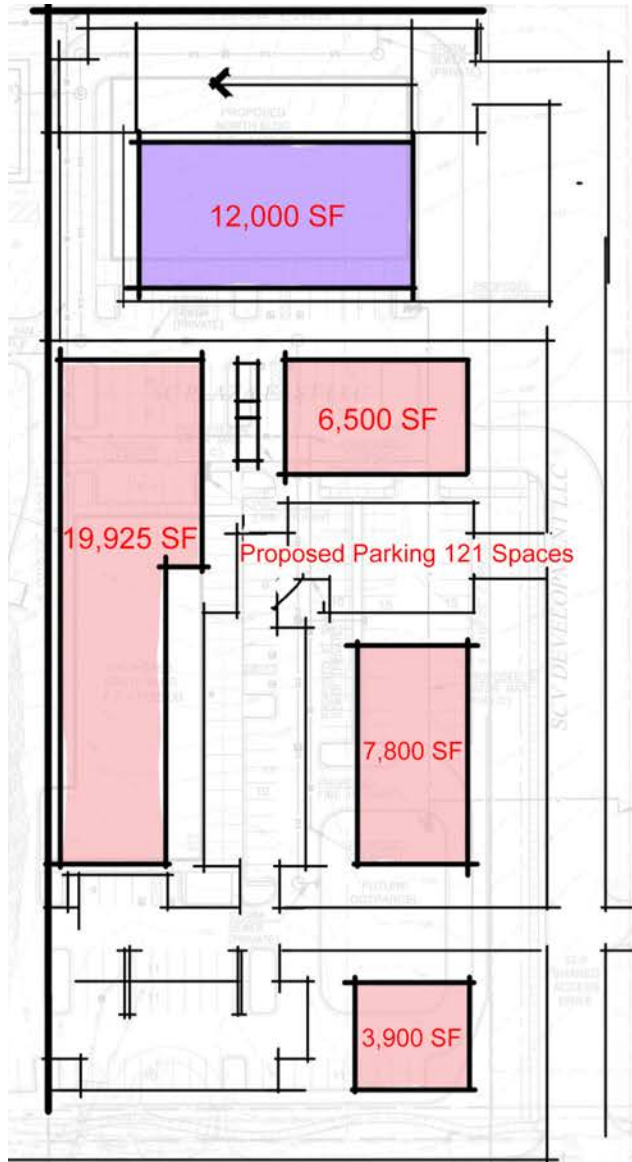


# SITE PLAN

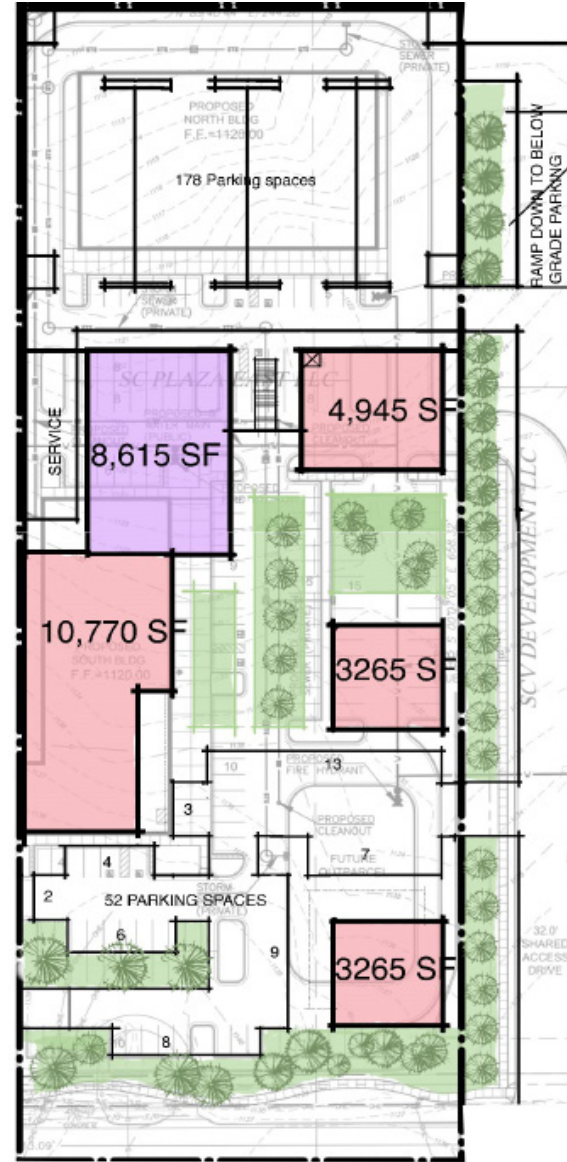


# CONCEPTUAL EXPANSION SITE PLANS

## CONCEPTUAL A



## CONCEPTUAL B



# PHOTOS

---



# PHOTOS

---



SHOP<sup>CO.</sup>

---

*Kendra Roberts*

**KENDRA@SHOPCOMPANIES.COM**

**214-632-3933**

*Jacob Logsdon*

**JACOB@SHOPCOMPANIES.COM**

**405-919-7951**