

VS-180 | RETAIL SUITE | 2,040 SF



CASCADE VILLAGE SHOPPING CENTER



Between Dakota's Brick Shop and Pretty Moments



\$24/SF/Yr. NNN

NB NEVILLE & BUTLER
Commercial Real Estate

Steven Neville, Broker
Natalie Butler, Broker
696 McVey Ave., Ste. 202 | Lake Oswego, OR 97034
503.241.1222 | www.nevillebutler.com

COMPASS COMMERCIAL

Russell Huntamer, CCIM
Eli Harrison, Broker
600 SW Columbia St., Ste. 6100 | Bend, OR 97702
541.383.2444 | www.CompassCommercial.com

REAL ESTATE SERVICES



VS-180 | 2,040 SF | \$24/SF/YR. NNN

Cascade Village Shopping Center is an approximately 367,000 square foot open-air center situated at the gateway to Bend, Oregon. Located at the confluence of Highways 20 and 97 on Bend's north end, the center has exposure to over 67,680 cars per day (ODOT 2023) and recorded 3.5 million visits in 2025, a 5.6% increase year over year and 13.1% over three years, compared to 2.9 million visits at Costco across the street.

SUITE DESCRIPTION

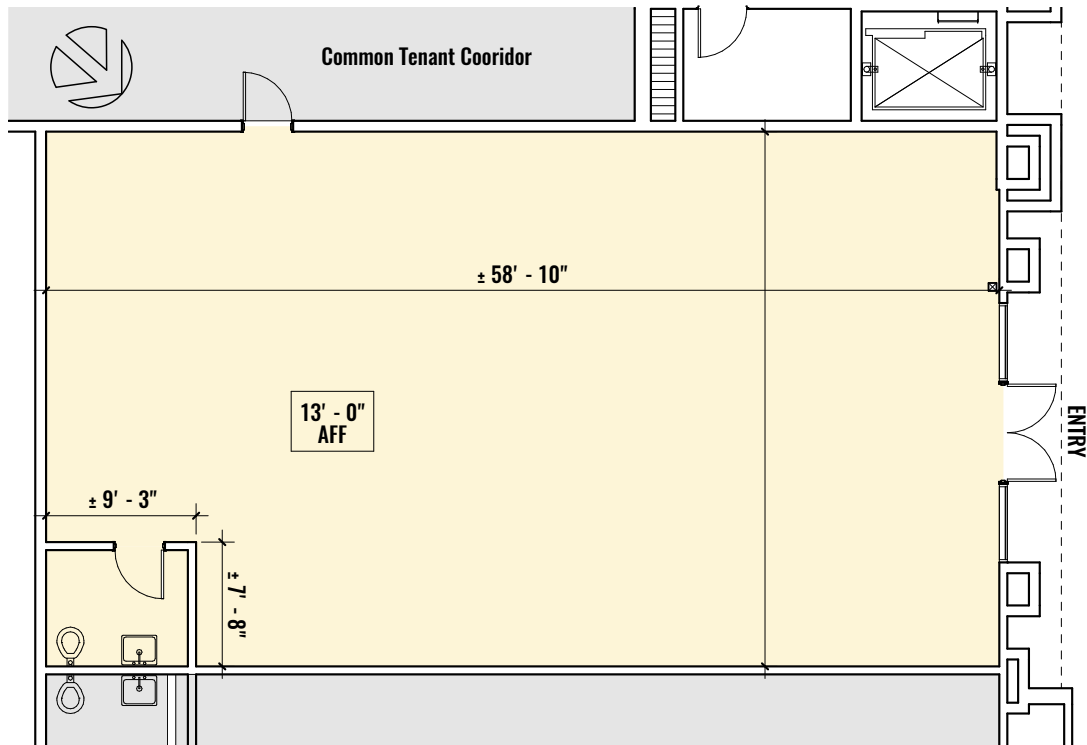
This in-line retail suite is located in the center of the shopping center between Dakota's Brick Shop and Pretty Moments. The space has an open layout and includes a private restroom making it ideal for a variety of retail users.

VILLAGE PLAZA

The nearby Village Plaza is the center's social hub offering a welcoming outdoor seating area and a charming plaza area for families and friends to gather.

SUITE HIGHLIGHTS

- In-line retail space in the heart of Cascade Village
- In-suite restroom
- Located between Dakota's Brick Shop and Pretty Moments
- Angle parking in front space
- 250-Amp electrical service
- TDS high-speed internet and gas services available
- 13' 0" ceiling height above finished floor (AFF)
- NNN's estimated at \$9.86/SF/Yr.
- Marketing fund at \$1.00/SF/Yr.



Brokers are licensed in the state of Oregon. This information has been furnished from sources we deem reliable, but for which we assume no liability. This is an exclusive listing. The information contained herein is given in confidence with the understanding that all negotiations pertaining to this property be handled through Compass Commercial Real Estate Services. All measurements are approximate.

For More Information, Please Contact:

COMPASS COMMERCIAL REAL ESTATE SERVICES

541.383.2444
Russell Huntamer, CCIM
 rh@compasscommercial.com
Eli Harrison, Broker
 eharrison@compasscommercial.com

NB NEVILLE & BUTLER
 Commercial Real Estate

503.241.1222
Steven Neville, Broker
 steve@nevillebutler.com
Natalie Butler, Broker
 natalie@nevillebutler.com