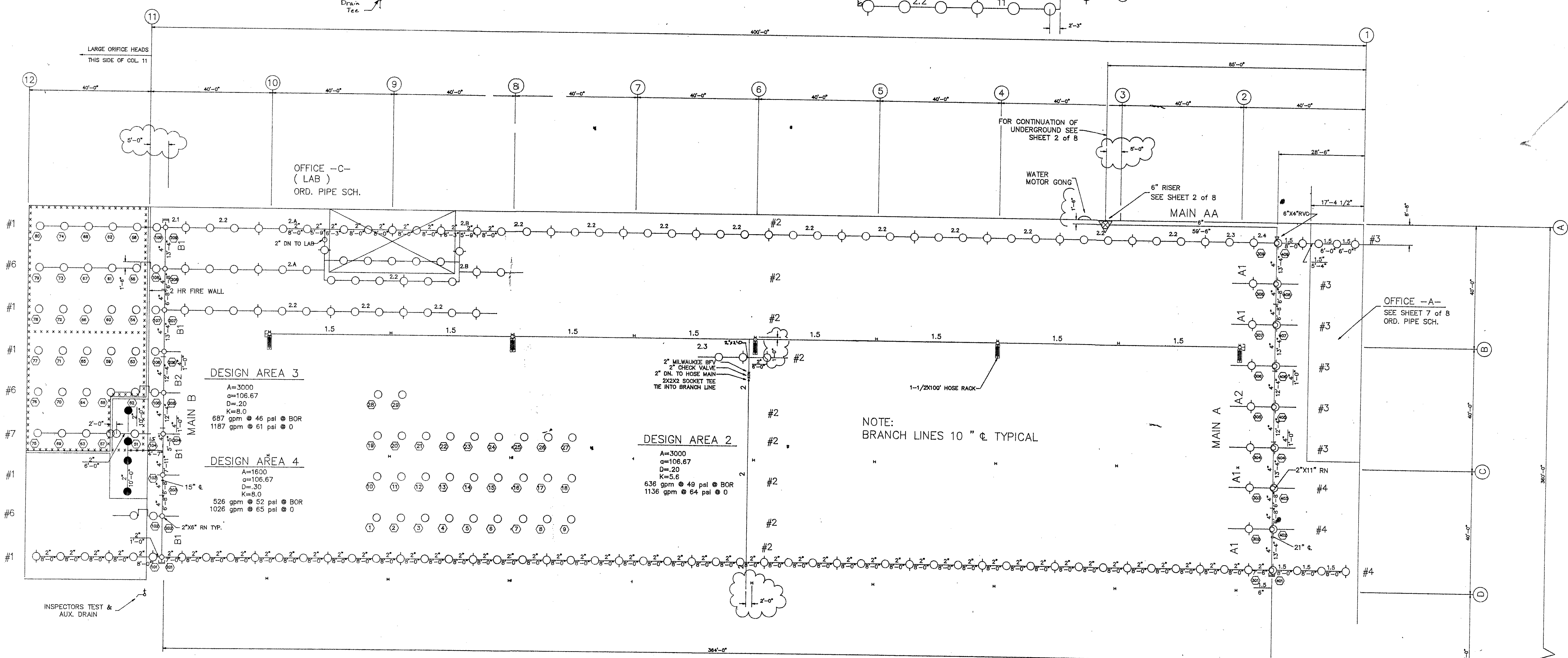
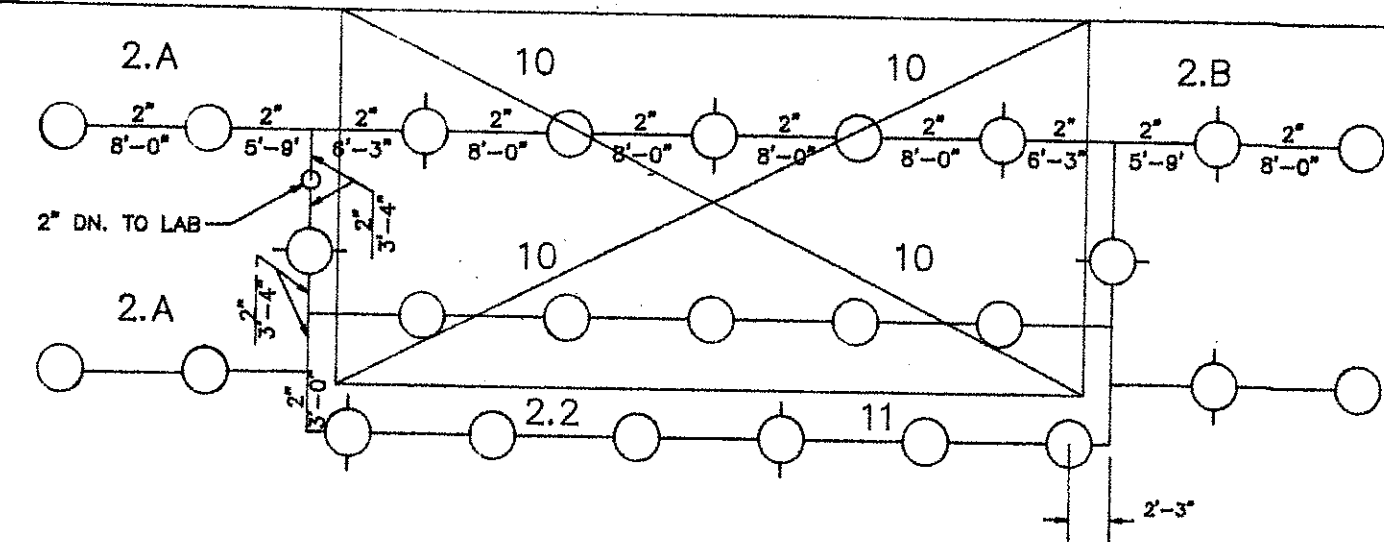
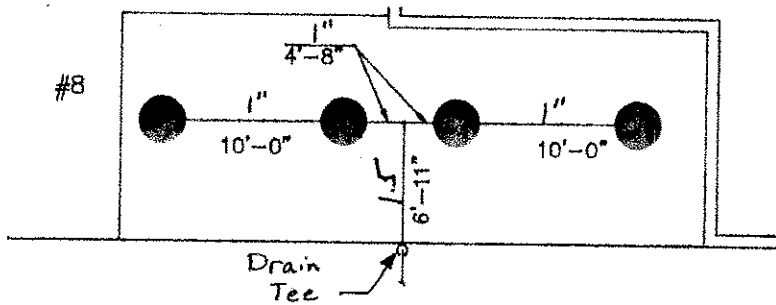


ENLARGED VIEW OF SPRINKLERS ABOVE OFFICE -C- SHOWING CUT DIMENSIONS

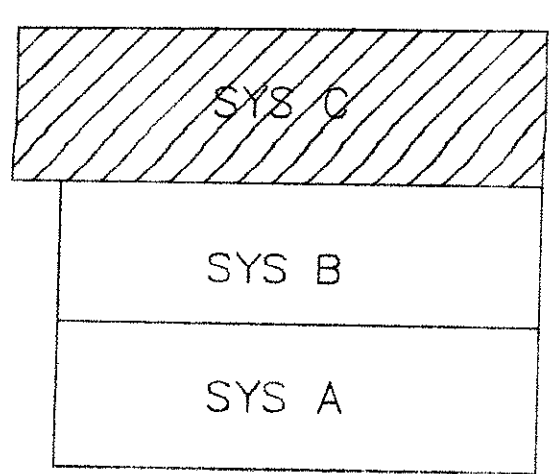


DESIGN AREA 3
A=3000
q=106.67
D=.20
K=8.0
687 gpm @ 46 psi @ BOR
1167 gpm @ 61 psi @ 0

DESIGN AREA 4
A=1600
q=106.67
D=.30
K=8.0
526 gpm @ 52 psi @ BOR
1026 gpm @ 65 psi @ 0

DESIGN AREA 2
A=3000
q=106.67
D=.20
K=5.6
636 gpm @ 49 psi @ BOR
1136 gpm @ 64 psi @ 0

NOTE:
BRANCH LINES 10" C TYPICAL



SYSTEM - C -

MEAD LOSS CONTROL CORPORATION
Approved _____
Not Approved _____
Subject to Comments Dated 6/27/88
By *Richard J. Edalla*

TYPE	SIZE	DEG	NO.
Brass Upright	1/2	165	462
"	3/4	165	46
Chrome Pend.	1/2	165	4
TOTAL SPRKS. THIS SHEET			512
TOTAL SPRKS. THIS JOB			



DANA CORP. BRISTOL VIRGINIA

SYSTEM C

DATE: 6 JUN 88
DRAWN BY: BO&TS
JOB NO.: 88006
SHEET NO.: 6 OF 8