

443 N. CLARK ST.



All information is subject to change without notice.



THIS ONE-OF-A-KIND OFFICE OPPORTUNITY

combines industrial character with modern sophistication, giving your team an environment that inspires and impresses. A dedicated Clark Street entrance with tenant branding creates a bold street-level presence, while a private outdoor terrace offers the perfect setting for team gatherings or client entertainment.

- **Iconic Design:** Soaring ceilings, exposed bow trusses, and original masonry
- **Private Outdoor Terrace:** Perfect for events, breaks, and team collaboration
- **Prominent Tenant Branding:** Dedicated Clark Street entrance with signage opportunities
- **Prime Connectivity:** Steps from myriad forms of public transit and minutes to I-90/94
- **Vibrant Surroundings:** Surrounded by top dining and retail including Frontera Grill, XOCO, Bub City, Lil' Ba-Ba Reebea, & more



FRIEDMAN
PROPERTIES

CONTACT: Brian Chernet
bchernet@friedmanproperties.com
(312) 644-1100

443
N. CLARK ST.

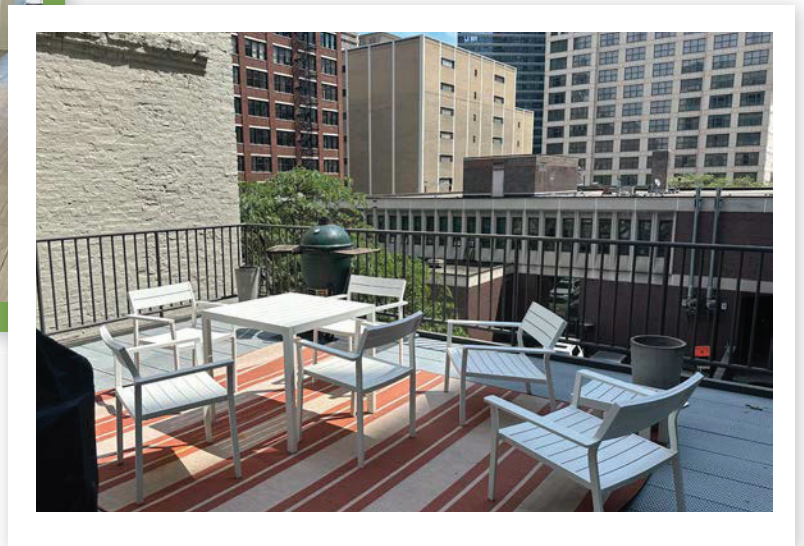
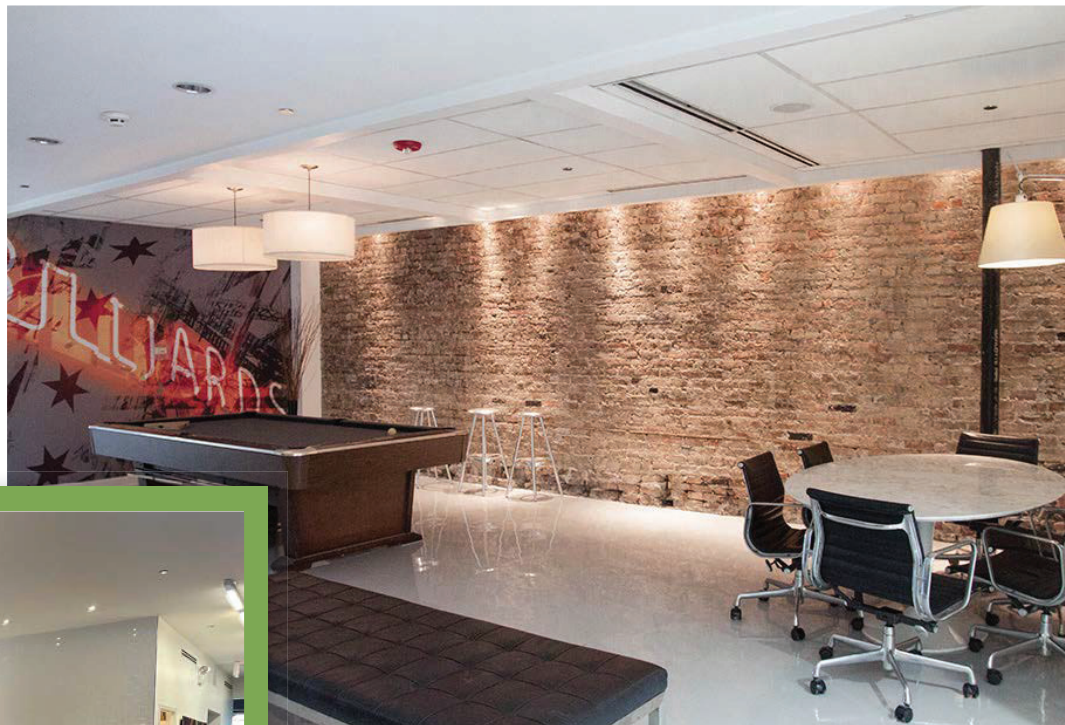
15,932 RSF



443
N. CLARK ST.

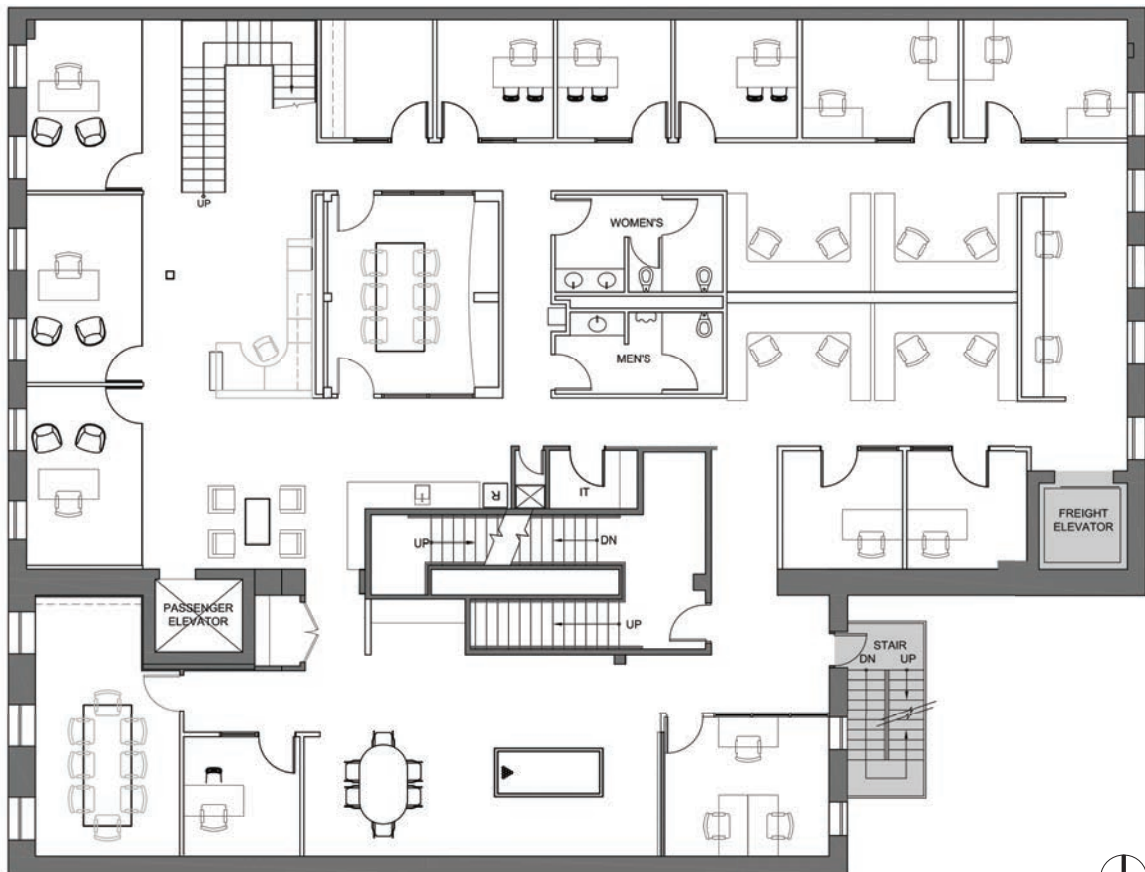


443
N. CLARK ST.



443
N. CLARK ST.

FLOOR 2
6,682 RSF



Not to Scale
Note: Subject premises is unshaded

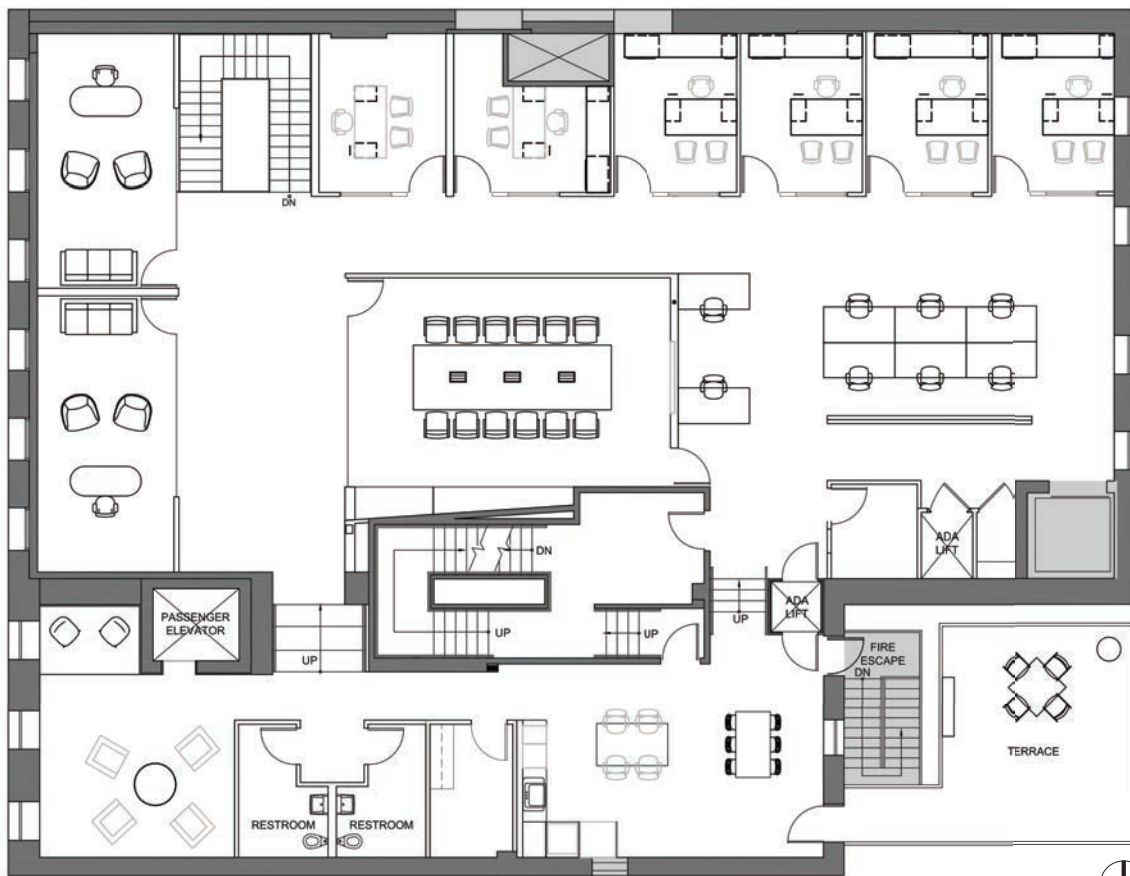
All furniture (including workstations)
shown is for illustrative purposes only.

Plans are for preliminary design purposes.
Friedman Properties, Ltd. advises field
verification of existing conditions and
dimensions prior to use.

07/01/2025

443
N. CLARK ST.

FLOOR 3
6,341 RSF



Not to Scale
Note: Subject premises is unshaded

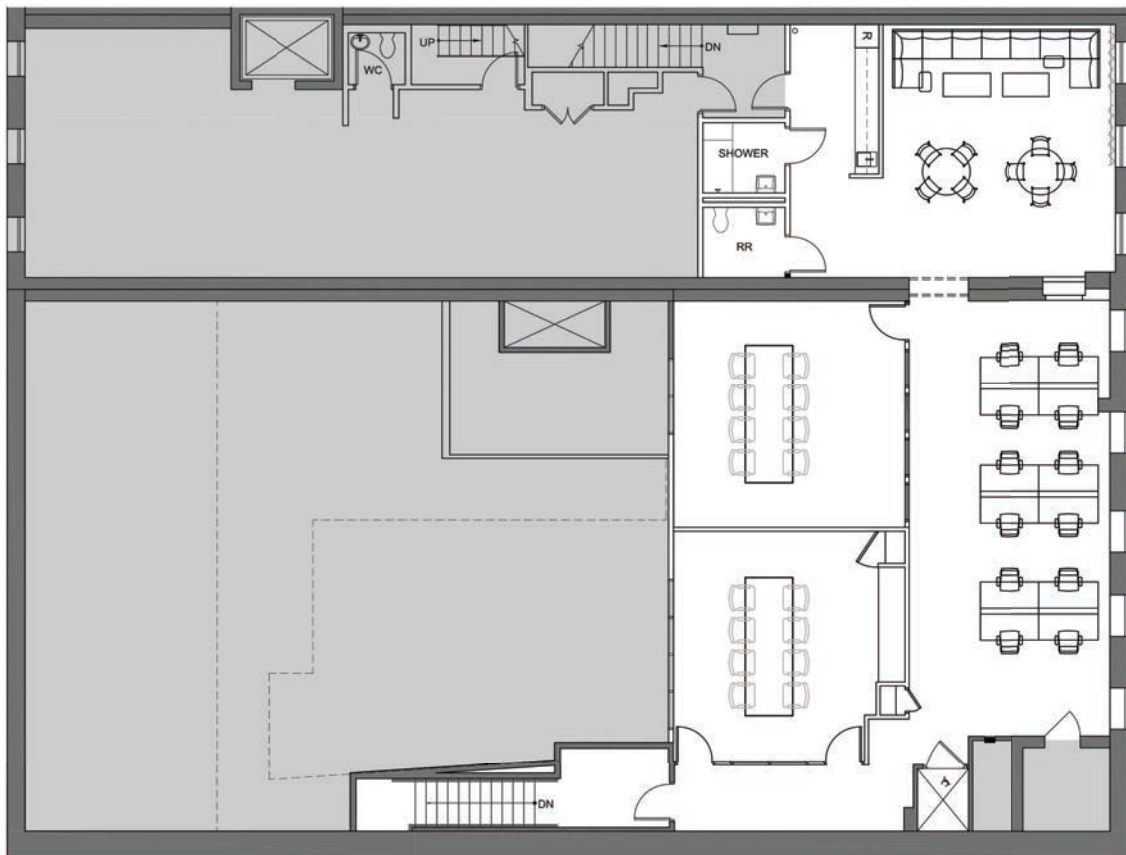
All furniture (including workstations)
shown is for illustrative purposes only.

Plans are for preliminary design purposes.
Friedman Properties, Ltd. advises field
verification of existing conditions and
dimensions prior to use.

07/01/2025

443
N. CLARK ST.

FLOOR 4
2,909 RSF



Not to Scale
Note: Subject premises is unshaded

All furniture (including workstations)
shown is for illustrative purposes only.

Plans are for preliminary design purposes.
Friedman Properties, Ltd. advises field
verification of existing conditions and
dimensions prior to use.

07/01/2025

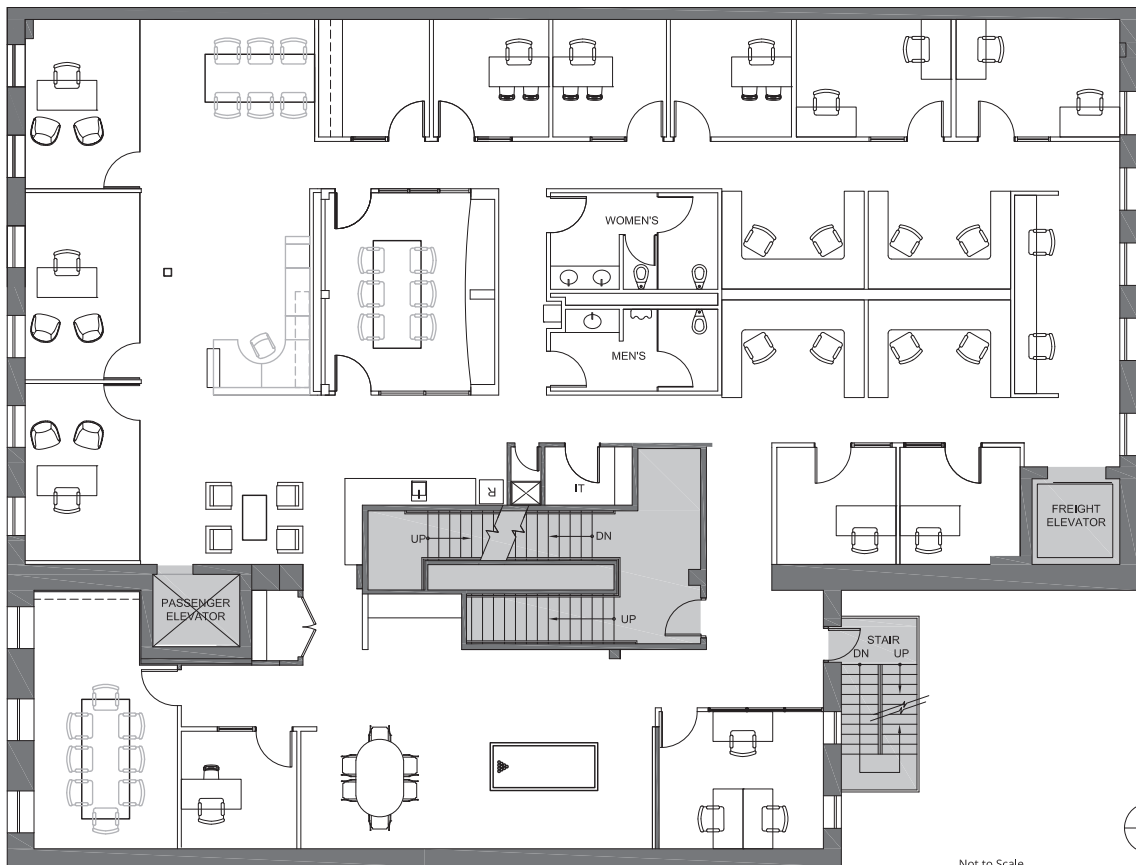


443
N. CLARK ST.

**DEMISING & SUITE
EXPANSION OPTIONS**

443
N. CLARK ST.

SUITE 200, FLOOR 2
6,682 RSF



Not to Scale
Note: Subject premises is unshaded

All furniture (including workstations)
shown is for illustrative purposes only.

Plans are for preliminary design purposes.
Friedman Properties Ltd. advises field
verification of existing conditions and
dimensions prior to use.

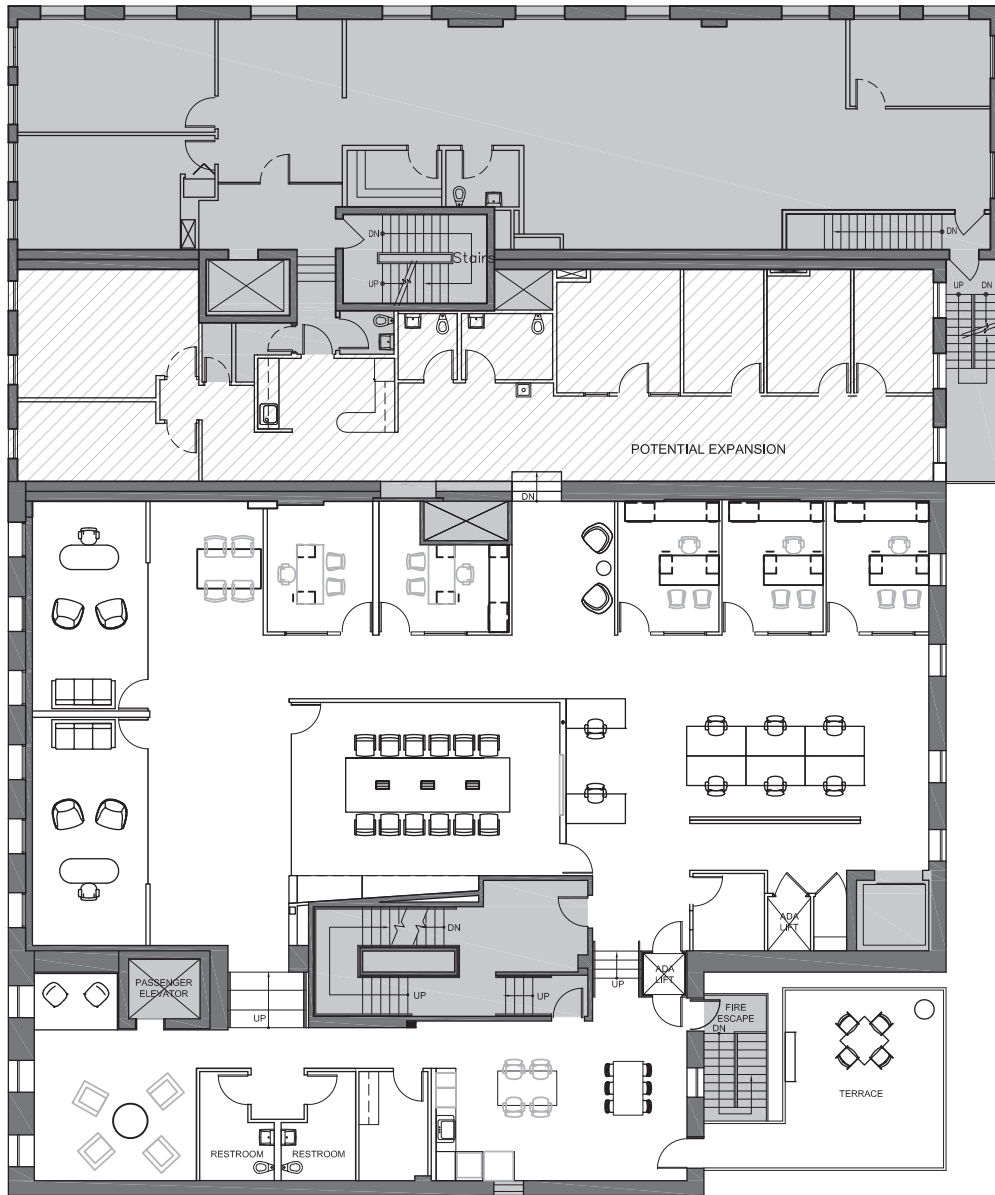
08/04/2025

443
N. CLARK ST.

SUITE 300 - FLOOR 3

6,341 RSF

WITH EXPANSION - 8,779 RSF



Not to Scale
Note: Subject premises is unshaded

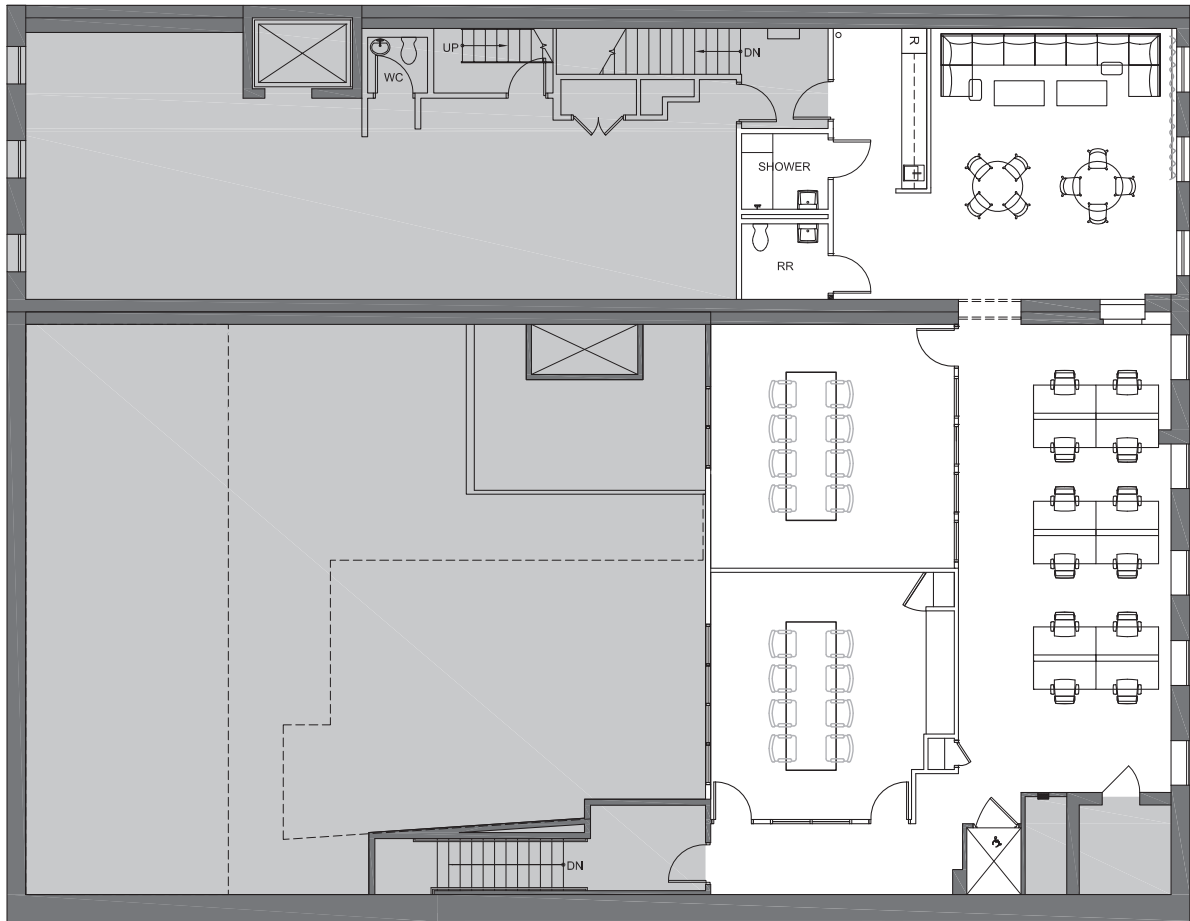
All furniture (including workstations)
shown is for illustrative purposes only.

Plans are for preliminary design purposes.
Friedman Properties, Ltd. advises field
verification of existing conditions and
dimensions prior to use.

08/04/2025

443
N. CLARK ST.

SUITE 300 - FLOOR 4
2,909 RSF



Not to Scale
Note: Subject premises is unshaded

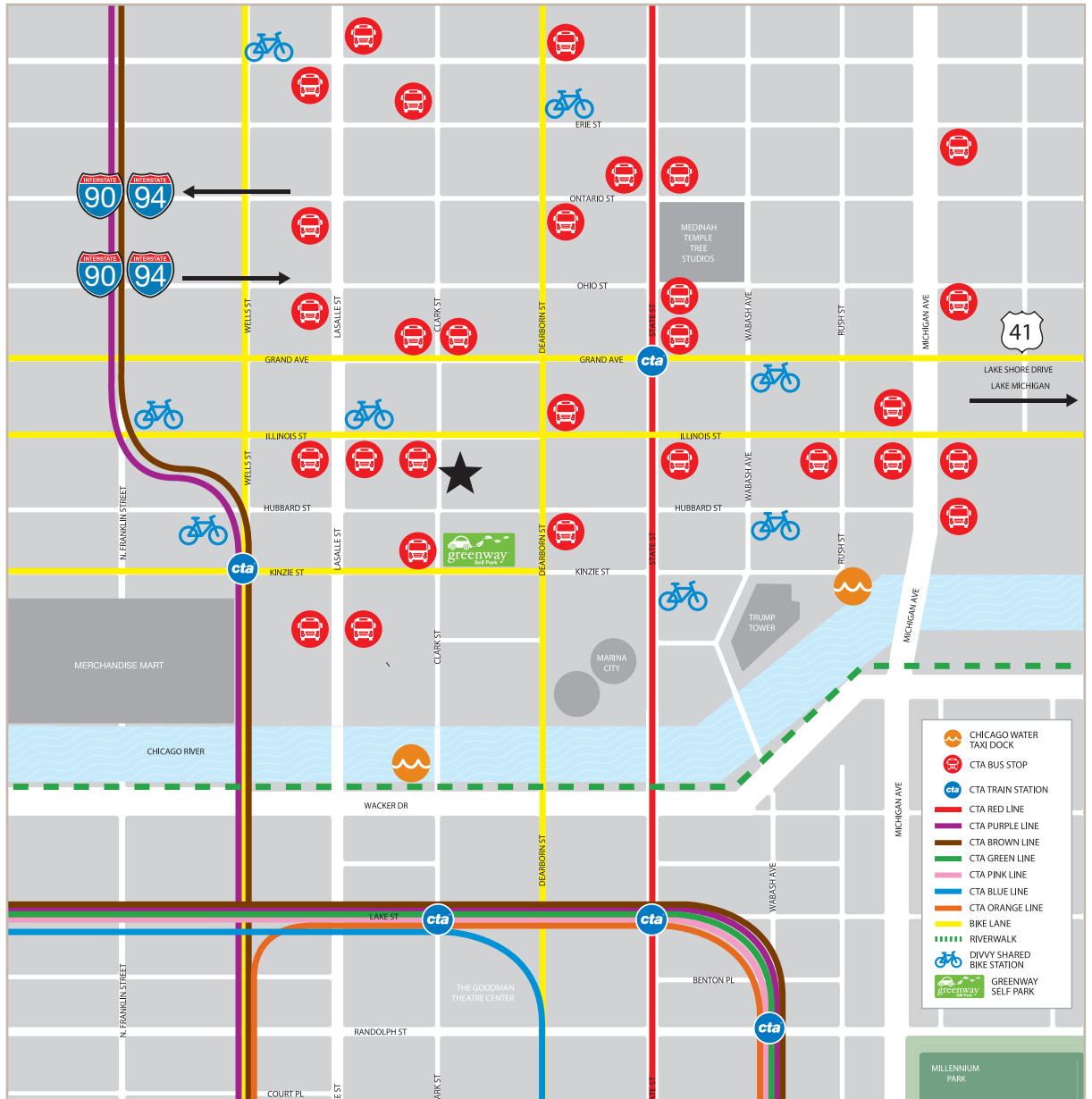
All furniture (including workstations)
shown is for illustrative purposes only.

Plans are for preliminary design purposes.
Friedman Properties, Ltd. advises field
verification of existing conditions and
dimensions prior to use.

08/04/2025

443 N. CLARK ST.

RIVER NORTH TRANSIT



WALK SCORE
98

TRANSIT SCORE
100

BIKE SCORE
88

443 N. CLARK ST.

RIVER NORTH HIGHLIGHTS



AMERICAN

- 1 - BEATRIX
- 2 - BUB CITY
- 3 - GUS' SIP AND DIP
- 4 - HOLLOWAY'S
- 5 - MENDOCINO FARMS
- 6 - RIVER ROAST
- 7 - THE KITCHEN
- 8 - THE SMITH
- 9 - CRYING TIGER
- 10 - OMAKASE ROOM @SUSHI-SAN
- 11 - OMAKASE BY KANEMARU
- 12 - RAMEN-SAN
- 13 - SEOUL SPICE
- 14 - SUNDA
- 15 - SUSHI-SAN

BAGELS & SANDWICHES

- 16 - CORNER BAKERY
- 17 - EINSTEIN'S BROS. BAGELS
- 18 - NONNINA DELI

BAKERY

- 19 - CAFÉ CRÈMERIE
- 20 - PETERINO'S PASTICCERIA
- 21 - FIRECAKES DONUTS
- 22 - L.A. BURDICK
- 23 - LEVAIN BAKERY

COFFEE & TEA

- 24 - CAFFÈ UMBRIA
- 25 - STARBUCKS COFFEE

FRENCH

- 26 - LA GRANDE BOUCHERIE

HEALTHY

- 27 - PROTEIN BAR
- 28 - SWEETGREEN

INDIAN

- 29 - INDIA HOUSE

ITALIAN

- 30 - MAGGIANO'S LITTLE ITALY
- 31 - IL PORCELLINO
- 32 - NONNINA
- 33 - OLIO E PIÙ
- 34 - PETERINO'S
- 35 - RPM ITALIAN
- 36 - UMMO

MEDITERRANEAN

- 37 - EMA
- 38 - ROTISSERIE EMA

MEXICAN

- 39 - BAR SÓTANO
- 40 - BODEGA TAQUERIA Y TEQUILA
- 41 - FRONTERA GRILL
- 42 - TOPOLOBAMPO
- 43 - XOCO
- 44 - ZOMBIE TACO

PLANT-BASED

- 45 - PLANTA QUEEN

SEAFOOD

- 46 - BLUE CRAB LOUNGE
- 47 - SHAW'S CRAB HOUSE

SPANISH / TAPAS

- 48 - LIL' BA-BA-REEBA

STEAKHOUSES

- 49 - MASTRO'S STEAKHOUSE
- 50 - RPM STEAK

ENTERTAINMENT

- 51 - BALLY'S CHICAGO
- 52 - HOWL AT THE MOON
- 53 - MAGIC PARLOUR
- 54 - POPS FOR CHAMPAGNE
- 55 - THREE DOTS & A DASH
- 56 - WATERSHED

PARKING

- 57 - GREENWAY SELF PARKING