



Property Description



\$2.15 - \$2.25 psf Full Service Gross



±998 to 50,000 Square Feet



Located on Convention Center Drive between Paradise Road and Las Vegas Boulevard



Property manager on-site



Walking distance to food and retail



Window line private offices with natural light



Across from Convention Center



Abundant parking in parking structure

Get more information

JAYNE CAYTON

Principal - Office
+1 725 228 6022
jayne.cayton@avisonyoung.com
License #: S.0043335

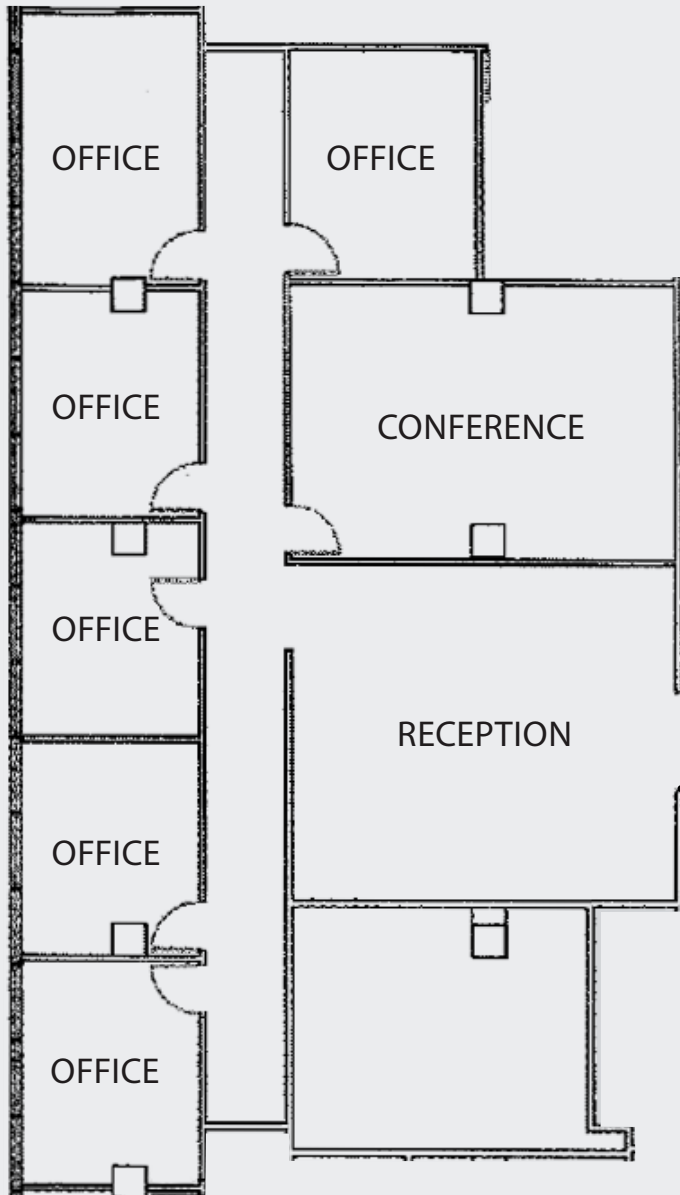
MATT KREFT

Vice President - Office
+1 725 228 6023
matt.kreft@avisonyoung.com
License #: S.0063422

GRAHAM PEAVEY

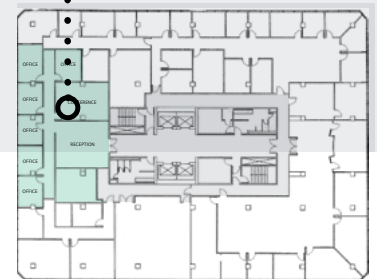
Senior Associate - Office
+1 702 637 7719
graham.peavey@avisonyoung.com
License #: S.0199818

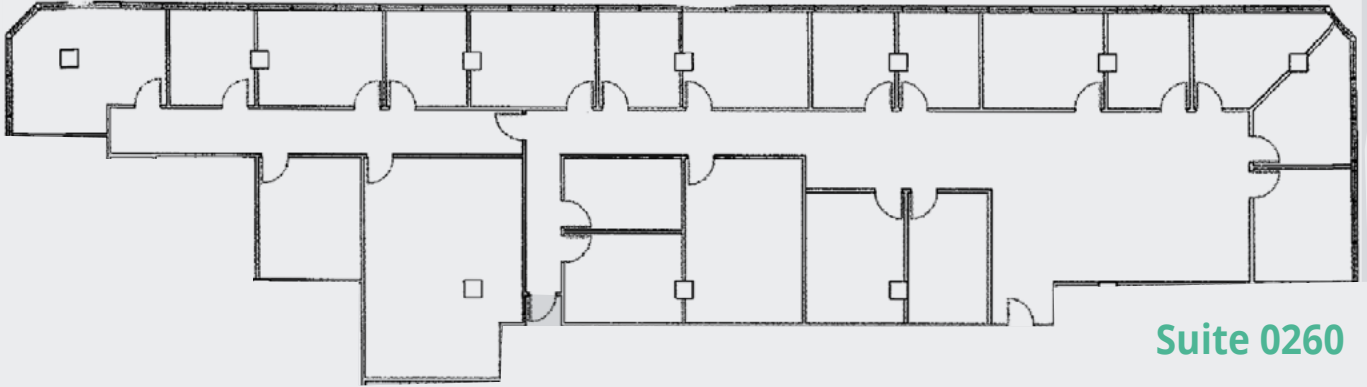
avisonyoung.com



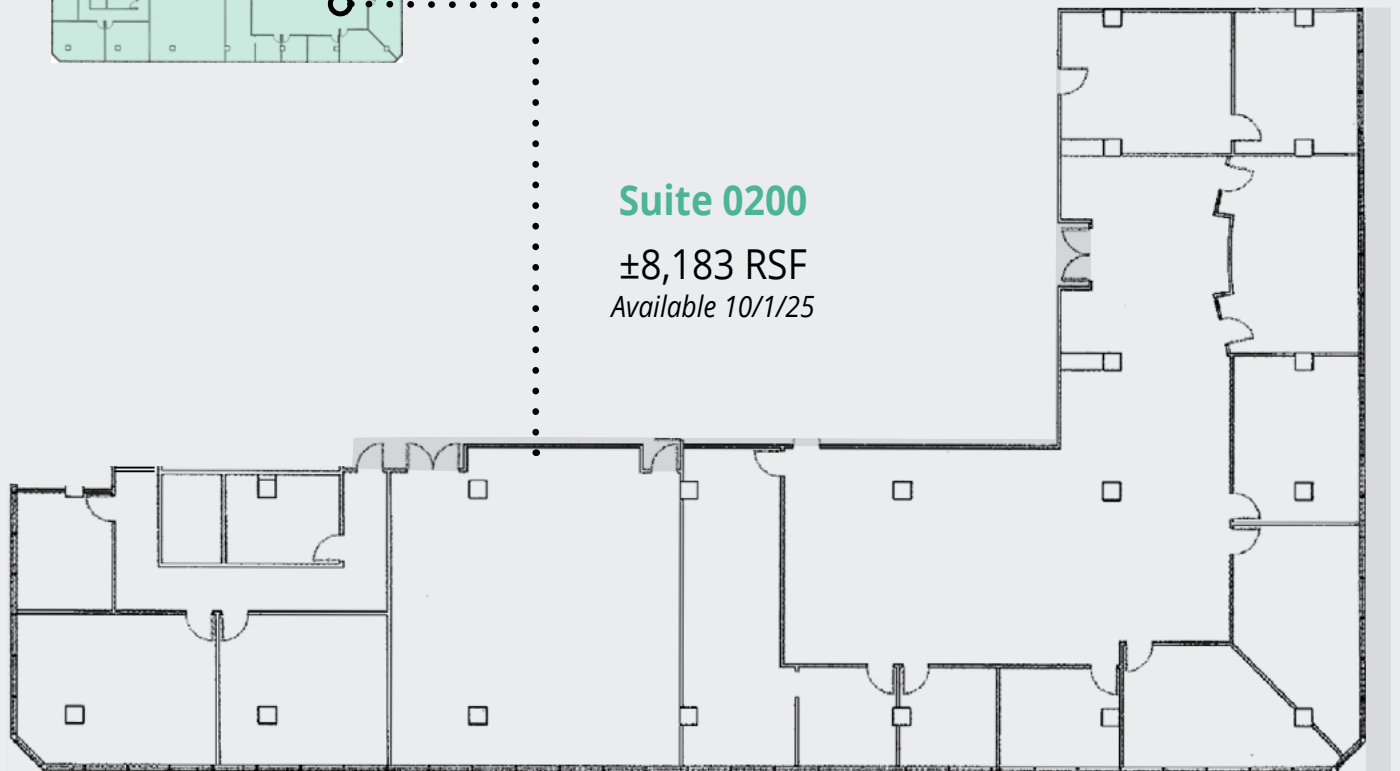
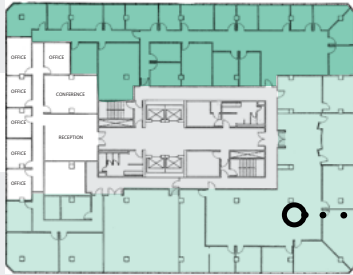
Suite 0250

±3,852 RSF

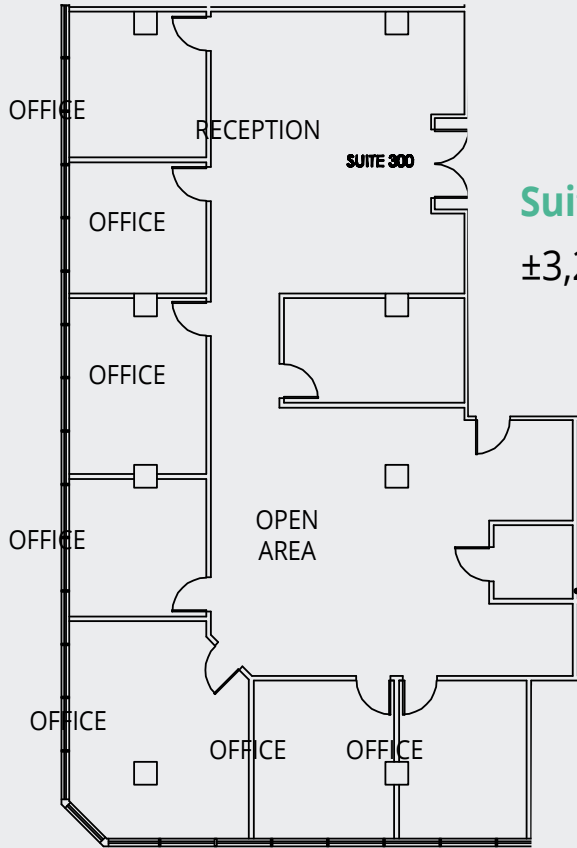




Suite 0260
±3,302 RSF

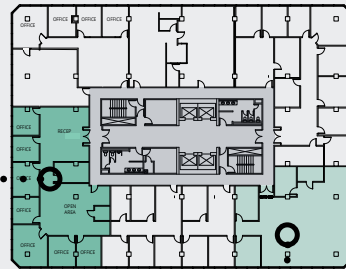


Suite 0200
±8,183 RSF
Available 10/1/25



Suite 0300

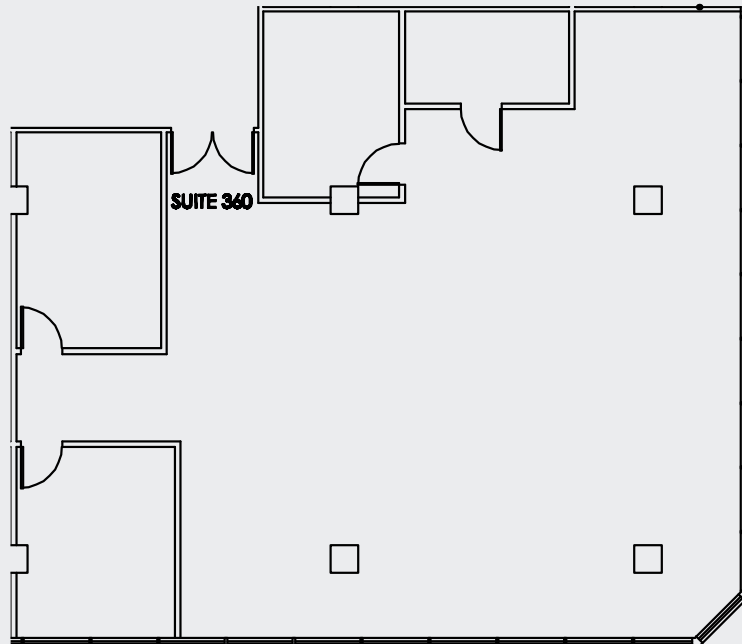
±3,286 RSF

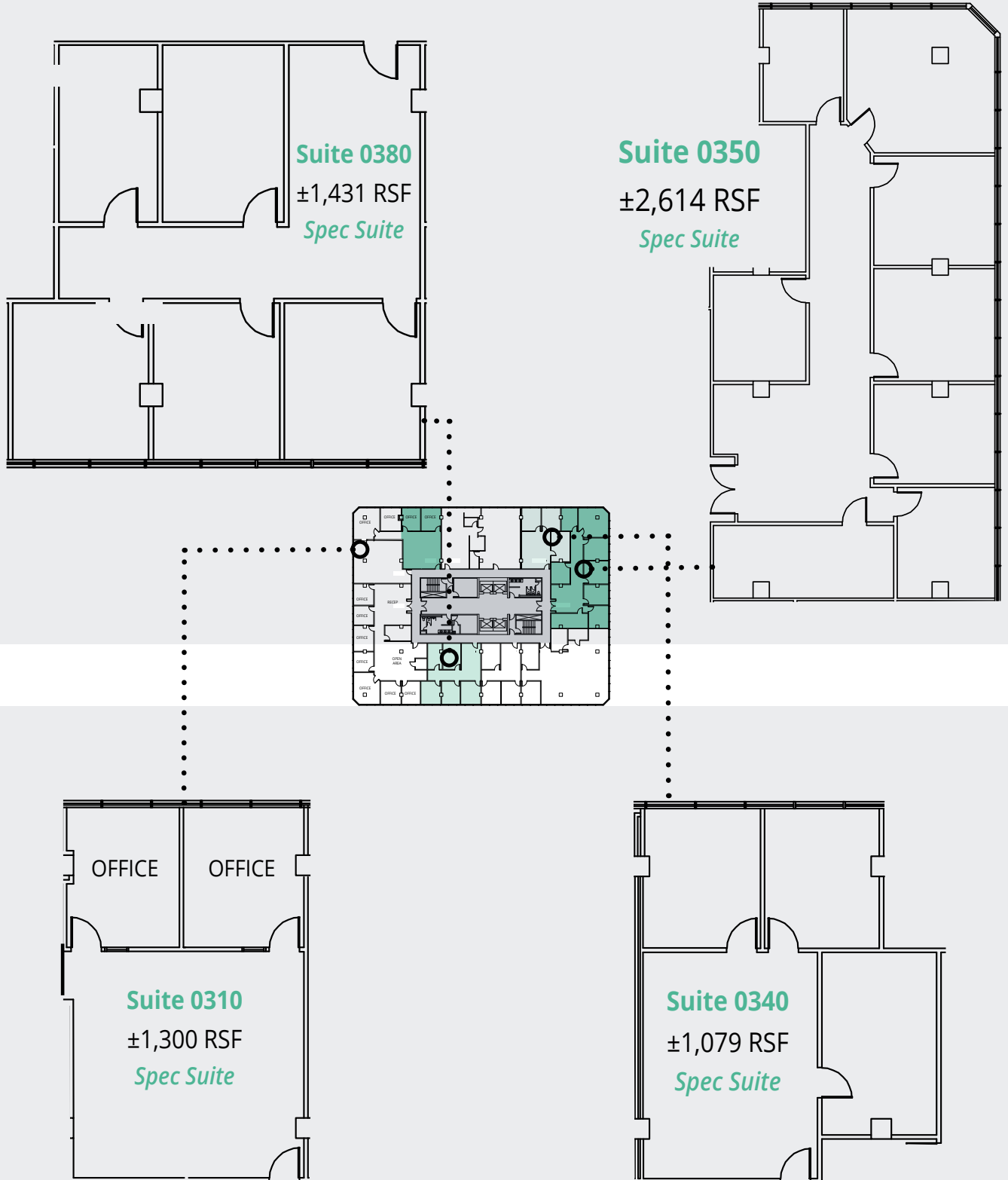


Suite 0360

±2,811 RSF

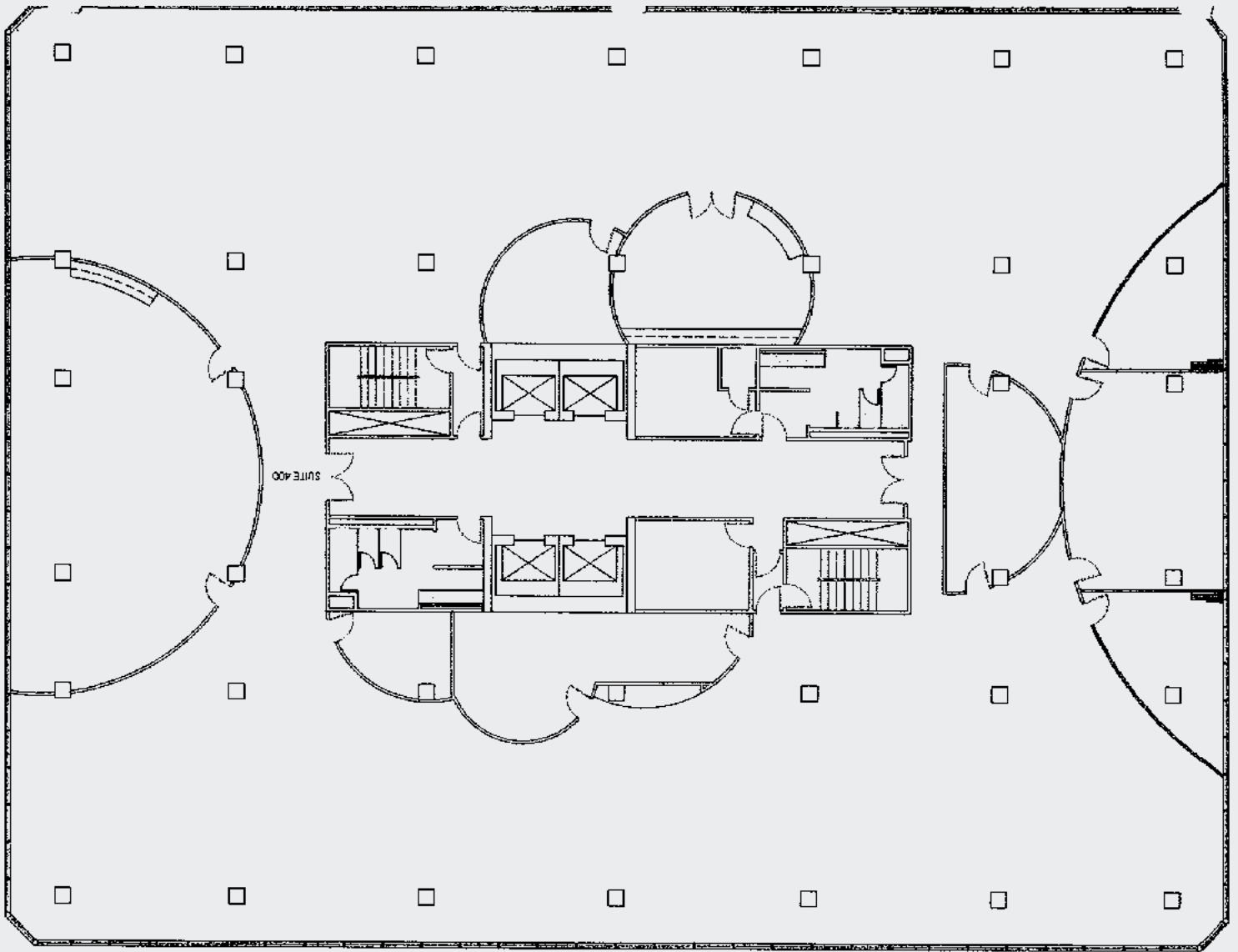
Available 10/1/25





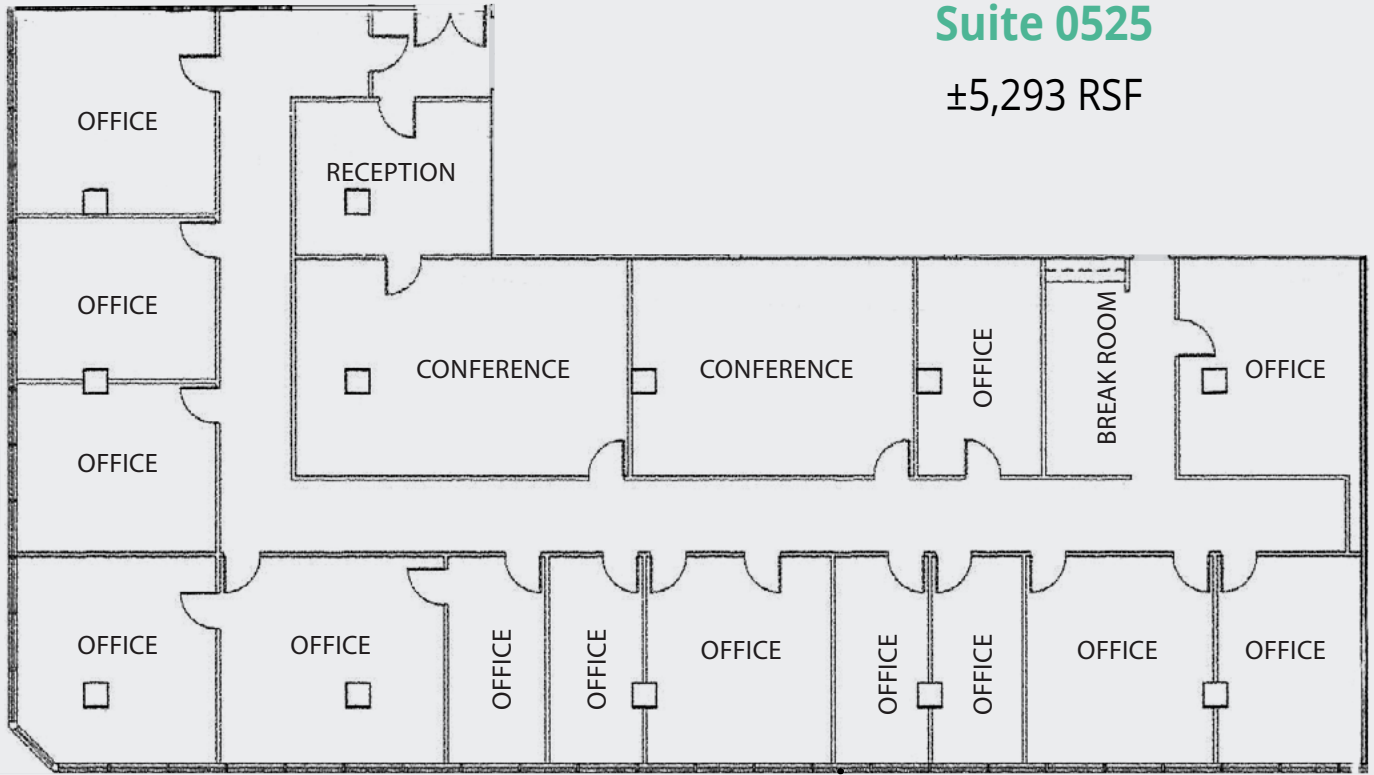
Suite 0400

±16,936 RSF



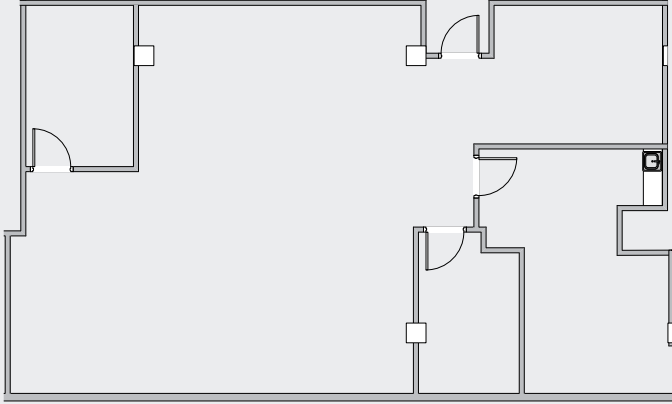
Suite 0525

±5,293 RSF



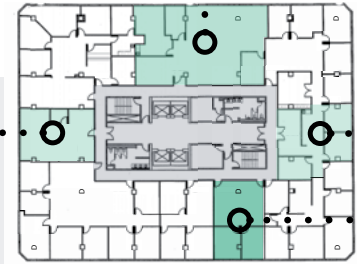
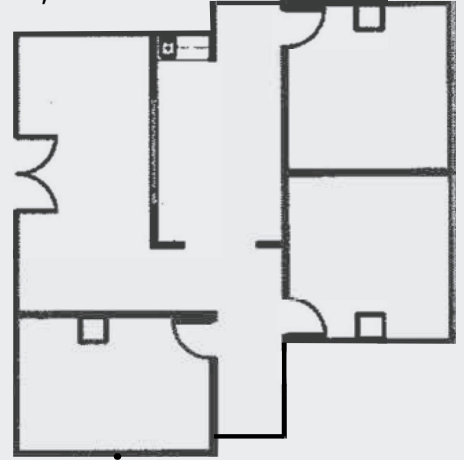
Suite 0605

±2,800 RSF



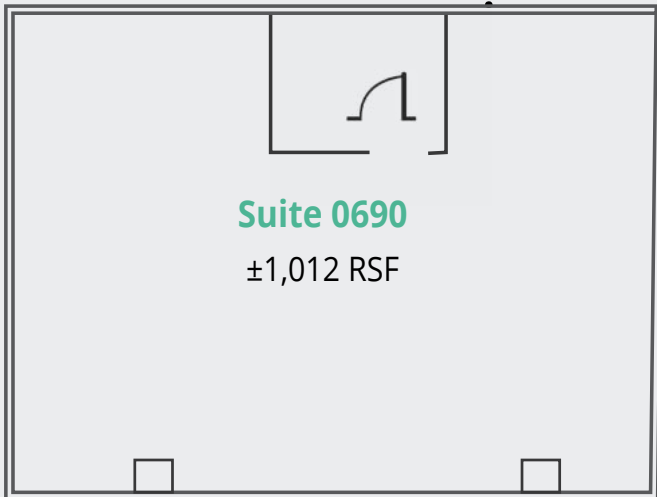
Suite 0630

±1,840 RSF



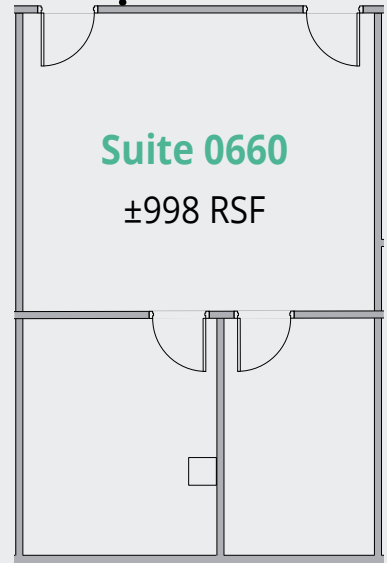
Suite 0690

±1,012 RSF



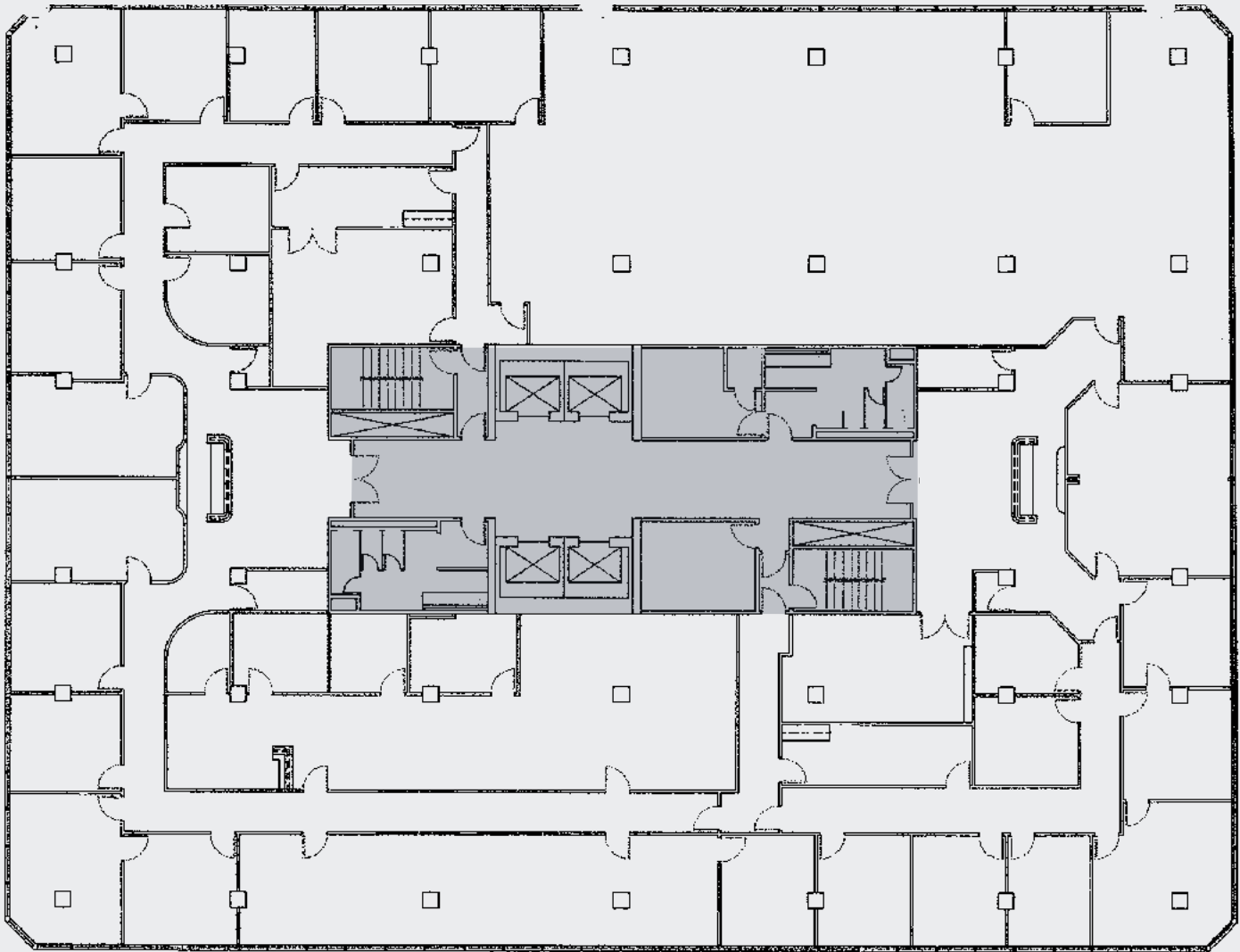
Suite 0660

±998 RSF



Suite 0700

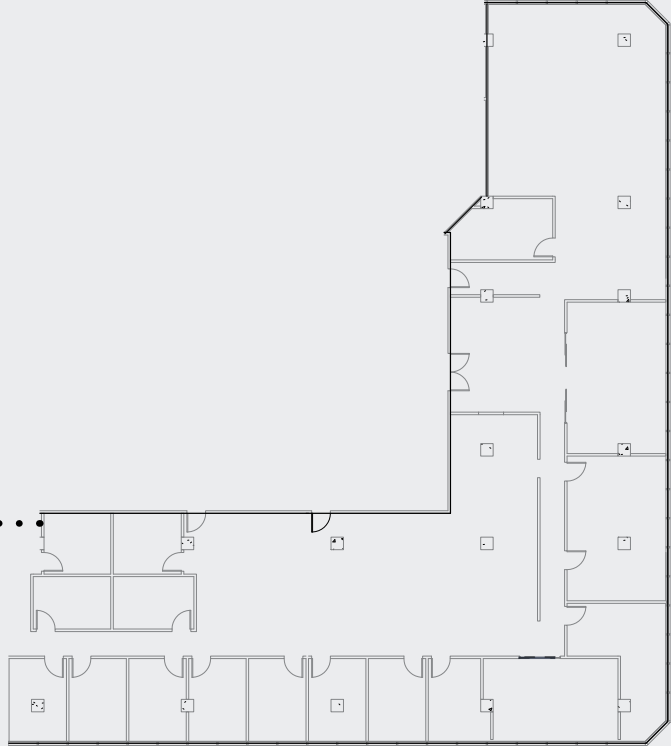
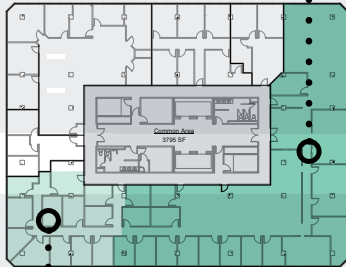
±16,936 RSF





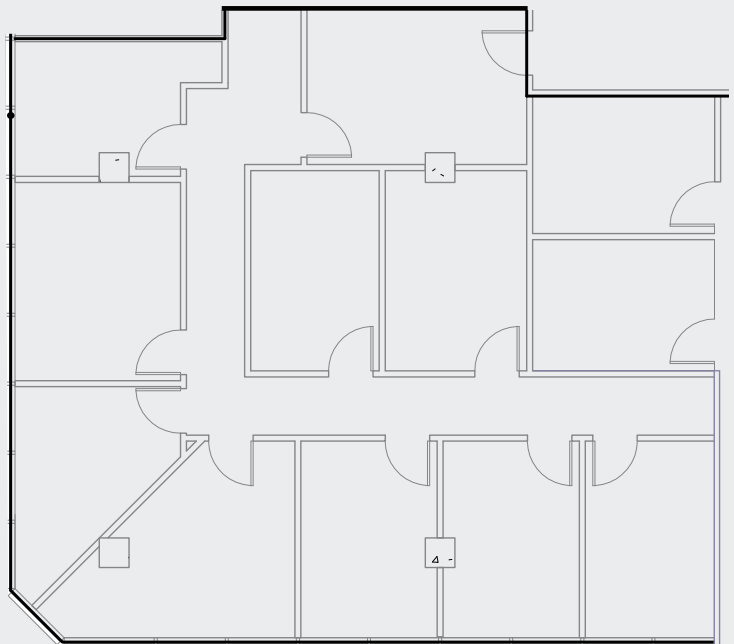
**SUITE 850
VIRTUAL TOUR**

±8,630 RSF



Suite 0880

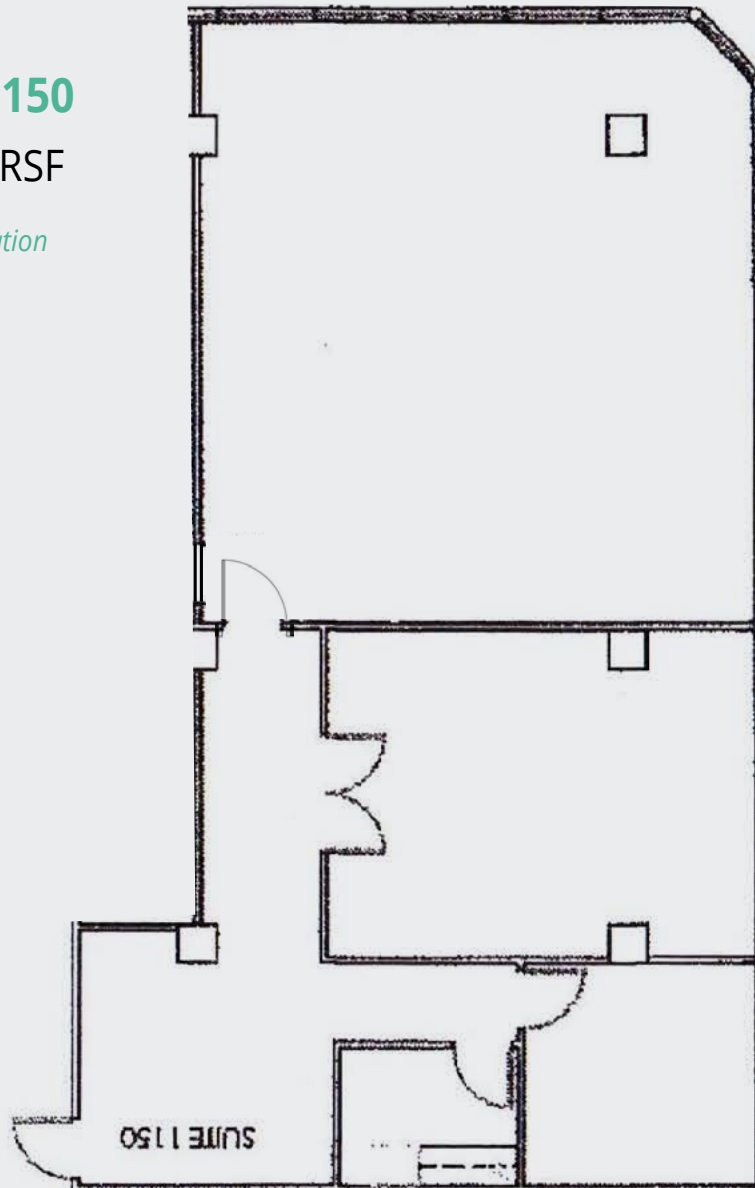
±1,351 RSF



Suite 1150

±2,045 RSF

In Negotiation





Get more information

JAYNE CAYTON
Principal - Office
+1 725 228 6022
jayne.cayton@avisonyoung.com
License #: S.0043335

MATT KREFT
Vice President - Office
+1 725 228 6023
matt.kreft@avisonyoung.com
License #: S.0063422

GRAHAM PEAVEY
Senior Associate
+1 702 637 7719
graham.peavey@avisonyoung.com
License #: S.0199818

10845 Griffith Peak Dr., Ste. 100, Las Vegas, NV 89135