



**Eastgate Plaza Shopping Center
6901 N 9th Avenue
Pensacola, FL 32504**



**Suites 16-17 – 7,377 SF
Suite Profile
2025**

EASTGATE PLAZA – PENSACOLA, FL

SUITE 16-17 – 7,377 SF

TENANT ROSTER

SUITE	TENANT	SIZE
1	Lickin Good Donuts	925 SF
2	Freeway Insurance	875 SF
3	Cricket Wireless	900 SF
4	Jackson Hewitt	1,294 SF
5	Hungry Howie's	1,481 SF
7	2B Postal	1,216 SF
8	P&R Nails	806 SF
9	Max Fit Sports Nutrition	1,577 SF
9A	TRIO Community Meals	2,500 SF
10-11	Advantage Dental+ Pensacola	5,795 SF
12-15	CareerSource Escarosa	19,250 SF
16-17	Available	7,377 SF
18	Available	1,400 SF
19	Available	3,406 SF
20	Available	3,867 SF
25	Guitar Center	9,600 SF
28	Available	18,690 SF
28A	PCola Habitat for Humanity ReStore	21,900 SF
29AB	Pensacola Fitness	18,881 SF
30	Winn-Dixie	43,750 SF
1-2N	Available	2,718 SF
3N	Available	1,200 SF
4N	Pearson Vue Testing	1,200 SF
5N	Leasing Office	1,170 SF
5NA	Available	2,400 SF
5NB	Available	1,185 SF
6N	Available	2,377 SF
7N	Mariner Finance	1,550 SF
8N	CiCi's Pizza	4,809 SF
GL	Synovus ATM	



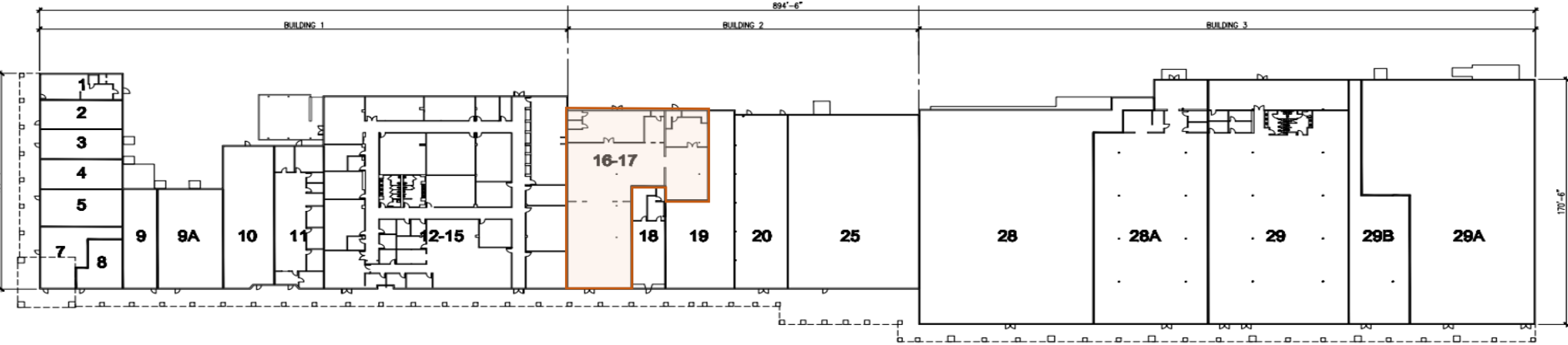
Eastgate Plaza – Pensacola, FL
Suites 16-17 – 7,377 SF



SUITES 16-17
7,377 SF

Eastgate Plaza – Pensacola, FL

Suites 16-17 – 7,377 SF

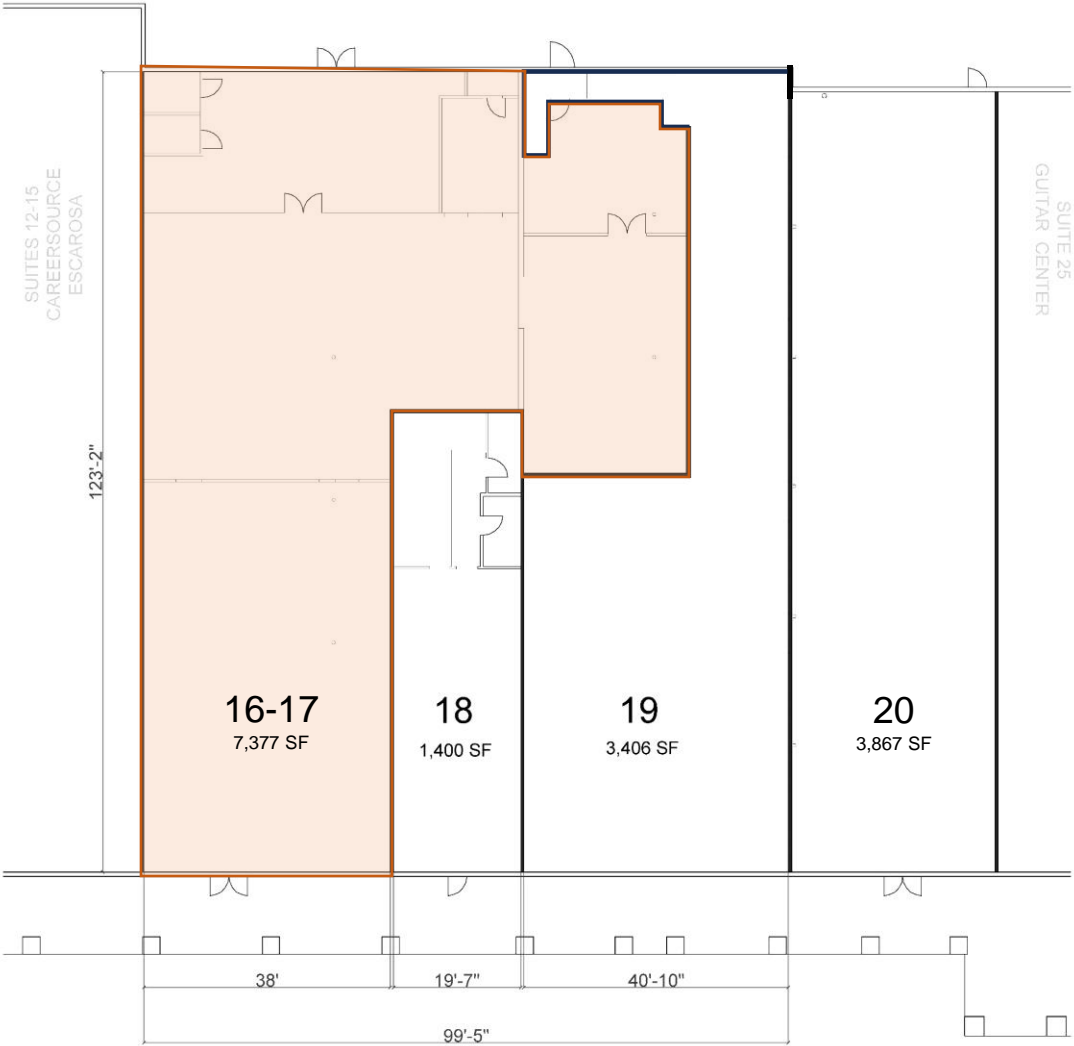


OVERALL FLOOR PLAN - BUILDINGS 1, 2 & 3



Eastgate Plaza – Pensacola, FL

Suites 16-17 – 7,377 SF



LEGEND

- EP = ELECTRICAL PANEL
- ⊖ = THERMOSTAT
- ☐ = 24"x24" RETURN AIR GRILLE/FILTER
- RAG = CEILING

KEYNOTES

- ① GWB FINISH WALL
- ② EXPOSED CMU WALL
- ③ 6" STEEL COLUMN - TYP.
- ④ UTILITY SINK
- ⑤ 3-COMPARTMENT UTILITY SINK
- ⑥ 30 GAL. WATER HEATER ABOVE TOILETS
- ⑦ STAIRS UP TO MEZZANINE - 600 S.F.
- ⑧ 48"x48" RETURN AIR GRILLE
- ⑨ 600 S.F. (APROX) MEZZANINE (ABOVE)

NOTES

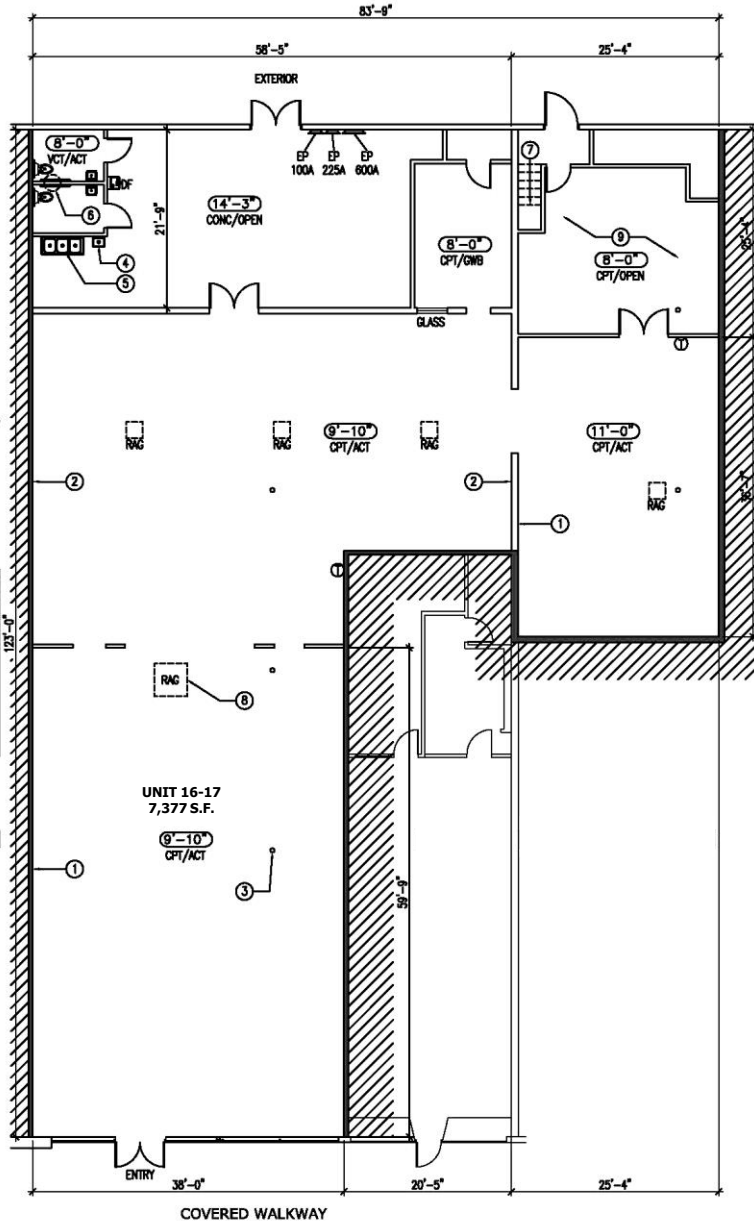
- 1. POWER OUTLETS AND POWER STRIPS NOT SHOWN FOR CLARITY. THIS UNIT HAS PLENTY OF POWER OUTLETS. NO FLOOR OUTLETS.

FLOOR AREAS

≈ B.O.H.
1,950 S.F.

RETAIL
5,427 S.F.

UNIT 16-17
7,377 S.F.



DRAWING BY: ALCALA ARCHITECTURE 2013

**UNIT 16-17 (6923-A)
EASTGATE PLAZA SHOPPING CENTER**



UPDATED 01-04-13

LEGEND

- EP = ELECTRICAL PANEL
- ⊖ = THERMOSTAT
- ☐ = 24"x24" RETURN AIR GRILLE/FILTER
- RAG = CEILING

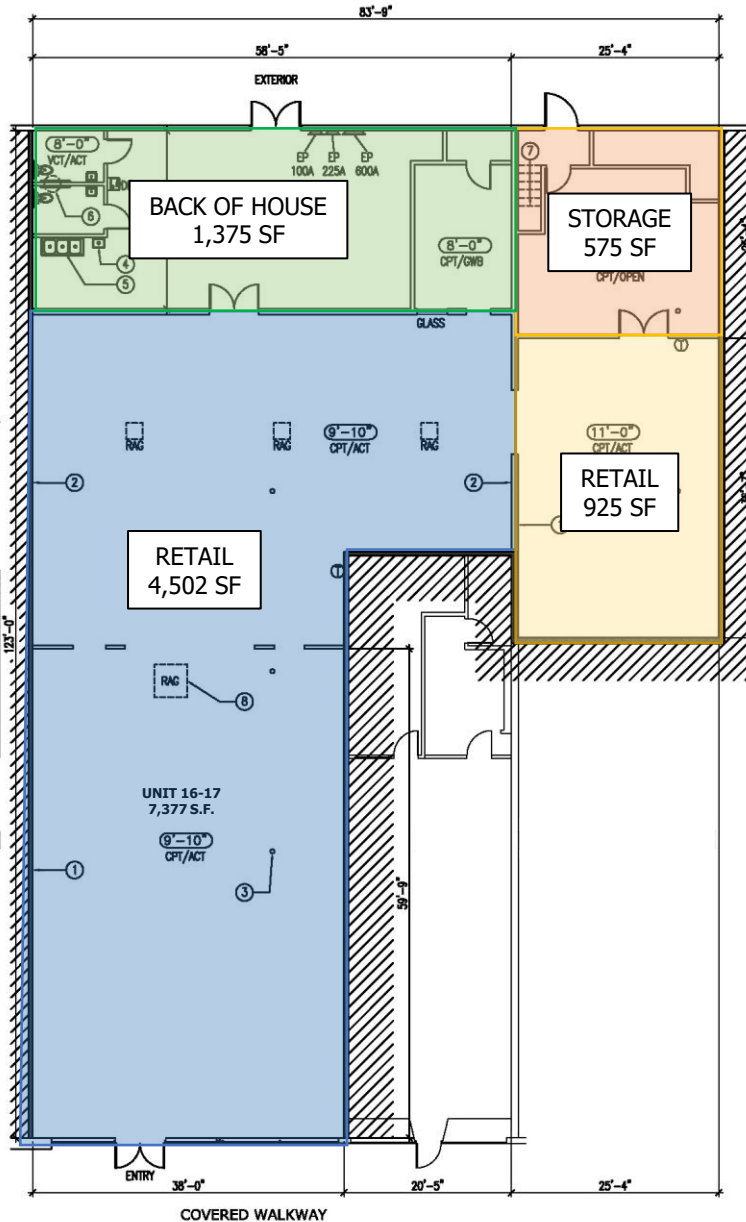
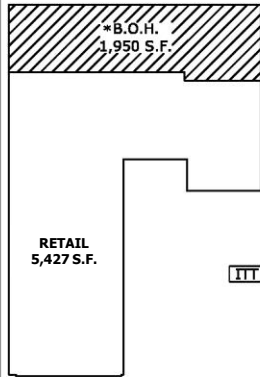
KEYNOTES

- ① GWB FINISH WALL
- ② EXPOSED CMU WALL
- ③ 6" STEEL COLUMN - TYP.
- ④ UTILITY SINK
- ⑤ 3-COMPARTMENT UTILITY SINK
- ⑥ 30 GAL. WATER HEATER ABOVE TOILETS
- ⑦ STAIRS UP TO MEZZANINE - 600 S.F.
- ⑧ 48"x48" RETURN AIR GRILLE
- ⑨ 600 S.F. (APPROX) MEZZANINE (ABOVE)

NOTES

- 1. POWER OUTLETS AND POWER STRIPS NOT SHOWN FOR CLARITY. THIS UNIT HAS PLENTY OF POWER OUTLETS. NO FLOOR OUTLETS.

FLOOR AREAS



UNIT 16-17 (6923-A)
EASTGATE PLAZA SHOPPING CENTER

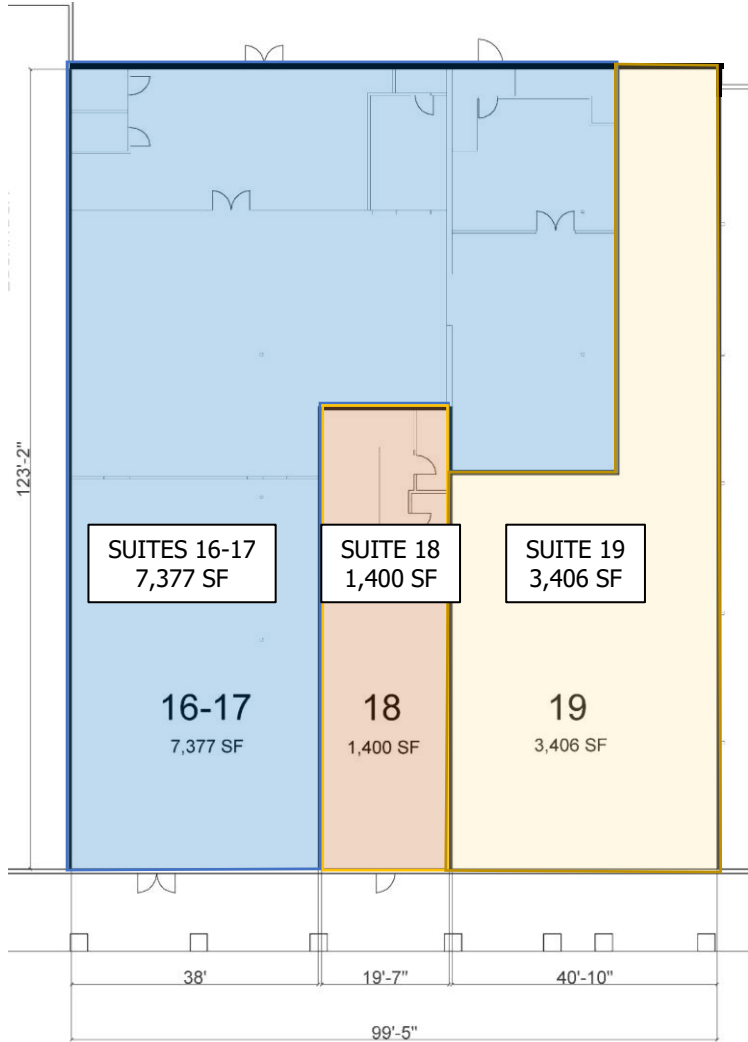


UPDATED 01-04-13

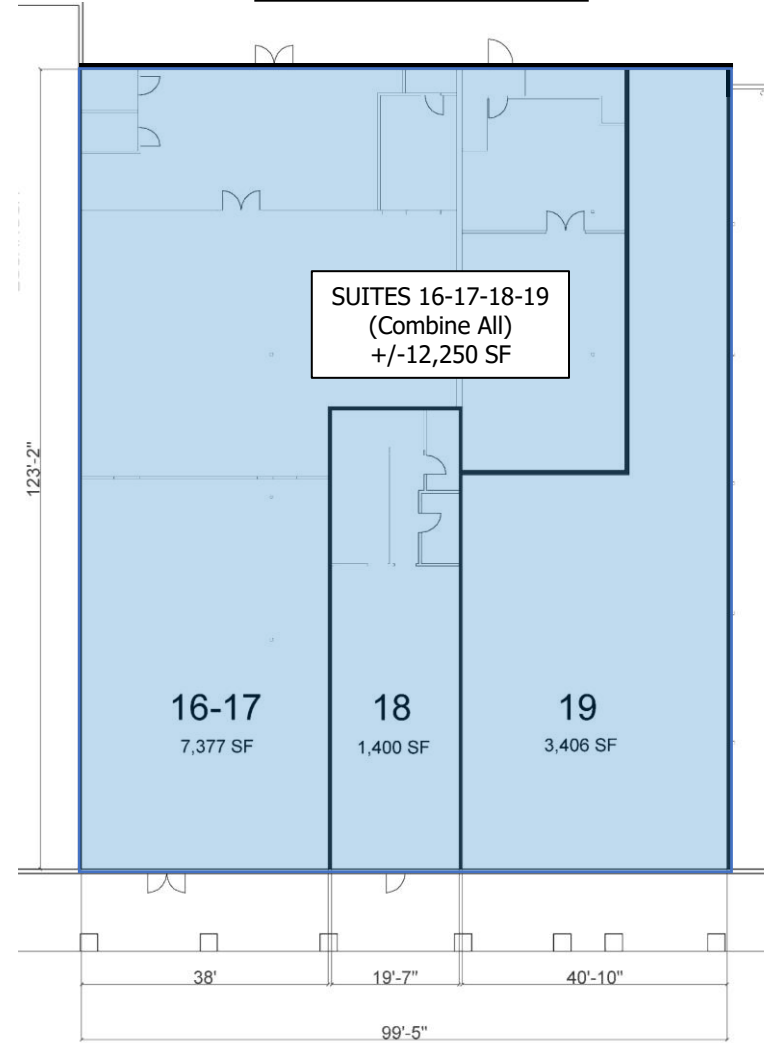
Eastgate Plaza – Pensacola, FL

Suites 16-19 – Potential Suite Layouts

AS-IS



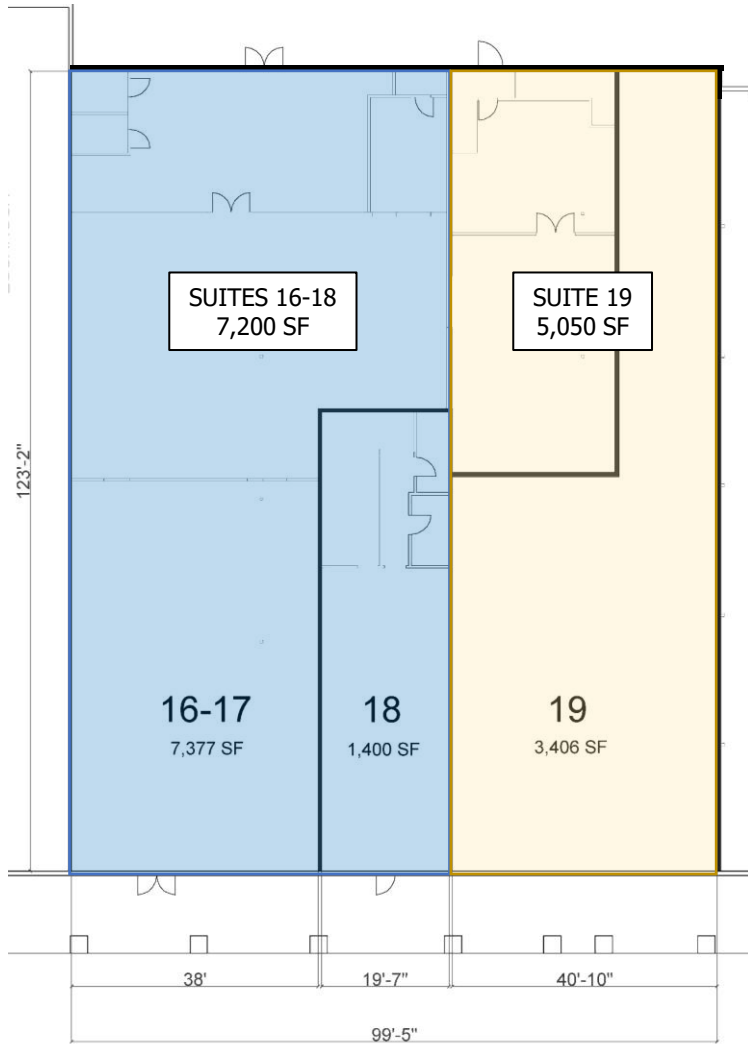
SCENARIO #1



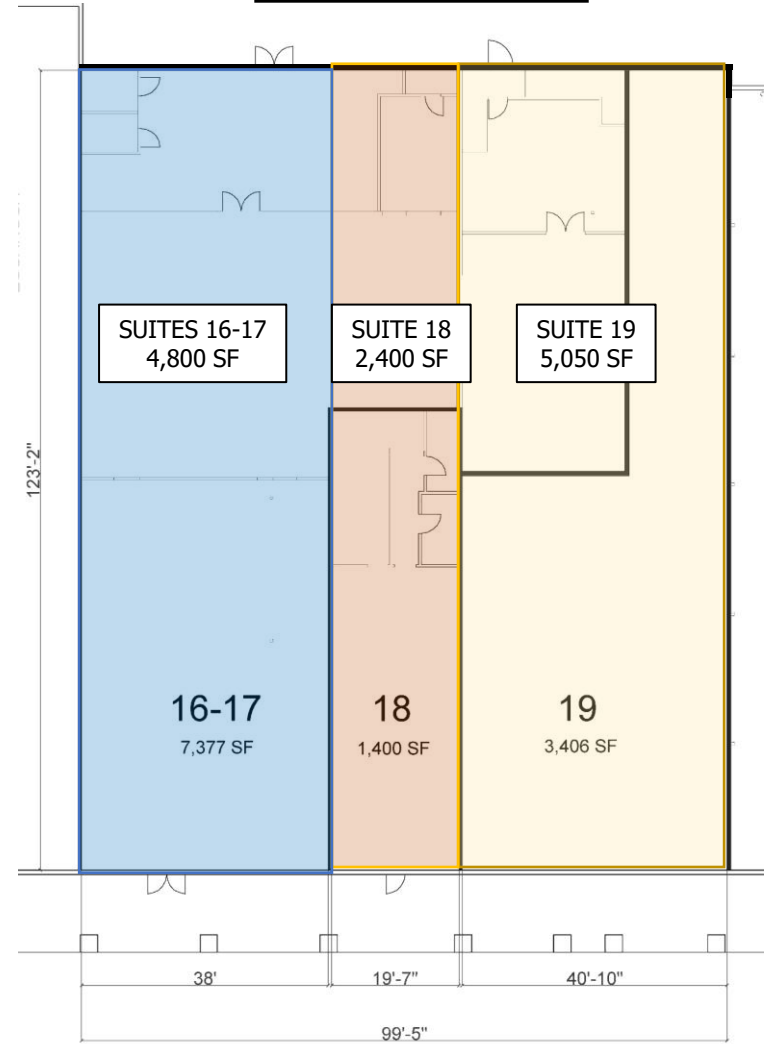
Eastgate Plaza – Pensacola, FL

Suites 16-19 – Potential Suite Layouts

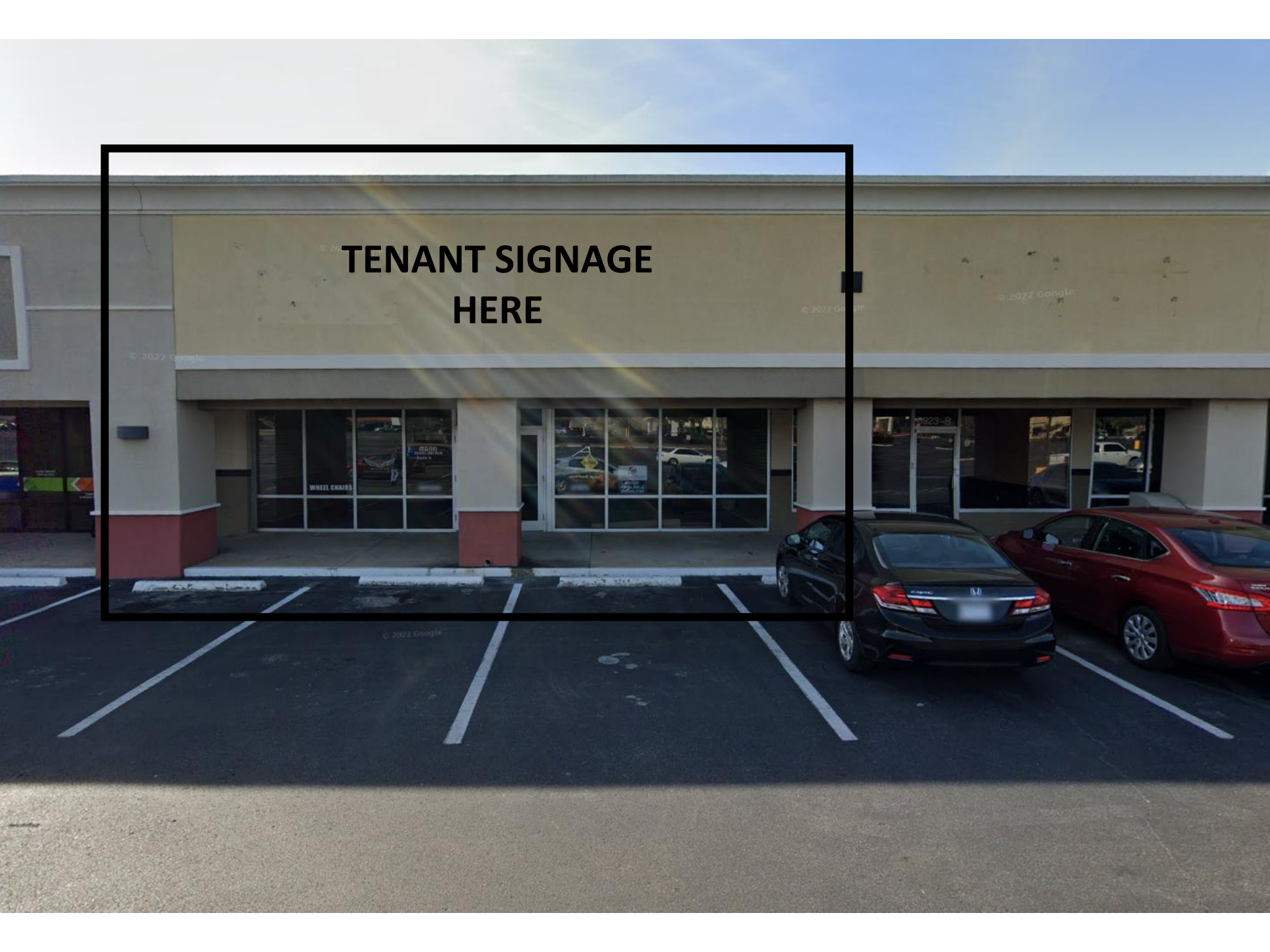
SCENARIO #2



SCENARIO #3



**TENANT SIGNAGE
HERE**





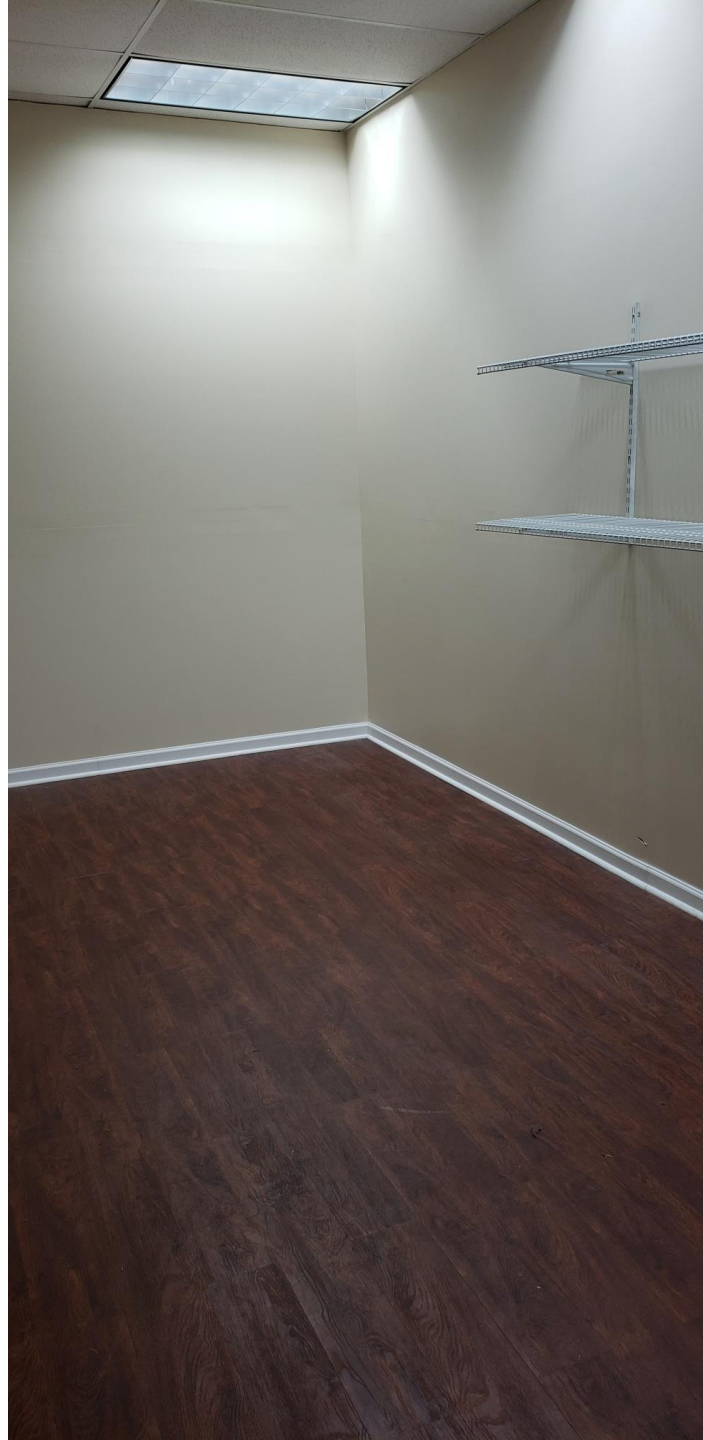






























EXIT

NOT AN EXIT



Eastgate Plaza – Pensacola, FL

Suites 16-17 – 7,377 SF

HVAC Summary

Suites 16-17 – HVAC #02

Model: BRYANT
Size: 5-Ton
MFR Date: April 2006

Suites 16-17 – HVAC #01

Model: TRANE
Size: 10-Ton
MFR Date: June 2000



Ashley HOMESTORE
Batteries + Bulbs
FIREHOUSE SUBS
Pet Super market
Little Caesars
DOLLAR TREE

HobbyTown
GameStop
ZAXBY'S

Walmart



PENSACOLA International Airport

