

1100

North Sherman St.

YORK, PENNSYLVANIA

FOR LEASE

Industrial Warehouse Facility



11,965 SF

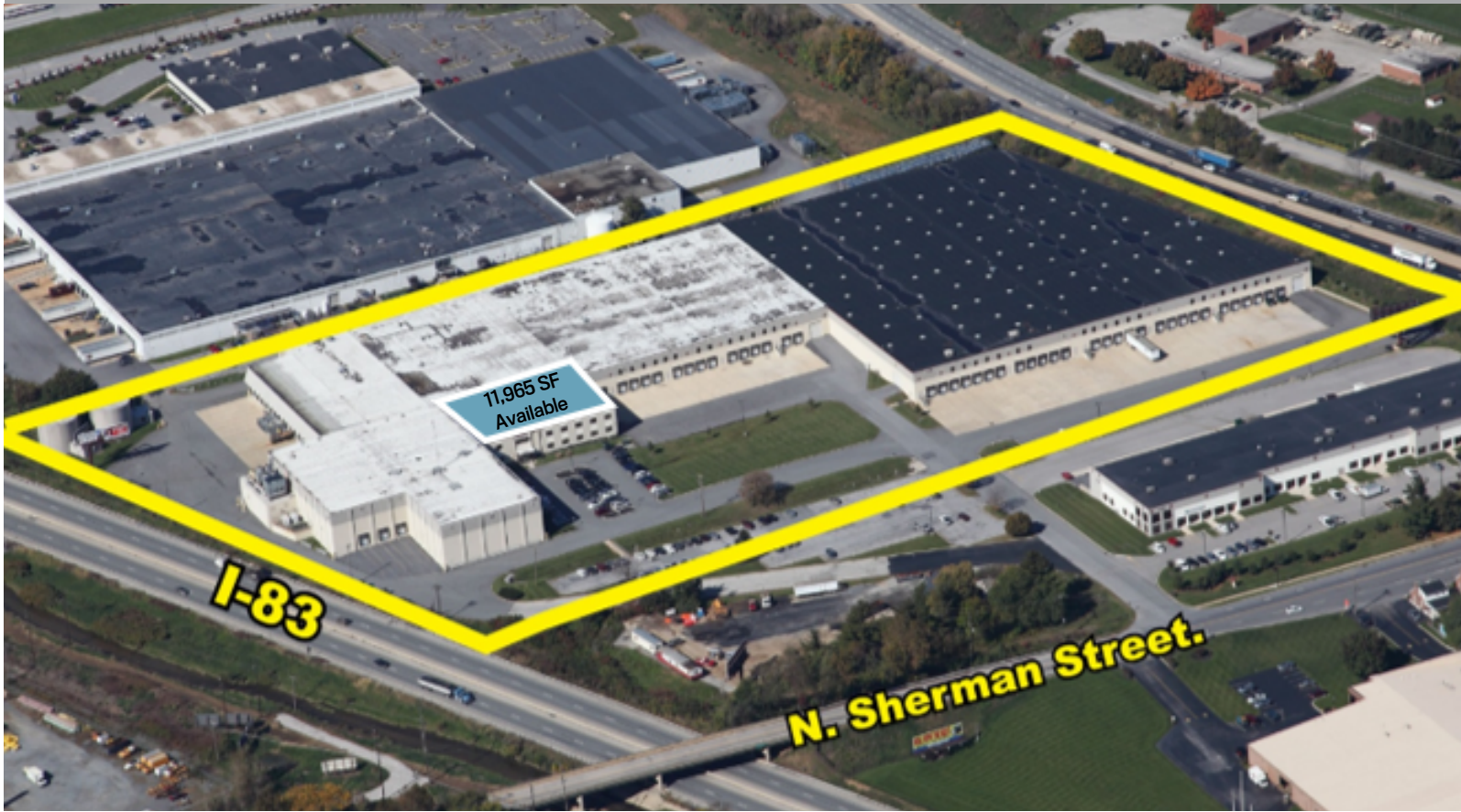
AVAILABLE

KINSLEY
PROPERTIES

Contact:

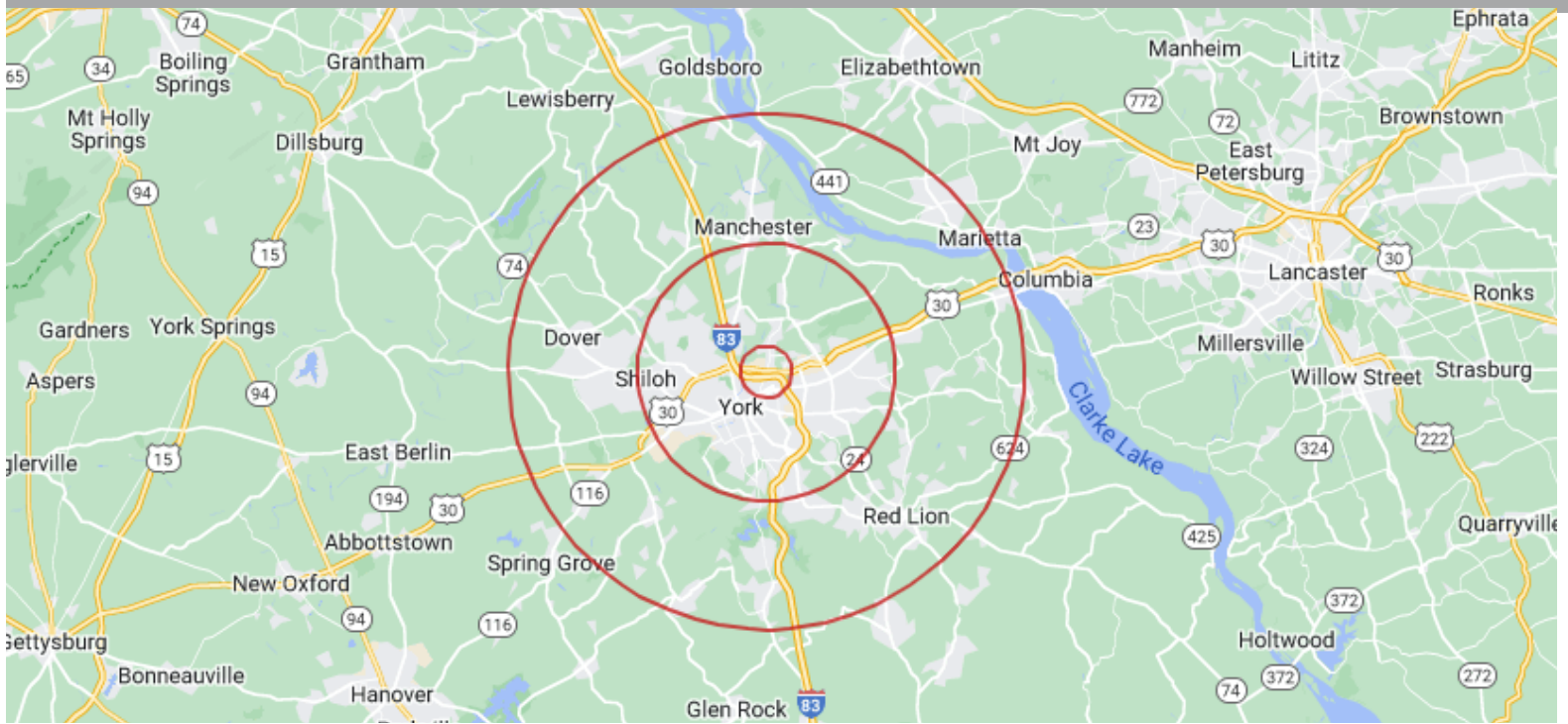
Dan Hawks
(717)-741-8707
dhawks@kinsleyproperties.com

Joe Caughy
(717)-741-8365
jcaughy@kinsleyproperties.com



Building Specifications:

Township	York County	Car Parking	315 Spaces
Zoning	General Industrial	Building Size	432,442 SF
Acreage	25 AC	Fire Protection	ESFR



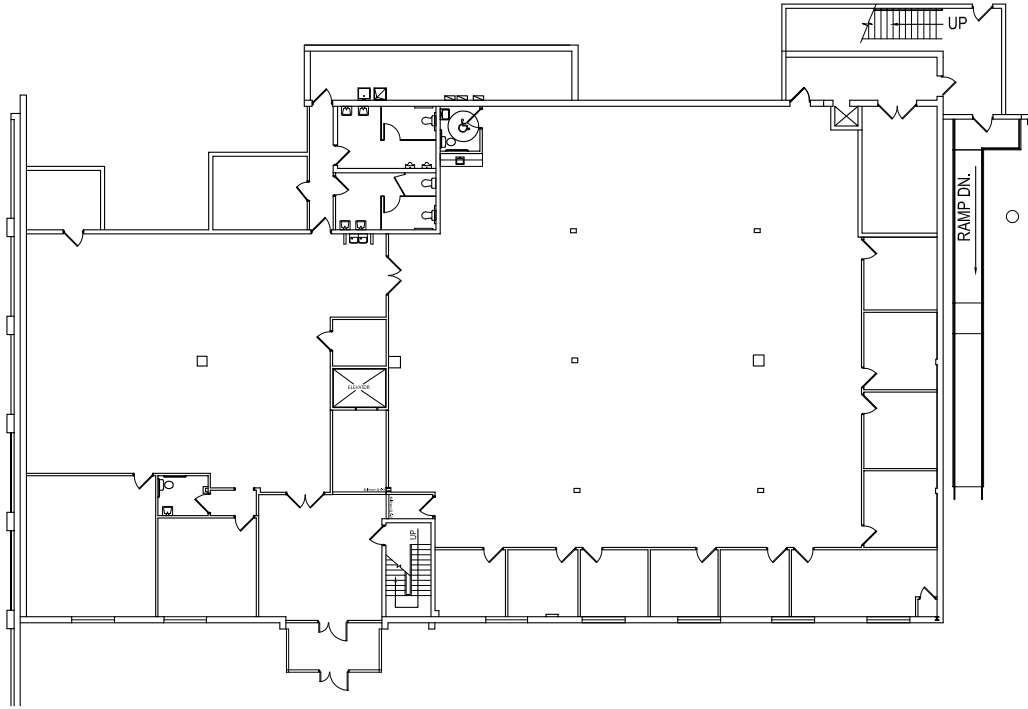
Distances to Cities:

Harrisburg, PA	26 miles	33 min
Baltimore, MD	57 miles	58 min
Philadelphia, PA	100 miles	1 hr. 50 min
New York, NY	184 miles	3 hrs.

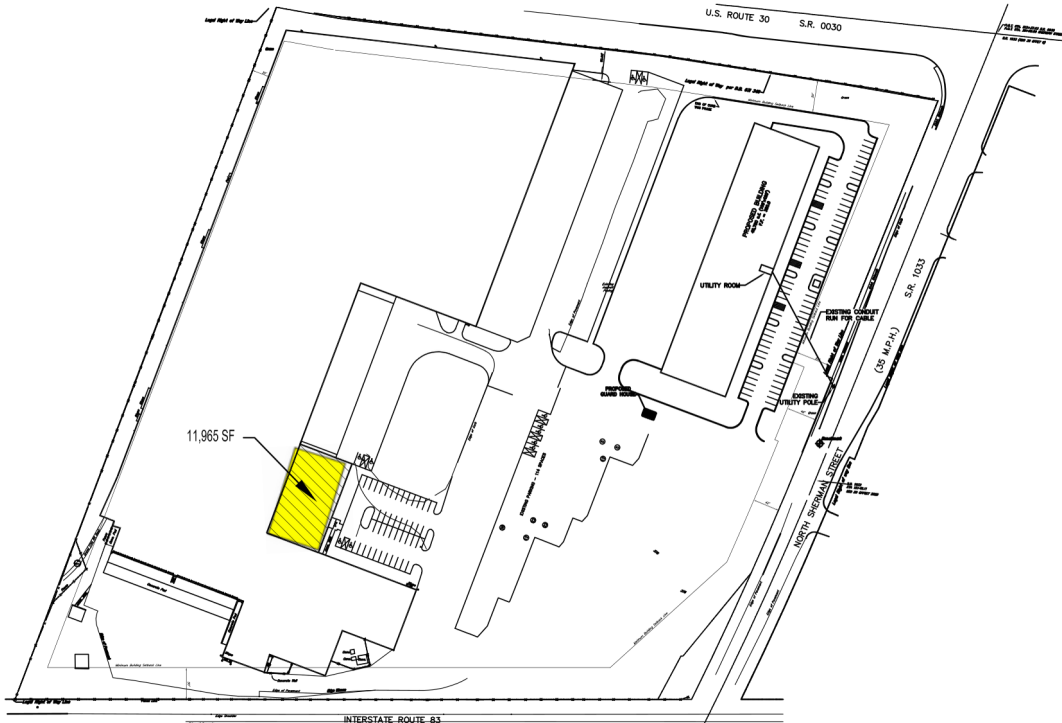
Labor Statistics:

	1 Mile:	5 Miles:	10 Miles:
Total Population	8,195	152,260	286,496
Labor Population	4,091	94,700	122,405
Median Household Income	44,527	61,641	67,169

1100 N SHERMAN ST
FIRST FLOOR PLAN
11,965 SF - "B" BUSINESS



1100 N SHERMAN ST
FIRST FLOOR
SITE PLAN



KINSLEY

PROPERTIES

About Kinsley Properties

Kinsley Properties is a privately held real estate development and management company. We develop new projects from the ground up and also acquire existing properties to hold long-term in our real estate investment portfolio. We develop and acquire different types of real estate in partnership with others or to be wholly owned. We have the capability, resources, and staff in order to facilitate and guide our clients through a successful real estate process. We work together with our clients in order to complete the entire real estate process from the beginning to the end. Starting from acquisition to development and design, construction, leasing, and asset management, we take pride in our product and work to provide all of these services in connection with the properties that are held in our portfolio. We have over 50 years of experience developing and managing a diverse portfolio of various property types across the mid-Atlantic region. We have a goal to provide solutions and high-quality customer service in order to ensure the success and growth of our clients, tenants, and partners. We believe in long-term relationships, collaboration, and teamwork because we are all in this together and we want to do what we can to ensure the entire team's success.

Mission:

WE PROVIDE REAL ESTATE SOLUTIONS THAT CREATE LASTING RELATIONSHIPS AND CLIENT SUCCESS.

Vision:

BE THE MOST RESOURCEFUL REAL ESTATE EXPERT.

Values:

OUR REPUTATION IS BUILT ON INTEGRITY.

WE DEVELOP PEOPLE.

WE'RE IN IT WITH YOU.

SHARED SUCCESS.

ALWAYS BE RESPONSIBLE.



DAN HAWKS

Director of Leasing

dhawks@kinsleyproperties.com

717-741-8707



JOE CAUGHY

Leasing & Marketing Associate

jcaughy@kinsleyproperties.com

717-741-8365

ADDRESS:

6259 Reynolds Mill Road
Seven Valleys, PA 17360