



BLDG A // SUITE 116 // FLOORPLAN

SUITE DATA:

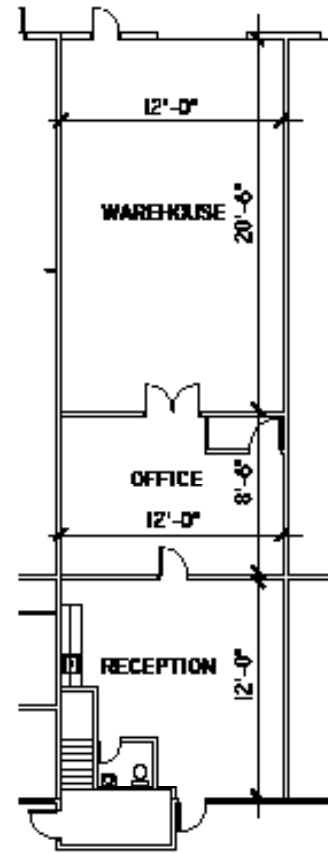
OFFICE AREA	1,035 SF
WAREHOUSE AREA	1,036 SF
TOTAL SUITE AREA	2,071 SF

BLDG. A // SUITE 116

» AVAILABLE SF: 2,071

Keith Bell
o. 303.260.4332
keith.bell@nmrk.com

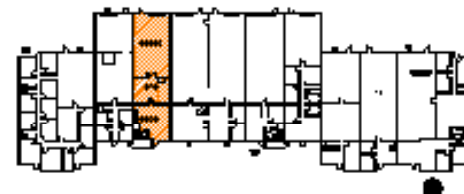
Newmark
1800 Larimer Street, Suite 1700
Denver, CO 80202
ngkf.com



SITE KEY PLAN:



BUILDING KEY PLAN:



14 INVERNESS DRIVE EAST
ENGLEWOOD, CO 80112