



## CENTRALLY LOCATED WAREHOUSE

7777 S Allen St, Midvale, UT 84047

### PROPERTY DESCRIPTION:

- Strategically Located within Central Salt Lake County
- Rare Fenced Parking Lot with Reserved Parking Stalls Exclusive to Unit
- 20 Foot Ceiling Height, May be Used for Racking
- Temperature Controlled Warehouse
- Large 12' x 12' Ground Level Garage Door
- Ideal for a Variety of Contractors, Light Product Showroom/Distribution, Storage Uses
- End-Cap Unit with Exterior Signage Capabilities
- Excellent Freeway Access

### LEASE RATE:

**\$3,375 per month**  
**(NNN)**

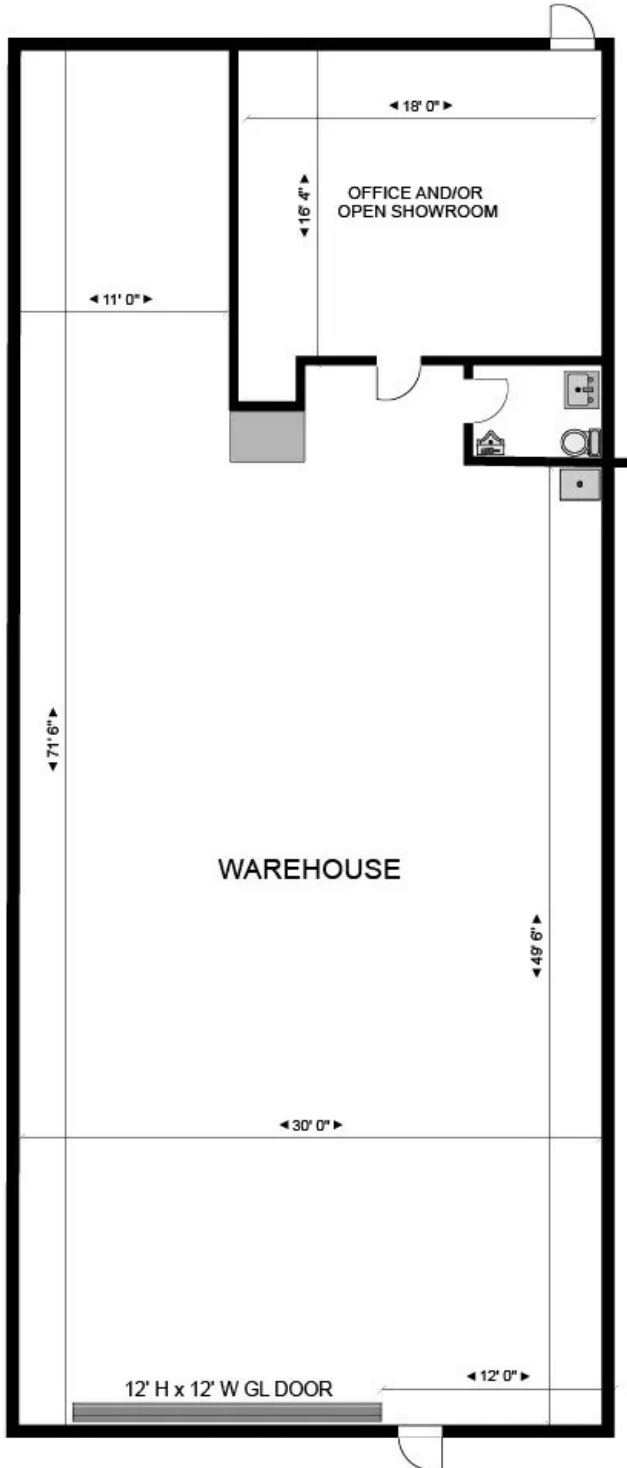
### PROPERTY DETAILS:

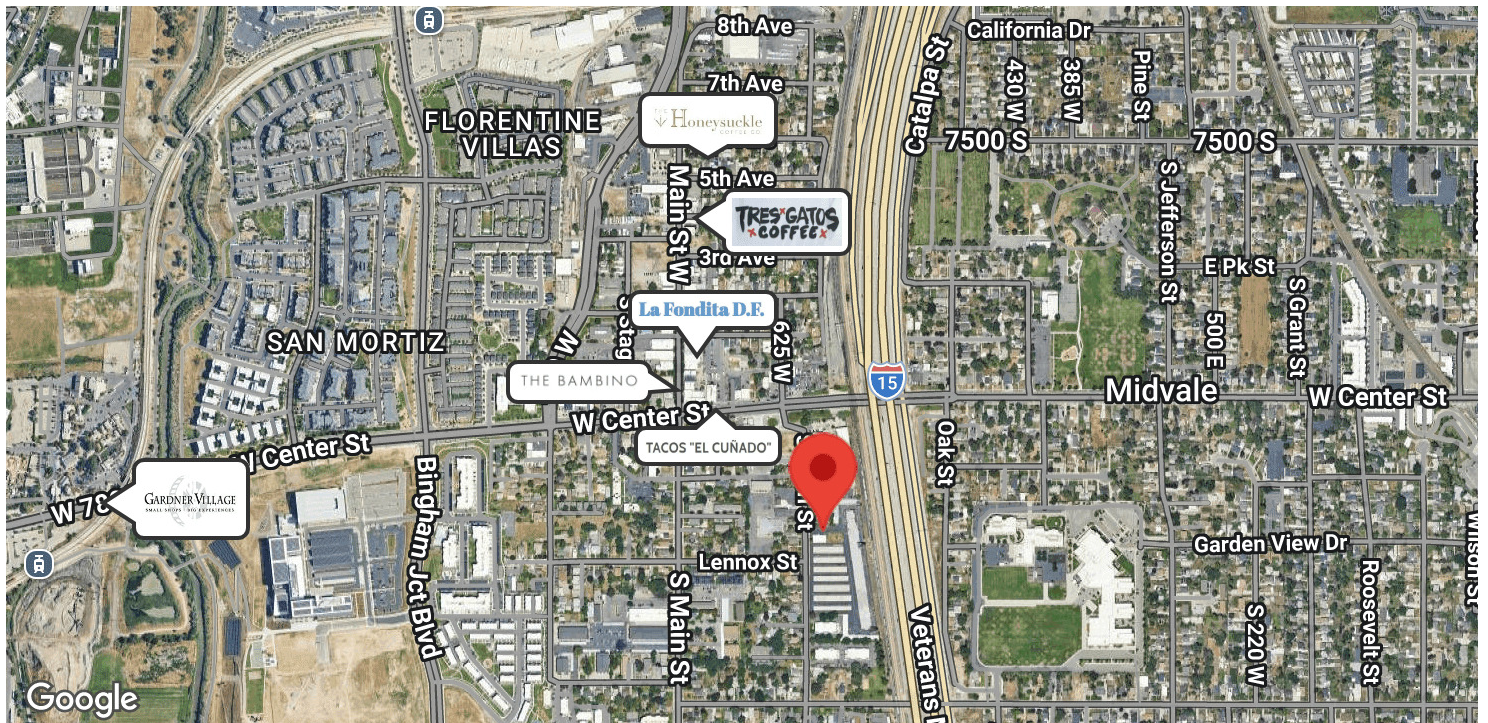
**2,160 SF**

**CHRIS METOS** (OWNER/AGENT)

801.879.7870  
chris@iproperties.com

51 East 400 South Suite 210  
Salt Lake City, UT 84111  
801.355.0600 | iproperties.com





**CHRIS METOS** (OWNER/AGENT)  
801.879.7870  
chris@iproperties.com

51 East 400 South Suite 210  
Salt Lake City, UT 84111  
801.355.0600 | iproperties.com