

# PROFESSIONAL OFFICE ENVIRONMENT

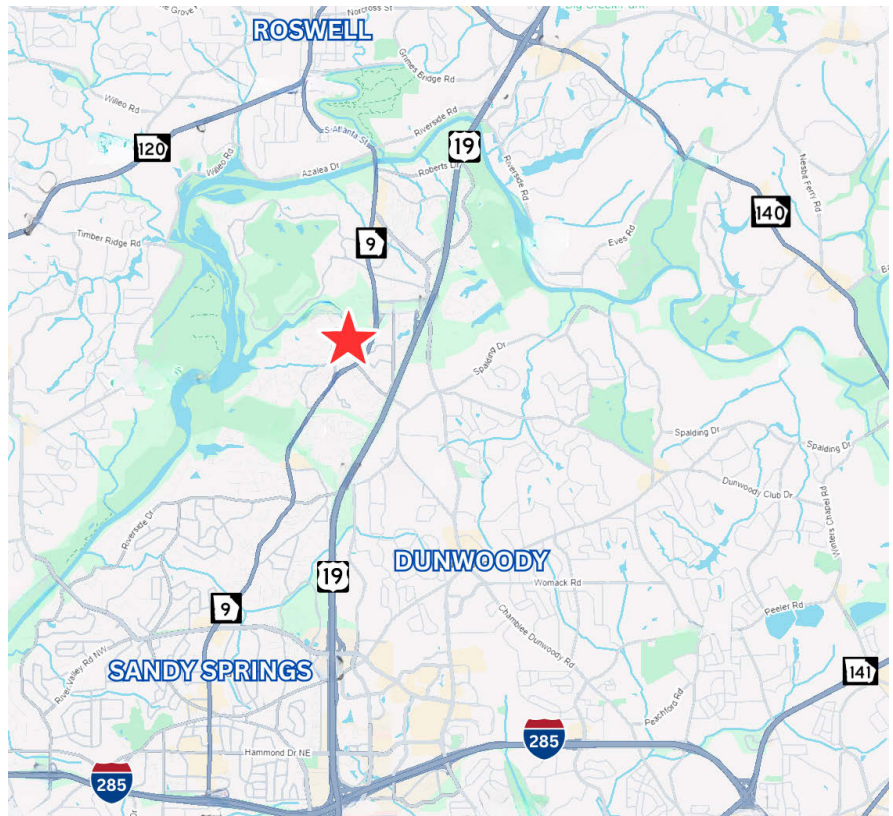
8100 ROSWELL RD, SANDY SPRINGS, GA 30350

# 1,286 SF FOR LEASE



## BUILDING PROFILE

- Space available: 1,286 sf
- Open floor plan
- Mature landscaping in campus setting
- Convenient parking at your door
- Excellent access to GA 400 & I-285
- Tenant controlled HVAC
- \$16.75/sf net of electric



**HAILEY**  
REALTY COMPANY  
SINCE 1989

*Every effort has been made to provide accurate information, but no liability is assumed for errors or omissions.*

900 Circle 75 Pkwy, Ste 525  
Atlanta, GA 30339  
Main 404-355-9300 | FAX 404-351-6329  
[www.HaileyRealty.com](http://www.HaileyRealty.com)

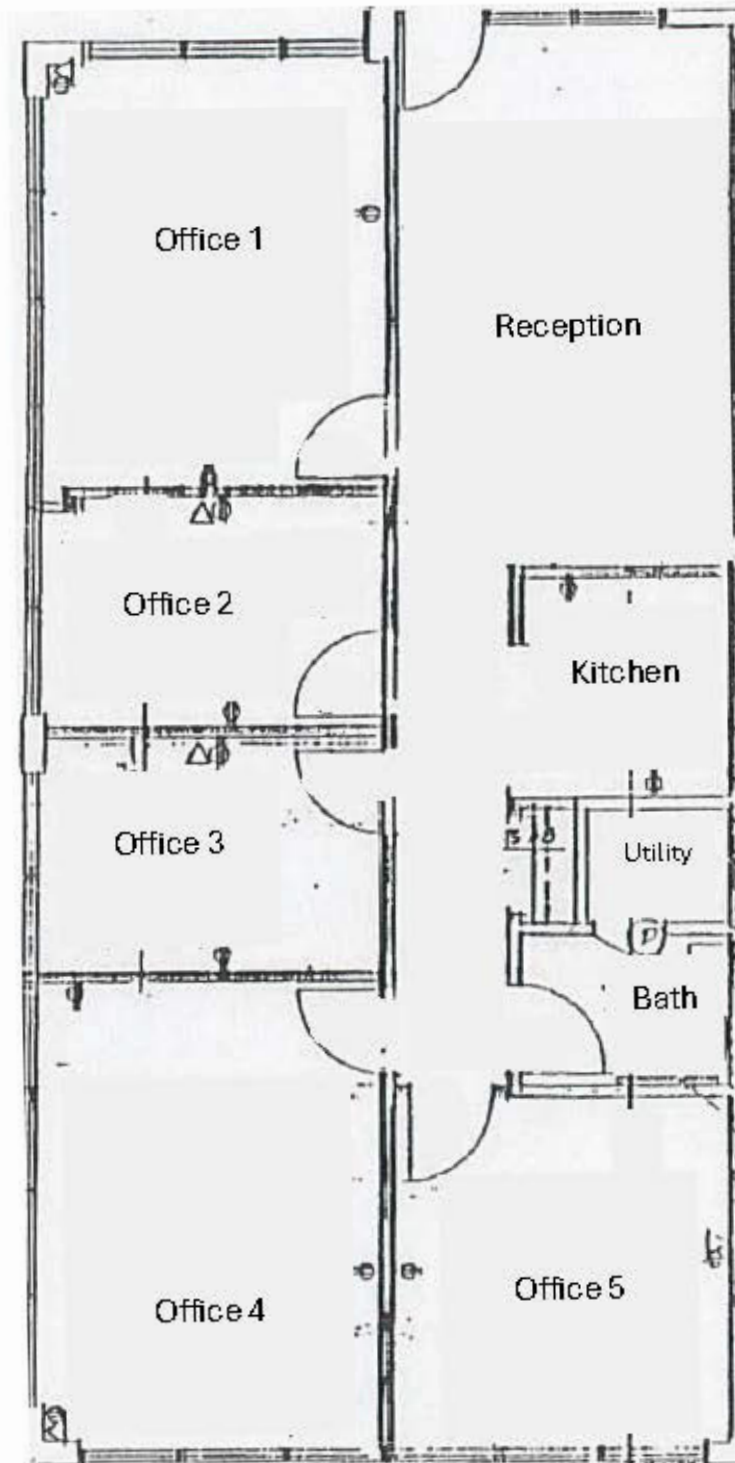
**HOWARD H. R. BOYD, SIOR**  
Office: 678-904-6800  
Cell: 404-229-6800  
[HBoyd@HaileyRealty.com](mailto:HBoyd@HaileyRealty.com)

**MICHAEL BECK, SIOR**  
Office: 678-904-6804  
Cell: 404-933-7938  
[MBeck@HaileyRealty.com](mailto:MBeck@HaileyRealty.com)

# PROFESSIONAL OFFICE ENVIRONMENT

8100 ROSWELL RD, SANDY SPRINGS, GA 30350

**1,286 SF**  
**FOR LEASE**



*Every effort has been made to provide accurate information,  
but no liability is assumed for errors or omissions.*

**HAILEY**  
REALTY COMPANY

SINCE 1958

900 Circle 75 Pkwy, Ste 525  
Atlanta, GA 30339  
Main 404-355-9300 | FAX 404-351-6329  
[www.haileyrealty.com](http://www.haileyrealty.com)

For more information please contact:  
**HOWARD H. R. BOYD, SIOR**  
**678-904-6800**  
[hboyd@haileyrealty.com](mailto:hboyd@haileyrealty.com)