

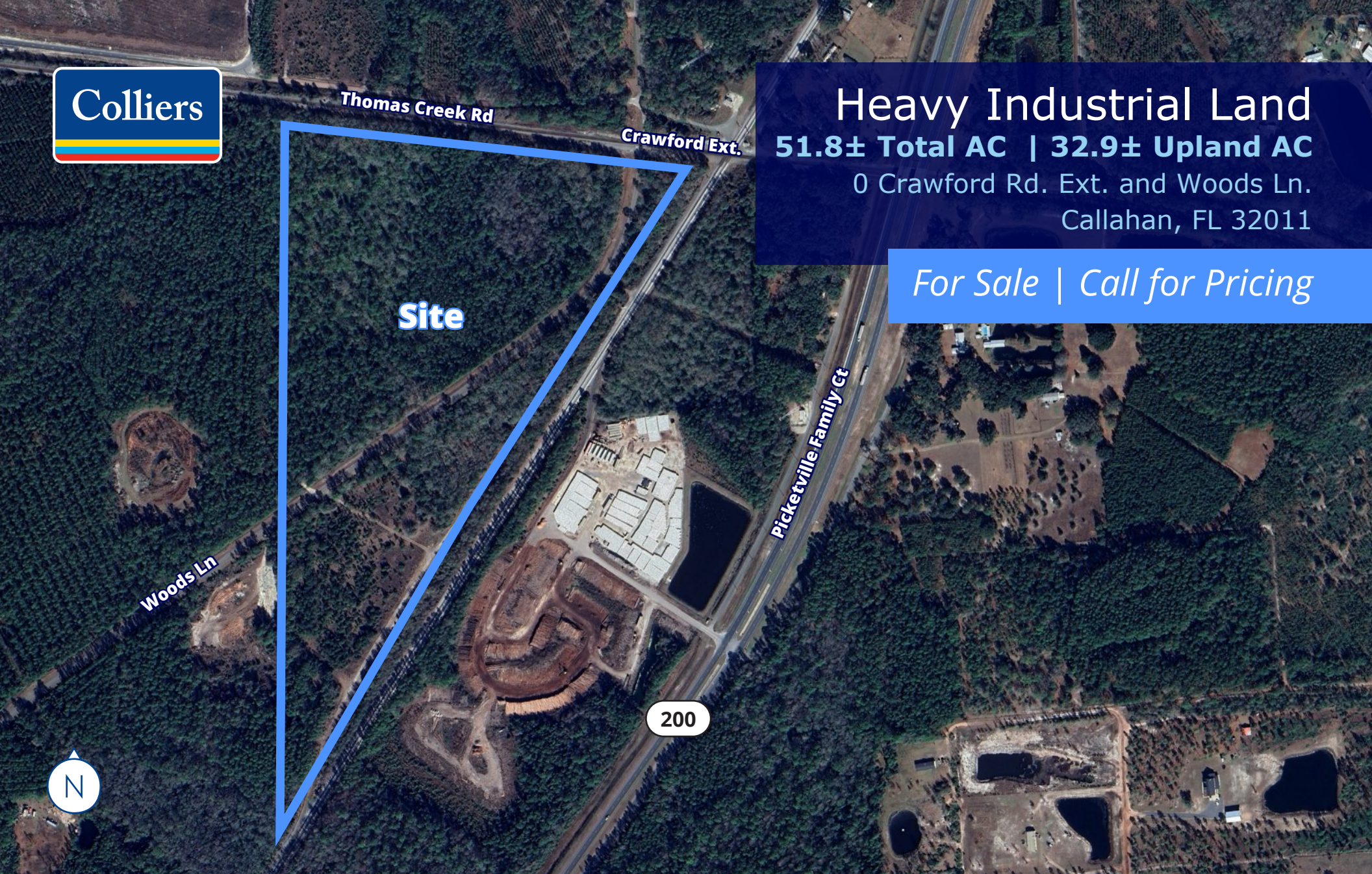


Heavy Industrial Land

51.8± Total AC | 32.9± Upland AC

0 Crawford Rd. Ext. and Woods Ln.
Callahan, FL 32011

For Sale | Call for Pricing



Site



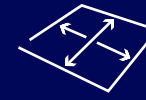
Eric Bumgarner, CCIM
Executive Vice President
+1 904 861 1152
eric.bumgarner@colliers.com

Michael Cassidy
Associate Vice President
+1 904 861 1120
michael.cassidy@colliers.com

Gordon Olson
Senior Associate
+1 904 861 1124
gordon.olson@colliers.com

Colliers
76 S. Laura Street, Suite 1500
Jacksonville, FL 32202
colliers.com/jacksonville

PROPERTY Overview



51.8± AC



Heavy Industrial (IH)

Address: 0 Crawford Rd Ext and 0 Woods Ln
Callahan, FL 32011

Total acres 51.8±

of parcels: 3

RE #: 15-1N-24-2180-1206-0000
14-1N-24-2180-0071-0010
14-1N-24-2180-0479-0010

Total est. wetland impacts: 18.9±

Est. wetland acres to be mitigated: 13.93±

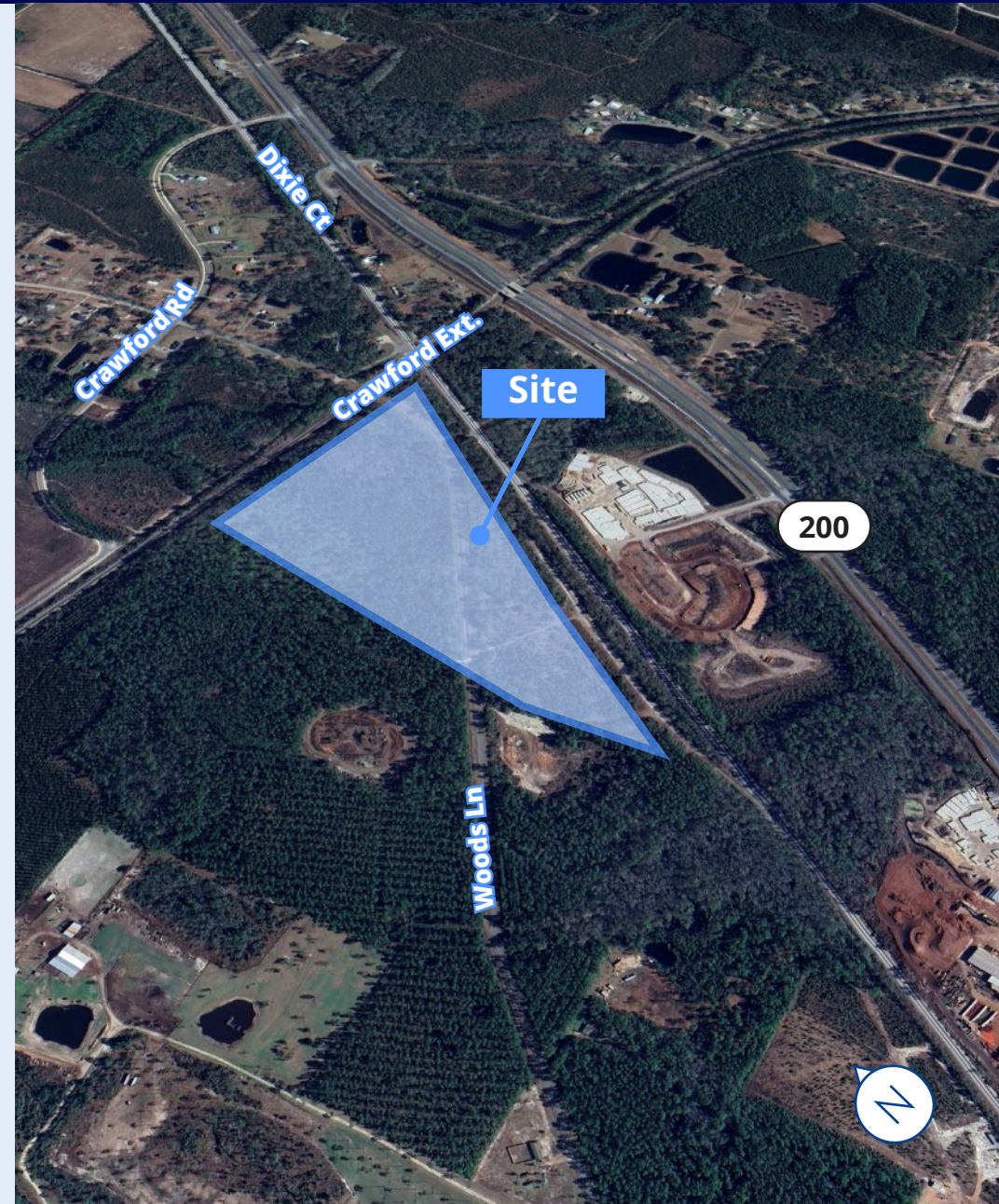
Total upland acres: 32.9±

Rail served: CSX
Potential connection to
Norfolk Southern

Status: Green site

Utilities: Available: Can be extended to site

Zoning: Heavy Industrial



PROPERTY
Parcel Map



[Click to view location](#)



Parcel 1

- 15-1N-24-2180-1206-0000
- 31.7± AC

Parcel 2

- 14-1N-24-2180-0071-0010
- 18.5± AC

Parcel 3

- 14-1N-24-2180-0479-0010
- 1.7± AC

PROPERTY
Wetlands Map



Submarket Details

Nassau County

It is expected that the population of Yulee will increase significantly in the coming decade as development continues in the East Nassau Community Planning Area, a long-term master-planned development for 24,000 acres between I-95 and US 17. Yulee is an appealing choice for those wanting to be close to the beaches and major roads connecting Nassau to Jacksonville to the south and Georgia to the north.

Recent Developments

Wildlight is a 2,900 Acre mixed use development in Nassau County consisting of homes, apartments, retail, medical, office and other commercial uses. Newly constructed single family rental homes and luxury apartments totaling 550 housing units. Located along I-95 and recently expanded A1A, Wildlight is 20 minutes from Amelia Island, downtown Jacksonville and Jacksonville International Airport.

Pattillo Industrial RE's Wildlight Commerce Park is a 130 Acre site neighboring Wildlight. Phase 1 will comprise of one 68,000 SF spec warehouse and will offer several build to suit opportunities.

Source: <https://www.islandchamber.com/yulee/>

Crawford Diamond Industrial Park offers a 400 acre industrial park with dual Class I rail frontage (CSX and Norfolk Southern) and major power infrastructure from FPL. Strategically located near three ports, two interstates, and a large skilled workforce, including 3,000 annually separating military personnel. The site features 30 day local permit processing, low local tax rate and no state income tax.

Source: <https://nassauflorida.com/site-selection/crawford-diamond/>



2025 Population
102,881



2030 Population
116,406



2025 Avg. Home Value
\$452,397



2025 HH Income
\$124,536

Source: ESRI Business Analyst

Distances To:

US 301
0.9 mi

US 23
5.7 mi

I-295
13.1 mi

CSX
17.5 mi

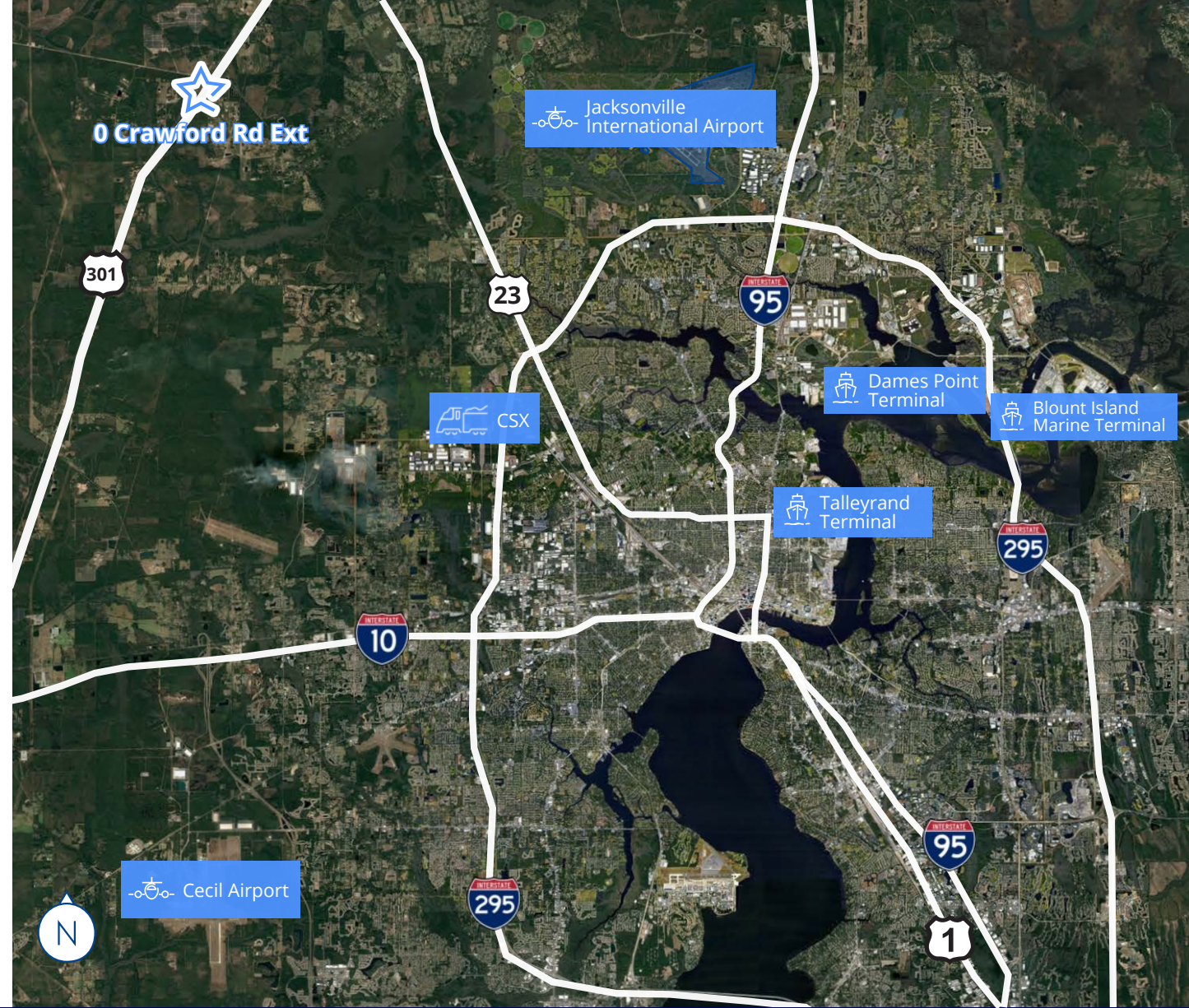
I-10
18.8 mi

JIA
18.9 mi

I-95
22.1 mi

Talleyrand Terminal
22.8 mi

Dames Point Terminal
27.3 mi



Eric Bumgarner, CCIM
Executive Vice President
+1 904 861 1152
eric.bumgarner@colliers.com

Michael Cassidy
Associate Vice President
+1 904 861 1120
michael.cassidy@colliers.com

Gordon Olson
Senior Associate
+1 904 861 1124
gordon.olson@colliers.com



This document/email has been prepared by Colliers for advertising and general information only. Colliers makes no guarantees, representations or warranties of any kind, expressed or implied, regarding the information including, but not limited to, warranties of content, accuracy and reliability. Any interested party should undertake their own inquiries as to the accuracy of the information. Colliers excludes unequivocally all inferred or implied terms, conditions and warranties arising out of this document and excludes all liability for loss and damages arising there from. This publication is the copyrighted property of Colliers and /or its licensor(s). © 2025. All rights reserved. This communication is not intended to cause or induce breach of an existing listing agreement.

Colliers
76 S. Laura Street, Suite 1500
Jacksonville, FL 32202
www.colliers.com/jacksonville