



55

TEMPLE ROW

# YOUR OWN FRONT DOOR TO THE CBD

A rare opportunity to occupy 13,117 sq ft of modern, move-in ready offices in the heart of the city centre.

[Find out more >](#)

BIRMINGHAM OFFICE SPACE TO LET

# TEMPLE ROW - A HEADQUARTERS ADDRESS



**With its own front door, bespoke open-plan layout and integrated meeting facilities, the building delivers a true headquarters feel - without the cost or complexity usually attached to one.**

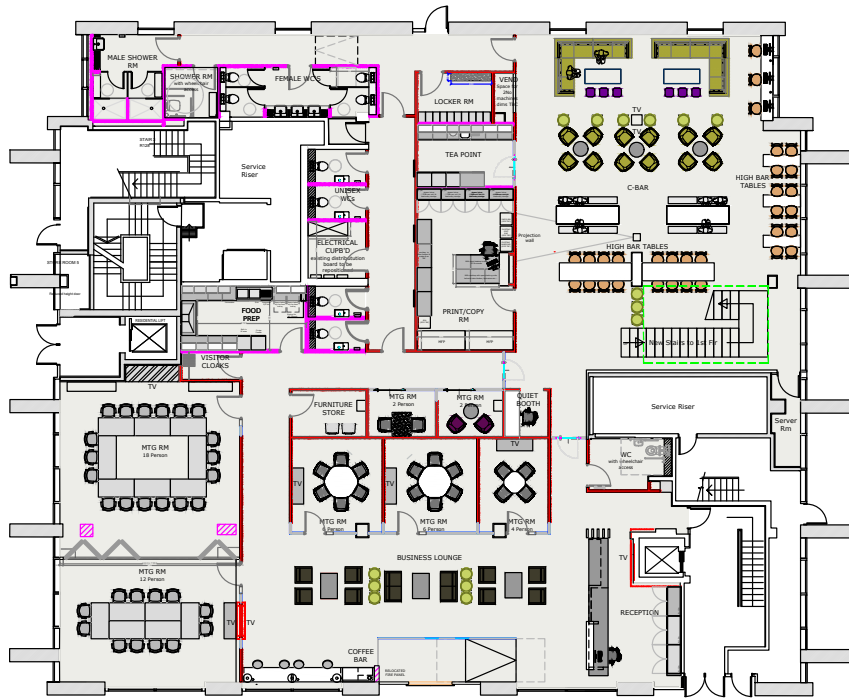
This is a rare opportunity to secure a self-contained office in one of the city's most established business addresses.

The existing fit-out can be readily adapted and may also lend itself to alternative uses.



# 13,117 SQ FT MODERN OPEN PLAN

GROUND FLOOR 6,496 SQ FT



This landmark building offers a range of impressive features and amenities, including its own front door and street presence in one of the city's foremost businesses locations.

The bespoke, welcoming and open floorplans allow for the full range of configurations including meeting rooms, client space and lounge amenities, all self-contained with the security and appeal of a dedicated space.

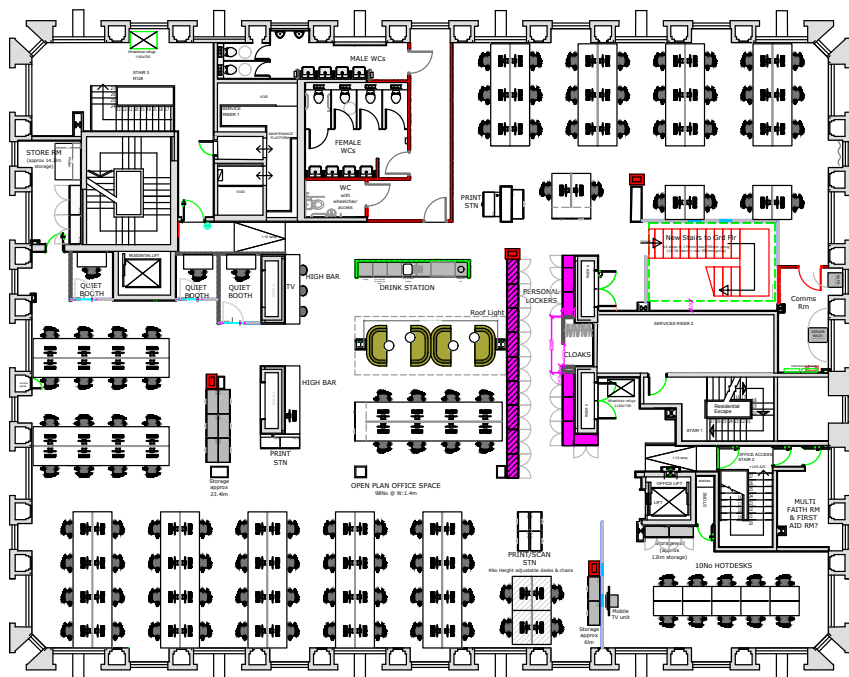


Self-contained headquarters office



Excellent branding opportunities

FIRST FLOOR 6,621 SQ FT



Bespoke open plan layout



Meeting, amenity & collaboration spaces



May suit other uses  
(subject to planning)

\*Furniture is indicative only

# PRIME LOCATION



**Situated close to St Philip's Cathedral and within easy walking distance of Birmingham New Street Station, 55 Temple Row offers excellent connectivity and convenience.**

Temple Row is one of Birmingham's most established business addresses, surrounded by major offices, professional firms, and a wide range of restaurants, cafés, and amenities, placing occupiers at the heart of the city's professional community.

- |  |                                     |
|--|-------------------------------------|
| <b>01</b> The Ivy                      | <b>12</b> The Colmore               |
| <b>02</b> Fumo                         | <b>13</b> 24 Stories                |
| <b>03</b> San Carlo                    | <b>14</b> Pret A Manger             |
| <b>04</b> Las Iguanas                  | <b>15</b> Regina's Bar & Restaurant |
| <b>05</b> The Head of Steam            | <b>16</b> Hotel du Vin              |
| <b>06</b> Katie O'Brien's Irish Tavern | <b>17</b> The Grand Hotel           |
| <b>07</b> Cosy Club                    | <b>18</b> Gusto                     |
| <b>08</b> The Lost & Found             | <b>19</b> The Alchemist             |
| <b>09</b> Blank Street Coffee          | <b>20</b> 200 Degrees Coffee Shop   |
| <b>10</b> Old Joint Stock              | <b>21</b> Pasture                   |
| <b>11</b> Adam's Restaurant            | <b>22</b> Costa Coffee              |

# 55 TEMPLE ROW

## Ready to be yours...

For all enquiries please contact:



savills

**Jonathan Ottewell**

+44 (0)7972 000 150  
jottewell@savills.com

**Ben Thacker**

+44 (0)7917 218 244  
Ben.Thacker@savills.com

Savills for themselves and for the vendors or lessors of this property whose agents they are give notice that: (i) the particulars are set out as a general guideline only for the guidance of intending purchasers or lessees and do not constitute, nor constitute part of an offer or contract. (ii) all descriptions, dimensions, references to condition and necessary permission for use and occupation, and other details are given in good faith and are believed to be correct but any intending purchasers or tenants should not rely on them as statements or representation of fact but satisfy themselves by inspection or otherwise as to the correctness of each of them. (iii) no person in the employment of Savills has any authority to make or give any representation or warranty whatever in relation to this property. (iv) all rentals and prices are quoted exclusive of VAT. March 2026. Crafted by Core. core-marketing.co.uk 0121 232 5000.

Asset Managed by:



CONTACT