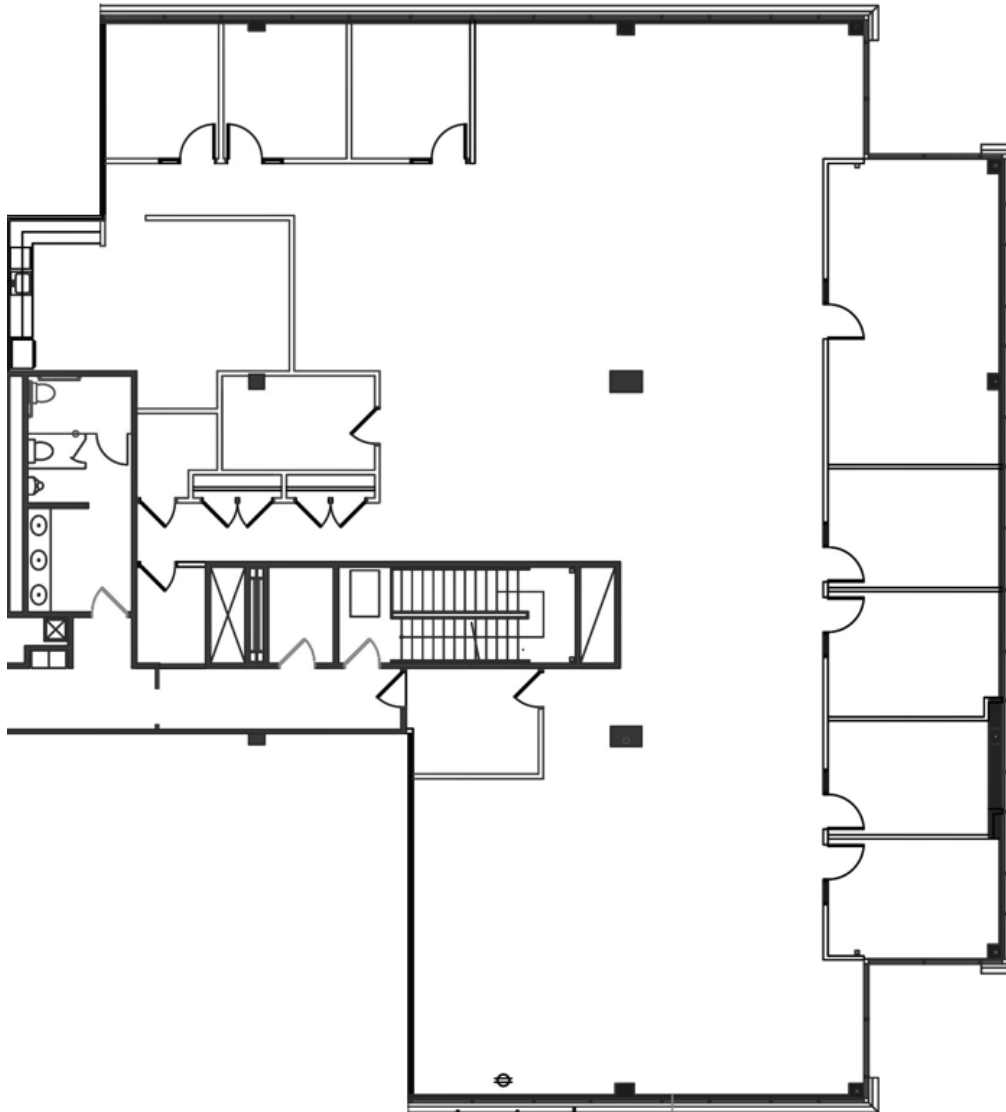


SUITE 410 | 6,821 SF

2250 POINT BLVD | ELGIN, IL



SPACE NOTES

- Generous Build-Out Allowance
- Building Conference Room
- Modern Common Areas
- Convenient Access to I-90



JOHN MILLNER

630.480.6342

JMillner@VersaRES.com

RYAN MOEN

630.480.6346

RMoen@VersaRES.com

**1 MID AMERICA PLAZA, 3RD FLOOR
OAKBROOK TERRACE, IL 60181
630.480.6413**

EXCLUSIVELY LISTED BY

VERSA
REAL ESTATE SERVICES