

# Drive-thru Retail Property

Located at high trafficked interchange

1201 N. 14<sup>TH</sup> St  
Leesburg, FL 34748  
[www.cbre.com/orlando](http://www.cbre.com/orlando)



## Property Overview

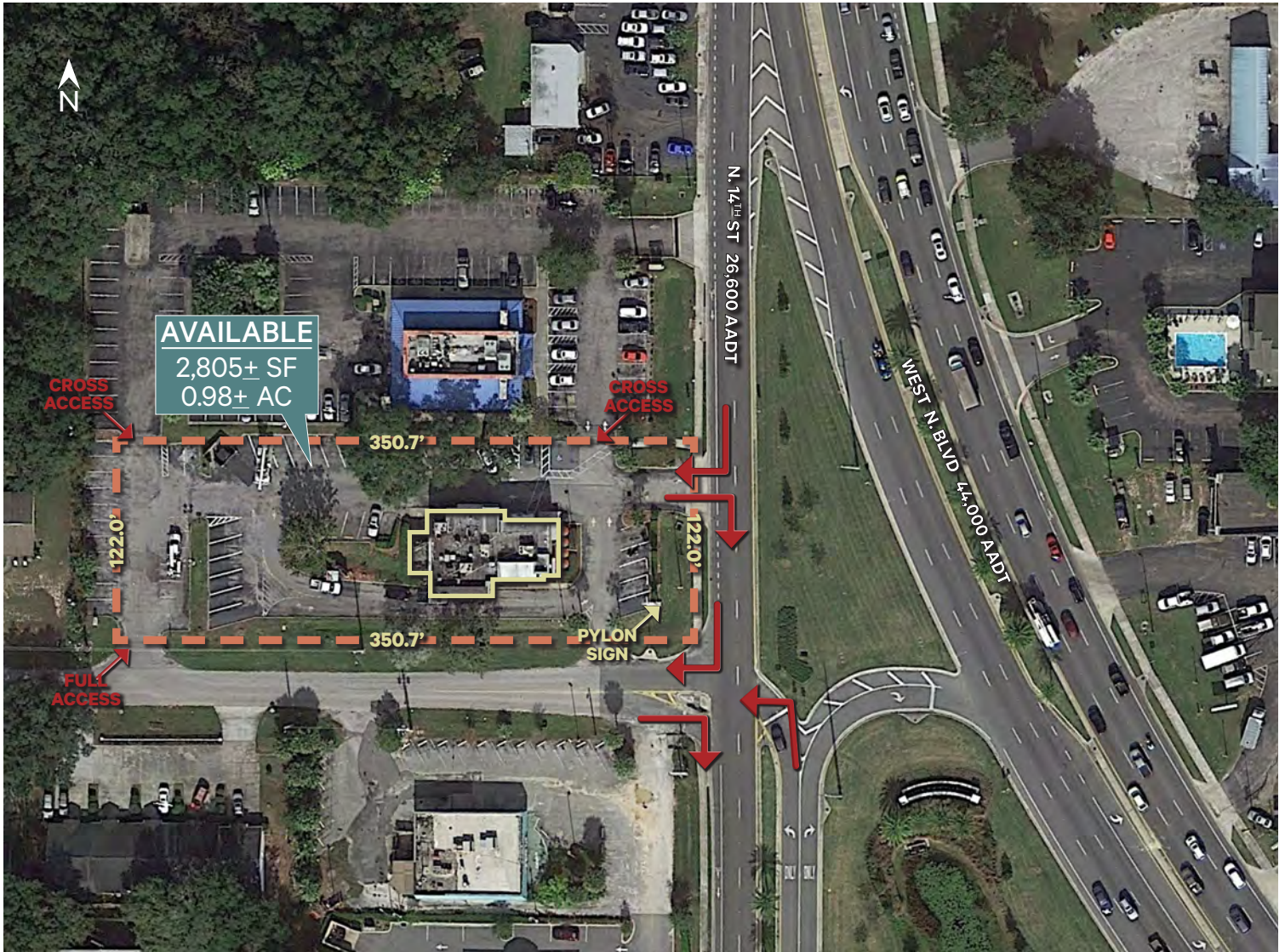
- + Building: 2,805± SF
- + Land: 0.98± AC
- + Situated along highly trafficked interchange
- + Excellent visibility and frontage along N. 14<sup>TH</sup> St (26,600 AADT)

2022 Estimated Demographics	1 Mile	3 Miles	5 Miles
2022 Population	6,579	28,773	56,649
Median Age	40.1	47.4	50.7
Daytime Population	9,253	35,974	59,547
Businesses	536	1,808	2,331
Average Household Income	\$54,909	\$64,600	\$76,966

# Micro Aerial



# Aerial | Parcel



## Contact Us

### Cabot Jaffee

First Vice President

+1 407 404 5051

[cabot.jaffee@cbre.com](mailto:cabot.jaffee@cbre.com)

© 2022 CBRE, Inc. All rights reserved. This information has been obtained from sources believed reliable, but has not been verified for accuracy or completeness. You should conduct a careful, independent investigation of the property and verify all information. Any reliance on this information is solely at your own risk. CBRE and the CBRE logo are service marks of CBRE, Inc. All other marks displayed on this document are the property of their respective owners, and the use of such logos does not imply any affiliation with or endorsement of CBRE. Photos herein are the property of their respective owners. Use of these images without the express written consent of the owner is prohibited.