

LEGEND

PARTNERS ■■■■

PARTNER **XTEAM**
RETAIL ADVISORS



LUMA

Tess Argyle

801.556.0540

targyle@legendllp.com

Chloe Cypers

801.644.6299

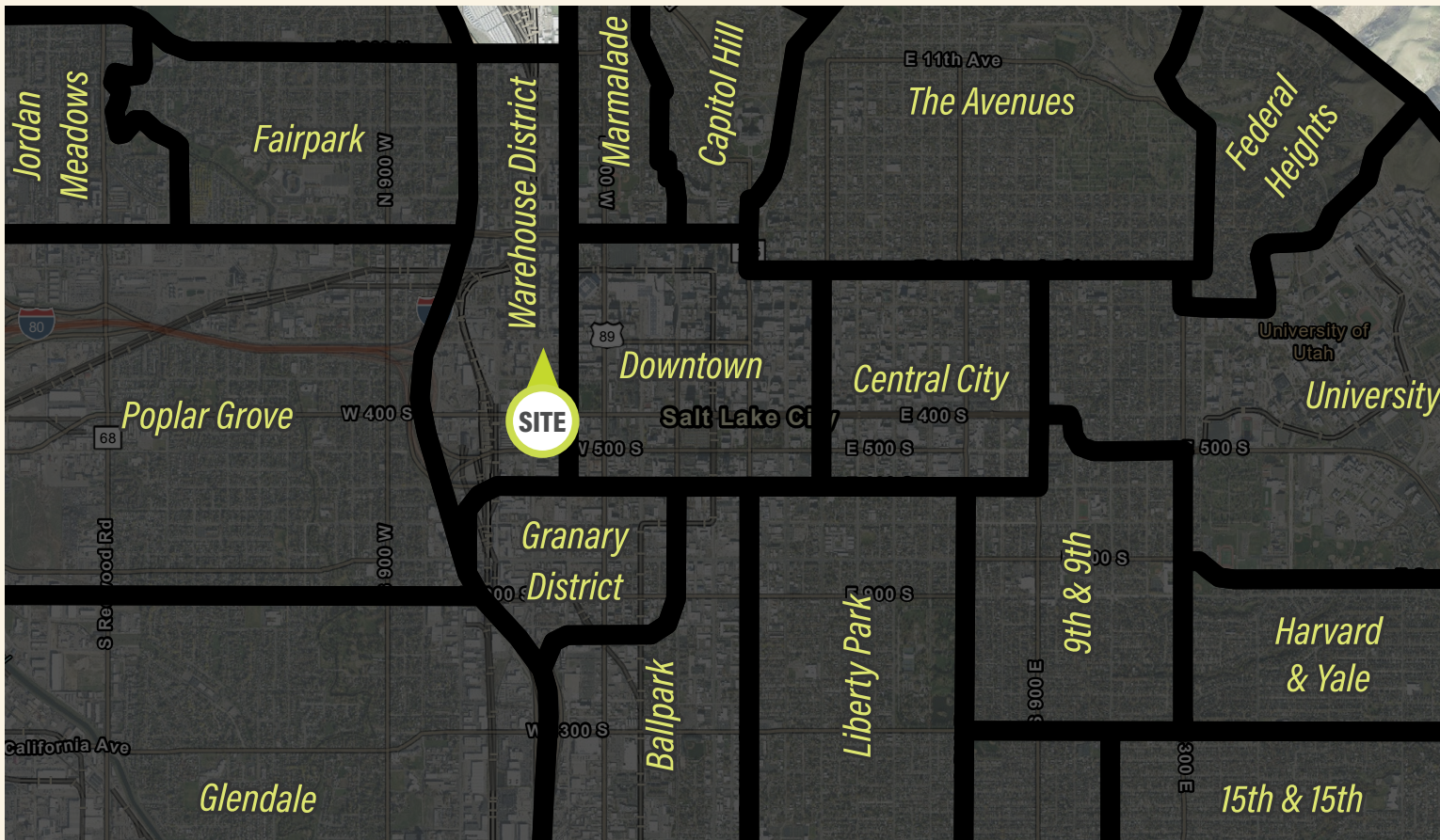
ccypers@legendllp.com

Tanner Olson

801.930.6752

tolson@legendllp.com





DEMOGRAPHICS

	1 MILE	3 MILE	5 MILE
2023 EST. POPULATION	18,388	137,307	232,016
2028 PROJECTED POPULATION	19,852	144,743	242,403
2023 EST. DAYTIME POPULATION	40,810	104,608	212,824
2023 EST. AVG HH INCOME	\$83,264	\$104,937	\$114,228
2023 EST. HOUSEHOLDS	9,189	60,819	96,488
2023 EST. BUSINESSES	2,445	7,782	14,444

HIGHLIGHTS

- NEW UPSCALE APARTMENT COMPLEX
- 2,750 SF RETAIL FOR LEASE
- AVAILABLE AUGUST 13, 2024
- 4,329 UNITS PLANNED OR UNDER CONSTRUCTION IN IMMEDIATE AREA*

*Source: Costar Multifamily Data November 2023

Chloe Cypers

801.644.6299
ccypers@legendllp.com

Tess Argyle

801.556.0540
targyle@legendllp.com

Tanner Olson

801.930.6752
tolson@legendllp.com

LEGEND
PARTNERS

www.legendllp.com • 801.930.6750
2180 S 1300 E, Suite 240 | Salt Lake City, UT



SITE

Chloe Cypers

801.644.6299
ccypers@legendllp.com

Tess Argyle

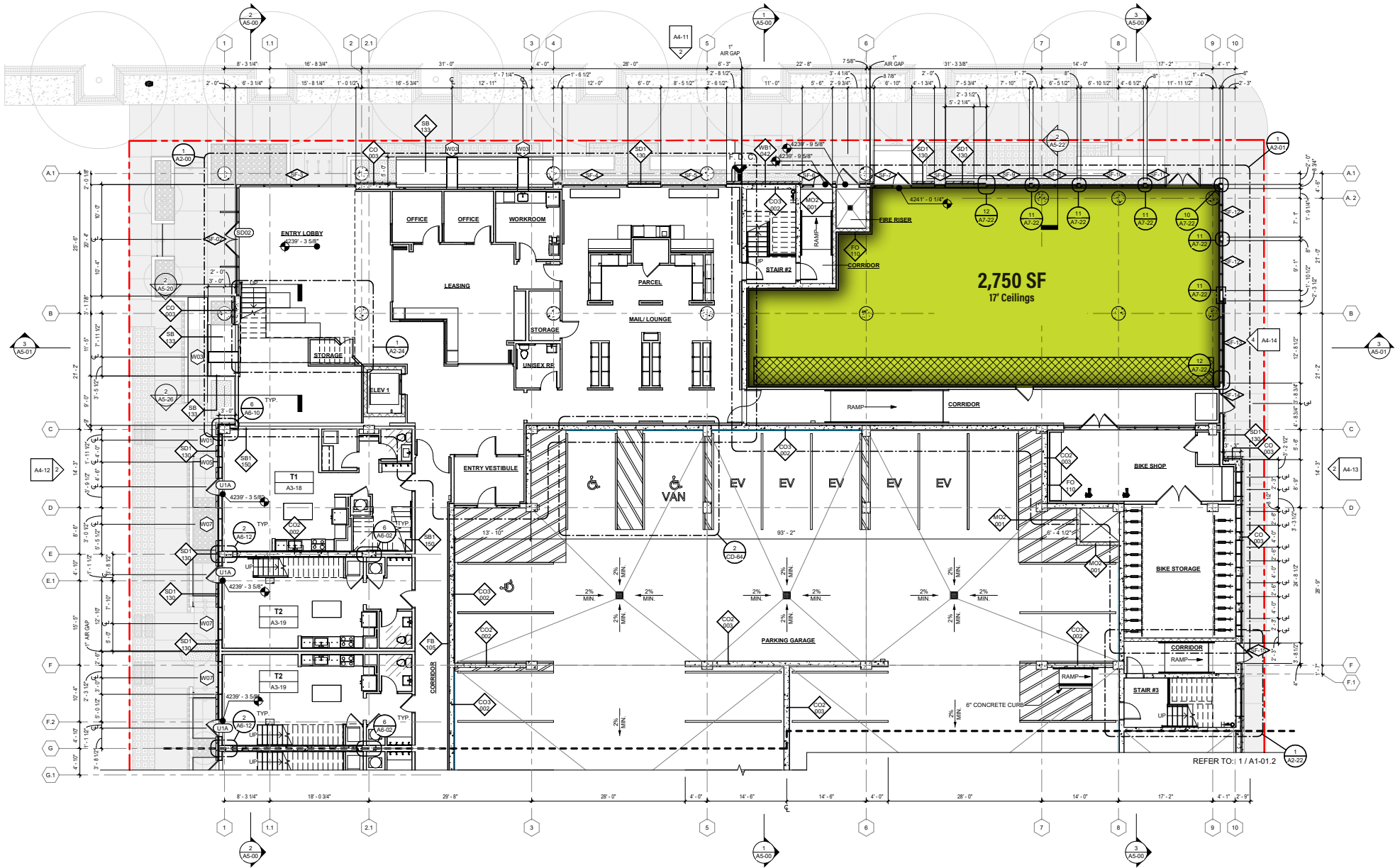
801.556.0540
targyle@legendllp.com

Tanner Olson

801.930.6752
tolson@legendllp.com

LEGEND
PARTNERS

www.legendllp.com • 801.930.6750
2180 S 1300 E, Suite 240 | Salt Lake City, UT



Chloe Cypers 801.644.6299 ccybers@legendllp.com
Tess Argyle 801.556.0540 targyle@legendllp.com
Tanner Olson 801.930.6752 tolson@legendllp.com

LEGEND
 PARTNERS

www.legendllp.com • 801.930.6750
 2180 S 1300 E, Suite 240 | Salt Lake City, UT