

# FOR LEASE

## Westridge Mall

WEST SIDE RETAIL - ELLIS ROAD CORRIDOR

8605 West 26th Street | Sioux Falls, SD 57106



### SIZE

1,787 sqft



### PRICE

\$14.00 psf (NNN)

Estimated NNN: \$5.50 psf



### LOCATION

Located along the rapidly developing Ellis Road Corridor, this site is near schools and surrounded by thriving retail destinations, townhomes, single-family homes, and modern apartments.



### T.I.A.

Negotiable



### LAYOUT

Formerly a karate studio, this space offers an open retail floor, one office, a private restroom, and a shower room.



### AREA TENANTS

Shenanigans Sports Bar & Grill, Edward Jones, Lewis, Sanford Acute Care, Casey's, Farm, Healing Touch Massage, Fit Body Boot Camp, Fareway Meat & Grocery, Risen Hope Baptist Church, Valentino's Pizza, Dollar Tree, McDonald's, Valvoline, Starbucks, Taco Bell

Information deemed reliable, but not guaranteed.

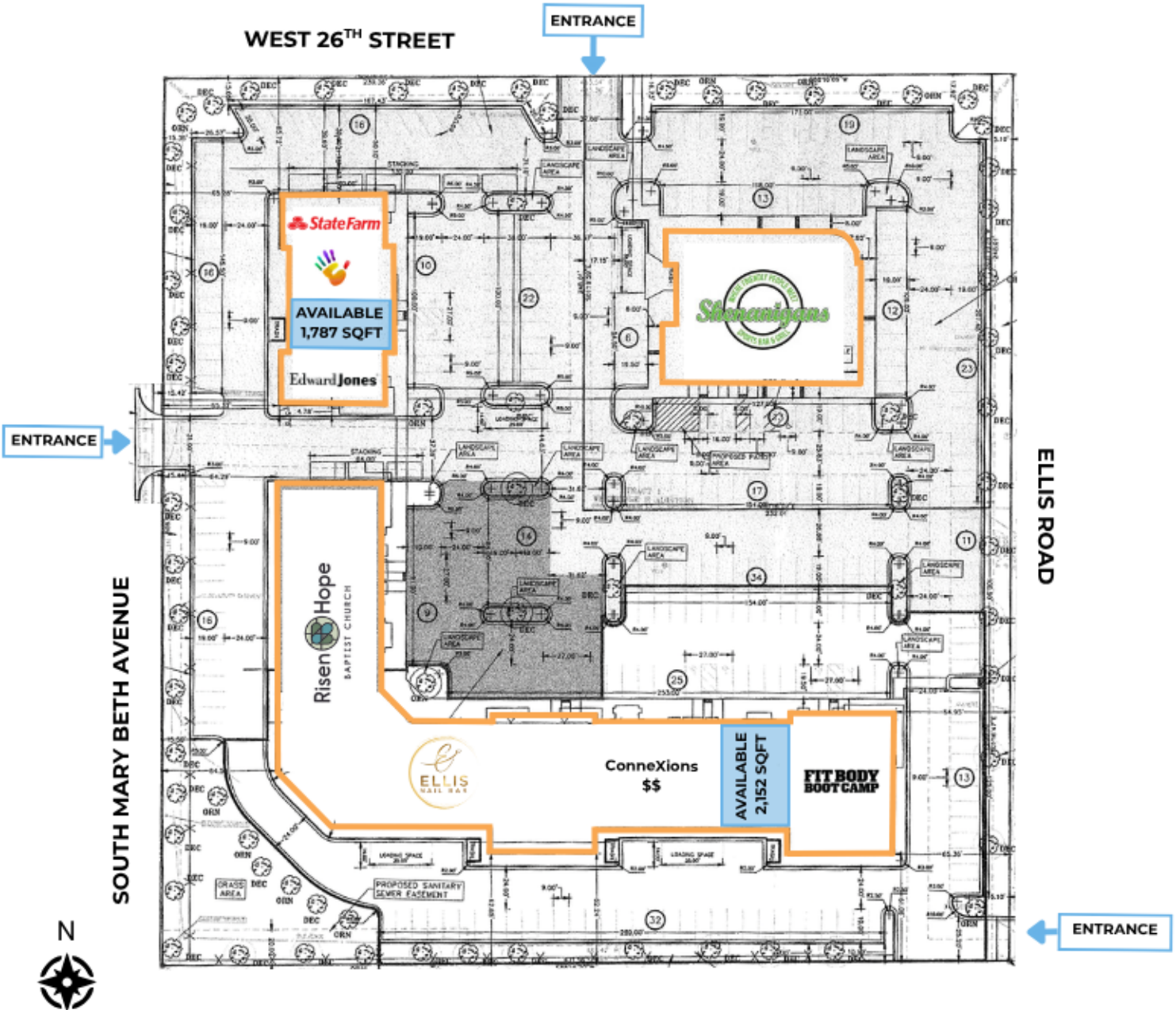
# FOR LEASE

## Area Map Westridge Mall



FOR  
LEASE

Site Map  
Westridge Mall



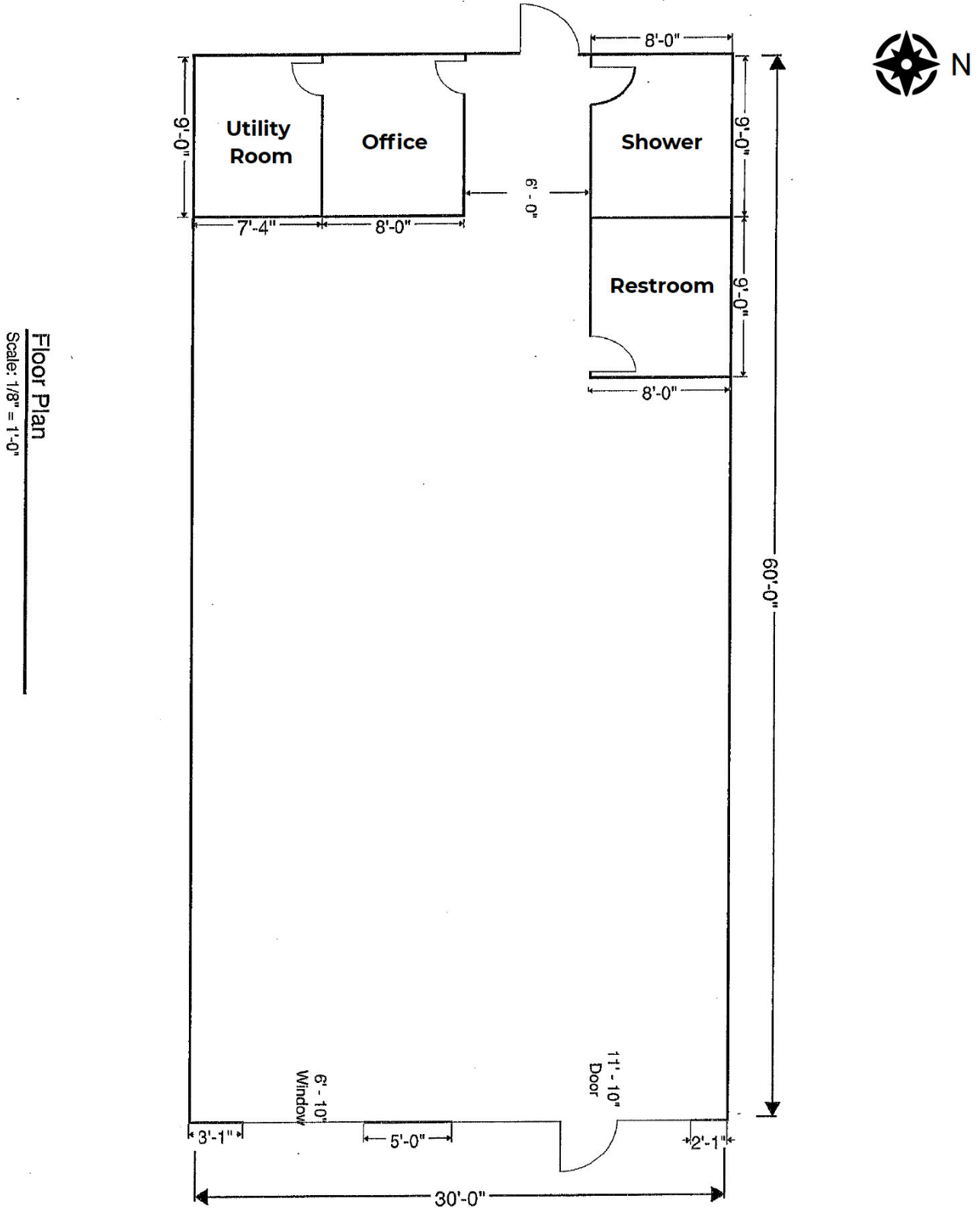
FOR  
LEASE

*Building Floor Plan*  
**Westridge Mall**



FOR  
LEASE

Floor Plan  
Westridge Mall

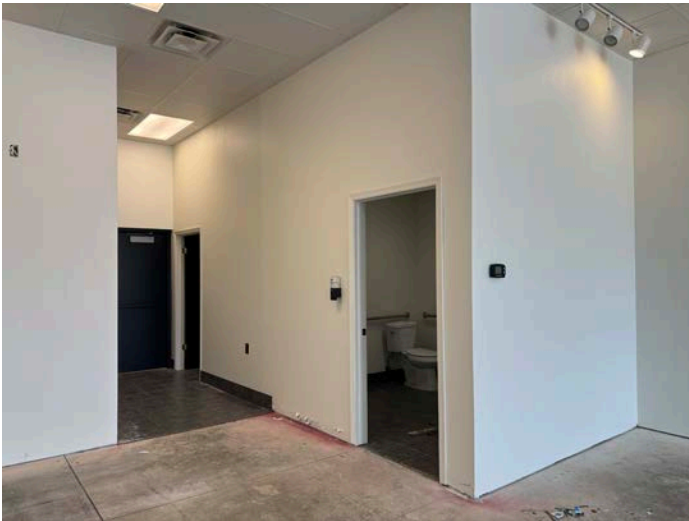


Floor Plan  
Scale: 1/8" = 1'-0"



**FOR  
LEASE**

*Photos*  
**Westridge Mall**



**FOR  
LEASE**

*Photos*  
**Westridge Mall**

