

46029 - 46155 FIVE MILE RD  
PLYMOUTH/TWP., MICHIGAN

HI-TECH FOR LEASE

1,780 & 3,250 Square Feet Available



**SIGNATURE  
ASSOCIATES**  
KNOW SIGNATURE | KNOW RESULTS

## PLYMOUTH TECHNOLOGY CENTER



### PROPERTY FEATURES

- 1,780 & 3,250 square feet available
- Units offers main road visibility and signage
- Centrally located in the heart of the Plymouth Technology Parks
- Easy access to M-14/I-275 interchange
- Close to multiple hotels, St. John's conference facilities, golf and restaurants
- Aggressive lease rates



For more information, please contact:

**CHRISTOPHER M. D'ANGELO**

(248) 948 0109

cdangelo@signatureassociates.com

**JASON STOUGH**

(248) 948 4180

jstough@signatureassociates.com

**SIGNATURE ASSOCIATES**

One Towne Square, Suite 1200

Southfield, MI 48076

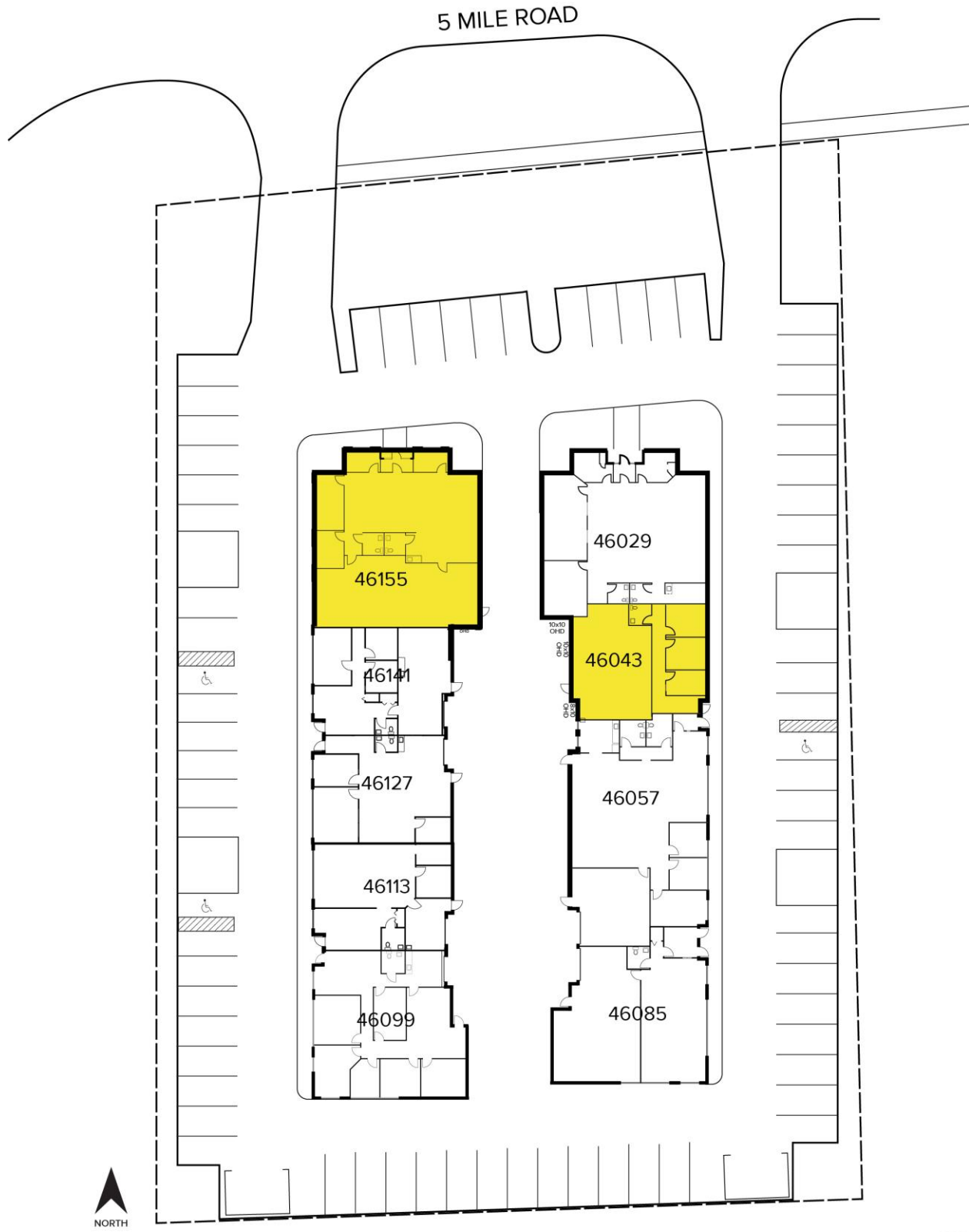
www.signatureassociates.com

# 46029 - 46155 Five Mile Road – Plymouth/Twp., Michigan

## Hi-Tech For Lease

1,780 & 3,250  
Square Feet  
AVAILABLE

### Site Plan



For more information, please contact:

**CHRISTOPHER M. D'ANGELO**  
(248) 948 0109  
cdangelo@signatureassociates.com

**JASON STOUGH**  
(248) 948 4180  
jstough@signatureassociates.com

**SIGNATURE ASSOCIATES**  
One Towne Square, Suite 1200  
Southfield, MI 48076  
www.signatureassociates.com

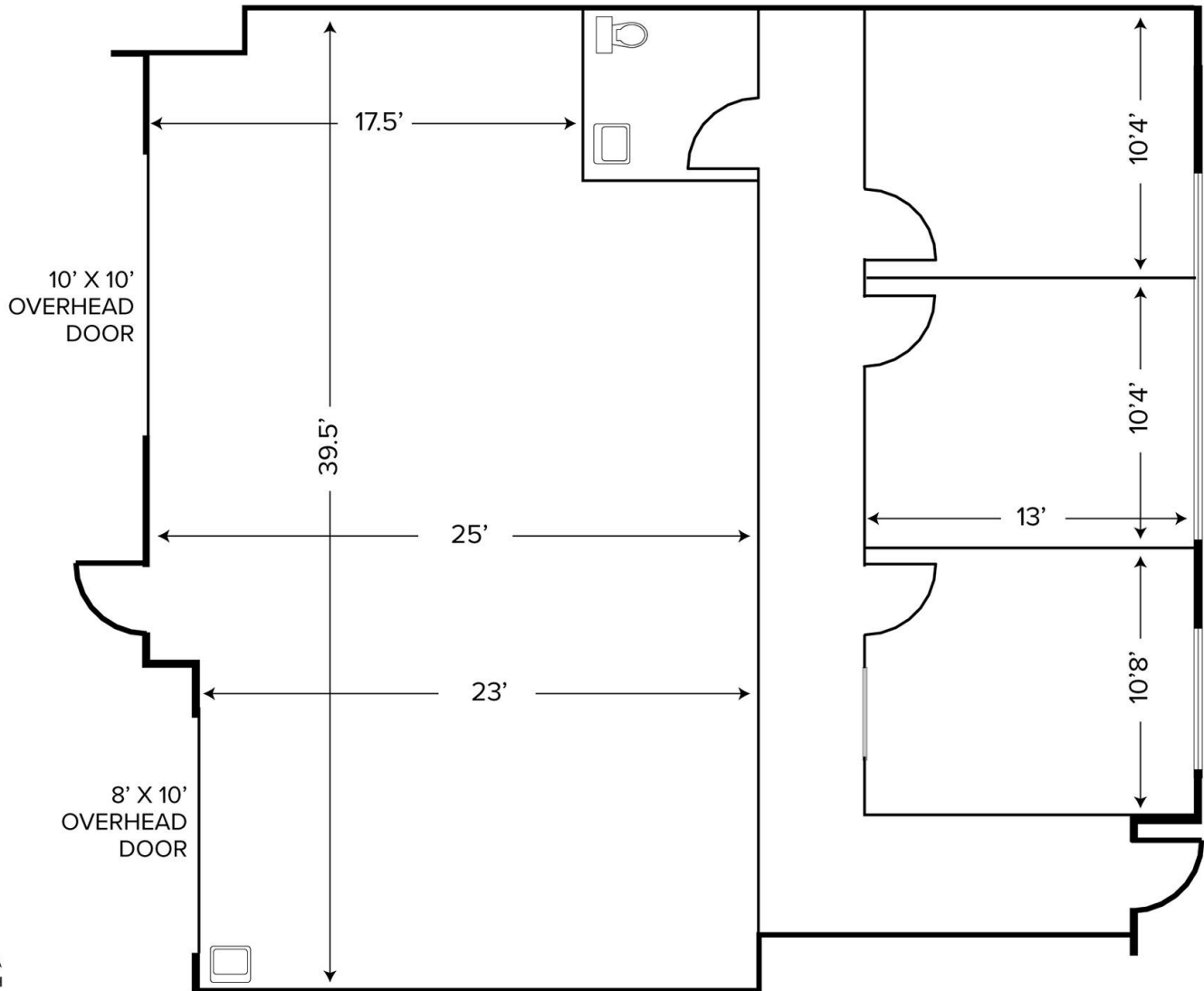
# 46029 - 46155 Five Mile Road – Plymouth/Twp., Michigan

## Hi-Tech For Lease

1,780 & 3,250  
Square Feet  
AVAILABLE

### Floor Plan

AVAILABILITY			
UNIT	TOTAL SF	OFFICE SF	RATE
46043	1,780	854	\$16.80 G + U



For more information, please contact:

**CHRISTOPHER M. D'ANGELO**  
(248) 948 0109  
cdangelo@signatureassociates.com

**JASON STOUGH**  
(248) 948 4180  
jstough@signatureassociates.com

**SIGNATURE ASSOCIATES**  
One Towne Square, Suite 1200  
Southfield, MI 48076  
www.signatureassociates.com

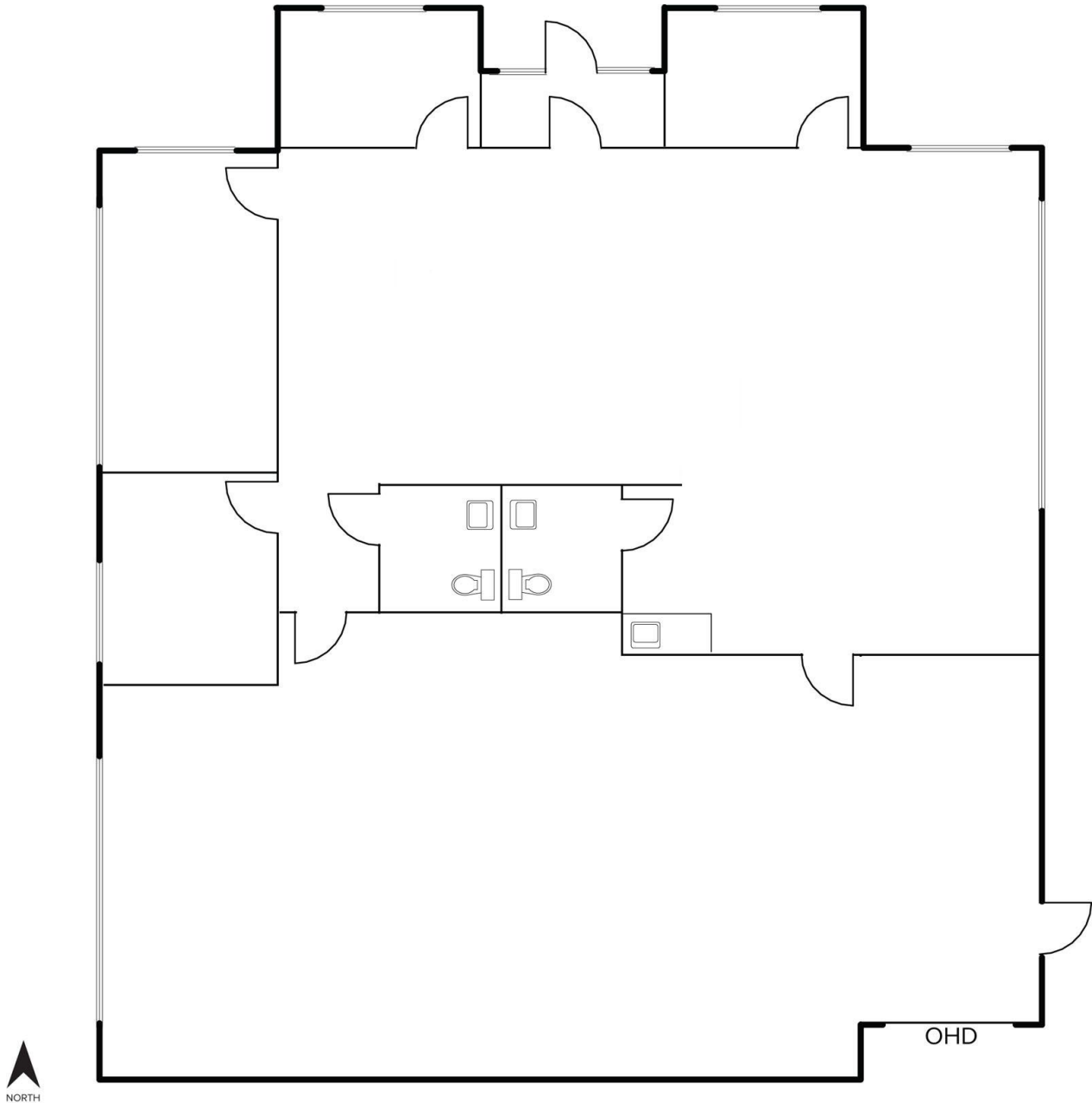
# 46029 - 46155 Five Mile Road – Plymouth/Twp., Michigan

## Hi-Tech For Lease

1,780 & 3,250  
Square Feet  
AVAILABLE

### Floor Plan

AVAILABILITY			
UNIT	TOTAL SF	OFFICE SF	RATE
46155	3,250	2,925	\$16.80 G + U



For more information, please contact:

**CHRISTOPHER M. D'ANGELO**  
(248) 948 0109  
cdangelo@signatureassociates.com

**JASON STOUGH**  
(248) 948 4180  
jstough@signatureassociates.com

**SIGNATURE ASSOCIATES**  
One Towne Square, Suite 1200  
Southfield, MI 48076  
www.signatureassociates.com