



1425 NORTH MCDOWELL

SEQUOIA

BUSINESS CENTER

...

PETALUMA, CA

## OFFICE SPACE FOR LEASE

**Steven Leonard**  
Managing Director  
+1 415 722 1080  
[steven.leonard@cushwake.com](mailto:steven.leonard@cushwake.com)  
Lic #: 00909604

**Brian Foster**  
Executive Director  
+1 415 451 2437  
[brian.foster@cushwake.com](mailto:brian.foster@cushwake.com)  
Lic #: 01393059

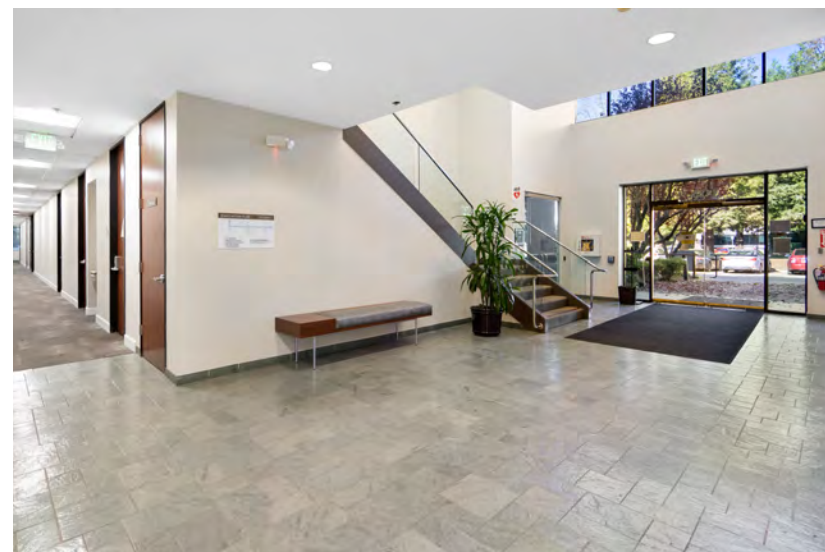
**Drew Soltis**  
Associate  
+1 415 451 2415  
[drew.soltis@cushwake.com](mailto:drew.soltis@cushwake.com)  
Lic #: 02163430

**Trevor Buck**  
Executive Managing Director  
+1 415 451 2436  
[trevor.buck@cushwake.com](mailto:trevor.buck@cushwake.com)  
Lic #: 01255462



## Property Highlights

- 2 story elevator served office building
- Abundant exterior glass
- Flexible floor plans
- Approximately 117 on site parking spaces
- 2 EV charging stations
- \$2.10 PSF full service
- One block from US 101 at Old Redwood Highway
- Mature landscaping throughout/ surrounded by mature redwood trees
- Common area conference room (Click [here](#) for 3D tour)
- Close proximity to Redwood Business Center/Lagunitas and Hen House Brewery



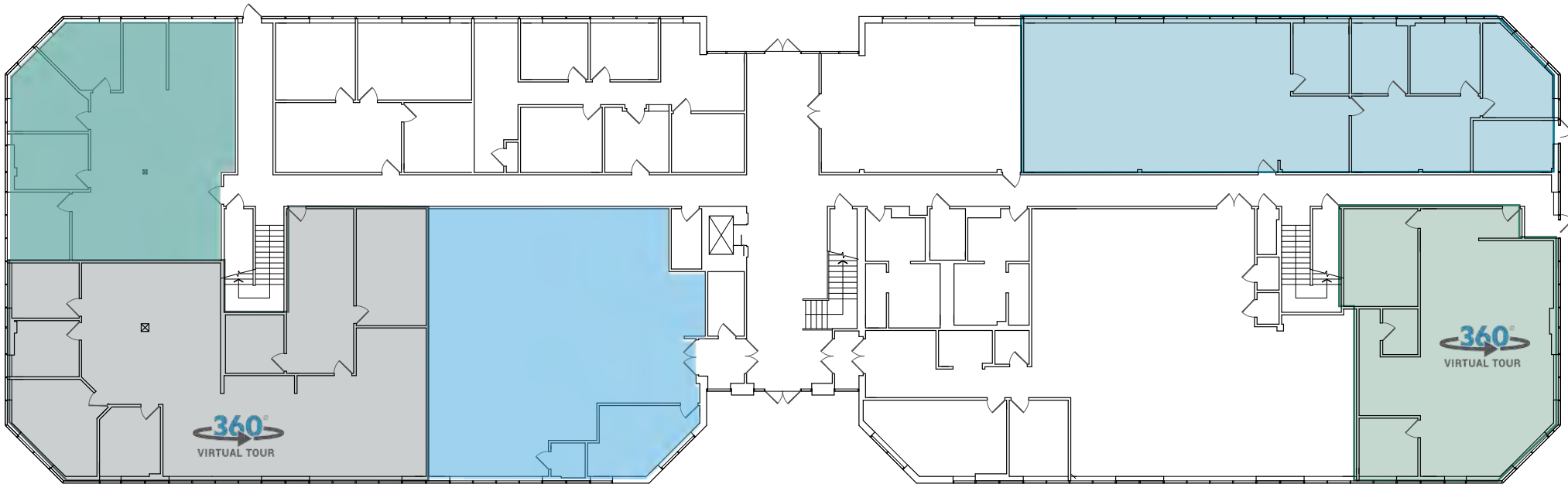
# 1st Floor Plan

## Suite 105

RSF: ±1,835

## Suite 125

RSF: ±2,662



## Suite 103

RSF: ±3,301

## Suite 140

RSF: ±2,662

## Suite 130

RSF: ±1,847

1425 NORTH MCDOWELL

# SEQUOIA

## BUSINESS CENTER

...

PETALUMA, CA

## OFFICE SPACE FOR LEASE

**Steven Leonard**  
Managing Director  
+1 415 722 1080  
[steven.leonard@cushwake.com](mailto:steven.leonard@cushwake.com)  
Lic #: 00909604

**Brian Foster**  
Executive Director  
+1 415 451 2437  
[brian.foster@cushwake.com](mailto:brian.foster@cushwake.com)  
Lic #: 01393059

**Drew Soltis**  
Associate  
+1 415 451 2415  
[drew.soltis@cushwake.com](mailto:drew.soltis@cushwake.com)  
Lic #: 02163430

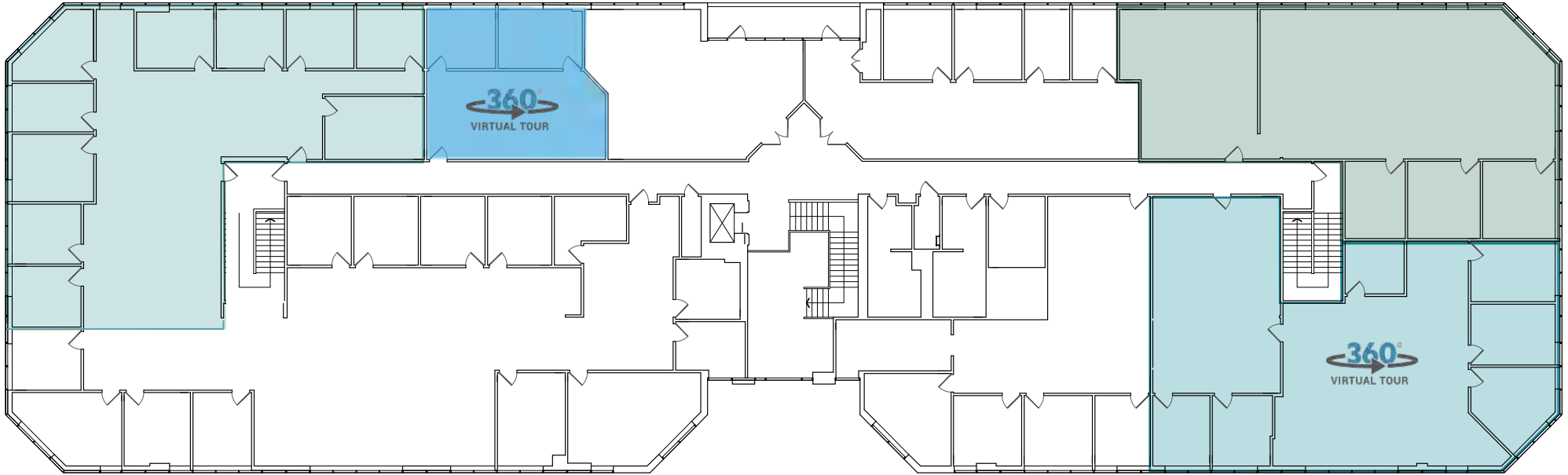
**Trevor Buck**  
Executive Managing Director  
+1 415 451 2436  
[trevor.buck@cushwake.com](mailto:trevor.buck@cushwake.com)  
Lic #: 01255462

# 2nd Floor Plan

**Suite 215**  
RSF: ±3,416

**Suite 213**  
RSF: ±910

**Suite 207\***  
RSF: ±2,526



\*Suites 204 & 207 can be combined for a total of ±5,655 SF  
\*Suites 215 & 213 can be combined for a total of ±4,326 SF

**Suite 204\***  
RSF: ±3,129

1425 NORTH MCDOWELL

SEQUOIA

BUSINESS CENTER

...

PETALUMA, CA

## OFFICE SPACE FOR LEASE

**Steven Leonard**  
Managing Director  
+1 415 722 1080  
[steven.leonard@cushwake.com](mailto:steven.leonard@cushwake.com)  
Lic #: 00909604

**Brian Foster**  
Executive Director  
+1 415 451 2437  
[brian.foster@cushwake.com](mailto:brian.foster@cushwake.com)  
Lic #: 01393059

**Drew Soltis**  
Associate  
+1 415 451 2415  
[drew.soltis@cushwake.com](mailto:drew.soltis@cushwake.com)  
Lic #: 02163430

**Trevor Buck**  
Executive Managing Director  
+1 415 451 2436  
[trevor.buck@cushwake.com](mailto:trevor.buck@cushwake.com)  
Lic #: 01255462



1425 N MCDOWELL

US HIGHWAY 101



1425 NORTH MCDOWELL

SEQUOIA

BUSINESS CENTER

...

PETALUMA, CA

## OFFICE SPACE FOR LEASE

**Steven Leonard**  
Managing Director  
+1 415 722 1080  
[steven.leonard@cushwake.com](mailto:steven.leonard@cushwake.com)  
Lic #: 00909604

**Brian Foster**  
Executive Director  
+1 415 451 2437  
[brian.foster@cushwake.com](mailto:brian.foster@cushwake.com)  
Lic #: 01393059

**Drew Soltis**  
Associate  
+1 415 451 2415  
[drew.soltis@cushwake.com](mailto:drew.soltis@cushwake.com)  
Lic #: 02163430

**Trevor Buck**  
Executive Managing Director  
+1 415 451 2436  
[trevor.buck@cushwake.com](mailto:trevor.buck@cushwake.com)  
Lic #: 01255462