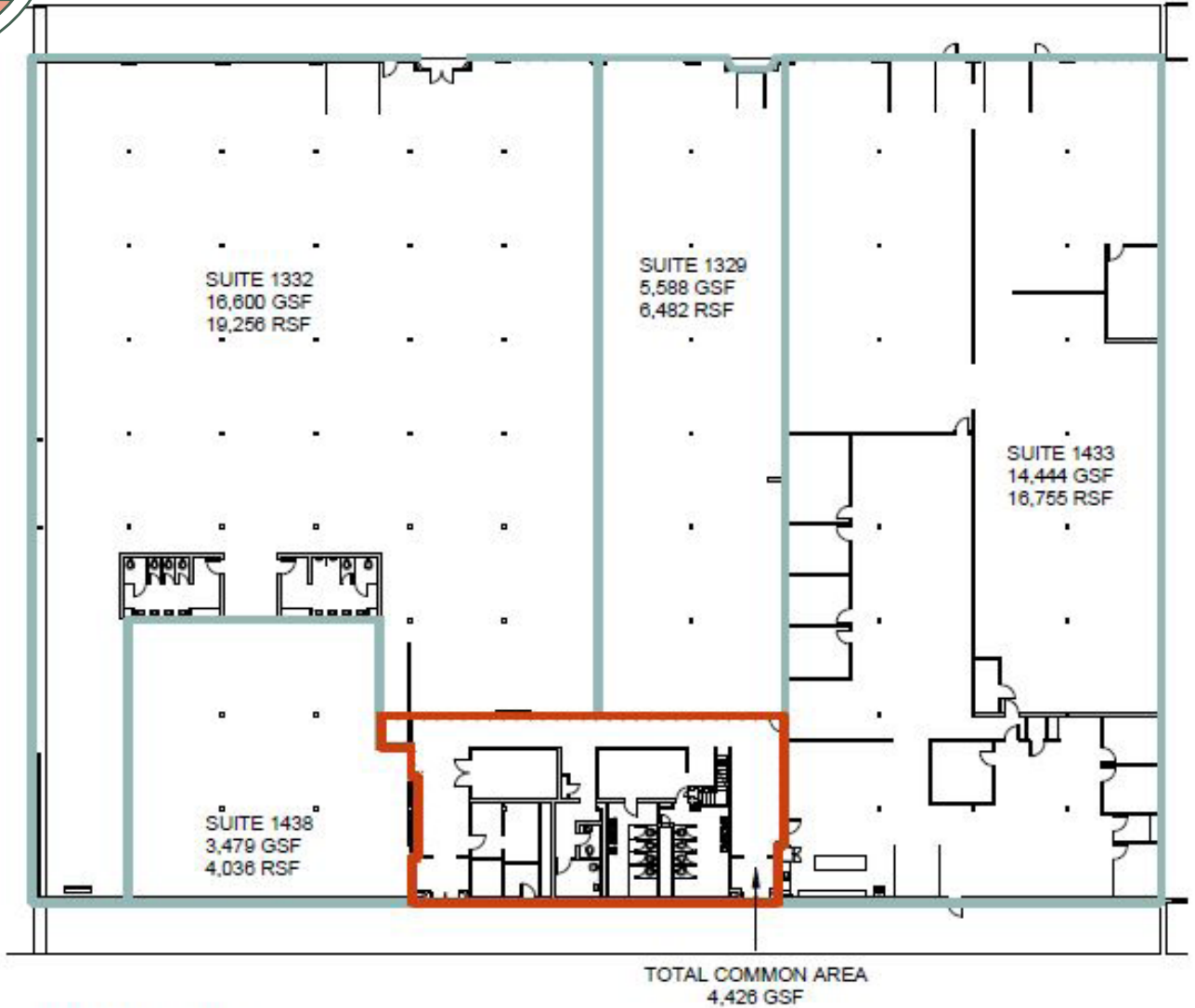




3833 N STEELE ST

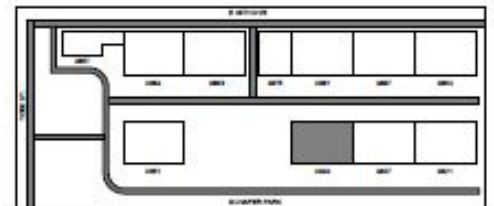


BUILDING - 3833
1/32" = 1'-0"

LINE LEGEND

- TENANT SPACE
- COMMON SPACE

SITE PLAN



For Leasing Information, Contact:

ANDREW PIEPGRAS
Vice President
303.882.6591
APiepgras@LPC.com

MARK DWYER
Vice President
303.877.1620
MDwyer@LPC.com

Lincoln