

FOR LEASE

2435 - 2441 BOARDWALK ST , SAN ANTONIO, TX 78217



5,400 SF of Industrial Flex Space

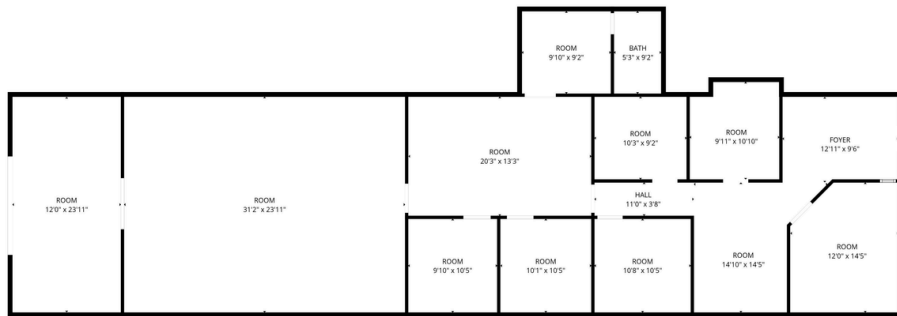
ABOUT THE PROPERTY:

2435-2441 Boardwalk St is a 10,000 SF multi-tenant office-warehouse property in the North Central San Antonio submarket. Tenants benefit from a showroom with two private offices, open warehouse space, grade-level loading, 100 % HVAC, and quick access to Loop 410, US-281, and Wurzbach Parkway.

FEATURES:

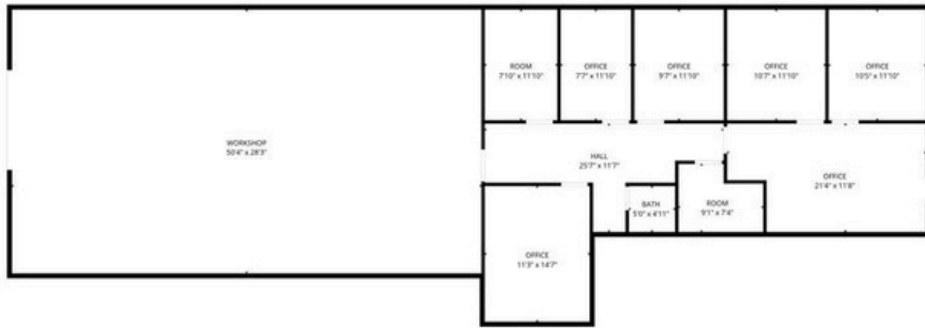
- Two flex suites available
- Showroom with private offices and warehouse
- 100% HVAC
- Grade-level loading
- North Central infill location
- Quick access to Loop 410, US-281, and Wurzbach Pkwy
- Available 5/1/26

AVAILABILITY - STE 2435



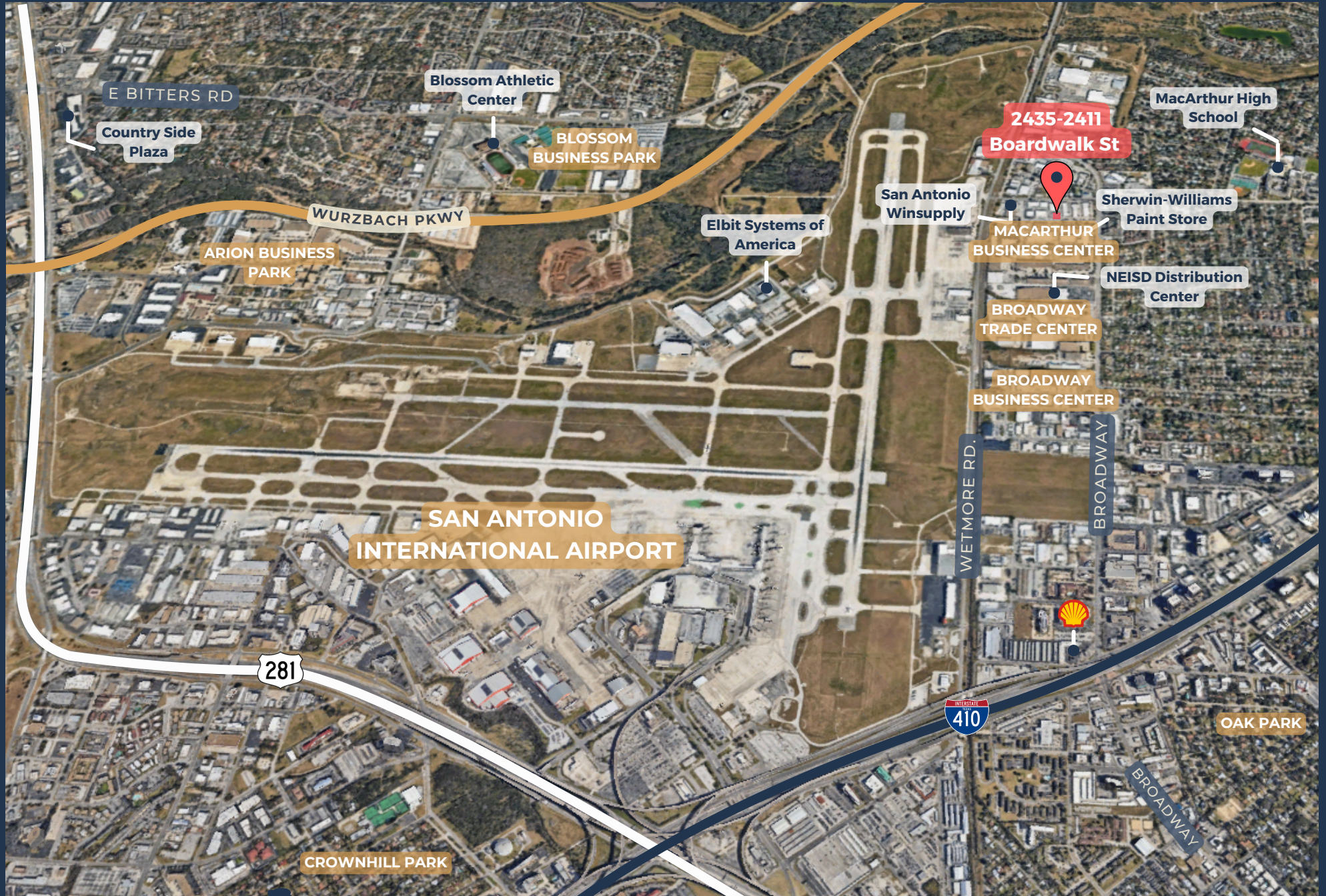
2,650 SF
Showroom with private offices
and warehouse
100% HVAC

AVAILABILITY - STE 2411



2,750 SF
Showroom with private offices
and warehouse
100% HVAC

AREA OVERVIEW





CONTACT OUR TEAM



Cullen Mills
Co-Founder & President
cmills@llanorealty.com
(210) 926-5812



Colin McLellan
Partner
cmclellan@llanorealty.com
(210) 908-6345



Jake Esparza
Associate
jesparza@llanorealty.com
(210) 874-5314