



Basehor, KS Mixed-Use Development

Pad Sites Available For Sale or Build-to-Suit


155th Street & State Avenue (NEQ), Basehor, Kansas



ASKING PRICE: \$2.50 - \$5.00/SF | 0.75-5 ACRES



- Located just west of the Legends Regional Tourism district
- Excellent visibility along State Avenue
- Pad sites from .75 - 5 acres available
- Anchored with Orscheln Farm & Home and new Casey's General Store
- Intersection carries 23,816 cars per day
- [Click Here to view more drone photos](#)

 [CLICK HERE TO VIEW MORE LISTING INFORMATION](#)

For More Information Contact: *Exclusive Agent*
PHIL PECK, CCIM | 816.412.7364 | ppeck@blockandco.com



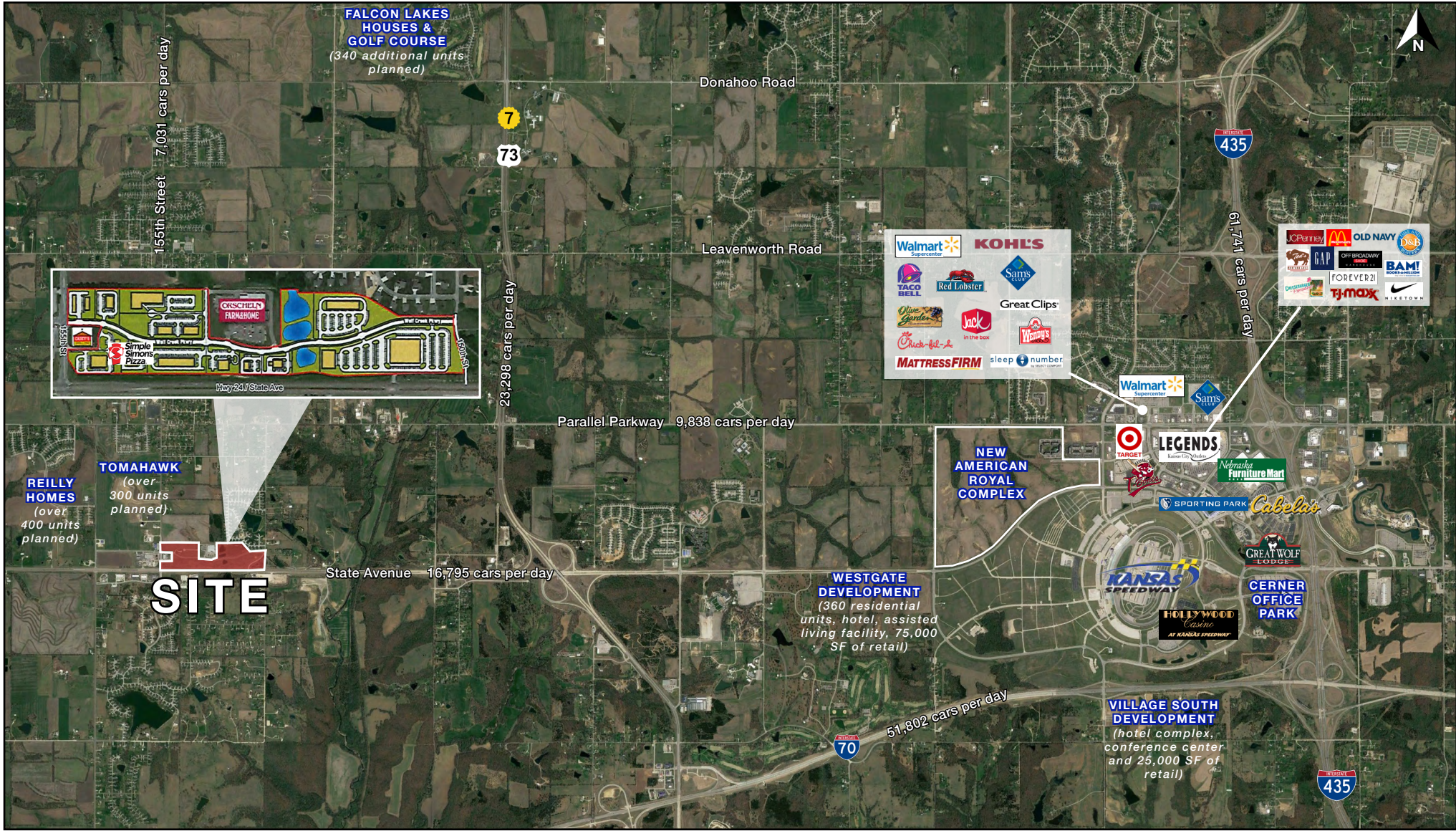


Basehor, KS Mixed-Use Development

Pad Sites Available For Sale or Build-to-Suit

155th Street & State Avenue (NEQ), Basehor, Kansas

AERIAL



All information furnished regarding property for sale or lease is from sources deemed reliable, but no warranty or representation is made as to the accuracy thereof and the same is subject to errors, omissions, changes of prices, rental or other conditions, prior sale or lease or withdrawal without notice.



Basehor, KS Mixed-Use Development

Pad Sites Available For Sale or Build-to-Suit
 155th Street & State Avenue (NEQ), Basehor, Kansas

PLAN



Lot #	Square Footage	Lot #	Square Footage
1	58,658 SF	8	54,105 SF
2	55,306 SF - SOLD	9	69,696 SF
3	35,019 SF	10	32,234 SF
4	45,923 SF - Under Contract	11	45,302 SF
5	37,795 SF	12	242,194 SF
6	54,306 SF - SOLD	13	197,327 SF
7	54,221 SF		





Basehor, KS Mixed-Use Development

Pad Sites Available For Sale or Build-to-Suit

155th Street & State Avenue (NEQ), Basehor, Kansas

DRONE AERIAL





Basehor, KS Mixed-Use Development

Pad Sites Available For Sale or Build-to-Suit
155th Street & State Avenue (NEQ), Basehor, Kansas

DRONE AERIAL





Basehor, KS Mixed-Use Development

Pad Sites Available For Sale or Build-to-Suit
155th Street & State Avenue (NEQ), Basehor, Kansas

CO-TENANT PHOTOS

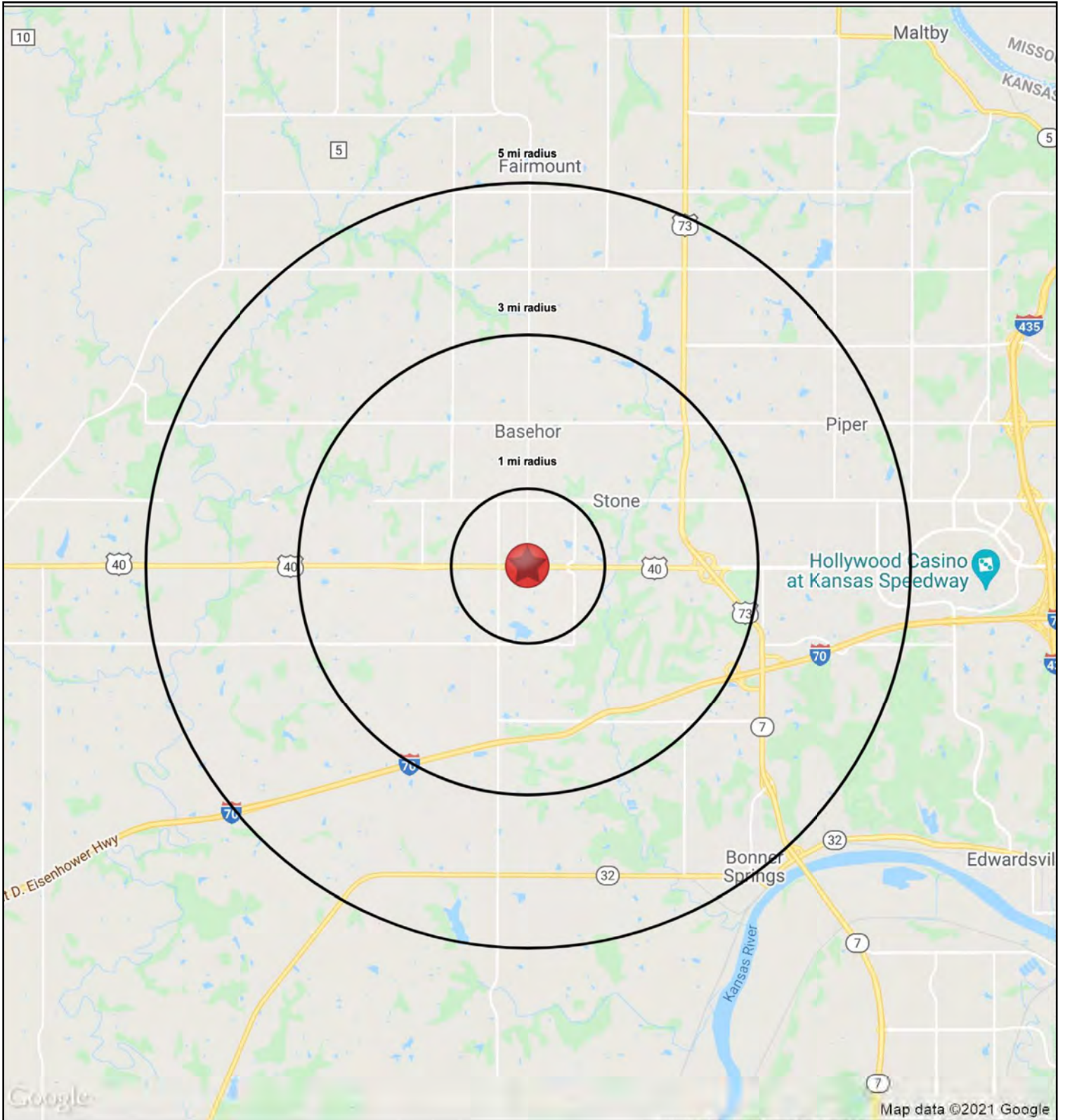




Basehor, KS Mixed-Use Development

Pad Sites Available For Sale or Build-to-Suit

155th Street & State Avenue (NEQ), Basehor, Kansas





Basehor, KS Mixed-Use Development

Pad Sites Available For Sale or Build-to-Suit

155th Street & State Avenue (NEQ), Basehor, Kansas

155th & 24-40 Highway

Basehor, KS 66007

		1 mi radius	3 mi radius	5 mi radius
POPULATION	2020 Estimated Population	2,667	10,392	24,882
	2025 Projected Population	2,713	10,513	24,973
	2010 Census Population	1,961	8,115	19,282
	2000 Census Population	1,486	5,781	14,202
	Projected Annual Growth 2020 to 2025	0.3%	0.2%	-
	Historical Annual Growth 2000 to 2020	4.0%	4.0%	3.8%
	2020 Median Age	38.9	38.0	37.5
HOUSEHOLDS	2020 Estimated Households	1,000	3,937	9,451
	2025 Projected Households	1,031	4,026	9,556
	2010 Census Households	730	3,053	7,294
	2000 Census Households	524	2,050	5,174
	Projected Annual Growth 2020 to 2025	0.6%	0.5%	0.2%
	Historical Annual Growth 2000 to 2020	4.5%	4.6%	4.1%
RACE AND ETHNICITY	2020 Estimated White	91.1%	88.8%	83.4%
	2020 Estimated Black or African American	3.1%	4.3%	7.0%
	2020 Estimated Asian or Pacific Islander	1.6%	1.7%	2.1%
	2020 Estimated American Indian or Native Alaskan	0.6%	0.7%	0.8%
	2020 Estimated Other Races	3.6%	4.4%	6.7%
	2020 Estimated Hispanic	5.7%	6.7%	9.7%
INCOME	2020 Estimated Average Household Income	\$93,547	\$87,693	\$85,783
	2020 Estimated Median Household Income	\$98,337	\$92,178	\$85,784
	2020 Estimated Per Capita Income	\$35,069	\$33,222	\$32,596
EDUCATION (AGE 25+)	2020 Estimated Elementary (Grade Level 0 to 8)	1.6%	1.5%	1.9%
	2020 Estimated Some High School (Grade Level 9 to 11)	2.6%	3.2%	4.6%
	2020 Estimated High School Graduate	27.2%	28.0%	29.0%
	2020 Estimated Some College	19.4%	20.0%	20.4%
	2020 Estimated Associates Degree Only	11.7%	11.3%	9.4%
	2020 Estimated Bachelors Degree Only	21.7%	20.4%	19.6%
	2020 Estimated Graduate Degree	15.9%	15.6%	15.0%
BUSINESS	2020 Estimated Total Businesses	84	192	475
	2020 Estimated Total Employees	1,069	2,079	5,037
	2020 Estimated Employee Population per Business	12.8	10.9	10.6
	2020 Estimated Residential Population per Business	31.9	54.3	52.4