

1190 & 1250 NORMAN AVE
SANTA CLARA

3 Industrial Units For Lease on Norman Ave in Santa Clara

1196-A Norman: ±720 SF

1252 Norman: ±1,440 SF

1262 Norman: ±1,440 SF



BUILDING FOR SALE
DAVID TAXIN JEREMY AWDISHO
408.966.5919 650.814.4510

CROSSLINE CAR CARE
PERFECTION REDEFINED

1190
1200

OVERVIEW



UNIT SIZE

UNIT 1196-A: ±720 SF

UNIT 1252: ±1,440 SF

UNIT 1262: ±1,440 SF

ASKING RENT

UNIT 1196-A: \$2.50 PSF Plus NNN

UNIT 1252: \$2.50 PSF Plus NNN

UNIT 1262: \$1.99 PSF Plus NNN

OF UNITS FOR LEASE: 3

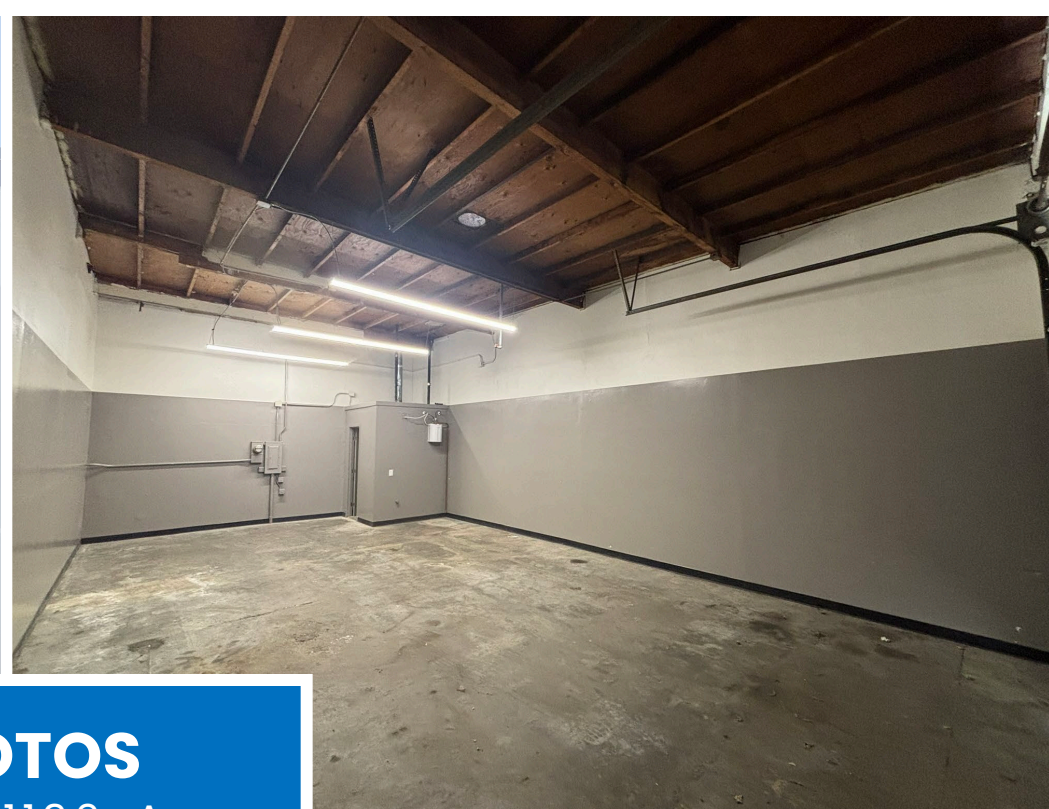
CLEAR HEIGHT: 13'

OF ROLL UP DOORS: 1 Per Unit

ZONING & GENERAL PLAN: Low Intensity Office/R&D



FOR LEASE
BOBBY FACCHINO
bobby@smoac.net
408-318-4623
MEACHAM/COMMERCIAL, INC.



PHOTOS
UNIT: 1196-A
SIZE: ±720 SF





PHOTOS
UNIT: 1252
SIZE: ±1,440 SF



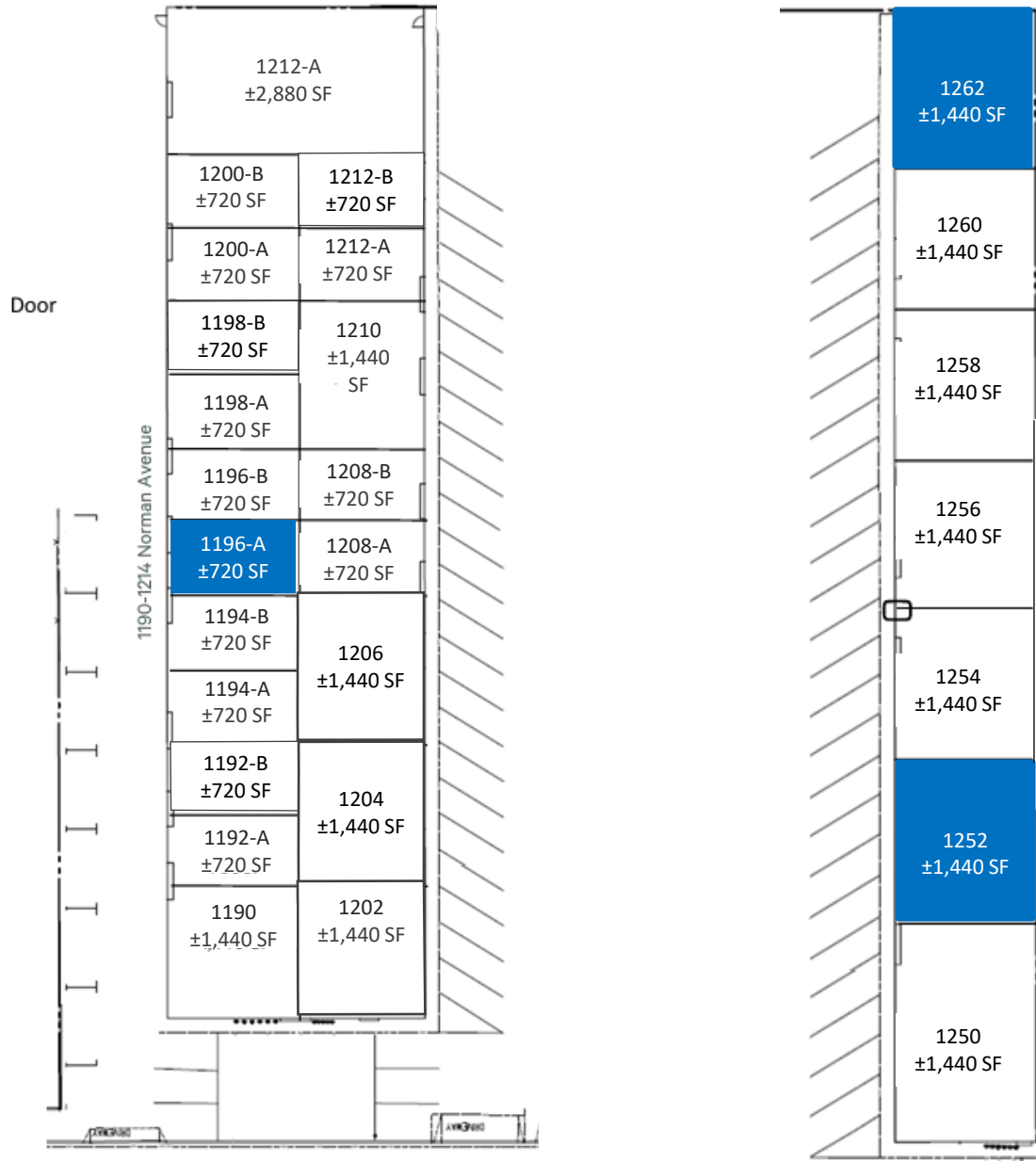


PHOTOS
UNIT: 1262
SIZE: ±1,440 SF



SITE PLAN & VACANT UNITS

UNITS IN BLUE
ARE VACANT



AERIAL PHOTO



DEMOGRAPHICS

2026 SUMMARY

1-MILE

5-MILE

10-MILE

Population	14,724	455,987	1,453,420
Households	5,092	169,365	498,869
Average Household Size	2.7	2.6	2.8
Owner Occupied Housing Units	1,881	64,939	238,186
Renter Occupied Housing Units	3,056	98,957	242,573
Median Age	36.2	36.7	38.7
Median Household Income	\$173,786	\$152,084	\$145,677
Average Household Income	\$187,439	\$175,066	\$171,485

1190 & 1250 NORMAN AVE
SANTA CLARA

**CROSSLINE CAR CARE**
PERFECTION REDEFINED

BOBBY FACCHINO
Senior Associate
Lic. #02178873
408.318.0623
bobby@moinc.net

MEACHAM/OPPENHEIMER, INC.
8 N San Pedro St. #300
San Jose, CA 95110
Tel. 408.378.5900 | www.moinc.net

