

FOR LEASE

Moody Commerce Park

2515 U.S. Highway 78
Moody, AL 35004



AVAILABLE NOW

- 52,000± SF Warehouse Space
- Lease Rate: **\$6.75 PSF (NNN)**

For more information, please contact:

BRAD MOFFATT, SIOR
Executive Vice President | Partner
+1 205 314 5509
bmoффatt@egsinc.com

2100 3rd Avenue North
Suite 700
Birmingham, AL 35203
phone: +1 205 939 4440
egsinc.com

SCAN HERE



Independently Owned and Operated / A Member of the Cushman & Wakefield Alliance
Cushman & Wakefield Copyright 2025. No warranty or representation, express or implied, is made to the accuracy or completeness of the information contained herein, and same is submitted subject to errors, omissions, change of price, rental or other conditions, withdrawal without notice, and to any special listing conditions imposed by the property owner(s). As applicable, we make no representation as to the condition of the property (or properties) in question.

FOR LEASE

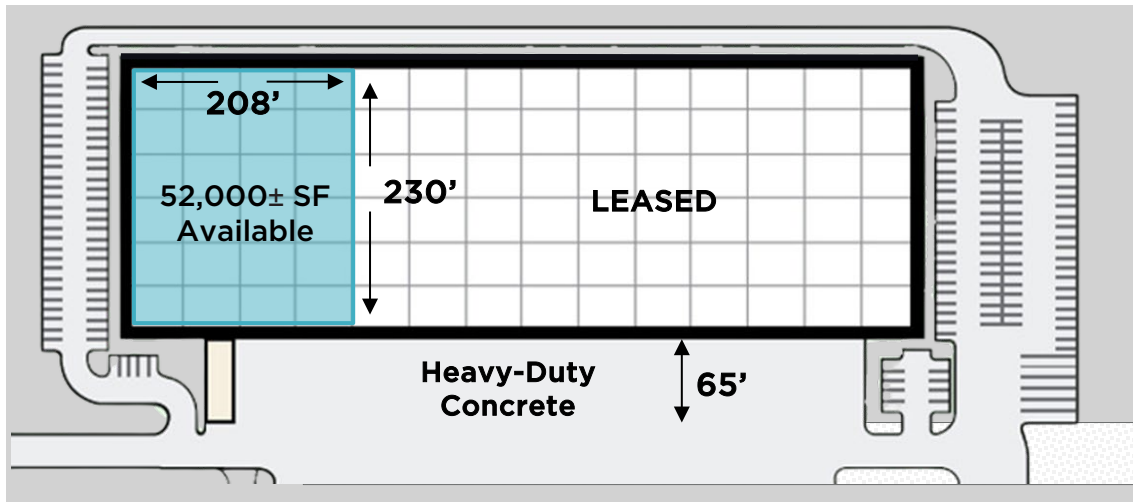
Moody Commerce Park

2515 U.S. Highway 78
Moody, AL 35004

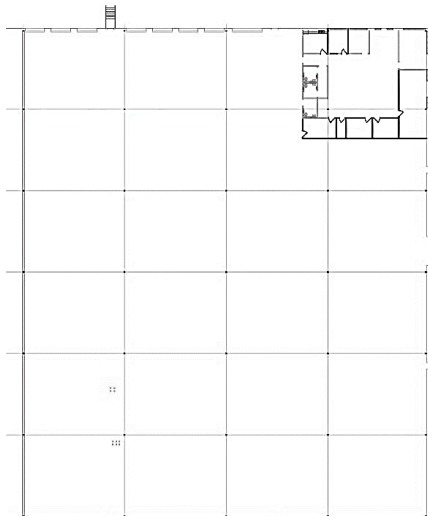
CUSHMAN &
WAKEFIELD

EGS

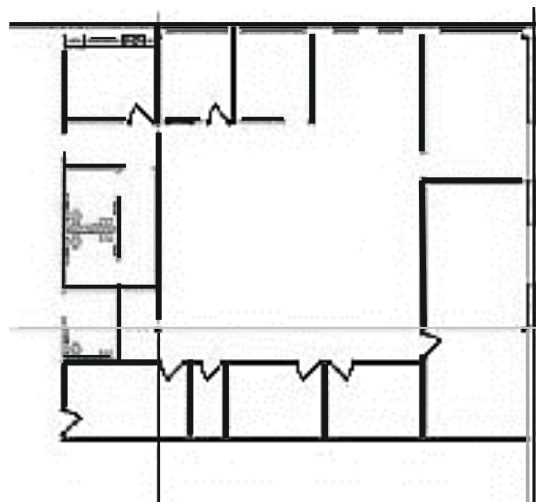
Site Plan



Layout Drawing



Office Space



PROPERTY HIGHLIGHTS

- 3,500± sf of office area; 48,500± sf of warehouse
- Concrete tilt-up construction; 32' clear
- EFSR sprinkler system
- High-efficiency lighting fixtures
- 400 amp, 3 phase, 480 volt electrical service
- Seven (7) 9' x 10' dock-high doors
- One (1) 12' x 14' drive-in door (front)
- One (1) 12' x 14' grade level door (side)
- Sixty (60) car parking spaces

LOCATION

