



# 334 Grand St

(Corner of Grand Street & Ludlow Street)

As Exclusive Agents, we are pleased  
to present the following for Lease:

## Retail Space For Lease

 **Douglas Elliman**  
Commercial

575 MADISON AVENUE, NEW YORK, NEW YORK 10022

# 334 Grand Street, Retail

One of kind opportunity to lease corner retail space located in the heart of the Lower East Side neighborhood offering high visibility to exceptional street traffic.

**Location** Northwest Corner of Grand & Ludlow Streets

**Space** Ground Level - 900 SF  
Lower Level - 700 SF

**Frontage** 65' Corner Wrap

**Rental** Upon Request

**Possession** Arranged

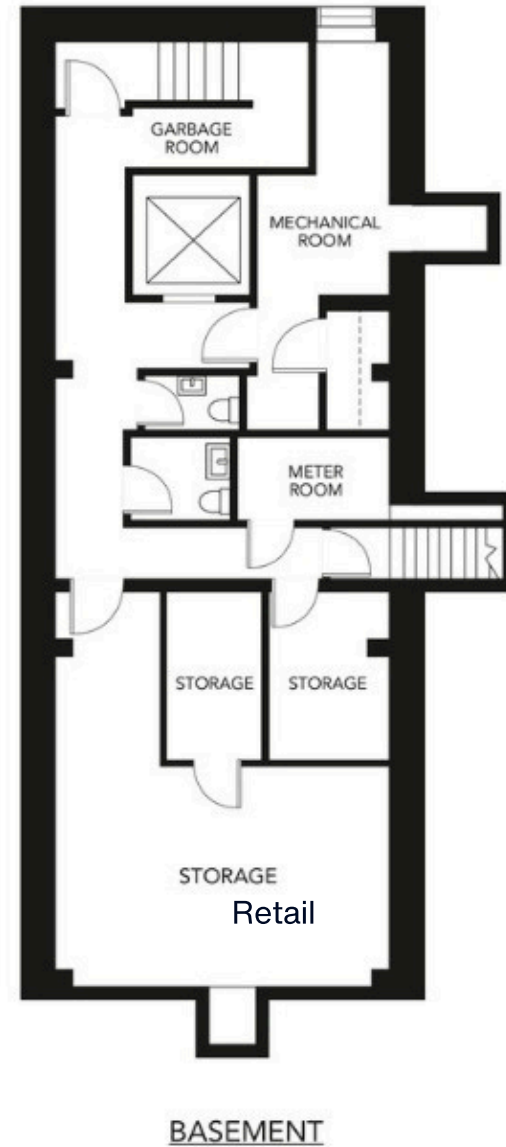
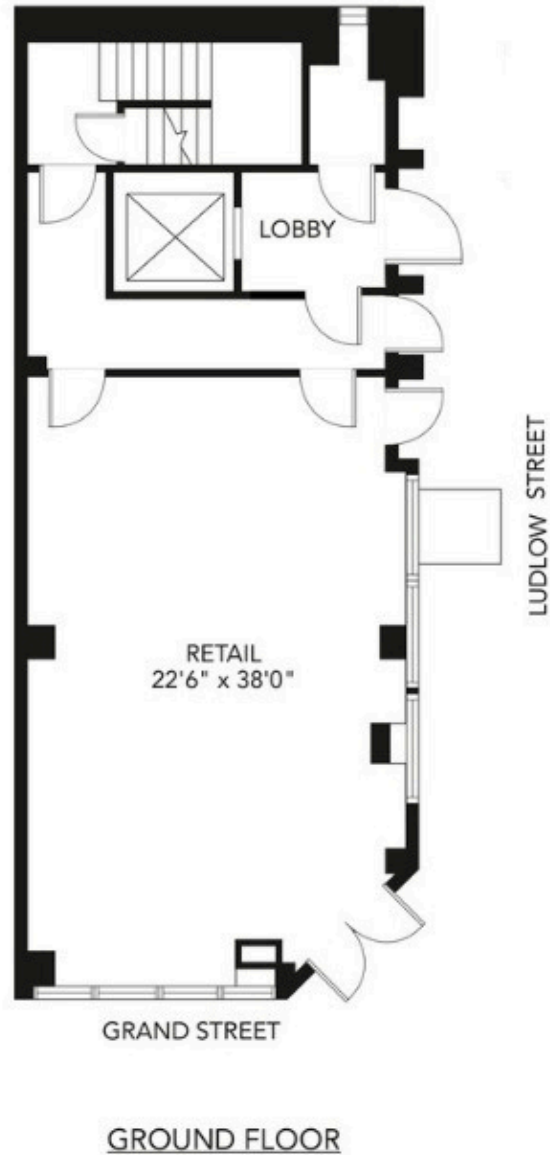
**Features**

- All Uses Considered
- Side-Vented Ground Floor
- Split System Cooling & Forced Air Heating
- Generous Natural Light
- Outdoor Café Seating Potential
- Sidewalk Access to Lower Level for Efficient Load-In/Load-Out
- Private Restroom
- Nearby proximity to F, M, J, Z, B, D (Delancey St-Essex St and Grand St stations)



Space Rendering

# 334 Grand Street, Retail



 **Douglas Elliman**  
Commercial

575 MADISON AVENUE, NEW YORK, NEW YORK 10022

*Renderings and floor plans are intended only as a general reference. Features, materials, finishes, layout and actual measurements may be different than indicated.*

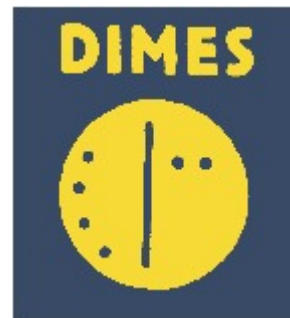
# 344 Grand Street, Retail

NOTABLE NEIGHBORHOOD ATTRACTIONS AND NEIGHBORS



**TRADER JOE'S**

VITAL Climbing Gym

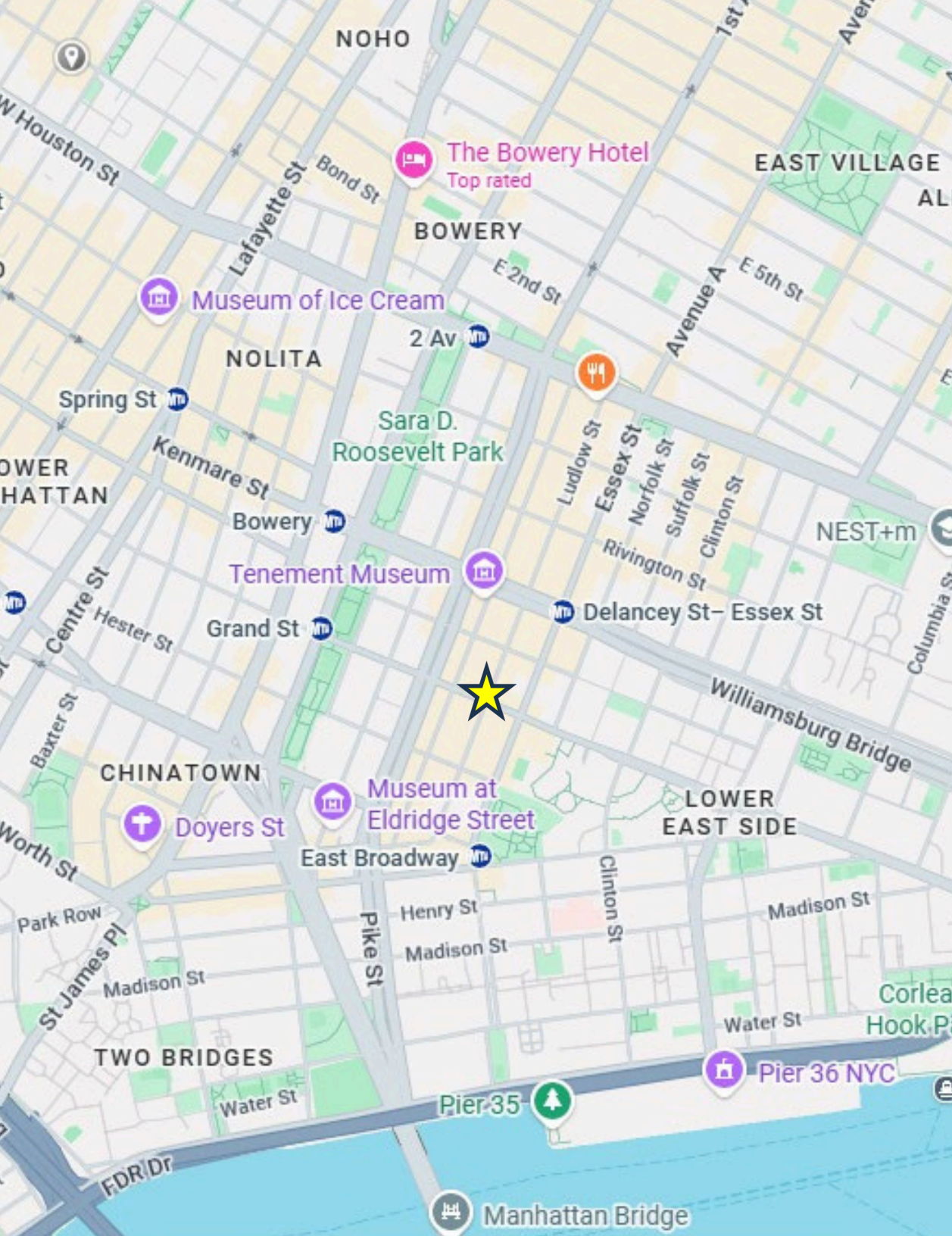


**TENEMENT MUSEUM**

**METROGRAPH**

**RUSS & DAUGHTERS**





For further information and inspection, please contact:

**Louis Puopolo**  
Division Head NYC - DE Commercial  
Licensed Associate Real Estate Broker  
917-374-0099  
[louis.puopolo@elliman.com](mailto:louis.puopolo@elliman.com)

**Alex Furst**  
Executive Director - DE Commercial  
Licensed Associate Real Estate Broker  
347-281-3165  
[alexander.furst@elliman.com](mailto:alexander.furst@elliman.com)

**Kristin Irwin**  
Operations Manager - DE Commercial  
Licensed Real Estate Salesperson  
336-420-1993  
[kristin.irwin@elliman.com](mailto:kristin.irwin@elliman.com)

 **Douglas Elliman**  
Commercial  
575 MADISON AVENUE, NEW YORK, NEW YORK 10022

©2026 DOUGLAS ELLIMAN COMMERCIAL, LLC. ALL RIGHTS RESERVED. THE INFORMATION CONTAINED IN THIS DOCUMENT IS PROPRIETARY TO DOUGLAS ELLIMAN COMMERCIAL, LLC AND SHALL BE USED SOLELY FOR THE PURPOSES OF EVALUATING THIS PROPOSAL. ALL SUCH DOCUMENTATION AND INFORMATION REMAINS THE PROPERTY OF DOUGLAS ELLIMAN COMMERCIAL, LLC AND SHALL BE KEPT CONFIDENTIAL. REPRODUCTION OF ANY PART OF THIS DOCUMENT IS AUTHORIZED ONLY TO THE EXTENT NECESSARY FOR ITS EVALUATION. IT IS NOT TO BE SHOWN TO ANY THIRD PARTY WITHOUT THE PRIOR WRITTEN AUTHORIZATION OF DOUGLAS ELLIMAN COMMERCIAL, LLC. ALL INFORMATION CONTAINED HEREIN IS FROM SOURCES DEEMED RELIABLE; HOWEVER, NO REPRESENTATION OR WARRANTY IS MADE AS TO THE ACCURACY THEREOF.