



2000
MASSACHUSETTS
AVENUE NW

THE JAMES G. BLAINE MANSION

FOR SALE

AN ICONIC ADDRESS

The James G. Blaine Mansion presents a rare opportunity to occupy one of Washington, D.C.'s most distinguished and recognizable addresses. This fully renovated historic property seamlessly blends timeless architectural character with modern functionality. The offering includes a thoughtful integration of residential living, boutique office space, and income-generating retail, delivering both prestige and versatility within a single asset. Positioned prominently at Dupont Circle, the property offers immediate access to downtown Washington, the Red Line, and an exceptional mix of dining, retail, and hospitality. As the gateway to Embassy Row, the location carries a level of prominence and international significance that is unmatched within the city.

TOTAL RBA:

25,875 SF

BUILT/RENOV:

1881/2009

USE:

Office/Retail/
Residential

FLOORS:

4

TYPE:

Boutique
Trophy

PARKING:

Underground Private
Garage (14 Spaces)





Where History Meets Modern Design

Constructed in 1882, the James G. Blaine Mansion stands as a defining example of Washington, D.C.'s Gilded Age architecture. The property is characterized by its striking façade, grand staircases, soaring ceilings, and intricate historic detailing; elements that have been carefully preserved to maintain its original elegance and scale. A comprehensive renovation has thoughtfully reimagined the property for modern use, integrating updated systems and refined finishes while honoring its architectural legacy. The result is a sophisticated environment where historic character and contemporary design coexist effortlessly.

Property Overview

Located at 2000 Massachusetts Avenue NW, the Blaine Mansion is a one-of-a-kind, trophy-caliber asset that combines historic significance with modern luxury and income-generating potential.

The original mansion is currently configured with 8,660 square feet of boutique office space across the first two floors, providing an exceptional setting defined by architectural detail and natural light. The upper two levels encompass 7,300 square feet of private, luxury residential space, offering a rare opportunity for refined urban living within a historic landmark.

Complementing the mansion, a newly constructed west wing expands the property's functionality and appeal. This addition includes three levels of secure underground parking, 6,863 square feet of premium office space, and a private rooftop terrace featuring a lap pool, an amenity rarely found in properties of this scale and character. The northern portion of the property includes 3,052 square feet of fully vented retail space with a long-term tenant in place, enhancing both street presence and income stability.

Altogether, the Blaine Mansion represents an irreplaceable opportunity to own or occupy a landmark asset that offers architectural distinction, modern performance, and diversified revenue streams—set within one of Washington, D.C.'s most prestigious corridors.



Ceiling Heights of
9'11" - 13'10"



Large Capacity
Event Space



2 Private
Terraces



Private
Rooftop



Elevator Access
to all Floors



Underground
Private Garage





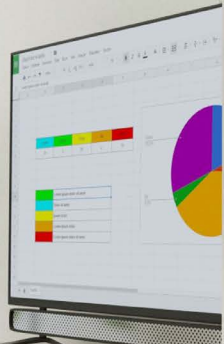




APRIL SCHEDULE
14th - Mr. Gijal
20th - NoName Arch. (On Site)

- Re-render Mall
- Meeting for new logo design
- Revision 3 incomplete (School - Landscape)

- Render Farm maintenance!
- Behind schedule
City Hall project



Floor 1 - Mansion

4,330 GSF



Floor 2 - Mansion

4,330 GSF



Floor 3 - Mansion

4,167 GSF



Floor 4 - Mansion

3,133 GSF



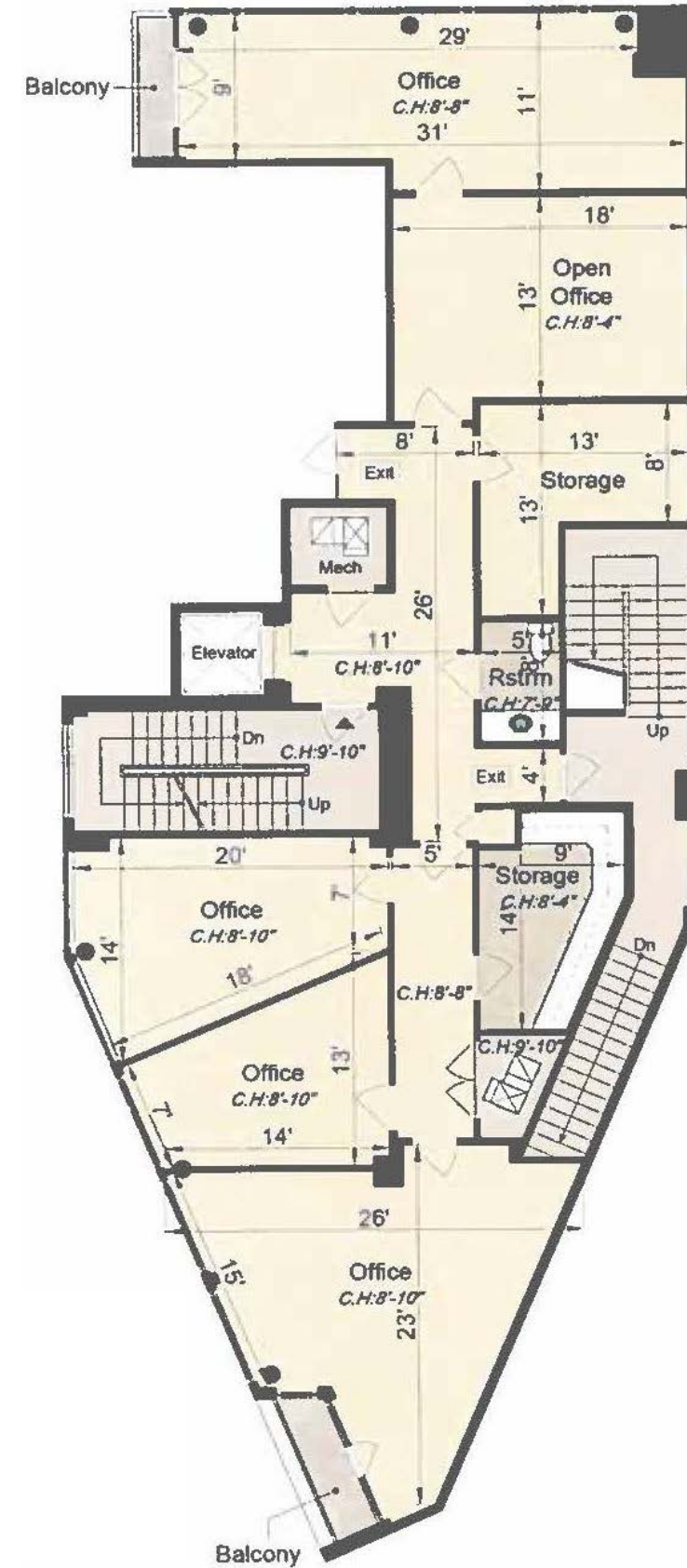
Ground Floor - Addition

3,391 GSF

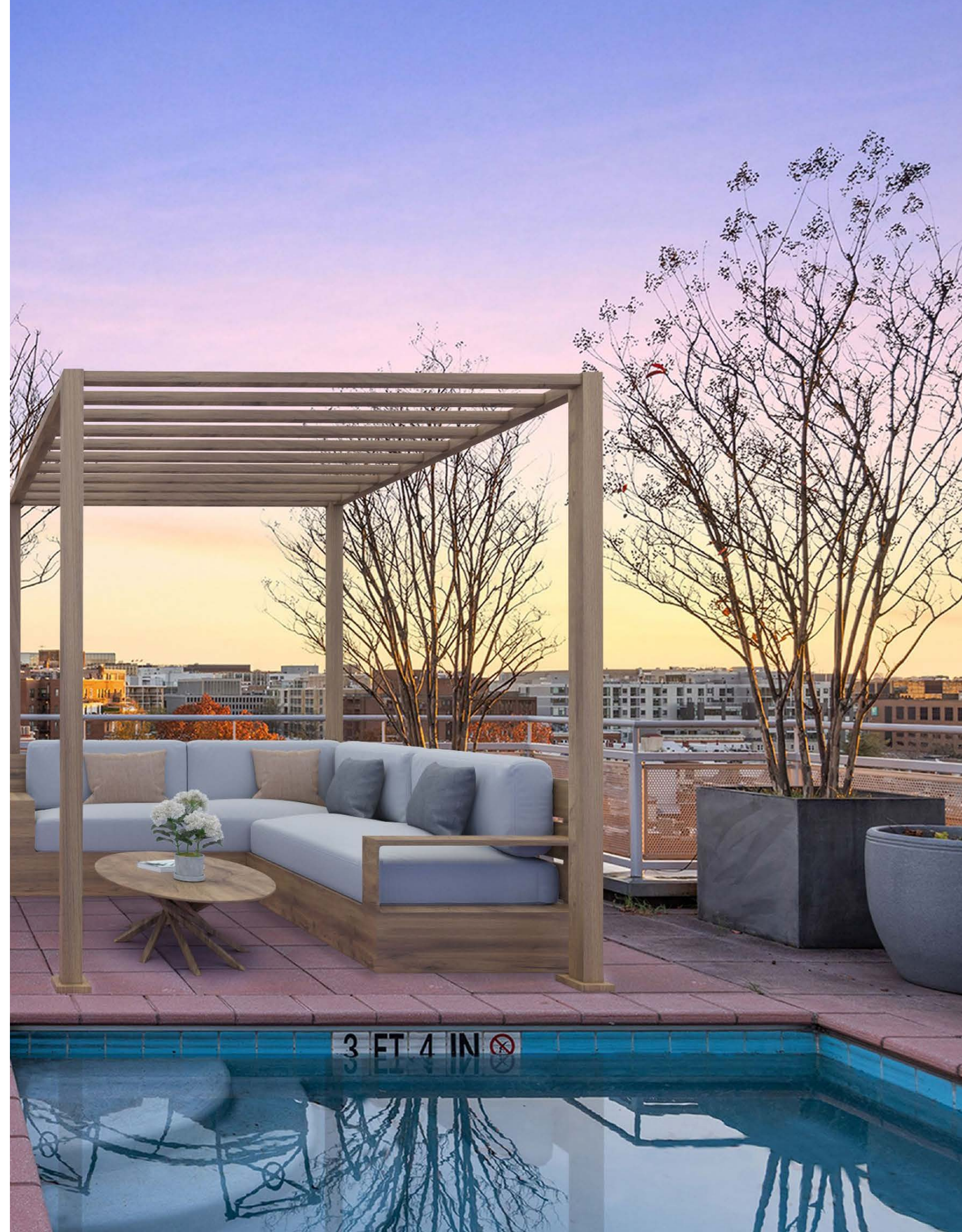


Floor 1 - Addition

3,472 GSF



Rooftop - Addition





2007 MASSACHUSETTS

PIZZERIA

LE PAIN QUOTIDIEN

EAT SPECIAL PIZZA YOUR PIZZA



Dupont Circle

2000 MASSACHUSETTS AVENUE NW

FLORIDA AVE

NEW HAMPSHIRE AVE

MASSACHUSETTS AVE

CONNECTICUT AVE

23RD ST NW

22ND ST NW

21ST ST NW

20TH ST NW

17TH ST NW

R ST NW

Q ST NW

P ST NW

O ST NW

N ST NW

Embassy of Egypt
WASHINGTON, DC

LE GOUVERNEMENT
DU GRAND-DUCHÉ DE LUXEMBOURG

PHILLIPS
The Phillips Collection

Embassy of India
Washington, D.C., USA

COSMOS CLUB
Washington D.C.

ADA
WASHINGTON CENTER
OF ADA UNIVERSITY

SETTE
OSTERIA

puregreen

Larry's
ESTABLISHED 1961

AAC&U

Government
of Montenegro

EMBASSY OF THE REPUBLIC
OF ZIMBABWE
TO THE USA

Embassy of the
Argentine Republic
United States of America

ALA
American
Library
Association

SAFeway

FLORIANA
Since 1979
Handmade Pasta, Salsas & Chees

THE AMERICAN
REVOLUTION
INSTITUTE
of The Society of the Cincinnati

THE SOCIETY of the
CINCINNATI

THE VEN
EMBASSY ROW

Panera
BREAD

BIBIBOP

sweetgreen

DUPONT
UNDERGROUND

INTERNATIONAL OPERATIONS
EST. 1972

EMBASSY OF JAMAICA
WASHINGTON, D.C.

apsa
AMERICAN
POLITICAL
SCIENCE
ASSOCIATION

EMBASSY OF THE
REPUBLIC OF IRAQ

EMBASSY OF PORTUGAL



Dupont Circle

Residence INN
BY MARRIOTT

SP
SAMPANNE

EMISSARY

DUPONT PIZZA
EST. 1985

Del Sur Cafe

SECOND STORY
BOOKS

CVS

ADMIRAL

Boogy
& PEEL

M
metro

TRUIST

THE FALAL LOGS
ESTABLISHED 1982

MADHATTER
WASHINGTON, DC

muncheez

AEI

CARNEGIE
ENDOWMENT FOR
INTERNATIONAL PEACE

BROOKINGS

Cornell University

PRINCETON
UNIVERSITY

Syracuse
University

Swingers

ala

HEURICH HOUSE MUSEUM
THE BREWMASTER'S CASTLE

Krispy Kreme
DOUGHNUTS

Aloha
MOLE CO.

MASON'S
FARMER
LOBSTER ROLL

Toastique

CHIPOTLE
MEXICAN GRILL

mobydick
HOUSE OF SANDS

USPAACC

BOSTON
UNIVERSITY



Ministerio de
Relaciones
Exteriores
Gobierno de Chile

PIIE
PETERSON INSTITUTE FOR
INTERNATIONAL ECONOMICS

Tabard
Bar

balos
estiatorio

COLADA
SHOP

nana
COFFEE, BAKERY, KITCHEN

Palm
RESTAURANT
EST. 2000

Surfside
CAVA

THE WORLD BANK

MAYFLOWER

IRON GATE



2000
MASSACHUSETTS
AVENUE NW

THE JAMES G. BLAINE MANSION

 Transwestern

Michael Goldman

Executive Vice President
(202) 706-6201
michael.goldman@transwestern.com

Kamis Lawrence

Senior Vice President
(202) 706-6202
kamis.lawrence@transwestern.com

Jake Fox

Senior Associate
(202) 627-1742
jake.fox@transwestern.com

